



2014-2018

AERONAUTICAL CLIMATOLOGICAL SUMMARIES

**LOKPRIYA GOPINATH
BORDOLOI
INTERNATIONAL
AIRPORT
GUWAHATI**

OFFICE OF CLIMATE RESEARCH & SERVICES
INDIA METEOROLOGICAL DEPARTMENT



PREFACE

The aviation industry in India has emerged as one of the fastest growing industries in the country during the last three years. India is currently considered the third largest domestic civil aviation market in the world. Same time meteorological information plays an essential role for all sectors of the Aviation industry - airlines, airports, air traffic control and management for taking correct and timely decisions that makes navigation safe, efficient and cost effective.

Aircrafts fly in the atmosphere where most of the weather systems develop and decay. Information of important meteorological parameters related to the safety of aircraft such as atmospheric Pressure, Temperature, Wind direction and speed, Visibility, Runway Visual Range (RVR) and Cloud Height are needed for smooth operations of an aircraft from take off to the landing phase. It is therefore very essential that climatology of an airport is available as a ready reckoner to understand mean number of occurrences (frequencies) of various weather elements in different temporal scales which affect aircraft operations round the clock. Aeronautical Climatological Summary of an Airport provides this vital information. Aeronautical Climatological Summaries for various National and International Airports are being prepared and updated at regular interval. The publication is prepared on the pattern of WMO Models A, B, C, D, E and Table VI in accordance with the procedures laid down in Technical Regulations as per International Civil Aviation Organization (ICAO) standards. The details of these models are given in Appendix-1. The present publication has been prepared for **Lokpriya Gopinath Bordoloi International Airport, Guwahati** (Latitude 26° 06'N, Longitude 91° 35'E and Altitude 54m) using the meteorological data for the period 2014-2018.

The successful publication of this report is achieved by valuable guidance and constant encouragement by Sh. K.N.Mohan, Sc-G, Head, RMC Guwahati, Sh. Sunit Das Sc-'E' and all the officials involved in this work at Climatological Unit, RMC Guwahati. The valuable contributions towards quality of work and keying in of huge volume of data were made by Sh R.N.Saha, Met-'A', Sh. Sumit Kumar,S.A, Ms. Anamika Sarma, S.A. along with other operational duty staff.

The entire work of this publication has been done by a group of officers and staff members led by Shri. Sudeep Kumar. B. L, Scientist C, under the guidance of Shri. A.D. Tathe, Scientist E & Head, Climate Data Management and Services (CDMS) Group. Valuable contributions were made by Smt. S.H. Joshi, Met. A, Shri Pradeep Rajmane, Met. A and Smt. Reshma Pathan, S.A. towards preparation of the summaries. I appreciate the help rendered by the entire team.

I am hopeful that this publication will serve as a source of useful information to aviation services.

K. S. Hosalikar
Head CRS

CONTENTS

Sn	Model name	Description	Pages
1	<u>MODEL - A</u>	Runway Visual Range or Visibility and/or the height of the base of lowest cloud layer	1 - 12
2	<u>MODEL - B</u>	Visibility	13 - 24
3	<u>MODEL - C</u>	Height of base of the lowest cloud	25 - 36
4	<u>MODEL - D</u>	Wind direction and wind speed	37 - 132
5	<u>MODEL - E</u>	Temperature	133 - 144
6	<u>TABLE - VI</u>	Atmospheric pressure	145 - 156
7	<u>DIAGRAMS</u>	Low cloud, Visibility, Total cloud, Temperature and Pressure	157 - 163

DESCRIPTION OF MODELS

Model type	Description
MODEL A	Monthly mean number of occurrences of runway visual range / visibility and/or the height of the base of lowest cloud layer (in metres), covering more than 4/8 th of the sky below specified values at the specified time.
MODEL B	Monthly mean number of visibility below specified values (in metres) at the specified time.
MODEL C	Monthly mean number of occurrences of the height of the base (in metres) of the lowest cloud layer covering more than 4/8th of the sky below specified values at the specified time.
MODEL D	Monthly mean number of occurrences of concurrent wind direction (30 degree sector) and wind speed (knots) within specified ranges.
MODEL E	Monthly mean number of occurrence of screen temperature (°C) in ranges of 5 degrees of the specified time.
TABLE VI	Monthly mean atmospheric pressure (hPa) at the reference level / mean sea level (for low level stations) at standard times for surface synoptic observations.

THE TERMS USED IN PUBLICATION WITH DESCRIPTION AND ITS UNITS.

S.N.	Terms	Description and Units
1	Time	Time of observation in Universal Time Coordinated (UTC).
2	HS	The height of base of lowest cloud layer covering more than 4/8 of the sky (metres).
3	Visibility	Horizontal visibility (metres).
4	RVR	Runway Visual Range (metres).
5	Wind Direction	Direction of wind from true north (degrees).
6	Wind speed	The speed of wind(knots).
7	Pressure	Mean sea level pressure (hPa).
8	Temperature	Screen temperatures (degree Celsius).

MONTH: JANUARY

MODEL : A

Table: Mean number of occurrences of Runway Visual Range or Visibility and/or the height of the base of lowest cloud layer covering more than 4/8 th of the sky (HS), below specified values and time.

Time UTC	Runway Visual Range OR Visibility / HS (metres)								
	VIS<100	<200	<400	<800	<1500	<1500	<3000	<8000	TOTAL
	HS		<30	<60	<90	<150	<300	<600	
0	0.8	0.6	0.6	2.2	4.4	7.2	15.0	0.4	31.2
1	0.4	1.2	1.4	4.8	8.0	6.0	9.8	0.4	32.0
2	0.4	1.6	1.0	1.2	5.6	5.0	14.8	2.0	31.6
3	0.2	0.6	0.4	0.8	3.2	2.4	19.6	3.0	30.2
4			0.2	0.8	3.0	1.4	19.4	6.6	31.4
5			0.2	0.4	1.6	1.4	18.0	10.6	32.2
6				0.2	1.0	0.6	16.2	13.8	31.8
7					0.2	0.4	11.8	18.0	30.4
8					0.2		9.6	21.2	31.0
9					0.2		8.0	22.2	30.4
10							7.8	23.0	30.8
11							8.4	22.0	30.4
12							12.4	17.8	30.2
13						0.2	15.6	14.8	30.6
14						0.2	18.2	12.4	30.8
15					0.4	0.2	19.8	9.8	30.2
16						0.4	21.2	8.4	30.0
17				0.2		1.0	22.4	6.4	30.0
18						1.8	23.4	5.0	30.2
19				0.8		1.4	26.0	2.8	31.0
20				0.8		2.6	25.8	1.8	31.0
21	2.0		0.2	1.0	0.4	3.2	24.8	0.8	32.4
22	0.2		0.2	0.6	1.0	3.0	24.4	0.2	29.6
23	0.4		0.6	1.0	1.8	6.0	20.4	0.2	30.4
TOTAL	4.4	4.0	4.8	14.8	31.0	44.4	412.8	223.6	739.8

MONTH: FEBRUARY

MODEL: A

Table: Mean number of occurrences of Runway Visual Range or Visibility and/or the height of the base of lowest cloud layer covering more than 4/8 th of the sky (HS), below specified values and time.

Time UTC	Runway Visual Range OR Visibility / HS (metres)								
	VIS<100	<200	<400	<800	<1500	<1500	<3000	<8000	TOTAL
	HS		<30	<60	<90	<150	<300	<600	
0				0.2	1.2	1.2	18.8	0.4	21.8
1			0.2	0.6	3.0	1.4	15.4	1.8	22.4
2			0.2	0.2	1.8	1.2	13.8	5.4	22.6
3			0.2		1.0	0.6	13.4	7.4	22.6
4					0.4		11.8	10.4	22.6
5					0.2	0.2	11.0	11.2	22.6
6							9.4	13.0	22.4
7							8.8	13.8	22.6
8				0.2	0.2	0.2	7.6	14.2	22.4
9					0.2	0.2	6.4	16.0	22.8
10					0.4	0.2	5.8	16.2	22.6
11					0.2	0.2	6.0	16.0	22.4
12					0.2	0.2	7.0	15.4	22.8
13						0.2	9.2	13.2	22.6
14					0.2	0.2	10.4	12.0	22.8
15						0.2	11.8	10.6	22.6
16					0.2		12.4	9.0	21.6
17						0.2	13.4	8.8	22.4
18						0.2	13.6	8.4	22.2
19						0.2	16.6	6.0	22.8
20					0.2	0.4	17.4	5.0	23.0
21					0.2	0.2	18.8	3.4	22.6
22					0.2	0.4	20.0	1.4	22.0
23					0.2	0.6	20.6	0.6	22.0
TOTAL			0.6	1.2	10.0	8.4	299.4	219.6	539.2

MONTH: MARCH

MODEL: A

Table: Mean number of occurrences of Runway Visual Range or Visibility and/or the height of the base of lowest cloud layer covering more than 4/8 th of the sky (HS), below specified values and time.

Time UTC	Runway Visual Range OR Visibility / HS (metres)								
	VIS<100	<200	<400	<800	<1500	<1500	<3000	<8000	TOTAL
	HS		<30	<60	<90	<150	<300	<600	
0				0.6	0.2	1.2	23.2	6.2	31.4
1					0.6	3.4	18.4	9.0	31.4
2			0.2		1.0	2.6	15.2	12.0	31.0
3				0.2		0.6	16.4	14.6	31.8
4						0.4	13.2	17.6	31.2
5						0.4	9.6	21.2	31.2
6						0.2	8.0	23.2	31.4
7						0.2	5.2	25.4	30.8
8						0.2	5.2	25.6	31.0
9						0.2	4.4	26.0	30.6
10						0.2	5.0	25.8	31.0
11					0.2		4.8	26.0	31.0
12							6.4	24.6	31.0
13							8.4	22.6	31.0
14							10.4	20.8	31.2
15							11.0	20.2	31.2
16							13.4	17.8	31.2
17					0.2		15.8	15.8	31.8
18						0.2	16.6	14.6	31.4
19						0.2	19.0	13.0	32.2
20						0.4	20.0	11.2	31.6
21						0.8	21.2	9.4	31.4
22						1.0	22.8	7.4	31.2
23				0.4		1.0	22.8	6.4	30.6
TOTAL			0.2	1.2	2.2	13.2	316.4	416.4	749.6

MONTH: APRIL

MODEL: A

Table: Mean number of occurrences of Runway Visual Range or Visibility and/or the height of the base of lowest cloud layer covering more than 4/8 th of the sky (HS), below specified values and time.

Time UTC	Runway Visual Range OR Visibility / HS (metres)								
	VIS<100	<200	<400	<800	<1500	<1500	<3000	<8000	TOTAL
HS		<30	<60	<90	<150	<300	<600		
0					0.4		19.8	13.6	33.8
1					0.4		15.0	17.0	32.4
2					0.2	0.2	12.2	19.0	31.6
3							7.4	24.4	31.8
4							4.6	26.4	31.0
5						0.2	3.4	26.8	30.4
6							2.8	28.0	30.8
7							2.2	28.0	30.2
8							2.4	28.4	30.8
9							2.2	28.2	30.4
10							1.8	28.4	30.2
11							1.6	27.6	29.2
12							2.0	28.6	30.6
13							3.8	27.2	31.0
14							6.0	24.4	30.4
15							7.0	23.2	30.2
16							9.4	21.6	31.0
17							12.6	19.6	32.2
18							13.4	18.8	32.2
19							15.0	16.8	31.8
20							16.0	16.2	32.2
21							18.2	14.8	33.0
22							21.0	11.2	32.2
23					0.2		21.8	10.4	32.4
TOTAL					1.2	0.4	221.6	528.6	751.8

MONTH: MAY

MODEL: A

Table: Mean number of occurrences of Runway Visual Range or Visibility and/or the height of the base of lowest cloud layer covering more than 4/8 th of the sky (HS), below specified values and time.

Time UTC	Runway Visual Range OR Visibility / HS (metres)								
	VIS<100	<200	<400	<800	<1500	<1500	<3000	<8000	TOTAL
	HS		<30	<60	<90	<150	<300	<600	
0						0.2	14.2	20.0	34.4
1					0.4		9.8	23.6	33.8
2							6.6	25.8	32.4
3					0.2	0.2	4.4	28.2	33.0
4							3.6	29.0	32.6
5							1.6	29.8	31.4
6						0.4	1.4	29.8	31.6
7						0.2	0.8	30.0	31.0
8							1.8	29.2	31.0
9							0.6	30.0	30.6
10							0.4	29.6	30.0
11							0.6	29.8	30.4
12							0.2	29.4	29.6
13							0.6	30.8	31.4
14							1.2	30.0	31.2
15							2.6	28.6	31.2
16							3.6	27.8	31.4
17							5.0	26.6	31.6
18							7.4	25.0	32.4
19							8.8	24.2	33.0
20							10.2	22.8	33.0
21							12.2	20.8	33.0
22							15.2	17.4	32.6
23						0.2	16.6	15.2	32.0
TOTAL					0.6	1.2	129.4	633.4	764.6

MONTH: JUNE

MODEL: A

Table: Mean number of occurrences of Runway Visual Range or Visibility and/or the height of the base of lowest cloud layer covering more than 4/8 th of the sky (HS), below specified values and time.

Time UTC	Runway Visual Range OR Visibility / HS (metres)								
	VIS<100	<200	<400	<800	<1500	<1500	<3000	<8000	TOTAL
HS		<30	<60	<90	<150	<300	<600		
0						0.2	7.0	25.6	32.8
1					0.2		5.6	28.0	33.8
2							4.4	27.8	32.2
3							2.8	28.0	30.8
4							2.0	29.0	31.0
5							1.6	29.2	30.8
6							1.4	28.6	30.0
7							0.6	29.2	29.8
8					0.2		0.8	29.2	30.2
9							0.8	29.4	30.2
10							0.8	29.6	30.4
11							0.8	28.6	29.4
12					0.2		0.8	29.4	30.4
13							1.0	29.0	30.0
14							1.8	28.6	30.4
15							1.8	28.2	30.0
16							2.0	28.4	30.4
17							2.2	27.6	29.8
18							2.8	26.8	29.6
19							3.6	26.4	30.0
20							5.6	24.4	30.0
21							7.8	23.0	30.8
22							10.0	20.6	30.6
23						0.2	10.8	21.2	32.2
TOTAL					0.6	0.4	78.8	655.8	735.6

MONTH: JULY

MODEL: A

Table: Mean number of occurrences of Runway Visual Range or Visibility and/or the height of the base of lowest cloud layer covering more than 4/8 th of the sky (HS), below specified values and time.

Time UTC	Runway Visual Range OR Visibility / HS (metres)								
	VIS<100	<200	<400	<800	<1500	<1500	<3000	<8000	TOTAL
	HS		<30	<60	<90	<150	<300	<600	
0							4.8	28.4	33.2
1					0.2	0.2	3.0	29.6	33.0
2						0.4	2.2	29.2	31.8
3					0.2		2.0	29.6	31.8
4						0.2	1.4	29.4	31.0
5							0.4	29.8	30.2
6							0.2	29.8	30.0
7							0.2	30.0	30.2
8							0.2	29.4	29.6
9							0.8	29.4	30.2
10						0.2	0.2	29.8	30.2
11							0.4	29.2	29.6
12							0.6	28.4	29.0
13							0.6	30.0	30.6
14							0.8	30.0	30.8
15							1.2	29.8	31.0
16							1.4	29.4	30.8
17							1.8	29.0	30.8
18							2.8	28.2	31.0
19							3.4	28.4	31.8
20							3.8	27.8	31.6
21							4.8	27.0	31.8
22							5.8	26.2	32.0
23							6.2	27.2	33.4
TOTAL					0.4	1.0	49.0	695.0	745.4

MONTH: AUGUST

MODEL: A

Table: Mean number of occurrences of Runway Visual Range or Visibility and/or the height of the base of lowest cloud layer covering more than 4/8 th of the sky (HS), below specified values and time.

Time UTC	Runway Visual Range OR Visibility / HS (metres)								
	VIS<100	<200	<400	<800	<1500	<1500	<3000	<8000	TOTAL
	HS		<30	<60	<90	<150	<300	<600	
0							3.4	29.2	32.6
1							3.0	30.0	33.0
2							2.0	30.2	32.2
3							2.0	30.2	32.2
4							1.6	30.2	31.8
5							1.0	29.8	30.8
6							0.4	30.0	30.4
7							0.8	29.2	30.0
8						0.2	0.8	30.2	31.2
9							0.2	30.2	30.4
10								29.8	29.8
11							0.2	30.0	30.2
12								30.6	30.6
13							0.2	30.2	30.4
14							0.4	30.0	30.4
15							0.4	29.6	30.0
16							0.8	29.8	30.6
17							1.0	29.8	30.8
18							1.4	29.2	30.6
19							2.2	28.4	30.6
20							3.0	28.0	31.0
21							3.8	28.0	31.8
22							4.6	27.6	32.2
23							4.2	28.2	32.4
TOTAL						0.2	37.4	708.4	746.0

MONTH: SEPTEMBER

MODEL: A

Table: Mean number of occurrences of Runway Visual Range or Visibility and/or the height of the base of lowest cloud layer covering more than 4/8 th of the sky (HS), below specified values and time.

Time UTC	Runway Visual Range OR Visibility / HS (metres)								
	VIS<100	<200	<400	<800	<1500	<1500	<3000	<8000	TOTAL
	HS		<30	<60	<90	<150	<300	<600	
0						0.2	5.6	25.2	31.0
1							5.6	26.8	32.4
2							3.4	27.8	31.2
3							1.4	29.0	30.4
4							1.4	29.2	30.6
5							1.0	29.6	30.6
6							0.8	29.2	30.0
7							1.0	28.8	29.8
8							1.4	29.6	31.0
9							0.8	29.8	30.6
10							1.4	29.4	30.8
11							0.4	29.8	30.2
12							0.4	29.4	29.8
13							0.6	29.6	30.2
14							0.6	29.0	29.6
15							0.6	29.6	30.2
16							1.4	29.4	30.8
17							1.6	29.2	30.8
18							1.8	28.8	30.6
19							3.0	28.0	31.0
20							3.4	26.8	30.2
21							4.4	26.0	30.4
22							4.4	26.0	30.4
23							5.8	25.0	30.8
TOTAL						0.2	52.2	681.0	733.4

MONTH: OCTOBER

MODEL: A

Table: Mean number of occurrences of Runway Visual Range or Visibility and/or the height of the base of lowest cloud layer covering more than 4/8 th of the sky (HS), below specified values and time.

Time UTC	Runway Visual Range OR Visibility / HS (metres)								
	VIS<100	<200	<400	<800	<1500	<1500	<3000	<8000	TOTAL
	HS		<30	<60	<90	<150	<300	<600	
0			0.2				14.2	18.8	33.2
1				0.2	0.4	0.8	9.6	22.0	33.0
2					0.4	0.6	7.0	24.4	32.4
3							5.0	26.6	31.6
4							2.2	28.8	31.0
5							0.8	29.4	30.2
6							0.2	30.4	30.6
7							0.4	30.4	30.8
8							0.2	30.2	30.4
9							0.4	30.6	31.0
10						0.2	0.4	30.4	31.0
11						0.2	0.4	30.4	31.0
12							0.6	30.4	31.0
13							1.2	29.8	31.0
14							1.4	30.2	31.6
15							1.8	29.8	31.6
16							2.2	29.4	31.6
17							2.6	28.8	31.4
18							3.6	27.8	31.4
19							4.2	27.2	31.4
20							5.0	26.4	31.4
21							6.6	24.8	31.4
22							10.6	20.6	31.2
23							12.4	19.2	31.6
TOTAL			0.2	0.2	0.8	1.8	93.0	656.8	752.8

MONTH: NOVEMBER

MODEL: A

Table: Mean number of occurrences of Runway Visual Range or Visibility and/or the height of the base of lowest cloud layer covering more than 4/8 th of the sky (HS), below specified values and time.

Time UTC	Runway Visual Range OR Visibility / HS (metres)								
	VIS<100	<200	<400	<800	<1500	<1500	<3000	<8000	TOTAL
	HS		<30	<60	<90	<150	<300	<600	
0			0.4	0.6	1.8	2.6	20.6	3.6	29.6
1			0.4	1.2	3.2	2.8	16.6	6.2	30.4
2			0.2	0.4	1.2	1.2	15.4	11.8	30.2
3					0.6	0.8	10.0	20.0	31.4
4					0.2	0.4	6.0	23.2	29.8
5							4.6	25.8	30.4
6							2.6	27.4	30.0
7							2.2	27.6	29.8
8							1.6	28.2	29.8
9							1.0	28.2	29.2
10							1.0	28.2	29.2
11							1.2	28.4	29.6
12							3.0	27.0	30.0
13							4.2	25.4	29.6
14							4.6	24.4	29.0
15						0.2	6.2	22.6	29.0
16							9.4	20.0	29.4
17							11.0	18.2	29.2
18							13.0	16.8	29.8
19							14.8	14.8	29.6
20							17.2	12.2	29.4
21							21.0	8.2	29.2
22						0.6	21.8	6.0	28.4
23			0.4	0.4	0.4	0.8	22.6	5.0	29.6
TOTAL			1.4	2.6	7.4	9.4	231.6	459.2	711.6

MONTH: DECEMBER

MODEL: A

Table: Mean number of occurrences of Runway Visual Range or Visibility and/or the height of the base of lowest cloud layer covering more than 4/8 th of the sky (HS), below specified values and time.

Time UTC	Runway Visual Range OR Visibility / HS (metres)								
	VIS<100	<200	<400	<800	<1500	<1500	<3000	<8000	TOTAL
	HS		<30	<60	<90	<150	<300	<600	
0	0.4	1.0	1.6	2.2	1.8	6.6	16.4	1.0	31.0
1	0.6	2.2	2.0	2.6	6.6	5.4	12.2	1.6	33.2
2	0.2	1.0	0.6	1.6	4.2	1.8	17.2	4.0	30.6
3			0.6	1.6	3.2	1.0	15.4	10.2	32.0
4				0.4	2.8	0.6	12.8	14.8	31.4
5					1.6	0.6	9.4	19.6	31.2
6					0.6	0.2	6.6	23.2	30.6
7					0.4		5.2	24.8	30.4
8					0.4		4.0	26.0	30.4
9					0.4		3.6	27.0	31.0
10					0.2		3.4	27.4	31.0
11						0.2	4.4	25.8	30.4
12						0.2	5.2	25.4	30.8
13						0.2	7.8	23.0	31.0
14						0.2	10.8	19.8	30.8
15						0.4	13.8	16.6	30.8
16						0.6	16.2	14.2	31.0
17				0.2		0.2	19.4	11.2	31.0
18	11.4					0.4	22.4	8.0	42.2
19	8.2					1.0	24.0	5.4	38.6
20	5.6			0.2		1.0	26.6	3.0	36.4
21	3.2			0.6	0.8	2.0	25.6	1.8	34.0
22	0.2	0.4	0.2	0.6	1.2	3.0	24.8	0.8	31.2
23	0.4	1.0	0.8	1.2	1.4	3.6	21.4	0.4	30.2
TOTAL	30.2	5.6	5.8	11.2	25.6	29.2	328.6	335.0	771.2

MONTH : JANUARY

MODEL : B

TABLE: Mean number of occurrences of visibility below specified values and time.

Time UTC	VISIBILITY (metres)								
	<200	<400	<600	<800	<1500	<3000	<5000	<8000	TOTAL
0	1.4	0.2	1.6	0.6	11.6	15.0			30.4
1	1.6	1.0	3.8	1.0	13.0	9.8			30.2
2	2.0	1.2	0.6	0.6	9.8	14.8	1.6		30.6
3	0.8	1.2	0.4	0.4	4.8	19.6	2.6		29.8
4		0.4	0.2	0.6	3.8	19.4	6.0		30.4
5		0.2	0.4		2.4	18.0	9.6	0.2	30.8
6				0.2	1.0	16.2	12.4	0.6	30.4
7					0.4	11.8	17.0	1.0	30.2
8						9.6	18.4	2.8	30.8
9						8.0	18.0	4.2	30.2
10						7.8	17.4	5.6	30.8
11						8.4	17.0	4.8	30.2
12						12.4	15.2	2.4	30.0
13					0.2	15.6	14.2	0.4	30.4
14					0.2	18.2	12.4		30.8
15					0.6	19.8	9.8		30.2
16					0.4	21.2	8.4		30.0
17			0.2		1.0	22.4	6.4		30.0
18					1.8	23.4	4.8		30.0
19			0.4	0.4	1.4	26.0	2.6		30.8
20			0.8		2.6	25.8	1.4		30.6
21		0.2	1.0		3.6	24.8	0.4		30.0
22	0.2	1.0	0.6		3.8	24.4			30.0
23	0.4	1.0	1.0		7.4	20.4			30.2
TOTAL	6.4	6.4	11.0	3.8	69.8	412.8	195.6	22.0	727.8

MONTH : FEBRUARY

MODEL : B

TABLE: Mean number of occurrences of visibility below specified values and time.

Time UTC	VISIBILITY (metres)								
	<200	<400	<600	<800	<1500	<3000	<5000	<8000	TOTAL
0			0.2		2.4	18.8	0.2		21.6
1		0.2	0.4	0.2	4.4	15.4	1.6		22.2
2		0.2	0.2		3.0	13.8	4.8		22.0
3		0.2			1.6	13.4	5.6	1.2	22.0
4					0.4	11.8	8.4	1.8	22.4
5					0.4	11.0	8.6	2.4	22.4
6						9.4	9.8	3.0	22.2
7						8.8	10.0	3.6	22.4
8				0.2	0.2	7.6	9.8	4.2	22.0
9					0.2	6.4	10.2	5.6	22.4
10					0.4	5.8	10.2	6.0	22.4
11					0.4	6.0	9.8	6.0	22.2
12					0.4	7.0	12.0	3.0	22.4
13					0.2	9.2	12.0	0.8	22.2
14					0.4	10.4	11.4		22.2
15					0.2	11.8	10.4		22.4
16					0.2	12.4	8.8		21.4
17					0.2	13.4	8.4		22.0
18					0.2	13.6	7.8		21.6
19					0.2	16.6	5.4		22.2
20					0.6	17.4	4.2		22.2
21					0.4	18.8	3.0		22.2
22					0.6	20.0	1.2		21.8
23					0.8	20.6	0.6		22.0
TOTAL		0.6	0.8	0.4	17.8	299.4	174.2	37.6	530.8

MONTH : MARCH

MODEL : B

TABLE: Mean number of occurrences of visibility below specified values and time.

Time UTC	VISIBILITY (metres)								
	<200	<400	<600	<800	<1500	<3000	<5000	<8000	TOTAL
0			0.2	0.4	1.4	23.2	5.2		30.4
1					4.0	18.4	7.4	0.6	30.4
2		0.2			3.6	15.2	10.6	0.8	30.4
3				0.2	0.6	16.4	12.0	1.6	30.8
4					0.4	13.2	15.2	2.0	30.8
5					0.4	9.6	16.2	4.6	30.8
6					0.2	8.0	17.0	5.8	31.0
7					0.2	5.2	17.0	7.8	30.2
8					0.2	5.2	16.8	8.4	30.6
9					0.2	4.4	15.4	10.4	30.4
10					0.2	5.0	13.6	11.8	30.6
11					0.2	4.8	14.6	11.2	30.8
12						6.4	15.8	8.6	30.8
13						8.4	20.6	1.6	30.6
14						10.4	20.4		30.8
15						11.0	19.8		30.8
16						13.4	17.2		30.6
17					0.2	15.8	14.6		30.6
18					0.2	16.6	13.6		30.4
19					0.2	19.0	11.6		30.8
20					0.4	20.0	9.8		30.2
21					0.8	21.2	8.6		30.6
22					1.0	22.8	6.6		30.4
23			0.2	0.2	1.0	22.8	6.0		30.2
TOTAL		0.2	0.4	0.8	15.4	316.4	325.6	75.2	734.0

MONTH : APRIL

MODEL : B

TABLE: Mean number of occurrences of visibility below specified values and time.

Time UTC	VISIBILITY (metres)								
	<200	<400	<600	<800	<1500	<3000	<5000	<8000	TOTAL
0					0.4	19.8	9.0		29.2
1					0.4	15.0	12.0	1.6	29.0
2					0.4	12.2	13.4	3.2	29.2
3						7.4	17.4	4.0	28.8
4						4.6	16.8	7.6	29.0
5					0.2	3.4	14.0	11.2	28.8
6						2.8	11.8	14.6	29.2
7						2.2	11.0	15.8	29.0
8						2.4	8.8	18.4	29.6
9						2.2	6.6	20.4	29.2
10						1.8	6.8	20.6	29.2
11						1.6	7.2	19.6	28.4
12						2.0	8.6	18.8	29.4
13						3.8	18.0	7.4	29.2
14						6.0	21.4	1.0	28.4
15						7.0	21.6	0.2	28.8
16						9.4	19.4		28.8
17						12.6	16.8		29.4
18						13.4	15.6		29.0
19						15.0	13.6		28.6
20						16.0	12.6		28.6
21						18.2	10.8		29.0
22						21.0	7.4		28.4
23					0.2	21.8	7.0		29.0
TOTAL					1.6	221.6	307.6	164.4	695.2

MONTH : MAY

MODEL : B

TABLE: Mean number of occurrences of visibility below specified values and time.

Time UTC	VISIBILITY (metres)								
	<200	<400	<600	<800	<1500	<3000	<5000	<8000	TOTAL
0					0.2	14.2	15.6	0.6	30.6
1					0.4	9.8	17.8	2.4	30.4
2						6.6	17.2	6.2	30.0
3					0.4	4.4	15.2	10.8	30.8
4						3.6	13.2	13.8	30.6
5						1.6	12.6	16.0	30.2
6					0.4	1.4	9.6	19.0	30.4
7					0.2	0.8	7.8	21.2	30.0
8						1.8	6.6	21.0	29.4
9						0.6	6.2	23.4	30.2
10						0.4	5.2	24.2	29.8
11						0.6	4.6	24.8	30.0
12						0.2	5.8	23.6	29.6
13						0.6	14.2	16.0	30.8
14						1.2	26.6	2.6	30.4
15						2.6	27.8		30.4
16						3.6	26.6		30.2
17						5.0	25.2		30.2
18						7.4	23.0		30.4
19						8.8	22.0		30.8
20						10.2	19.8		30.0
21						12.2	18.4		30.6
22						15.2	15.0		30.2
23					0.2	16.6	13.4		30.2
TOTAL					1.8	129.4	369.4	225.6	726.2

MONTH : JUNE

MODEL : B

TABLE: Mean number of occurrences of visibility below specified values and time.

Time UTC	VISIBILITY (metres)								
	<200	<400	<600	<800	<1500	<3000	<5000	<8000	TOTAL
0					0.2	7.0	20.6	1.2	29.0
1					0.2	5.6	20.4	3.2	29.4
2						4.4	18.0	6.4	28.8
3						2.8	15.8	10.6	29.2
4						2.0	13.6	13.6	29.2
5						1.6	9.4	18.2	29.2
6						1.4	6.0	21.4	28.8
7						0.6	5.8	22.8	29.2
8						0.8	4.8	23.8	29.4
9						0.8	5.6	23.0	29.4
10						0.8	6.0	22.8	29.6
11						0.8	6.8	21.2	28.8
12					0.2	0.8	6.6	22.0	29.6
13						1.0	10.8	17.4	29.2
14						1.8	22.6	4.8	29.2
15						1.8	25.2	1.8	28.8
16						2.0	26.8	0.6	29.4
17						2.2	26.4	0.4	29.0
18						2.8	25.2	0.2	28.2
19						3.6	24.8	0.2	28.6
20						5.6	23.0		28.6
21						7.8	20.8		28.6
22						10.0	17.8		27.8
23					0.2	10.8	17.6	0.2	28.8
TOTAL					0.8	78.8	380.4	235.8	695.8

MONTH : JULY

MODEL : B

TABLE: Mean number of occurrences of visibility below specified values and time.

Time UTC	VISIBILITY (metres)								
	<200	<400	<600	<800	<1500	<3000	<5000	<8000	TOTAL
0						4.8	23.0	2.4	30.2
1					0.4	3.0	19.4	7.6	30.4
2					0.4	2.2	15.8	11.0	29.4
3					0.2	2.0	11.8	16.0	30.0
4					0.2	1.4	10.2	18.2	30.0
5						0.4	8.8	20.6	29.8
6						0.2	7.4	22.2	29.8
7						0.2	5.2	24.6	30.0
8						0.2	5.6	23.6	29.4
9						0.8	6.0	22.8	29.6
10					0.2	0.2	5.8	23.8	30.0
11						0.4	5.8	23.4	29.6
12						0.6	7.2	20.8	28.6
13						0.6	10.8	18.8	30.2
14						0.8	21.8	7.6	30.2
15						1.2	27.2	2.0	30.4
16						1.4	28.0	0.8	30.2
17						1.8	27.8	0.6	30.2
18						2.8	27.2	0.4	30.4
19						3.4	26.6	0.4	30.4
20						3.8	26.0	0.4	30.2
21						4.8	24.6	0.2	29.6
22						5.8	23.6	0.2	29.6
23						6.2	24.2	0.2	30.6
TOTAL					1.4	49.0	399.8	268.6	718.8

MONTH : AUGUST

MODEL : B

TABLE: Mean number of occurrences of visibility below specified values and time.

Time UTC	VISIBILITY (metres)								
	<200	<400	<600	<800	<1500	<3000	<5000	<8000	TOTAL
0						3.4	26.4	0.6	30.4
1						3.0	21.2	6.4	30.6
2						2.0	16.2	12.2	30.4
3						2.0	12.6	15.8	30.4
4						1.6	8.6	20.0	30.2
5						1.0	7.0	21.8	29.8
6						0.4	4.2	25.4	30.0
7						0.8	3.8	24.6	29.2
8					0.2	0.8	3.8	25.6	30.4
9						0.2	3.4	26.6	30.2
10							2.4	27.4	29.8
11						0.2	4.4	25.4	30.0
12							6.0	24.6	30.6
13						0.2	13.6	16.4	30.2
14						0.4	22.8	7.0	30.2
15						0.4	26.0	3.2	29.6
16						0.8	27.4	1.6	29.8
17						1.0	28.2	0.8	30.0
18						1.4	28.0	0.2	29.6
19						2.2	27.2	0.2	29.6
20						3.0	26.4	0.2	29.6
21						3.8	25.8	0.2	29.8
22						4.6	25.6		30.2
23						4.2	25.8		30.0
TOTAL					0.2	37.4	396.8	286.2	720.6

MONTH : SEPTEMBER

MODEL : B

TABLE: Mean number of occurrences of visibility below specified values and time.

Time UTC	VISIBILITY (metres)								
	<200	<400	<600	<800	<1500	<3000	<5000	<8000	TOTAL
0	0.2				0.2	5.6	22.6	0.4	29.0
1						5.6	19.2	4.4	29.2
2						3.4	16.4	9.0	28.8
3						1.4	14.4	13.6	29.4
4						1.4	12.6	15.6	29.6
5						1.0	9.4	19.2	29.6
6						0.8	8.0	20.4	29.2
7						1.0	7.0	20.8	28.8
8						1.4	6.6	21.8	29.8
9						0.8	6.2	22.8	29.8
10						1.4	7.2	21.0	29.6
11						0.4	9.0	20.6	30.0
12						0.4	11.4	17.8	29.6
13						0.6	20.0	9.2	29.8
14						0.6	26.8	2.0	29.4
15						0.6	28.6	0.6	29.8
16						1.4	28.4	0.2	30.0
17						1.6	28.2		29.8
18						1.8	27.8		29.6
19						3.0	26.8		29.8
20						3.4	25.8		29.2
21						4.4	25.0		29.4
22						4.4	24.8		29.2
23						5.8	23.8		29.6
TOTAL	0.2				0.2	52.2	436.0	219.4	708.0

MONTH : OCTOBER

MODEL : B

TABLE: Mean number of occurrences of visibility below specified values and time.

Time UTC	VISIBILITY (metres)								
	<200	<400	<600	<800	<1500	<3000	<5000	<8000	TOTAL
0		0.2				14.2	15.8		30.2
1				0.2	1.2	9.6	18.4	1.4	30.8
2					0.8	7.0	17.0	5.6	30.4
3						5.0	16.6	8.6	30.2
4						2.2	15.4	12.8	30.4
5						0.8	12.8	16.6	30.2
6						0.2	11.4	19.0	30.6
7						0.4	9.4	21.0	30.8
8						0.2	10.0	20.2	30.4
9						0.4	8.8	21.4	30.6
10					0.2	0.4	9.0	20.8	30.4
11					0.2	0.4	10.0	20.0	30.6
12						0.6	16.0	13.8	30.4
13						1.2	23.8	5.2	30.2
14						1.4	28.2	1.2	30.8
15						1.8	28.8	0.2	30.8
16						2.2	28.6		30.8
17						2.6	28.0		30.6
18						3.6	26.8		30.4
19						4.2	26.2		30.4
20						5.0	25.4		30.4
21						6.6	24.0		30.6
22						10.6	19.6		30.2
23						12.4	18.2		30.6
TOTAL		0.2		0.2	2.4	93.0	448.2	187.8	731.8

MONTH : NOVEMBER

MODEL : B

TABLE: Mean number of occurrences of visibility below specified values and time.

Time UTC	VISIBILITY (metres)								
	<200	<400	<600	<800	<1500	<3000	<5000	<8000	TOTAL
0		0.4	0.4	0.2	4.4	20.6	2.6		28.6
1		0.2	1.2		6.0	16.6	5.2		29.2
2		0.2	0.4		2.4	15.4	10.6	0.4	29.4
3					1.4	10.0	16.6	1.8	29.8
4					0.6	6.0	17.6	5.2	29.4
5						4.6	17.2	8.0	29.8
6						2.6	16.2	11.2	30.0
7						2.2	13.8	13.8	29.8
8						1.6	12.2	16.0	29.8
9						1.0	12.0	16.2	29.2
10						1.0	11.4	16.8	29.2
11						1.2	13.0	15.4	29.6
12						3.0	22.4	4.6	30.0
13						4.2	24.8	0.4	29.4
14						4.6	24.2		28.8
15					0.2	6.2	22.2		28.6
16						9.4	19.4		28.8
17						11.0	17.6		28.6
18						13.0	16.4		29.4
19						14.8	14.4		29.2
20						17.2	11.8		29.0
21						21.0	8.0		29.0
22					0.6	21.8	6.0		28.4
23		0.4	0.2	0.2	1.2	22.6	4.4		29.0
TOTAL		1.2	2.2	0.4	16.8	231.6	340.0	109.8	702.0

MONTH : DECEMBER

MODEL : B

TABLE: Mean number of occurrences of visibility below specified values and time.

Time UTC	VISIBILITY (metres)								
	<200	<400	<600	<800	<1500	<3000	<5000	<8000	TOTAL
0	1.4	2.2	1.6	0.6	8.4	16.4			30.6
1	2.8	1.0	1.8	0.8	11.6	12.2	0.4		30.6
2	1.2	1.0	1.2	0.4	5.6	17.2	3.2		29.8
3		0.6	1.0	0.6	3.4	15.4	9.6		30.6
4			0.2	0.2	3.2	12.8	13.6	0.2	30.2
5					2.0	9.4	18.2	0.6	30.2
6					0.6	6.6	21.6	1.2	30.0
7					0.4	5.2	21.2	3.4	30.2
8					0.4	4.0	19.4	6.4	30.2
9					0.4	3.6	18.4	8.4	30.8
10					0.2	3.4	18.0	9.2	30.8
11					0.2	4.4	19.0	6.6	30.2
12					0.2	5.2	24.4	0.6	30.4
13					0.2	7.8	22.8		30.8
14					0.2	10.8	19.6		30.6
15					0.4	13.8	16.4		30.6
16					0.6	16.2	13.8		30.6
17			0.2		0.2	19.4	11.0		30.8
18	0.2				0.4	22.4	7.8		30.8
19	0.2				1.0	24.0	5.2		30.4
20	0.2		0.2		1.0	26.6	2.8		30.8
21	0.2		0.6		2.8	25.6	1.6		30.8
22	0.6	0.2	0.6		4.0	24.8	0.6		30.8
23	1.4	0.8	1.2		5.0	21.4			29.8
TOTAL	8.2	5.8	8.6	2.6	52.4	328.6	288.6	36.6	731.4

MONTH : JANUARY

MODEL : C

TABLE: Mean number of occurrences of the height of the base of the lowest cloud layer (metres) covering more than 4/8 of the sky below specified values and time.

Time (UTC)	Height of the base of the lowest cloud layer (metres)						
	<30	<60	<90	<150	<300	<450	TOTAL
0							
1							
2							
3							
4							
5							
6							
7							
8							
9							
10							
11							
12							
13							
14							
15							
16							
17							
18							
19							
20							
21							
22							
23							
TOTAL							

MONTH : FEBRUARY

MODEL : C

TABLE: Mean number of occurrences of the height of the base of the lowest cloud layer (metres) covering more than 4/8 of the sky below specified values and time.

Time (UTC)	Height of the base of the lowest cloud layer (metres)						
	<30	<60	<90	<150	<300	<450	TOTAL
0							
1							
2							
3							
4							
5							
6							
7							
8							
9							
10							
11							
12							
13							
14							
15							
16							
17							
18							
19							
20							
21							
22							
23							
TOTAL							

MONTH : MARCH

MODEL : C

TABLE: Mean number of occurrences of the height of the base of the lowest cloud layer (metres) covering more than 4/8 of the sky below specified values and time.

Time (UTC)	Height of the base of the lowest cloud layer (metres)						
	<30	<60	<90	<150	<300	<450	TOTAL
0							
1							
2							
3							
4							
5							
6							
7							
8							
9							
10							
11							
12							
13							
14							
15							
16							
17							
18							
19							
20							
21							
22							
23							
TOTAL							

MONTH : APRIL

MODEL : C

TABLE: Mean number of occurrences of the height of the base of the lowest cloud layer (metres) covering more than 4/8 of the sky below specified values and time.

Time (UTC)	Height of the base of the lowest cloud layer (metres)						
	<30	<60	<90	<150	<300	<450	TOTAL
0							
1							
2							
3							
4							
5							
6							
7							
8							
9							
10							
11							
12							
13							
14							
15							
16							
17							
18							
19							
20							
21							
22							
23							
TOTAL							

MONTH : MAY

MODEL : C

TABLE: Mean number of occurrences of the height of the base of the lowest cloud layer (metres) covering more than 4/8 of the sky below specified values and time.

Time (UTC)	Height of the base of the lowest cloud layer (metres)						
	<30	<60	<90	<150	<300	<450	TOTAL
0							
1							
2							
3						0.2	0.2
4							
5							
6							
7							
8							
9							
10							
11							
12							
13							
14							
15							
16							
17							
18							
19							
20							
21							
22							
23							
TOTAL						0.2	0.2

MONTH : JUNE

MODEL : C

TABLE: Mean number of occurrences of the height of the base of the lowest cloud layer (metres) covering more than 4/8 of the sky below specified values and time.

Time (UTC)	Height of the base of the lowest cloud layer (metres)						
	<30	<60	<90	<150	<300	<450	TOTAL
0							
1							
2							
3							
4							
5							
6							
7							
8							
9							
10							
11						0.2	0.2
12							
13							
14							
15							
16							
17							
18							
19							
20							
21							
22							
23							
TOTAL						0.2	0.2

MONTH : JULY

MODEL : C

TABLE: Mean number of occurrences of the height of the base of the lowest cloud layer (metres) covering more than 4/8 of the sky below specified values and time.

Time (UTC)	Height of the base of the lowest cloud layer (metres)						
	<30	<60	<90	<150	<300	<450	TOTAL
0							
1							
2							
3							
4							
5							
6							
7							
8							
9							
10							
11							
12							
13							
14							
15							
16							
17							
18							
19							
20							
21							
22							
23							
TOTAL							

MONTH : AUGUST

MODEL : C

TABLE: Mean number of occurrences of the height of the base of the lowest cloud layer (metres) covering more than 4/8 of the sky below specified values and time.

Time (UTC)	Height of the base of the lowest cloud layer (metres)						
	<30	<60	<90	<150	<300	<450	TOTAL
0						0.2	0.2
1						0.2	0.2
2						0.2	0.2
3							
4							
5							
6							
7							
8							
9							
10							
11							
12							
13							
14							
15							
16							
17							
18							
19							
20							
21							
22							
23							
TOTAL						0.6	0.6

MONTH : SEPTEMBER

MODEL : C

TABLE: Mean number of occurrences of the height of the base of the lowest cloud layer (metres) covering more than 4/8 of the sky below specified values and time.

Time (UTC)	Height of the base of the lowest cloud layer (metres)						
	<30	<60	<90	<150	<300	<450	TOTAL
0							
1							
2							
3							
4							
5							
6							
7							
8							
9							
10							
11							
12							
13							
14							
15							
16							
17							
18							
19							
20							
21							
22							
23							
TOTAL							

MONTH : OCTOBER

MODEL : C

TABLE: Mean number of occurrences of the height of the base of the lowest cloud layer (metres) covering more than 4/8 of the sky below specified values and time.

Time (UTC)	Height of the base of the lowest cloud layer (metres)						
	<30	<60	<90	<150	<300	<450	TOTAL
0							
1							
2							
3							
4							
5							
6							
7							
8							
9							
10							
11							
12							
13							
14							
15							
16							
17							
18							
19							
20							
21							
22							
23							
TOTAL							

MONTH : NOVEMBER

MODEL : C

TABLE: Mean number of occurrences of the height of the base of the lowest cloud layer (metres) covering more than 4/8 of the sky below specified values and time.

Time (UTC)	Height of the base of the lowest cloud layer (metres)						
	<30	<60	<90	<150	<300	<450	TOTAL
0							
1							
2							
3							
4							
5							
6							
7							
8							
9							
10							
11							
12							
13							
14							
15							
16							
17							
18							
19							
20							
21							
22							
23							
TOTAL							

MONTH : DECEMBER

MODEL : C

TABLE: Mean number of occurrences of the height of the base of the lowest cloud layer (metres) covering more than 4/8 of the sky below specified values and time.

Time (UTC)	Height of the base of the lowest cloud layer (metres)						
	<30	<60	<90	<150	<300	<450	TOTAL
0							
1							
2							
3							
4							
5						0.2	0.2
6							
7							
8							
9							
10							
11							
12							
13							
14							
15							
16							
17							
18							
19							
20							
21							
22							
23							
TOTAL						0.2	0.2

MONTH : JANUARY

TIME : 0 UTC

MODEL : D

TABLE: Mean number of occurrences of concurrent wind direction (in 30 degree sector) and wind speed in specified ranges.

Wind Direction in tens of degree	WIND SPEED (KNOTS)												
	0	1 TO 5	6 TO 10	11 TO 15	16 TO 20	21 TO 25	26 TO 30	31 TO 35	36 TO 40	41 TO 45	46 TO 50	> 50	TOTAL
Calm	25.8												25.8
Variable													
35-36-01		0.2											0.2
02-03-04													
05-06-07		0.4											0.4
08-09-10		0.2											0.2
11-12-13													
14-15-16		0.2											0.2
17-18-19		1.6	0.2										1.8
20-21-22		0.8											0.8
23-24-25		0.4											0.4
26-27-28		0.6											0.6
29-30-31													
32-33-34													
TOTAL	25.8	4.4	0.2										30.4

MONTH : JANUARY

TIME : 3 UTC

MODEL : D

TABLE: Mean number of occurrences of concurrent wind direction (in 30 degree sector) and wind speed in specified ranges.

Wind Direction in tens of degree	WIND SPEED (KNOTS)												
	0	1 TO 5	6 TO 10	11 TO 15	16 TO 20	21 TO 25	26 TO 30	31 TO 35	36 TO 40	41 TO 45	46 TO 50	> 50	TOTAL
Calm	23.6												23.6
Variable													
35-36-01		0.8											0.8
02-03-04		0.8											0.8
05-06-07		0.2	0.2										0.4
08-09-10		0.2											0.2
11-12-13													
14-15-16													
17-18-19		1.8											1.8
20-21-22		0.6	0.2										0.8
23-24-25		0.4											0.4
26-27-28		0.4											0.4
29-30-31		0.2											0.2
32-33-34		0.6											0.6
TOTAL	23.6	6.0	0.4										30.0

MONTH : JANUARY

TIME : 6 UTC

MODEL : D

TABLE: Mean number of occurrences of concurrent wind direction (in 30 degree sector) and wind speed in specified ranges.

Wind Direction in tens of degree	WIND SPEED (KNOTS)												
	0	1 TO 5	6 TO 10	11 TO 15	16 TO 20	21 TO 25	26 TO 30	31 TO 35	36 TO 40	41 TO 45	46 TO 50	> 50	TOTAL
Calm	4.2												4.2
Variable													
35-36-01		4.0	3.2										7.2
02-03-04		3.4	2.6										6.0
05-06-07		1.2	0.8										2.0
08-09-10		0.8											0.8
11-12-13		0.2											0.2
14-15-16													
17-18-19		0.2											0.2
20-21-22		0.4											0.4
23-24-25		0.8	0.2										1.0
26-27-28		1.4	0.6										2.0
29-30-31		3.4	0.4										3.8
32-33-34		1.8	0.8										2.6
TOTAL	4.2	17.6	8.6										30.4

MONTH : JANUARY

TIME : 9 UTC

MODEL : D

TABLE: Mean number of occurrences of concurrent wind direction (in 30 degree sector) and wind speed in specified ranges.

Wind Direction in tens of degree	WIND SPEED (KNOTS)												
	0	1 TO 5	6 TO 10	11 TO 15	16 TO 20	21 TO 25	26 TO 30	31 TO 35	36 TO 40	41 TO 45	46 TO 50	> 50	TOTAL
Calm	2.8												2.8
Variable													
35-36-01		1.4	2.0										3.4
02-03-04		3.6	4.8										8.4
05-06-07		1.2	1.2										2.4
08-09-10		0.4											0.4
11-12-13													
14-15-16													
17-18-19													
20-21-22		0.6											0.6
23-24-25		0.4	0.2										0.6
26-27-28		3.2	1.8										5.0
29-30-31		2.4	0.6										3.0
32-33-34		3.4	0.2										3.6
TOTAL	2.8	16.6	10.8										30.2

MONTH : JANUARY

TIME : 12 UTC

MODEL : D

TABLE: Mean number of occurrences of concurrent wind direction (in 30 degree sector) and wind speed in specified ranges.

Wind Direction in tens of degree	WIND SPEED (KNOTS)												
	0	1 TO 5	6 TO 10	11 TO 15	16 TO 20	21 TO 25	26 TO 30	31 TO 35	36 TO 40	41 TO 45	46 TO 50	> 50	TOTAL
Calm	19.0												19.0
Variable													
35-36-01		0.2											0.2
02-03-04		1.4											1.4
05-06-07		1.2											1.2
08-09-10		0.2											0.2
11-12-13			0.2										0.2
14-15-16		1.2											1.2
17-18-19		2.2											2.2
20-21-22		0.4											0.4
23-24-25		2.0	0.2										2.2
26-27-28		1.0											1.0
29-30-31		0.4											0.4
32-33-34		0.4											0.4
TOTAL	19.0	10.6	0.4										30.0

MONTH : JANUARY

TIME : 15 UTC

MODEL : D

TABLE: Mean number of occurrences of concurrent wind direction (in 30 degree sector) and wind speed in specified ranges.

Wind Direction in tens of degree	WIND SPEED (KNOTS)												
	0	1 TO 5	6 TO 10	11 TO 15	16 TO 20	21 TO 25	26 TO 30	31 TO 35	36 TO 40	41 TO 45	46 TO 50	> 50	TOTAL
Calm	20.4												20.4
Variable													
35-36-01		0.2											0.2
02-03-04		0.2											0.2
05-06-07		0.2											0.2
08-09-10													
11-12-13													
14-15-16		0.8											0.8
17-18-19		3.8											3.8
20-21-22		3.6											3.6
23-24-25		1.2											1.2
26-27-28													
29-30-31													
32-33-34													
TOTAL	20.4	10.0											30.4

MONTH : JANUARY

TIME : 18 UTC

MODEL : D

TABLE: Mean number of occurrences of concurrent wind direction (in 30 degree sector) and wind speed in specified ranges.

Wind Direction in tens of degree	WIND SPEED (KNOTS)												
	0	1 TO 5	6 TO 10	11 TO 15	16 TO 20	21 TO 25	26 TO 30	31 TO 35	36 TO 40	41 TO 45	46 TO 50	> 50	TOTAL
Calm	26.2												26.2
Variable													
35-36-01													
02-03-04													
05-06-07		0.2											0.2
08-09-10													
11-12-13													
14-15-16		0.4											0.4
17-18-19		2.4											2.4
20-21-22		0.6											0.6
23-24-25													
26-27-28		0.2											0.2
29-30-31													
32-33-34													
TOTAL	26.2	3.8											30.0

MONTH : JANUARY

TIME : 21 UTC

MODEL : D

TABLE: Mean number of occurrences of concurrent wind direction (in 30 degree sector) and wind speed in specified ranges.

Wind Direction in tens of degree	WIND SPEED (KNOTS)												
	0	1 TO 5	6 TO 10	11 TO 15	16 TO 20	21 TO 25	26 TO 30	31 TO 35	36 TO 40	41 TO 45	46 TO 50	> 50	TOTAL
Calm	27.2												27.2
Variable													
35-36-01		0.2											0.2
02-03-04													
05-06-07													
08-09-10													
11-12-13													
14-15-16													
17-18-19		1.6											1.6
20-21-22		0.6											0.6
23-24-25		0.4											0.4
26-27-28		0.2											0.2
29-30-31													
32-33-34													
TOTAL	27.2	3.0											30.2

MONTH : FEBRUARY

TIME : 0 UTC

MODEL : D

TABLE: Mean number of occurrences of concurrent wind direction (in 30 degree sector) and wind speed in specified ranges.

Wind Direction in tens of degree	WIND SPEED (KNOTS)												
	0	1 TO 5	6 TO 10	11 TO 15	16 TO 20	21 TO 25	26 TO 30	31 TO 35	36 TO 40	41 TO 45	46 TO 50	> 50	TOTAL
Calm	17.8												17.8
Variable													
35-36-01		0.2											0.2
02-03-04		0.4	0.2										0.6
05-06-07		0.2											0.2
08-09-10		0.2											0.2
11-12-13													
14-15-16		0.2											0.2
17-18-19		1.4											1.4
20-21-22		0.6											0.6
23-24-25		0.2											0.2
26-27-28		0.2											0.2
29-30-31													
32-33-34													
TOTAL	17.8	3.6	0.2										21.6

MONTH : FEBRUARY

TIME : 3 UTC

MODEL : D

TABLE: Mean number of occurrences of concurrent wind direction (in 30 degree sector) and wind speed in specified ranges.

Wind Direction in tens of degree	WIND SPEED (KNOTS)												
	0	1 TO 5	6 TO 10	11 TO 15	16 TO 20	21 TO 25	26 TO 30	31 TO 35	36 TO 40	41 TO 45	46 TO 50	> 50	TOTAL
Calm	15.8												15.8
Variable													
35-36-01		1.2	0.2										1.4
02-03-04		0.6	0.2										0.8
05-06-07													
08-09-10		0.4											0.4
11-12-13													
14-15-16		0.4											0.4
17-18-19		1.8											1.8
20-21-22		1.0											1.0
23-24-25													
26-27-28													
29-30-31		0.2											0.2
32-33-34		0.2											0.2
TOTAL	15.8	5.8	0.4										22.0

MONTH : FEBRUARY

TIME : 6 UTC

MODEL : D

TABLE: Mean number of occurrences of concurrent wind direction (in 30 degree sector) and wind speed in specified ranges.

Wind Direction in tens of degree	WIND SPEED (KNOTS)												
	0	1 TO 5	6 TO 10	11 TO 15	16 TO 20	21 TO 25	26 TO 30	31 TO 35	36 TO 40	41 TO 45	46 TO 50	> 50	TOTAL
Calm	3.0												3.0
Variable													
35-36-01		2.8	0.8										3.6
02-03-04		2.2	2.2										4.4
05-06-07		0.8	0.2										1.0
08-09-10		0.2											0.2
11-12-13		0.4											0.4
14-15-16													
17-18-19		0.2											0.2
20-21-22		0.6											0.6
23-24-25		1.0											1.0
26-27-28		1.6	0.6										2.2
29-30-31		2.0	1.0	0.2									3.2
32-33-34		1.6	0.8										2.4
TOTAL	3.0	13.4	5.6	0.2									22.2

MONTH : FEBRUARY

TIME : 9 UTC

MODEL : D

TABLE: Mean number of occurrences of concurrent wind direction (in 30 degree sector) and wind speed in specified ranges.

Wind Direction in tens of degree	WIND SPEED (KNOTS)												
	0	1 TO 5	6 TO 10	11 TO 15	16 TO 20	21 TO 25	26 TO 30	31 TO 35	36 TO 40	41 TO 45	46 TO 50	> 50	TOTAL
Calm	1.2												1.2
Variable													
35-36-01		0.6	1.8										2.4
02-03-04		1.4	2.2										3.6
05-06-07		1.2	0.4										1.6
08-09-10			0.2										0.2
11-12-13		0.4											0.4
14-15-16		0.2											0.2
17-18-19		0.2											0.2
20-21-22		0.4	0.2										0.6
23-24-25		1.4	0.8										2.2
26-27-28		1.6	1.2	0.6									3.4
29-30-31		1.6	1.8										3.4
32-33-34		2.0	1.0										3.0
TOTAL	1.2	11.0	9.6	0.6									22.4

MONTH : FEBRUARY

TIME : 12 UTC

MODEL : D

TABLE: Mean number of occurrences of concurrent wind direction (in 30 degree sector) and wind speed in specified ranges.

Wind Direction in tens of degree	WIND SPEED (KNOTS)												
	0	1 TO 5	6 TO 10	11 TO 15	16 TO 20	21 TO 25	26 TO 30	31 TO 35	36 TO 40	41 TO 45	46 TO 50	> 50	TOTAL
Calm	12.2												12.2
Variable													
35-36-01		1.2											1.2
02-03-04		0.8	0.8										1.6
05-06-07		0.6											0.6
08-09-10		0.4											0.4
11-12-13			0.2										0.2
14-15-16		0.4											0.4
17-18-19		0.8											0.8
20-21-22													
23-24-25		2.0											2.0
26-27-28		2.2											2.2
29-30-31		0.6											0.6
32-33-34		0.2											0.2
TOTAL	12.2	9.2	1.0										22.4

MONTH : FEBRUARY

TIME : 15 UTC

MODEL : D

TABLE: Mean number of occurrences of concurrent wind direction (in 30 degree sector) and wind speed in specified ranges.

Wind Direction in tens of degree	WIND SPEED (KNOTS)												
	0	1 TO 5	6 TO 10	11 TO 15	16 TO 20	21 TO 25	26 TO 30	31 TO 35	36 TO 40	41 TO 45	46 TO 50	> 50	TOTAL
Calm	13.6												13.6
Variable													
35-36-01		0.2											0.2
02-03-04		0.4											0.4
05-06-07		0.2											0.2
08-09-10													
11-12-13													
14-15-16		0.4											0.4
17-18-19		4.4	0.2										4.6
20-21-22		2.2	0.2										2.4
23-24-25		0.6											0.6
26-27-28													
29-30-31													
32-33-34													
TOTAL	13.6	8.4	0.4										22.4

MONTH : FEBRUARY

TIME : 18 UTC

MODEL : D

TABLE: Mean number of occurrences of concurrent wind direction (in 30 degree sector) and wind speed in specified ranges.

Wind Direction in tens of degree	WIND SPEED (KNOTS)												
	0	1 TO 5	6 TO 10	11 TO 15	16 TO 20	21 TO 25	26 TO 30	31 TO 35	36 TO 40	41 TO 45	46 TO 50	> 50	TOTAL
Calm	16.2												16.2
Variable													
35-36-01		0.4											0.4
02-03-04		0.4											0.4
05-06-07		0.4	0.2										0.6
08-09-10													
11-12-13													
14-15-16		0.4											0.4
17-18-19		2.6											2.6
20-21-22		0.8											0.8
23-24-25		0.2											0.2
26-27-28													
29-30-31													
32-33-34													
TOTAL	16.2	5.2	0.2										21.6

MONTH : FEBRUARY

TIME : 21 UTC

MODEL : D

TABLE: Mean number of occurrences of concurrent wind direction (in 30 degree sector) and wind speed in specified ranges.

Wind Direction in tens of degree	WIND SPEED (KNOTS)												
	0	1 TO 5	6 TO 10	11 TO 15	16 TO 20	21 TO 25	26 TO 30	31 TO 35	36 TO 40	41 TO 45	46 TO 50	> 50	TOTAL
Calm	19.0												19.0
Variable													
35-36-01		0.2											0.2
02-03-04		0.6											0.6
05-06-07													
08-09-10													
11-12-13			0.2										0.2
14-15-16													
17-18-19		1.8											1.8
20-21-22		0.2											0.2
23-24-25			0.2										0.2
26-27-28													
29-30-31													
32-33-34													
TOTAL	19.0	2.8	0.4										22.2

MONTH : MARCH

TIME : 0 UTC

MODEL : D

TABLE: Mean number of occurrences of concurrent wind direction (in 30 degree sector) and wind speed in specified ranges.

Wind Direction in tens of degree	WIND SPEED (KNOTS)												
	0	1 TO 5	6 TO 10	11 TO 15	16 TO 20	21 TO 25	26 TO 30	31 TO 35	36 TO 40	41 TO 45	46 TO 50	> 50	TOTAL
Calm	22.2												22.2
Variable													
35-36-01		0.6	0.2										0.8
02-03-04		1.2	0.4										1.6
05-06-07		0.8	0.2										1.0
08-09-10													
11-12-13		0.2											0.2
14-15-16		0.2											0.2
17-18-19		1.4	0.2										1.6
20-21-22		1.4	0.2										1.6
23-24-25		0.8	0.2										1.0
26-27-28													
29-30-31													
32-33-34		0.2											0.2
TOTAL	22.2	6.8	1.4										30.4

MONTH : MARCH

TIME : 3 UTC

MODEL : D

TABLE: Mean number of occurrences of concurrent wind direction (in 30 degree sector) and wind speed in specified ranges.

Wind Direction in tens of degree	WIND SPEED (KNOTS)												
	0	1 TO 5	6 TO 10	11 TO 15	16 TO 20	21 TO 25	26 TO 30	31 TO 35	36 TO 40	41 TO 45	46 TO 50	> 50	TOTAL
Calm	15.0												15.0
Variable													
35-36-01		1.4	0.4	0.2									2.0
02-03-04		2.2	2.4										4.6
05-06-07		1.8	2.0										3.8
08-09-10		0.6		0.2									0.8
11-12-13													
14-15-16													
17-18-19		0.2											0.2
20-21-22		1.4	0.4										1.8
23-24-25		0.6	0.4										1.0
26-27-28		0.4	0.2										0.6
29-30-31		0.2											0.2
32-33-34		0.6	0.2										0.8
TOTAL	15.0	9.4	6.0	0.4									30.8

MONTH : MARCH

TIME : 6 UTC

MODEL : D

TABLE: Mean number of occurrences of concurrent wind direction (in 30 degree sector) and wind speed in specified ranges.

Wind Direction in tens of degree	WIND SPEED (KNOTS)												
	0	1 TO 5	6 TO 10	11 TO 15	16 TO 20	21 TO 25	26 TO 30	31 TO 35	36 TO 40	41 TO 45	46 TO 50	> 50	TOTAL
Calm	3.0												3.0
Variable													
35-36-01		1.4	2.4										3.8
02-03-04		2.0	5.6	1.2									8.8
05-06-07		1.4	1.4										2.8
08-09-10			0.2										0.2
11-12-13													
14-15-16			0.2										0.2
17-18-19													
20-21-22		0.8	0.2										1.0
23-24-25		1.0	0.8	0.2									2.0
26-27-28		1.0	1.0	0.2									2.2
29-30-31		0.8	1.6	0.2									2.6
32-33-34		3.0	1.4										4.4
TOTAL	3.0	11.4	14.8	1.8									31.0

MONTH : MARCH

TIME : 9 UTC

MODEL : D

TABLE: Mean number of occurrences of concurrent wind direction (in 30 degree sector) and wind speed in specified ranges.

Wind Direction in tens of degree	WIND SPEED (KNOTS)												
	0	1 TO 5	6 TO 10	11 TO 15	16 TO 20	21 TO 25	26 TO 30	31 TO 35	36 TO 40	41 TO 45	46 TO 50	> 50	TOTAL
Calm	1.2												1.2
Variable													
35-36-01		1.8	1.6										3.4
02-03-04		2.8	3.4	0.2									6.4
05-06-07		1.4	2.4										3.8
08-09-10		0.4											0.4
11-12-13		0.2											0.2
14-15-16		0.2	0.2										0.4
17-18-19		0.4											0.4
20-21-22		0.4	0.4										0.8
23-24-25		0.6	0.4	0.4	0.2								1.6
26-27-28		1.0	2.4	1.2									4.6
29-30-31		1.0	3.4	0.2									4.6
32-33-34		1.4	1.0	0.2									2.6
TOTAL	1.2	11.6	15.2	2.2	0.2								30.4

MONTH : MARCH

TIME : 12 UTC

MODEL : D

TABLE: Mean number of occurrences of concurrent wind direction (in 30 degree sector) and wind speed in specified ranges.

Wind Direction in tens of degree	WIND SPEED (KNOTS)												
	0	1 TO 5	6 TO 10	11 TO 15	16 TO 20	21 TO 25	26 TO 30	31 TO 35	36 TO 40	41 TO 45	46 TO 50	> 50	TOTAL
Calm	10.8												10.8
Variable													
35-36-01		2.0	0.2										2.2
02-03-04		2.6	1.6										4.2
05-06-07		3.4											3.4
08-09-10		0.4		0.2									0.6
11-12-13		0.2											0.2
14-15-16													
17-18-19		0.2											0.2
20-21-22		0.2	0.2										0.4
23-24-25		0.8	0.6	0.2									1.6
26-27-28		1.4	1.6										3.0
29-30-31		1.8	0.6	0.2									2.6
32-33-34		1.6											1.6
TOTAL	10.8	14.6	4.8	0.6									30.8

MONTH : MARCH

TIME : 15 UTC

MODEL : D

TABLE: Mean number of occurrences of concurrent wind direction (in 30 degree sector) and wind speed in specified ranges.

Wind Direction in tens of degree	WIND SPEED (KNOTS)												
	0	1 TO 5	6 TO 10	11 TO 15	16 TO 20	21 TO 25	26 TO 30	31 TO 35	36 TO 40	41 TO 45	46 TO 50	> 50	TOTAL
Calm	17.2												17.2
Variable													
35-36-01		0.2											0.2
02-03-04		0.6	0.8										1.4
05-06-07		1.0											1.0
08-09-10													
11-12-13		0.2											0.2
14-15-16		0.6											0.6
17-18-19		3.6	0.4										4.0
20-21-22		2.8	1.0	0.2									4.0
23-24-25		0.2	0.8										1.0
26-27-28													
29-30-31		0.2											0.2
32-33-34		0.8	0.2										1.0
TOTAL	17.2	10.2	3.2	0.2									30.8

MONTH : MARCH

TIME : 18 UTC

MODEL : D

TABLE: Mean number of occurrences of concurrent wind direction (in 30 degree sector) and wind speed in specified ranges.

Wind Direction in tens of degree	WIND SPEED (KNOTS)												
	0	1 TO 5	6 TO 10	11 TO 15	16 TO 20	21 TO 25	26 TO 30	31 TO 35	36 TO 40	41 TO 45	46 TO 50	> 50	TOTAL
Calm	18.6												18.6
Variable													
35-36-01		0.6											0.6
02-03-04		2.0	1.0	0.2									3.2
05-06-07		0.8	0.2										1.0
08-09-10		0.2											0.2
11-12-13													
14-15-16			0.2										0.2
17-18-19		3.4	0.6										4.0
20-21-22		0.8	0.6										1.4
23-24-25		0.4		0.2									0.6
26-27-28		0.2											0.2
29-30-31			0.2										0.2
32-33-34			0.2										0.2
TOTAL	18.6	8.4	3.0	0.4									30.4

MONTH : MARCH

TIME : 21 UTC

MODEL : D

TABLE: Mean number of occurrences of concurrent wind direction (in 30 degree sector) and wind speed in specified ranges.

Wind Direction in tens of degree	WIND SPEED (KNOTS)												
	0	1 TO 5	6 TO 10	11 TO 15	16 TO 20	21 TO 25	26 TO 30	31 TO 35	36 TO 40	41 TO 45	46 TO 50	> 50	TOTAL
Calm	21.6												21.6
Variable													
35-36-01		0.2		0.2									0.4
02-03-04		1.0	0.6										1.6
05-06-07		1.0											1.0
08-09-10			0.2										0.2
11-12-13													
14-15-16		0.2											0.2
17-18-19		1.8	0.2										2.0
20-21-22		2.2											2.2
23-24-25			0.2	0.2									0.4
26-27-28		0.6											0.6
29-30-31		0.2											0.2
32-33-34		0.4											0.4
TOTAL	21.6	7.6	1.2	0.4									30.8

MONTH : APRIL

TIME : 0 UTC

MODEL : D

TABLE: Mean number of occurrences of concurrent wind direction (in 30 degree sector) and wind speed in specified ranges.

Wind Direction in tens of degree	WIND SPEED (KNOTS)												
	0	1 TO 5	6 TO 10	11 TO 15	16 TO 20	21 TO 25	26 TO 30	31 TO 35	36 TO 40	41 TO 45	46 TO 50	> 50	TOTAL
Calm	17.2												17.2
Variable													
35-36-01		0.8	1.0										1.8
02-03-04		1.6	1.0	0.2									2.8
05-06-07		2.0	0.4										2.4
08-09-10		0.2	0.4										0.6
11-12-13		0.4											0.4
14-15-16		0.2	0.2										0.4
17-18-19		1.0	0.2										1.2
20-21-22		0.4	0.2										0.6
23-24-25		0.2		0.2									0.4
26-27-28		0.4											0.4
29-30-31		0.4	0.2										0.6
32-33-34		0.2	0.2										0.4
TOTAL	17.2	7.8	3.8	0.4									29.2

MONTH : APRIL

TIME : 3 UTC

MODEL : D

TABLE: Mean number of occurrences of concurrent wind direction (in 30 degree sector) and wind speed in specified ranges.

Wind Direction in tens of degree	WIND SPEED (KNOTS)												
	0	1 TO 5	6 TO 10	11 TO 15	16 TO 20	21 TO 25	26 TO 30	31 TO 35	36 TO 40	41 TO 45	46 TO 50	> 50	TOTAL
Calm	8.2												8.2
Variable													
35-36-01		0.8	1.6										2.4
02-03-04		3.4	3.2										6.6
05-06-07		2.8	2.4										5.2
08-09-10		0.6	0.2										0.8
11-12-13		0.4											0.4
14-15-16		0.2											0.2
17-18-19		0.4	0.4										0.8
20-21-22		0.8	0.2										1.0
23-24-25		0.8	0.2										1.0
26-27-28		0.6	0.6										1.2
29-30-31				0.2									0.2
32-33-34		0.8	0.2										1.0
TOTAL	8.2	11.6	9.0	0.2									29.0

MONTH : APRIL

TIME : 6 UTC

MODEL : D

TABLE: Mean number of occurrences of concurrent wind direction (in 30 degree sector) and wind speed in specified ranges.

Wind Direction in tens of degree	WIND SPEED (KNOTS)												
	0	1 TO 5	6 TO 10	11 TO 15	16 TO 20	21 TO 25	26 TO 30	31 TO 35	36 TO 40	41 TO 45	46 TO 50	> 50	TOTAL
Calm	1.6												1.6
Variable													
35-36-01		1.8	4.4	0.4									6.6
02-03-04		1.0	4.8	0.6									6.4
05-06-07		1.6	2.6										4.2
08-09-10		0.2	0.4										0.6
11-12-13			0.2										0.2
14-15-16			0.4										0.4
17-18-19			0.2										0.2
20-21-22		0.6	0.2										0.8
23-24-25		0.6											0.6
26-27-28		0.2	1.0	0.4									1.6
29-30-31		1.0	2.0										3.0
32-33-34		1.6	1.6										3.2
TOTAL	1.6	8.6	17.8	1.4									29.4

MONTH : APRIL

TIME : 9 UTC

MODEL : D

TABLE: Mean number of occurrences of concurrent wind direction (in 30 degree sector) and wind speed in specified ranges.

Wind Direction in tens of degree	WIND SPEED (KNOTS)												
	0	1 TO 5	6 TO 10	11 TO 15	16 TO 20	21 TO 25	26 TO 30	31 TO 35	36 TO 40	41 TO 45	46 TO 50	> 50	TOTAL
Calm	1.0												1.0
Variable													
35-36-01		0.8	2.6	0.8									4.2
02-03-04		1.6	5.0	0.8									7.4
05-06-07		1.2	3.0										4.2
08-09-10		0.6	0.2	0.2									1.0
11-12-13													
14-15-16		0.2											0.2
17-18-19		0.2											0.2
20-21-22		0.2	0.4										0.6
23-24-25			1.0	0.2	0.2								1.4
26-27-28		0.4	1.4	1.2									3.0
29-30-31		1.2	2.0	0.2									3.4
32-33-34		1.6	1.4										3.0
TOTAL	1.0	8.0	17.0	3.4	0.2								29.6

MONTH : APRIL

TIME : 12 UTC

MODEL : D

TABLE: Mean number of occurrences of concurrent wind direction (in 30 degree sector) and wind speed in specified ranges.

Wind Direction in tens of degree	WIND SPEED (KNOTS)												
	0	1 TO 5	6 TO 10	11 TO 15	16 TO 20	21 TO 25	26 TO 30	31 TO 35	36 TO 40	41 TO 45	46 TO 50	> 50	TOTAL
Calm	3.6												3.6
Variable													
35-36-01		1.4	1.4										2.8
02-03-04		5.4	2.2	0.2									7.8
05-06-07		2.4	1.4	0.4									4.2
08-09-10		1.0	0.2										1.2
11-12-13		0.2											0.2
14-15-16													
17-18-19		0.4	0.6										1.0
20-21-22		0.2	0.4										0.6
23-24-25		0.8		0.4									1.2
26-27-28		0.6	0.8	0.4									1.8
29-30-31		1.6	0.2										1.8
32-33-34		2.8	0.4										3.2
TOTAL	3.6	16.8	7.6	1.4									29.4

MONTH : APRIL

TIME : 15 UTC

MODEL : D

TABLE: Mean number of occurrences of concurrent wind direction (in 30 degree sector) and wind speed in specified ranges.

Wind Direction in tens of degree	WIND SPEED (KNOTS)												
	0	1 TO 5	6 TO 10	11 TO 15	16 TO 20	21 TO 25	26 TO 30	31 TO 35	36 TO 40	41 TO 45	46 TO 50	> 50	TOTAL
Calm	15.2												15.2
Variable													
35-36-01		0.8	0.2										1.0
02-03-04		2.4	1.8	0.2	0.2								4.6
05-06-07		1.4	1.2		0.2								2.8
08-09-10			0.2										0.2
11-12-13													
14-15-16		0.6	0.2										0.8
17-18-19		1.0	0.4										1.4
20-21-22		1.0	0.4				0.2						1.6
23-24-25		0.4											0.4
26-27-28		0.4											0.4
29-30-31													
32-33-34		0.4											0.4
TOTAL	15.2	8.4	4.4	0.2	0.4		0.2						28.8

MONTH : APRIL

TIME : 18 UTC

MODEL : D

TABLE: Mean number of occurrences of concurrent wind direction (in 30 degree sector) and wind speed in specified ranges.

Wind Direction in tens of degree	WIND SPEED (KNOTS)												
	0	1 TO 5	6 TO 10	11 TO 15	16 TO 20	21 TO 25	26 TO 30	31 TO 35	36 TO 40	41 TO 45	46 TO 50	> 50	TOTAL
Calm	16.8												16.8
Variable													
35-36-01		0.6	0.4										1.0
02-03-04		1.4	1.2										2.6
05-06-07		1.8	0.8	0.2									2.8
08-09-10		0.4	0.2										0.6
11-12-13			0.2										0.2
14-15-16		0.2	0.2										0.4
17-18-19		0.6	0.2		0.2								1.0
20-21-22		0.8	0.2										1.0
23-24-25		0.6	0.2										0.8
26-27-28		0.4	0.2										0.6
29-30-31		0.6											0.6
32-33-34		0.4	0.2										0.6
TOTAL	16.8	7.8	4.0	0.2	0.2								29.0

MONTH : APRIL

TIME : 21 UTC

MODEL : D

TABLE: Mean number of occurrences of concurrent wind direction (in 30 degree sector) and wind speed in specified ranges.

Wind Direction in tens of degree	WIND SPEED (KNOTS)												
	0	1 TO 5	6 TO 10	11 TO 15	16 TO 20	21 TO 25	26 TO 30	31 TO 35	36 TO 40	41 TO 45	46 TO 50	> 50	TOTAL
Calm	17.6												17.6
Variable													
35-36-01		0.8											0.8
02-03-04		2.0	0.8										2.8
05-06-07		1.8	0.6										2.4
08-09-10		0.8											0.8
11-12-13													
14-15-16		0.6	0.2										0.8
17-18-19		0.8	0.2										1.0
20-21-22		0.6	0.2	0.4									1.2
23-24-25			0.6										0.6
26-27-28													
29-30-31		0.2											0.2
32-33-34		0.2	0.2		0.4								0.8
TOTAL	17.6	7.8	2.8	0.4	0.4								29.0

MONTH : MAY

TIME : 0 UTC

MODEL : D

TABLE: Mean number of occurrences of concurrent wind direction (in 30 degree sector) and wind speed in specified ranges.

Wind Direction in tens of degree	WIND SPEED (KNOTS)												
	0	1 TO 5	6 TO 10	11 TO 15	16 TO 20	21 TO 25	26 TO 30	31 TO 35	36 TO 40	41 TO 45	46 TO 50	> 50	TOTAL
Calm	18.2												18.2
Variable													
35-36-01		0.6	0.2										0.8
02-03-04		3.2	0.4										3.6
05-06-07		1.4	0.8										2.2
08-09-10		0.2	0.2										0.4
11-12-13		0.2											0.2
14-15-16		0.8											0.8
17-18-19		1.2	0.4										1.6
20-21-22		0.6											0.6
23-24-25		0.4	0.6										1.0
26-27-28		0.2	0.2	0.2									0.6
29-30-31		0.2											0.2
32-33-34		0.2		0.2									0.4
TOTAL	18.2	9.2	2.8	0.4									30.6

MONTH : MAY

TIME : 3 UTC

MODEL : D

TABLE: Mean number of occurrences of concurrent wind direction (in 30 degree sector) and wind speed in specified ranges.

Wind Direction in tens of degree	WIND SPEED (KNOTS)												
	0	1 TO 5	6 TO 10	11 TO 15	16 TO 20	21 TO 25	26 TO 30	31 TO 35	36 TO 40	41 TO 45	46 TO 50	> 50	TOTAL
Calm	8.2												8.2
Variable													
35-36-01		0.8	0.6										1.4
02-03-04		4.8	3.2	0.4									8.4
05-06-07		2.2	1.8	0.4									4.4
08-09-10		0.6	0.4										1.0
11-12-13													
14-15-16		0.2	0.2										0.4
17-18-19		1.4	0.2										1.6
20-21-22		0.8	0.2										1.0
23-24-25		0.6											0.6
26-27-28		1.6											1.6
29-30-31		1.0											1.0
32-33-34		1.0	0.2										1.2
TOTAL	8.2	15.0	6.8	0.8									30.8

MONTH : MAY

TIME : 6 UTC

MODEL : D

TABLE: Mean number of occurrences of concurrent wind direction (in 30 degree sector) and wind speed in specified ranges.

Wind Direction in tens of degree	WIND SPEED (KNOTS)												
	0	1 TO 5	6 TO 10	11 TO 15	16 TO 20	21 TO 25	26 TO 30	31 TO 35	36 TO 40	41 TO 45	46 TO 50	> 50	TOTAL
Calm	2.4												2.4
Variable													
35-36-01		2.2	2.6	0.4									5.2
02-03-04		1.2	5.0	0.8									7.0
05-06-07		2.0	1.8		0.2								4.0
08-09-10		0.4	0.4										0.8
11-12-13													
14-15-16		0.2	0.4										0.6
17-18-19		0.4	0.6										1.0
20-21-22		0.2	0.2										0.4
23-24-25		0.2	0.6										0.8
26-27-28		0.8	0.8	0.4									2.0
29-30-31		0.8	1.2										2.0
32-33-34		2.4	1.8										4.2
TOTAL	2.4	10.8	15.4	1.6	0.2								30.4

MONTH : MAY

TIME : 9 UTC

MODEL : D

TABLE: Mean number of occurrences of concurrent wind direction (in 30 degree sector) and wind speed in specified ranges.

Wind Direction in tens of degree	WIND SPEED (KNOTS)												
	0	1 TO 5	6 TO 10	11 TO 15	16 TO 20	21 TO 25	26 TO 30	31 TO 35	36 TO 40	41 TO 45	46 TO 50	> 50	TOTAL
Calm	3.2												3.2
Variable													
35-36-01		0.8	3.0	0.2									4.0
02-03-04		2.4	2.4	0.8									5.6
05-06-07		1.6	1.8										3.4
08-09-10		0.8	0.2										1.0
11-12-13		0.2	0.2										0.4
14-15-16			0.2										0.2
17-18-19		0.2	0.8	0.2									1.2
20-21-22		0.2	0.6										0.8
23-24-25		0.6	0.4	0.2									1.2
26-27-28		1.2	1.4	0.2									2.8
29-30-31		1.4	1.4										2.8
32-33-34		2.8	1.0										3.8
TOTAL	3.2	12.2	13.4	1.6									30.4

MONTH : MAY

TIME : 12 UTC

MODEL : D

TABLE: Mean number of occurrences of concurrent wind direction (in 30 degree sector) and wind speed in specified ranges.

Wind Direction in tens of degree	WIND SPEED (KNOTS)												
	0	1 TO 5	6 TO 10	11 TO 15	16 TO 20	21 TO 25	26 TO 30	31 TO 35	36 TO 40	41 TO 45	46 TO 50	> 50	TOTAL
Calm	6.6												6.6
Variable													
35-36-01		2.2	0.4										2.6
02-03-04		5.0	3.6										8.6
05-06-07		2.4	0.8										3.2
08-09-10		0.2											0.2
11-12-13		0.2	0.2										0.4
14-15-16		1.0	0.4										1.4
17-18-19		0.6	0.6										1.2
20-21-22		0.2	0.2										0.4
23-24-25		0.6	0.4	0.2									1.2
26-27-28		1.6											1.6
29-30-31		0.2											0.2
32-33-34		1.0	1.0										2.0
TOTAL	6.6	15.2	7.6	0.2									29.6

MONTH : MAY

TIME : 15 UTC

MODEL : D

TABLE: Mean number of occurrences of concurrent wind direction (in 30 degree sector) and wind speed in specified ranges.

Wind Direction in tens of degree	WIND SPEED (KNOTS)												
	0	1 TO 5	6 TO 10	11 TO 15	16 TO 20	21 TO 25	26 TO 30	31 TO 35	36 TO 40	41 TO 45	46 TO 50	> 50	TOTAL
Calm	16.6												16.6
Variable													
35-36-01		0.8	0.2										1.0
02-03-04		4.0	0.6										4.6
05-06-07		2.8	0.8										3.6
08-09-10		0.8											0.8
11-12-13		0.2	0.2										0.4
14-15-16		1.2											1.2
17-18-19		0.4	0.2										0.6
20-21-22		0.6		0.2									0.8
23-24-25		0.6											0.6
26-27-28													
29-30-31													
32-33-34		0.2											0.2
TOTAL	16.6	11.6	2.0	0.2									30.4

MONTH : MAY

TIME : 18 UTC

MODEL : D

TABLE: Mean number of occurrences of concurrent wind direction (in 30 degree sector) and wind speed in specified ranges.

Wind Direction in tens of degree	WIND SPEED (KNOTS)												
	0	1 TO 5	6 TO 10	11 TO 15	16 TO 20	21 TO 25	26 TO 30	31 TO 35	36 TO 40	41 TO 45	46 TO 50	> 50	TOTAL
Calm	18.0												18.0
Variable													
35-36-01		1.0	0.2										1.2
02-03-04		1.0	2.0										3.0
05-06-07		2.8	1.4	0.2									4.4
08-09-10		0.2											0.2
11-12-13													
14-15-16		0.2											0.2
17-18-19		0.4	0.4										0.8
20-21-22		1.0											1.0
23-24-25		0.2											0.2
26-27-28		0.2	0.2										0.4
29-30-31		0.6											0.6
32-33-34			0.2										0.2
TOTAL	18.0	7.6	4.4	0.2									30.2

MONTH : MAY

TIME : 21 UTC

MODEL : D

TABLE: Mean number of occurrences of concurrent wind direction (in 30 degree sector) and wind speed in specified ranges.

Wind Direction in tens of degree	WIND SPEED (KNOTS)												
	0	1 TO 5	6 TO 10	11 TO 15	16 TO 20	21 TO 25	26 TO 30	31 TO 35	36 TO 40	41 TO 45	46 TO 50	> 50	TOTAL
Calm	21.2												21.2
Variable													
35-36-01		1.0											1.0
02-03-04		2.0	0.4										2.4
05-06-07		1.2	0.8										2.0
08-09-10		0.4											0.4
11-12-13		0.4											0.4
14-15-16													
17-18-19		1.0	0.2										1.2
20-21-22													
23-24-25		0.6											0.6
26-27-28		0.6	0.2	0.2									1.0
29-30-31			0.2										0.2
32-33-34			0.2										0.2
TOTAL	21.2	7.2	2.0	0.2									30.6

MONTH : JUNE

TIME : 0 UTC

MODEL : D

TABLE: Mean number of occurrences of concurrent wind direction (in 30 degree sector) and wind speed in specified ranges.

Wind Direction in tens of degree	WIND SPEED (KNOTS)												
	0	1 TO 5	6 TO 10	11 TO 15	16 TO 20	21 TO 25	26 TO 30	31 TO 35	36 TO 40	41 TO 45	46 TO 50	> 50	TOTAL
Calm	21.2												21.2
Variable													
35-36-01		0.4	0.2										0.6
02-03-04		1.2	0.2	0.2									1.6
05-06-07		0.4	0.8										1.2
08-09-10		0.6											0.6
11-12-13													
14-15-16		0.2											0.2
17-18-19		1.0											1.0
20-21-22		0.6	0.4										1.0
23-24-25		0.4	0.2										0.6
26-27-28		0.6											0.6
29-30-31		0.2	0.2										0.4
32-33-34													
TOTAL	21.2	5.6	2.0	0.2									29.0

MONTH : JUNE

TIME : 3 UTC

MODEL : D

TABLE: Mean number of occurrences of concurrent wind direction (in 30 degree sector) and wind speed in specified ranges.

Wind Direction in tens of degree	WIND SPEED (KNOTS)												
	0	1 TO 5	6 TO 10	11 TO 15	16 TO 20	21 TO 25	26 TO 30	31 TO 35	36 TO 40	41 TO 45	46 TO 50	> 50	TOTAL
Calm	12.2												12.2
Variable													
35-36-01		1.2	0.4										1.6
02-03-04		2.2	1.6	0.2									4.0
05-06-07		3.2	1.0	0.4									4.6
08-09-10		0.4											0.4
11-12-13		0.2											0.2
14-15-16		0.2	0.2										0.4
17-18-19		0.6											0.6
20-21-22		0.4											0.4
23-24-25		1.6											1.6
26-27-28		0.8											0.8
29-30-31		1.0	0.2										1.2
32-33-34		0.8	0.4										1.2
TOTAL	12.2	12.6	3.8	0.6									29.2

MONTH : JUNE

TIME : 6 UTC

MODEL : D

TABLE: Mean number of occurrences of concurrent wind direction (in 30 degree sector) and wind speed in specified ranges.

Wind Direction in tens of degree	WIND SPEED (KNOTS)												
	0	1 TO 5	6 TO 10	11 TO 15	16 TO 20	21 TO 25	26 TO 30	31 TO 35	36 TO 40	41 TO 45	46 TO 50	> 50	TOTAL
Calm	4.6												4.6
Variable													
35-36-01		1.2	3.4										4.6
02-03-04		1.2	3.4	0.2									4.8
05-06-07		1.2	1.4	0.2									2.8
08-09-10		0.6	0.2										0.8
11-12-13													
14-15-16			0.2										0.2
17-18-19		0.2											0.2
20-21-22		0.8	0.2										1.0
23-24-25		0.4	0.2										0.6
26-27-28		1.6	1.2	0.2									3.0
29-30-31		1.2	1.4	0.4									3.0
32-33-34		1.0	2.2										3.2
TOTAL	4.6	9.4	13.8	1.0									28.8

MONTH : JUNE

TIME : 9 UTC

MODEL : D

TABLE: Mean number of occurrences of concurrent wind direction (in 30 degree sector) and wind speed in specified ranges.

Wind Direction in tens of degree	WIND SPEED (KNOTS)												
	0	1 TO 5	6 TO 10	11 TO 15	16 TO 20	21 TO 25	26 TO 30	31 TO 35	36 TO 40	41 TO 45	46 TO 50	> 50	TOTAL
Calm	2.0												2.0
Variable													
35-36-01		2.0	1.0	0.4									3.4
02-03-04		1.2	3.0	0.2									4.4
05-06-07		0.8	1.2	0.2	0.2								2.4
08-09-10			0.2										0.2
11-12-13		0.4											0.4
14-15-16		0.4	0.2										0.6
17-18-19		0.8											0.8
20-21-22		1.2	0.6	0.4									2.2
23-24-25		0.4	0.8	0.2									1.4
26-27-28		2.2	3.0	0.2									5.4
29-30-31		0.8	1.0										1.8
32-33-34		3.2	1.2										4.4
TOTAL	2.0	13.4	12.2	1.6	0.2								29.4

MONTH : JUNE

TIME : 12 UTC

MODEL : D

TABLE: Mean number of occurrences of concurrent wind direction (in 30 degree sector) and wind speed in specified ranges.

Wind Direction in tens of degree	WIND SPEED (KNOTS)												
	0	1 TO 5	6 TO 10	11 TO 15	16 TO 20	21 TO 25	26 TO 30	31 TO 35	36 TO 40	41 TO 45	46 TO 50	> 50	TOTAL
Calm	8.8												8.8
Variable													
35-36-01		0.8											0.8
02-03-04		2.4	2.4	0.2									5.0
05-06-07		1.6	0.6	0.6									2.8
08-09-10		0.2											0.2
11-12-13													
14-15-16		0.8											0.8
17-18-19		1.2	0.2										1.4
20-21-22		1.4	1.2										2.6
23-24-25		1.2	0.4										1.6
26-27-28		1.6	1.0										2.6
29-30-31		1.2											1.2
32-33-34		1.8											1.8
TOTAL	8.8	14.2	5.8	0.8									29.6

MONTH : JUNE

TIME : 15 UTC

MODEL : D

TABLE: Mean number of occurrences of concurrent wind direction (in 30 degree sector) and wind speed in specified ranges.

Wind Direction in tens of degree	WIND SPEED (KNOTS)												
	0	1 TO 5	6 TO 10	11 TO 15	16 TO 20	21 TO 25	26 TO 30	31 TO 35	36 TO 40	41 TO 45	46 TO 50	> 50	TOTAL
Calm	14.6												14.6
Variable													
35-36-01			0.4										0.4
02-03-04		1.8	0.4										2.2
05-06-07		1.6	0.6										2.2
08-09-10													
11-12-13		0.2											0.2
14-15-16		1.2											1.2
17-18-19		2.2	0.2										2.4
20-21-22		2.4	0.4										2.8
23-24-25		2.0											2.0
26-27-28		0.2											0.2
29-30-31		0.4											0.4
32-33-34		0.2											0.2
TOTAL	14.6	12.2	2.0										28.8

MONTH : JUNE

TIME : 18 UTC

MODEL : D

TABLE: Mean number of occurrences of concurrent wind direction (in 30 degree sector) and wind speed in specified ranges.

Wind Direction in tens of degree	WIND SPEED (KNOTS)												
	0	1 TO 5	6 TO 10	11 TO 15	16 TO 20	21 TO 25	26 TO 30	31 TO 35	36 TO 40	41 TO 45	46 TO 50	> 50	TOTAL
Calm	18.6												18.6
Variable													
35-36-01		1.0											1.0
02-03-04		1.2	0.4										1.6
05-06-07		1.8	0.8										2.6
08-09-10		0.4											0.4
11-12-13													
14-15-16		0.2											0.2
17-18-19		1.8	0.2										2.0
20-21-22		0.4	0.4										0.8
23-24-25		0.6		0.2									0.8
26-27-28				0.2									0.2
29-30-31													
32-33-34													
TOTAL	18.6	7.4	1.8	0.4									28.2

MONTH : JUNE

TIME : 21 UTC

MODEL : D

TABLE: Mean number of occurrences of concurrent wind direction (in 30 degree sector) and wind speed in specified ranges.

Wind Direction in tens of degree	WIND SPEED (KNOTS)												
	0	1 TO 5	6 TO 10	11 TO 15	16 TO 20	21 TO 25	26 TO 30	31 TO 35	36 TO 40	41 TO 45	46 TO 50	> 50	TOTAL
Calm	20.4												20.4
Variable													
35-36-01		0.6		0.2									0.8
02-03-04		0.8	0.2										1.0
05-06-07		1.2	0.4										1.6
08-09-10													
11-12-13													
14-15-16													
17-18-19		1.6	0.2										1.8
20-21-22		1.0	0.2										1.2
23-24-25		0.6											0.6
26-27-28		0.4	0.2										0.6
29-30-31		0.2	0.4										0.6
32-33-34													
TOTAL	20.4	6.4	1.6	0.2									28.6

MONTH : JULY

TIME : 0 UTC

MODEL : D

TABLE: Mean number of occurrences of concurrent wind direction (in 30 degree sector) and wind speed in specified ranges.

Wind Direction in tens of degree	WIND SPEED (KNOTS)												
	0	1 TO 5	6 TO 10	11 TO 15	16 TO 20	21 TO 25	26 TO 30	31 TO 35	36 TO 40	41 TO 45	46 TO 50	> 50	TOTAL
Calm	21.0												21.0
Variable													
35-36-01		0.6											0.6
02-03-04		1.0	1.0										2.0
05-06-07		1.2	0.8										2.0
08-09-10		0.6											0.6
11-12-13		0.2											0.2
14-15-16													
17-18-19		1.0											1.0
20-21-22		0.8											0.8
23-24-25		0.2											0.2
26-27-28		0.6											0.6
29-30-31		0.4	0.4										0.8
32-33-34		0.4											0.4
TOTAL	21.0	7.0	2.2										30.2

MONTH : JULY

TIME : 3 UTC

MODEL : D

TABLE: Mean number of occurrences of concurrent wind direction (in 30 degree sector) and wind speed in specified ranges.

Wind Direction in tens of degree	WIND SPEED (KNOTS)												
	0	1 TO 5	6 TO 10	11 TO 15	16 TO 20	21 TO 25	26 TO 30	31 TO 35	36 TO 40	41 TO 45	46 TO 50	> 50	TOTAL
Calm	11.0												11.0
Variable													
35-36-01		1.2	0.6										1.8
02-03-04		3.8	2.4										6.2
05-06-07		3.2	1.4	0.2									4.8
08-09-10		0.4											0.4
11-12-13		0.2											0.2
14-15-16		0.2											0.2
17-18-19		0.4	0.2										0.6
20-21-22		0.6											0.6
23-24-25		0.6											0.6
26-27-28		0.6	0.4										1.0
29-30-31		1.6	0.4										2.0
32-33-34		0.6	0.2										0.8
TOTAL	11.0	13.4	5.6	0.2									30.2

MONTH : JULY

TIME : 6 UTC

MODEL : D

TABLE: Mean number of occurrences of concurrent wind direction (in 30 degree sector) and wind speed in specified ranges.

Wind Direction in tens of degree	WIND SPEED (KNOTS)												
	0	1 TO 5	6 TO 10	11 TO 15	16 TO 20	21 TO 25	26 TO 30	31 TO 35	36 TO 40	41 TO 45	46 TO 50	> 50	TOTAL
Calm	3.6												3.6
Variable													
35-36-01		1.8	2.8	0.4									5.0
02-03-04		2.2	5.8	0.6									8.6
05-06-07		1.8	1.4	0.2									3.4
08-09-10													
11-12-13													
14-15-16		0.2											0.2
17-18-19			0.2										0.2
20-21-22													
23-24-25		0.8	0.2										1.0
26-27-28		1.4	0.8										2.2
29-30-31		1.0	1.0										2.0
32-33-34		2.4	1.8										4.2
TOTAL	3.6	11.6	14.0	1.2									30.4

MONTH : JULY

TIME : 9 UTC

MODEL : D

TABLE: Mean number of occurrences of concurrent wind direction (in 30 degree sector) and wind speed in specified ranges.

Wind Direction in tens of degree	WIND SPEED (KNOTS)												
	0	1 TO 5	6 TO 10	11 TO 15	16 TO 20	21 TO 25	26 TO 30	31 TO 35	36 TO 40	41 TO 45	46 TO 50	> 50	TOTAL
Calm	2.6												2.6
Variable													
35-36-01		0.8	0.8	0.2									1.8
02-03-04		1.2	4.4	1.0									6.6
05-06-07		1.6	1.6	0.2									3.4
08-09-10		0.4		0.2									0.6
11-12-13													
14-15-16		0.2											0.2
17-18-19		0.4	0.6		0.2								1.2
20-21-22		0.8	0.2										1.0
23-24-25		0.6	1.0										1.6
26-27-28		1.6	2.6										4.2
29-30-31		1.6	1.8										3.4
32-33-34		1.4	2.2										3.6
TOTAL	2.6	10.6	15.2	1.6	0.2								30.2

MONTH : JULY

TIME : 12 UTC

MODEL : D

TABLE: Mean number of occurrences of concurrent wind direction (in 30 degree sector) and wind speed in specified ranges.

Wind Direction in tens of degree	WIND SPEED (KNOTS)												
	0	1 TO 5	6 TO 10	11 TO 15	16 TO 20	21 TO 25	26 TO 30	31 TO 35	36 TO 40	41 TO 45	46 TO 50	> 50	TOTAL
Calm	7.0												7.0
Variable													
35-36-01		0.2	0.2										0.4
02-03-04		1.6	1.8	0.2									3.6
05-06-07		1.2	0.6	0.2									2.0
08-09-10		0.2	0.2										0.4
11-12-13		0.6	0.2										0.8
14-15-16		0.4											0.4
17-18-19		2.4	1.2	0.2	0.2								4.0
20-21-22		2.0	1.6										3.6
23-24-25		1.6	0.4										2.0
26-27-28		2.6	0.8										3.4
29-30-31		1.2											1.2
32-33-34		0.6	0.2										0.8
TOTAL	7.0	14.6	7.2	0.6	0.2								29.6

MONTH : JULY

TIME : 15 UTC

MODEL : D

TABLE: Mean number of occurrences of concurrent wind direction (in 30 degree sector) and wind speed in specified ranges.

Wind Direction in tens of degree	WIND SPEED (KNOTS)												
	0	1 TO 5	6 TO 10	11 TO 15	16 TO 20	21 TO 25	26 TO 30	31 TO 35	36 TO 40	41 TO 45	46 TO 50	> 50	TOTAL
Calm	18.6												18.6
Variable													
35-36-01		0.8											0.8
02-03-04		0.2	0.4										0.6
05-06-07		0.6	0.2										0.8
08-09-10		0.4											0.4
11-12-13		0.4											0.4
14-15-16		1.0											1.0
17-18-19		3.2	0.2										3.4
20-21-22		0.8	0.8										1.6
23-24-25		1.2	0.2										1.4
26-27-28		0.8											0.8
29-30-31		0.2	0.2										0.4
32-33-34		0.2											0.2
TOTAL	18.6	9.8	2.0										30.4

MONTH : JULY

TIME : 18 UTC

MODEL : D

TABLE: Mean number of occurrences of concurrent wind direction (in 30 degree sector) and wind speed in specified ranges.

Wind Direction in tens of degree	WIND SPEED (KNOTS)												
	0	1 TO 5	6 TO 10	11 TO 15	16 TO 20	21 TO 25	26 TO 30	31 TO 35	36 TO 40	41 TO 45	46 TO 50	> 50	TOTAL
Calm	21.4												21.4
Variable													
35-36-01		0.4											0.4
02-03-04		1.2	0.2										1.4
05-06-07		1.0											1.0
08-09-10		0.2											0.2
11-12-13													
14-15-16		0.2		0.2									0.4
17-18-19		3.2											3.2
20-21-22		1.6											1.6
23-24-25		0.2											0.2
26-27-28		0.2											0.2
29-30-31		0.4											0.4
32-33-34													
TOTAL	21.4	8.6	0.2	0.2									30.4

MONTH : JULY

TIME : 21 UTC

MODEL : D

TABLE: Mean number of occurrences of concurrent wind direction (in 30 degree sector) and wind speed in specified ranges.

Wind Direction in tens of degree	WIND SPEED (KNOTS)												
	0	1 TO 5	6 TO 10	11 TO 15	16 TO 20	21 TO 25	26 TO 30	31 TO 35	36 TO 40	41 TO 45	46 TO 50	> 50	TOTAL
Calm	23.8												23.8
Variable													
35-36-01		0.4											0.4
02-03-04		1.0	0.4										1.4
05-06-07		0.8	0.2										1.0
08-09-10													
11-12-13													
14-15-16		0.2											0.2
17-18-19		1.2											1.2
20-21-22		1.2											1.2
23-24-25		0.2											0.2
26-27-28		0.2											0.2
29-30-31													
32-33-34													
TOTAL	23.8	5.2	0.6										29.6

MONTH : AUGUST

TIME : 0 UTC

MODEL : D

TABLE: Mean number of occurrences of concurrent wind direction (in 30 degree sector) and wind speed in specified ranges.

Wind Direction in tens of degree	WIND SPEED (KNOTS)												
	0	1 TO 5	6 TO 10	11 TO 15	16 TO 20	21 TO 25	26 TO 30	31 TO 35	36 TO 40	41 TO 45	46 TO 50	> 50	TOTAL
Calm	22.4												22.4
Variable													
35-36-01		0.8											0.8
02-03-04		1.0	0.2										1.2
05-06-07		0.8											0.8
08-09-10		0.2	0.2										0.4
11-12-13													
14-15-16		0.2											0.2
17-18-19		2.6	0.2										2.8
20-21-22		1.0	0.2										1.2
23-24-25		0.4											0.4
26-27-28													
29-30-31													
32-33-34		0.2											0.2
TOTAL	22.4	7.2	0.8										30.4

MONTH : AUGUST

TIME : 3 UTC

MODEL : D

TABLE: Mean number of occurrences of concurrent wind direction (in 30 degree sector) and wind speed in specified ranges.

Wind Direction in tens of degree	WIND SPEED (KNOTS)												
	0	1 TO 5	6 TO 10	11 TO 15	16 TO 20	21 TO 25	26 TO 30	31 TO 35	36 TO 40	41 TO 45	46 TO 50	> 50	TOTAL
Calm	14.2												14.2
Variable													
35-36-01		0.8											0.8
02-03-04		2.2	1.0										3.2
05-06-07		2.4	1.8										4.2
08-09-10		0.4		0.2									0.6
11-12-13			0.4										0.4
14-15-16		0.2											0.2
17-18-19		1.6	0.2										1.8
20-21-22		0.6											0.6
23-24-25		1.6											1.6
26-27-28		1.2											1.2
29-30-31		0.4											0.4
32-33-34		1.2											1.2
TOTAL	14.2	12.6	3.4	0.2									30.4

MONTH : AUGUST

TIME : 6 UTC

MODEL : D

TABLE: Mean number of occurrences of concurrent wind direction (in 30 degree sector) and wind speed in specified ranges.

Wind Direction in tens of degree	WIND SPEED (KNOTS)												
	0	1 TO 5	6 TO 10	11 TO 15	16 TO 20	21 TO 25	26 TO 30	31 TO 35	36 TO 40	41 TO 45	46 TO 50	> 50	TOTAL
Calm	3.6												3.6
Variable													
35-36-01		1.4	1.8										3.2
02-03-04		1.0	4.2	0.2									5.4
05-06-07		2.2	2.4	0.2									4.8
08-09-10		0.2	0.2										0.4
11-12-13		0.4											0.4
14-15-16		0.4											0.4
17-18-19		0.4											0.4
20-21-22		1.2											1.2
23-24-25		0.4	0.4										0.8
26-27-28		1.6	1.6										3.2
29-30-31		2.8	1.8										4.6
32-33-34		1.2	0.8										2.0
TOTAL	3.6	13.2	13.2	0.4									30.4

MONTH : AUGUST

TIME : 9 UTC

MODEL : D

TABLE: Mean number of occurrences of concurrent wind direction (in 30 degree sector) and wind speed in specified ranges.

Wind Direction in tens of degree	WIND SPEED (KNOTS)												
	0	1 TO 5	6 TO 10	11 TO 15	16 TO 20	21 TO 25	26 TO 30	31 TO 35	36 TO 40	41 TO 45	46 TO 50	> 50	TOTAL
Calm	3.8												3.8
Variable													
35-36-01		1.2	2.0	0.4									3.6
02-03-04		0.6	3.4	0.2									4.2
05-06-07		0.4	1.4										1.8
08-09-10		0.6		0.2									0.8
11-12-13		0.4											0.4
14-15-16		0.2											0.2
17-18-19		0.2											0.2
20-21-22		1.6	0.6	0.4									2.6
23-24-25		0.6	0.8										1.4
26-27-28		1.6	2.6										4.2
29-30-31		1.8	2.8										4.6
32-33-34		1.0	1.6										2.6
TOTAL	3.8	10.2	15.2	1.2									30.4

MONTH : AUGUST

TIME : 12 UTC

MODEL : D

TABLE: Mean number of occurrences of concurrent wind direction (in 30 degree sector) and wind speed in specified ranges.

Wind Direction in tens of degree	WIND SPEED (KNOTS)												
	0	1 TO 5	6 TO 10	11 TO 15	16 TO 20	21 TO 25	26 TO 30	31 TO 35	36 TO 40	41 TO 45	46 TO 50	> 50	TOTAL
Calm	8.2												8.2
Variable													
35-36-01		1.6											1.6
02-03-04		1.6	1.2										2.8
05-06-07		1.2	0.6										1.8
08-09-10													
11-12-13		0.6	0.2										0.8
14-15-16		0.2	0.2										0.4
17-18-19		2.2	1.4	0.4									4.0
20-21-22		2.4	1.0										3.4
23-24-25		2.2	0.4										2.6
26-27-28		2.4	0.6										3.0
29-30-31		1.2	0.2										1.4
32-33-34		0.4	0.2										0.6
TOTAL	8.2	16.0	6.0	0.4									30.6

MONTH : AUGUST

TIME : 15 UTC

MODEL : D

TABLE: Mean number of occurrences of concurrent wind direction (in 30 degree sector) and wind speed in specified ranges.

Wind Direction in tens of degree	WIND SPEED (KNOTS)												
	0	1 TO 5	6 TO 10	11 TO 15	16 TO 20	21 TO 25	26 TO 30	31 TO 35	36 TO 40	41 TO 45	46 TO 50	> 50	TOTAL
Calm	17.6												17.6
Variable													
35-36-01		0.6											0.6
02-03-04		0.2											0.2
05-06-07		0.6	0.4										1.0
08-09-10													
11-12-13		0.2											0.2
14-15-16		1.0											1.0
17-18-19		4.0	0.6										4.6
20-21-22		1.6	0.6										2.2
23-24-25		1.0											1.0
26-27-28		1.0											1.0
29-30-31													
32-33-34		0.2											0.2
TOTAL	17.6	10.4	1.6										29.6

MONTH : AUGUST

TIME : 18 UTC

MODEL : D

TABLE: Mean number of occurrences of concurrent wind direction (in 30 degree sector) and wind speed in specified ranges.

Wind Direction in tens of degree	WIND SPEED (KNOTS)												
	0	1 TO 5	6 TO 10	11 TO 15	16 TO 20	21 TO 25	26 TO 30	31 TO 35	36 TO 40	41 TO 45	46 TO 50	> 50	TOTAL
Calm	20.6												20.6
Variable													
35-36-01		0.2											0.2
02-03-04		0.2	0.2										0.4
05-06-07		1.0											1.0
08-09-10													
11-12-13		0.2											0.2
14-15-16		1.0											1.0
17-18-19		3.4	0.2										3.6
20-21-22		0.8	0.2										1.0
23-24-25		0.8											0.8
26-27-28		0.4	0.2										0.6
29-30-31													
32-33-34		0.2											0.2
TOTAL	20.6	8.2	0.8										29.6

MONTH : AUGUST

TIME : 21 UTC

MODEL : D

TABLE: Mean number of occurrences of concurrent wind direction (in 30 degree sector) and wind speed in specified ranges.

Wind Direction in tens of degree	WIND SPEED (KNOTS)												
	0	1 TO 5	6 TO 10	11 TO 15	16 TO 20	21 TO 25	26 TO 30	31 TO 35	36 TO 40	41 TO 45	46 TO 50	> 50	TOTAL
Calm	25.0												25.0
Variable													
35-36-01													
02-03-04													
05-06-07		1.0	0.2										1.2
08-09-10													
11-12-13													
14-15-16		0.2											0.2
17-18-19		1.2	0.2										1.4
20-21-22		0.8											0.8
23-24-25		1.2											1.2
26-27-28													
29-30-31													
32-33-34													
TOTAL	25.0	4.4	0.4										29.8

MONTH : SEPTEMBER

TIME : 0 UTC

MODEL : D

TABLE: Mean number of occurrences of concurrent wind direction (in 30 degree sector) and wind speed in specified ranges.

Wind Direction in tens of degree	WIND SPEED (KNOTS)												
	0	1 TO 5	6 TO 10	11 TO 15	16 TO 20	21 TO 25	26 TO 30	31 TO 35	36 TO 40	41 TO 45	46 TO 50	> 50	TOTAL
Calm	23.6												23.6
Variable													
35-36-01		0.2											0.2
02-03-04		0.4	0.2										0.6
05-06-07		0.8	0.2	0.2									1.2
08-09-10		0.2											0.2
11-12-13													
14-15-16		0.4											0.4
17-18-19		1.2	0.2										1.4
20-21-22		1.0											1.0
23-24-25													
26-27-28		0.2											0.2
29-30-31													
32-33-34		0.2											0.2
TOTAL	23.6	4.6	0.6	0.2									29.0

MONTH : SEPTEMBER

TIME : 3 UTC

MODEL : D

TABLE: Mean number of occurrences of concurrent wind direction (in 30 degree sector) and wind speed in specified ranges.

Wind Direction in tens of degree	WIND SPEED (KNOTS)												
	0	1 TO 5	6 TO 10	11 TO 15	16 TO 20	21 TO 25	26 TO 30	31 TO 35	36 TO 40	41 TO 45	46 TO 50	> 50	TOTAL
Calm	15.4												15.4
Variable													
35-36-01		1.6	0.2										1.8
02-03-04		2.6	0.4	0.2									3.2
05-06-07		1.6	0.8										2.4
08-09-10		0.8	0.2										1.0
11-12-13													
14-15-16													
17-18-19		1.4	0.4										1.8
20-21-22		0.4	0.2										0.6
23-24-25		0.6	0.2										0.8
26-27-28		1.2	0.2										1.4
29-30-31		0.2											0.2
32-33-34		0.4	0.4										0.8
TOTAL	15.4	10.8	3.0	0.2									29.4

MONTH : SEPTEMBER

TIME : 6 UTC

MODEL : D

TABLE: Mean number of occurrences of concurrent wind direction (in 30 degree sector) and wind speed in specified ranges.

Wind Direction in tens of degree	WIND SPEED (KNOTS)												
	0	1 TO 5	6 TO 10	11 TO 15	16 TO 20	21 TO 25	26 TO 30	31 TO 35	36 TO 40	41 TO 45	46 TO 50	> 50	TOTAL
Calm	3.4												3.4
Variable													
35-36-01		2.0	2.4										4.4
02-03-04		2.6	1.6										4.2
05-06-07		1.8	1.2										3.0
08-09-10		0.4											0.4
11-12-13		0.8											0.8
14-15-16													
17-18-19		0.6											0.6
20-21-22		0.2											0.2
23-24-25		1.2	0.2	0.2									1.6
26-27-28		2.2	1.6										3.8
29-30-31		1.6	1.0	0.2									2.8
32-33-34		2.8	1.4										4.2
TOTAL	3.4	16.2	9.4	0.4									29.4

MONTH : SEPTEMBER

TIME : 9 UTC

MODEL : D

TABLE: Mean number of occurrences of concurrent wind direction (in 30 degree sector) and wind speed in specified ranges.

Wind Direction in tens of degree	WIND SPEED (KNOTS)												
	0	1 TO 5	6 TO 10	11 TO 15	16 TO 20	21 TO 25	26 TO 30	31 TO 35	36 TO 40	41 TO 45	46 TO 50	> 50	TOTAL
Calm	4.2												4.2
Variable													
35-36-01		0.8	1.6										2.4
02-03-04		1.0	1.4	0.2									2.6
05-06-07		0.6	1.2										1.8
08-09-10		0.4	0.2										0.6
11-12-13													
14-15-16			0.2										0.2
17-18-19		0.6	0.4										1.0
20-21-22		0.8	1.0										1.8
23-24-25		1.8	1.2										3.0
26-27-28		2.4	2.6	0.2									5.2
29-30-31		1.4	1.8										3.2
32-33-34		2.4	1.6										4.0
TOTAL	4.2	12.2	13.2	0.4									30.0

MONTH : SEPTEMBER

TIME : 12 UTC

MODEL : D

TABLE: Mean number of occurrences of concurrent wind direction (in 30 degree sector) and wind speed in specified ranges.

Wind Direction in tens of degree	WIND SPEED (KNOTS)												
	0	1 TO 5	6 TO 10	11 TO 15	16 TO 20	21 TO 25	26 TO 30	31 TO 35	36 TO 40	41 TO 45	46 TO 50	> 50	TOTAL
Calm	15.0												15.0
Variable													
35-36-01		0.4	0.2										0.6
02-03-04		0.6	0.2										0.8
05-06-07		0.8											0.8
08-09-10		0.6	0.2										0.8
11-12-13			0.2										0.2
14-15-16		0.6	0.2										0.8
17-18-19		2.0	1.0										3.0
20-21-22		0.8											0.8
23-24-25		1.0											1.0
26-27-28		3.4	0.4										3.8
29-30-31		0.8	0.2										1.0
32-33-34		1.0											1.0
TOTAL	15.0	12.0	2.6										29.6

MONTH : SEPTEMBER

TIME : 15 UTC

MODEL : D

TABLE: Mean number of occurrences of concurrent wind direction (in 30 degree sector) and wind speed in specified ranges.

Wind Direction in tens of degree	WIND SPEED (KNOTS)												
	0	1 TO 5	6 TO 10	11 TO 15	16 TO 20	21 TO 25	26 TO 30	31 TO 35	36 TO 40	41 TO 45	46 TO 50	> 50	TOTAL
Calm	22.8												22.8
Variable													
35-36-01													
02-03-04		0.6											0.6
05-06-07		0.6											0.6
08-09-10													
11-12-13		0.8											0.8
14-15-16		0.4											0.4
17-18-19		2.6											2.6
20-21-22		1.4	0.2		0.2								1.8
23-24-25			0.2										0.2
26-27-28													
29-30-31													
32-33-34													
TOTAL	22.8	6.4	0.4		0.2								29.8

MONTH : SEPTEMBER

TIME : 18 UTC

MODEL : D

TABLE: Mean number of occurrences of concurrent wind direction (in 30 degree sector) and wind speed in specified ranges.

Wind Direction in tens of degree	WIND SPEED (KNOTS)												
	0	1 TO 5	6 TO 10	11 TO 15	16 TO 20	21 TO 25	26 TO 30	31 TO 35	36 TO 40	41 TO 45	46 TO 50	> 50	TOTAL
Calm	23.6												23.6
Variable													
35-36-01		0.2											0.2
02-03-04		0.4											0.4
05-06-07		0.6											0.6
08-09-10													
11-12-13													
14-15-16		0.2											0.2
17-18-19		2.2											2.2
20-21-22		1.4	0.2										1.6
23-24-25		0.6											0.6
26-27-28													
29-30-31													
32-33-34		0.2											0.2
TOTAL	23.6	5.8	0.2										29.6

MONTH : SEPTEMBER

TIME : 21 UTC

MODEL : D

TABLE: Mean number of occurrences of concurrent wind direction (in 30 degree sector) and wind speed in specified ranges.

Wind Direction in tens of degree	WIND SPEED (KNOTS)												
	0	1 TO 5	6 TO 10	11 TO 15	16 TO 20	21 TO 25	26 TO 30	31 TO 35	36 TO 40	41 TO 45	46 TO 50	> 50	TOTAL
Calm	25.6												25.6
Variable													
35-36-01		0.4											0.4
02-03-04													
05-06-07		0.8											0.8
08-09-10													
11-12-13													
14-15-16		0.2											0.2
17-18-19		1.0	0.2										1.2
20-21-22		0.4											0.4
23-24-25		0.6											0.6
26-27-28													
29-30-31													
32-33-34		0.2											0.2
TOTAL	25.6	3.6	0.2										29.4

MONTH : OCTOBER

TIME : 0 UTC

MODEL : D

TABLE: Mean number of occurrences of concurrent wind direction (in 30 degree sector) and wind speed in specified ranges.

Wind Direction in tens of degree	WIND SPEED (KNOTS)												
	0	1 TO 5	6 TO 10	11 TO 15	16 TO 20	21 TO 25	26 TO 30	31 TO 35	36 TO 40	41 TO 45	46 TO 50	> 50	TOTAL
Calm	26.6												26.6
Variable													
35-36-01		0.6											0.6
02-03-04		0.6	0.2										0.8
05-06-07		0.2	0.2										0.4
08-09-10													
11-12-13													
14-15-16													
17-18-19		0.4											0.4
20-21-22		1.0											1.0
23-24-25													
26-27-28		0.2											0.2
29-30-31													
32-33-34		0.2											0.2
TOTAL	26.6	3.2	0.4										30.2

MONTH : OCTOBER

TIME : 3 UTC

MODEL : D

TABLE: Mean number of occurrences of concurrent wind direction (in 30 degree sector) and wind speed in specified ranges.

Wind Direction in tens of degree	WIND SPEED (KNOTS)												
	0	1 TO 5	6 TO 10	11 TO 15	16 TO 20	21 TO 25	26 TO 30	31 TO 35	36 TO 40	41 TO 45	46 TO 50	> 50	TOTAL
Calm	16.2												16.2
Variable													
35-36-01		2.6	0.4										3.0
02-03-04		2.6	1.8										4.4
05-06-07		2.2	1.0										3.2
08-09-10													
11-12-13													
14-15-16													
17-18-19		0.2											0.2
20-21-22		1.0											1.0
23-24-25		1.0											1.0
26-27-28		0.2	0.2										0.4
29-30-31		0.2											0.2
32-33-34		0.6											0.6
TOTAL	16.2	10.6	3.4										30.2

MONTH : OCTOBER

TIME : 6 UTC

MODEL : D

TABLE: Mean number of occurrences of concurrent wind direction (in 30 degree sector) and wind speed in specified ranges.

Wind Direction in tens of degree	WIND SPEED (KNOTS)												
	0	1 TO 5	6 TO 10	11 TO 15	16 TO 20	21 TO 25	26 TO 30	31 TO 35	36 TO 40	41 TO 45	46 TO 50	> 50	TOTAL
Calm	3.0												3.0
Variable													
35-36-01		2.6	5.8										8.4
02-03-04		3.6	5.6	0.2									9.4
05-06-07		2.0	1.6										3.6
08-09-10		0.2	0.2										0.4
11-12-13													
14-15-16													
17-18-19		0.2	0.2										0.4
20-21-22		0.2	0.2										0.4
23-24-25		0.2											0.2
26-27-28		1.0	1.0										2.0
29-30-31		0.4	0.2										0.6
32-33-34		1.6	0.6										2.2
TOTAL	3.0	12.0	15.4	0.2									30.6

MONTH : OCTOBER

TIME : 9 UTC

MODEL : D

TABLE: Mean number of occurrences of concurrent wind direction (in 30 degree sector) and wind speed in specified ranges.

Wind Direction in tens of degree	WIND SPEED (KNOTS)												
	0	1 TO 5	6 TO 10	11 TO 15	16 TO 20	21 TO 25	26 TO 30	31 TO 35	36 TO 40	41 TO 45	46 TO 50	> 50	TOTAL
Calm	2.6												2.6
Variable													
35-36-01		2.8	4.4										7.2
02-03-04		2.2	5.6	0.2									8.0
05-06-07		1.2	0.8	0.2									2.2
08-09-10													
11-12-13		0.4											0.4
14-15-16			0.2										0.2
17-18-19		0.4		0.2									0.6
20-21-22		0.2	0.2										0.4
23-24-25		0.6	0.4										1.0
26-27-28		2.0	1.0										3.0
29-30-31		1.8	0.4										2.2
32-33-34		2.4	0.6										3.0
TOTAL	2.6	14.0	13.6	0.6									30.8

MONTH : OCTOBER

TIME : 12 UTC

MODEL : D

TABLE: Mean number of occurrences of concurrent wind direction (in 30 degree sector) and wind speed in specified ranges.

Wind Direction in tens of degree	WIND SPEED (KNOTS)												
	0	1 TO 5	6 TO 10	11 TO 15	16 TO 20	21 TO 25	26 TO 30	31 TO 35	36 TO 40	41 TO 45	46 TO 50	> 50	TOTAL
Calm	15.2												15.2
Variable													
35-36-01		2.8	0.2										3.0
02-03-04		2.0	0.4										2.4
05-06-07		2.4	0.2	0.2									2.8
08-09-10		0.2	0.2										0.4
11-12-13		0.2											0.2
14-15-16		0.4	0.2										0.6
17-18-19		1.0	0.2										1.2
20-21-22		1.0	0.4										1.4
23-24-25		0.8											0.8
26-27-28		1.0											1.0
29-30-31		0.6											0.6
32-33-34		0.8											0.8
TOTAL	15.2	13.2	1.8	0.2									30.4

MONTH : OCTOBER

TIME : 15 UTC

MODEL : D

TABLE: Mean number of occurrences of concurrent wind direction (in 30 degree sector) and wind speed in specified ranges.

Wind Direction in tens of degree	WIND SPEED (KNOTS)												
	0	1 TO 5	6 TO 10	11 TO 15	16 TO 20	21 TO 25	26 TO 30	31 TO 35	36 TO 40	41 TO 45	46 TO 50	> 50	TOTAL
Calm	21.8												21.8
Variable													
35-36-01		0.2	0.2										0.4
02-03-04		0.2											0.2
05-06-07		1.0	0.4										1.4
08-09-10		0.2											0.2
11-12-13		0.2											0.2
14-15-16		0.2											0.2
17-18-19		3.6	0.6										4.2
20-21-22		1.4											1.4
23-24-25		0.6											0.6
26-27-28		0.2											0.2
29-30-31													
32-33-34													
TOTAL	21.8	7.8	1.2										30.8

MONTH : OCTOBER

TIME : 18 UTC

MODEL : D

TABLE: Mean number of occurrences of concurrent wind direction (in 30 degree sector) and wind speed in specified ranges.

Wind Direction in tens of degree	WIND SPEED (KNOTS)												
	0	1 TO 5	6 TO 10	11 TO 15	16 TO 20	21 TO 25	26 TO 30	31 TO 35	36 TO 40	41 TO 45	46 TO 50	> 50	TOTAL
Calm	24.8												24.8
Variable													
35-36-01		0.2											0.2
02-03-04		0.4	0.2										0.6
05-06-07		0.4	0.4										0.8
08-09-10		0.6											0.6
11-12-13													
14-15-16		0.2											0.2
17-18-19		1.6											1.6
20-21-22		1.2	0.2										1.4
23-24-25		0.2											0.2
26-27-28													
29-30-31													
32-33-34													
TOTAL	24.8	4.8	0.8										30.4

MONTH : OCTOBER

TIME : 21 UTC

MODEL : D

TABLE: Mean number of occurrences of concurrent wind direction (in 30 degree sector) and wind speed in specified ranges.

Wind Direction in tens of degree	WIND SPEED (KNOTS)												
	0	1 TO 5	6 TO 10	11 TO 15	16 TO 20	21 TO 25	26 TO 30	31 TO 35	36 TO 40	41 TO 45	46 TO 50	> 50	TOTAL
Calm	26.8												26.8
Variable													
35-36-01		0.2											0.2
02-03-04		1.0											1.0
05-06-07		1.0	0.2										1.2
08-09-10													
11-12-13													
14-15-16		0.2											0.2
17-18-19		0.6											0.6
20-21-22		0.4											0.4
23-24-25													
26-27-28		0.2											0.2
29-30-31													
32-33-34													
TOTAL	26.8	3.6	0.2										30.6

MONTH : NOVEMBER

TIME : 0 UTC

MODEL : D

TABLE: Mean number of occurrences of concurrent wind direction (in 30 degree sector) and wind speed in specified ranges.

Wind Direction in tens of degree	WIND SPEED (KNOTS)												
	0	1 TO 5	6 TO 10	11 TO 15	16 TO 20	21 TO 25	26 TO 30	31 TO 35	36 TO 40	41 TO 45	46 TO 50	> 50	TOTAL
Calm	25.6												25.6
Variable													
35-36-01		0.6											0.6
02-03-04		0.4	0.2										0.6
05-06-07		0.4											0.4
08-09-10													
11-12-13													
14-15-16													
17-18-19		0.8											0.8
20-21-22		0.4											0.4
23-24-25													
26-27-28													
29-30-31													
32-33-34		0.2											0.2
TOTAL	25.6	2.8	0.2										28.6

MONTH : NOVEMBER

TIME : 3 UTC

MODEL : D

TABLE: Mean number of occurrences of concurrent wind direction (in 30 degree sector) and wind speed in specified ranges.

Wind Direction in tens of degree	WIND SPEED (KNOTS)												
	0	1 TO 5	6 TO 10	11 TO 15	16 TO 20	21 TO 25	26 TO 30	31 TO 35	36 TO 40	41 TO 45	46 TO 50	> 50	TOTAL
Calm	18.0												18.0
Variable													
35-36-01		2.2	0.2										2.4
02-03-04		3.0	1.2										4.2
05-06-07		0.8	1.4										2.2
08-09-10		0.2											0.2
11-12-13													
14-15-16		0.4											0.4
17-18-19		0.8											0.8
20-21-22		0.4											0.4
23-24-25		0.4											0.4
26-27-28		0.2											0.2
29-30-31													
32-33-34		0.6											0.6
TOTAL	18.0	9.0	2.8										29.8

MONTH : NOVEMBER

TIME : 6 UTC

MODEL : D

TABLE: Mean number of occurrences of concurrent wind direction (in 30 degree sector) and wind speed in specified ranges.

Wind Direction in tens of degree	WIND SPEED (KNOTS)												
	0	1 TO 5	6 TO 10	11 TO 15	16 TO 20	21 TO 25	26 TO 30	31 TO 35	36 TO 40	41 TO 45	46 TO 50	> 50	TOTAL
Calm	2.4												2.4
Variable													
35-36-01		2.0	3.2										5.2
02-03-04		3.8	6.2										10.0
05-06-07		2.8	1.4										4.2
08-09-10		0.4	0.2										0.6
11-12-13			0.4										0.4
14-15-16													
17-18-19													
20-21-22													
23-24-25		0.4	0.2										0.6
26-27-28		1.0	0.2										1.2
29-30-31		1.4	0.2										1.6
32-33-34		3.4	0.4										3.8
TOTAL	2.4	15.2	12.4										30.0

MONTH : NOVEMBER

TIME : 9 UTC

MODEL : D

TABLE: Mean number of occurrences of concurrent wind direction (in 30 degree sector) and wind speed in specified ranges.

Wind Direction in tens of degree	WIND SPEED (KNOTS)												
	0	1 TO 5	6 TO 10	11 TO 15	16 TO 20	21 TO 25	26 TO 30	31 TO 35	36 TO 40	41 TO 45	46 TO 50	> 50	TOTAL
Calm	2.2												2.2
Variable													
35-36-01		2.4	4.0										6.4
02-03-04		3.6	7.2	0.2									11.0
05-06-07		1.6	1.4	0.2									3.2
08-09-10		0.4											0.4
11-12-13													
14-15-16		0.2											0.2
17-18-19													
20-21-22													
23-24-25		1.2											1.2
26-27-28		0.8	0.4										1.2
29-30-31		1.8											1.8
32-33-34		1.0	0.6										1.6
TOTAL	2.2	13.0	13.6	0.4									29.2

MONTH : NOVEMBER

TIME : 12 UTC

MODEL : D

TABLE: Mean number of occurrences of concurrent wind direction (in 30 degree sector) and wind speed in specified ranges.

Wind Direction in tens of degree	WIND SPEED (KNOTS)												
	0	1 TO 5	6 TO 10	11 TO 15	16 TO 20	21 TO 25	26 TO 30	31 TO 35	36 TO 40	41 TO 45	46 TO 50	> 50	TOTAL
Calm	20.6												20.6
Variable													
35-36-01		0.8											0.8
02-03-04		3.0	0.2										3.2
05-06-07		2.6											2.6
08-09-10		0.2											0.2
11-12-13		0.2											0.2
14-15-16		0.8											0.8
17-18-19		1.0											1.0
20-21-22													
23-24-25		0.2											0.2
26-27-28		0.2											0.2
29-30-31		0.2											0.2
32-33-34													
TOTAL	20.6	9.2	0.2										30.0

MONTH : NOVEMBER

TIME : 15 UTC

MODEL : D

TABLE: Mean number of occurrences of concurrent wind direction (in 30 degree sector) and wind speed in specified ranges.

Wind Direction in tens of degree	WIND SPEED (KNOTS)												
	0	1 TO 5	6 TO 10	11 TO 15	16 TO 20	21 TO 25	26 TO 30	31 TO 35	36 TO 40	41 TO 45	46 TO 50	> 50	TOTAL
Calm	24.0												24.0
Variable													
35-36-01		0.4											0.4
02-03-04													
05-06-07		0.8											0.8
08-09-10													
11-12-13		0.2											0.2
14-15-16		0.8											0.8
17-18-19		1.6											1.6
20-21-22		0.8											0.8
23-24-25													
26-27-28													
29-30-31													
32-33-34													
TOTAL	24.0	4.6											28.6

MONTH : NOVEMBER

TIME : 18 UTC

MODEL : D

TABLE: Mean number of occurrences of concurrent wind direction (in 30 degree sector) and wind speed in specified ranges.

Wind Direction in tens of degree	WIND SPEED (KNOTS)												
	0	1 TO 5	6 TO 10	11 TO 15	16 TO 20	21 TO 25	26 TO 30	31 TO 35	36 TO 40	41 TO 45	46 TO 50	> 50	TOTAL
Calm	26.0												26.0
Variable													
35-36-01		0.2											0.2
02-03-04		0.4											0.4
05-06-07		0.4											0.4
08-09-10													
11-12-13		0.4											0.4
14-15-16		0.4											0.4
17-18-19		1.6											1.6
20-21-22													
23-24-25													
26-27-28													
29-30-31													
32-33-34													
TOTAL	26.0	3.4											29.4

MONTH : NOVEMBER

TIME : 21 UTC

MODEL : D

TABLE: Mean number of occurrences of concurrent wind direction (in 30 degree sector) and wind speed in specified ranges.

Wind Direction in tens of degree	WIND SPEED (KNOTS)												
	0	1 TO 5	6 TO 10	11 TO 15	16 TO 20	21 TO 25	26 TO 30	31 TO 35	36 TO 40	41 TO 45	46 TO 50	> 50	TOTAL
Calm	27.4												27.4
Variable													
35-36-01		0.2											0.2
02-03-04		0.4											0.4
05-06-07		0.2											0.2
08-09-10													
11-12-13													
14-15-16		0.4											0.4
17-18-19		0.4											0.4
20-21-22													
23-24-25													
26-27-28													
29-30-31													
32-33-34													
TOTAL	27.4	1.6											29.0

MONTH : DECEMBER

TIME : 0 UTC

MODEL : D

TABLE: Mean number of occurrences of concurrent wind direction (in 30 degree sector) and wind speed in specified ranges.

Wind Direction in tens of degree	WIND SPEED (KNOTS)												
	0	1 TO 5	6 TO 10	11 TO 15	16 TO 20	21 TO 25	26 TO 30	31 TO 35	36 TO 40	41 TO 45	46 TO 50	> 50	TOTAL
Calm	27.8												27.8
Variable													
35-36-01		0.2											0.2
02-03-04		0.2	0.2										0.4
05-06-07													
08-09-10													
11-12-13		0.2											0.2
14-15-16													
17-18-19		1.4											1.4
20-21-22		0.4											0.4
23-24-25		0.2											0.2
26-27-28													
29-30-31													
32-33-34													
TOTAL	27.8	2.6	0.2										30.6

MONTH : DECEMBER

TIME : 3 UTC

MODEL : D

TABLE: Mean number of occurrences of concurrent wind direction (in 30 degree sector) and wind speed in specified ranges.

Wind Direction in tens of degree	WIND SPEED (KNOTS)												
	0	1 TO 5	6 TO 10	11 TO 15	16 TO 20	21 TO 25	26 TO 30	31 TO 35	36 TO 40	41 TO 45	46 TO 50	> 50	TOTAL
Calm	23.8												23.8
Variable													
35-36-01		1.4											1.4
02-03-04		2.0	0.2										2.2
05-06-07		0.2	0.2										0.4
08-09-10		0.4											0.4
11-12-13													
14-15-16		0.2											0.2
17-18-19		0.6											0.6
20-21-22		0.6											0.6
23-24-25		0.4											0.4
26-27-28		0.2											0.2
29-30-31													
32-33-34		0.4											0.4
TOTAL	23.8	6.4	0.4										30.6

MONTH : DECEMBER

TIME : 6 UTC

MODEL : D

TABLE: Mean number of occurrences of concurrent wind direction (in 30 degree sector) and wind speed in specified ranges.

Wind Direction in tens of degree	WIND SPEED (KNOTS)												
	0	1 TO 5	6 TO 10	11 TO 15	16 TO 20	21 TO 25	26 TO 30	31 TO 35	36 TO 40	41 TO 45	46 TO 50	> 50	TOTAL
Calm	4.6												4.6
Variable													
35-36-01		3.2	5.0										8.2
02-03-04		4.2	3.6	0.2									8.0
05-06-07		1.8	1.0										2.8
08-09-10		0.2											0.2
11-12-13		0.2											0.2
14-15-16													
17-18-19													
20-21-22		0.2											0.2
23-24-25		0.2											0.2
26-27-28		1.0	0.4										1.4
29-30-31		1.0											1.0
32-33-34		2.8	0.4										3.2
TOTAL	4.6	14.8	10.4	0.2									30.0

MONTH : DECEMBER

TIME : 9 UTC

MODEL : D

TABLE: Mean number of occurrences of concurrent wind direction (in 30 degree sector) and wind speed in specified ranges.

Wind Direction in tens of degree	WIND SPEED (KNOTS)												
	0	1 TO 5	6 TO 10	11 TO 15	16 TO 20	21 TO 25	26 TO 30	31 TO 35	36 TO 40	41 TO 45	46 TO 50	> 50	TOTAL
Calm	1.6												1.6
Variable													
35-36-01		2.0	3.2	0.4									5.6
02-03-04		4.6	9.4										14.0
05-06-07		1.6	1.6										3.2
08-09-10													
11-12-13		0.4											0.4
14-15-16													
17-18-19		0.2											0.2
20-21-22													
23-24-25		0.4											0.4
26-27-28		2.2	0.4										2.6
29-30-31		1.6	0.2										1.8
32-33-34		0.8	0.2										1.0
TOTAL	1.6	13.8	15.0	0.4									30.8

MONTH : DECEMBER

TIME : 12 UTC

MODEL : D

TABLE: Mean number of occurrences of concurrent wind direction (in 30 degree sector) and wind speed in specified ranges.

Wind Direction in tens of degree	WIND SPEED (KNOTS)												
	0	1 TO 5	6 TO 10	11 TO 15	16 TO 20	21 TO 25	26 TO 30	31 TO 35	36 TO 40	41 TO 45	46 TO 50	> 50	TOTAL
Calm	22.4												22.4
Variable													
35-36-01		1.4											1.4
02-03-04		1.0	0.2										1.2
05-06-07		0.2											0.2
08-09-10		1.0											1.0
11-12-13		0.2											0.2
14-15-16		0.6											0.6
17-18-19		2.2											2.2
20-21-22		0.4											0.4
23-24-25		0.6											0.6
26-27-28		0.2											0.2
29-30-31													
32-33-34													
TOTAL	22.4	7.8	0.2										30.4

MONTH : DECEMBER

TIME : 15 UTC

MODEL : D

TABLE: Mean number of occurrences of concurrent wind direction (in 30 degree sector) and wind speed in specified ranges.

Wind Direction in tens of degree	WIND SPEED (KNOTS)												
	0	1 TO 5	6 TO 10	11 TO 15	16 TO 20	21 TO 25	26 TO 30	31 TO 35	36 TO 40	41 TO 45	46 TO 50	> 50	TOTAL
Calm	23.4												23.4
Variable													
35-36-01			0.2										0.2
02-03-04													
05-06-07													
08-09-10		0.2											0.2
11-12-13		0.2											0.2
14-15-16		0.6											0.6
17-18-19		3.8											3.8
20-21-22		1.4											1.4
23-24-25		0.6											0.6
26-27-28		0.2											0.2
29-30-31													
32-33-34													
TOTAL	23.4	7.0	0.2										30.6

MONTH : DECEMBER

TIME : 18 UTC

MODEL : D

TABLE: Mean number of occurrences of concurrent wind direction (in 30 degree sector) and wind speed in specified ranges.

Wind Direction in tens of degree	WIND SPEED (KNOTS)												
	0	1 TO 5	6 TO 10	11 TO 15	16 TO 20	21 TO 25	26 TO 30	31 TO 35	36 TO 40	41 TO 45	46 TO 50	> 50	TOTAL
Calm	26.4												26.4
Variable													
35-36-01		0.6											0.6
02-03-04													
05-06-07		0.6											0.6
08-09-10													
11-12-13													
14-15-16													
17-18-19		2.2											2.2
20-21-22		0.4											0.4
23-24-25													
26-27-28		0.2											0.2
29-30-31													
32-33-34		0.4											0.4
TOTAL	26.4	4.4											30.8

MONTH : DECEMBER

TIME : 21 UTC

MODEL : D

TABLE: Mean number of occurrences of concurrent wind direction (in 30 degree sector) and wind speed in specified ranges.

Wind Direction in tens of degree	WIND SPEED (KNOTS)												
	0	1 TO 5	6 TO 10	11 TO 15	16 TO 20	21 TO 25	26 TO 30	31 TO 35	36 TO 40	41 TO 45	46 TO 50	> 50	TOTAL
Calm	28.2												28.2
Variable													
35-36-01		0.4											0.4
02-03-04		0.2											0.2
05-06-07													
08-09-10													
11-12-13		0.2											0.2
14-15-16													
17-18-19		0.8											0.8
20-21-22		0.2											0.2
23-24-25													
26-27-28		0.4											0.4
29-30-31													
32-33-34		0.2	0.2										0.4
TOTAL	28.2	2.4	0.2										30.8

MONTH : JANUARY

MODEL : E

TABLE: Mean number of occurrence of screen temperature (in ranges of 5 degrees) at specified time.

Time UTC	TEMPERATURE (°C)												
	-10 to -5	-5 to 0	0 to 5	5 to 10	10 to 15	15 to 20	20 to 25	25 to 30	30 to 35	35 to 40	40 to 45	45 to 50	Total
0				0.4	25.0	5.0							30.4
1				0.8	25.2	4.2							30.2
2					22.2	8.4							30.6
3					8.2	21.6	0.2						30.0
4					2.6	19.2	8.6						30.4
5					0.8	9.6	20.2	0.2					30.8
6					0.2	5.2	20.6	4.4					30.4
7						3.2	17.6	9.4					30.2
8						1.4	15.8	13.6					30.8
9						1.4	13.4	15.4					30.2
10						2.0	16.0	12.8					30.8
11						3.0	20.4	6.8					30.2
12						11.0	18.8	0.2					30.0
13					0.6	21.4	8.4						30.4
14					1.6	25.6	3.6						30.8
15					3.6	25.6	1.2						30.4
16					5.0	24.6	0.6						30.2
17					8.2	21.6	0.2						30.0
18					12.0	17.8	0.2						30.0
19					15.2	15.6							30.8
20					18.6	12.0							30.6
21					19.6	10.6							30.2
22					21.2	9.0							30.2
23					23.8	6.6							30.4
Total				1.2	213.6	285.6	165.8	62.8					729.0

MONTH : FEBRUARY

MODEL : E

TABLE: Mean number of occurrence of screen temperature (in ranges of 5 degrees) at specified time.

Time UTC	TEMPERATURE (°C)												Total
	-10 to -5	-5 to 0	0 to 5	5 to 10	10 to 15	15 to 20	20 to 25	25 to 30	30 to 35	35 to 40	40 to 45	45 to 50	
0					12.0	9.4	0.2						21.6
1					12.6	9.4	0.2						22.2
2					7.8	13.6	0.6						22.0
3					0.8	14.8	6.4						22.0
4					0.4	4.4	17.0	0.6					22.4
5					0.6	1.0	14.6	6.2					22.4
6						1.2	9.0	12.0					22.2
7						1.0	6.2	15.2					22.4
8						1.0	3.6	16.0	1.4				22.0
9						0.8	3.0	17.4	1.2				22.4
10						1.0	3.8	16.0	1.6				22.4
11						0.4	6.0	15.6	0.2				22.2
12						1.2	13.8	7.4					22.4
13						5.8	14.4	2.0					22.2
14						11.0	11.0	0.2					22.2
15					0.2	13.8	8.4						22.4
16					1.0	15.0	5.4						21.4
17					1.6	16.0	4.4						22.0
18					2.4	16.4	2.8						21.6
19					3.6	16.2	2.4						22.2
20					4.2	16.0	2.0						22.2
21					5.8	14.4	2.0						22.2
22					7.8	13.0	1.0						21.8
23					9.2	12.4	0.4						22.0
Total					70.0	209.2	138.6	108.6	4.4				530.8

MONTH : MARCH

MODEL : E

TABLE: Mean number of occurrence of screen temperature (in ranges of 5 degrees) at specified time.

Time UTC	TEMPERATURE (°C)												Total
	-10 to -5	-5 to 0	0 to 5	5 to 10	10 to 15	15 to 20	20 to 25	25 to 30	30 to 35	35 to 40	40 to 45	45 to 50	
0					4.6	19.4	6.4						30.4
1					4.6	18.4	7.4						30.4
2					1.8	11.4	16.8	0.4					30.4
3					0.2	4.2	22.0	4.2	0.2				30.8
4						2.0	14.0	14.6	0.2				30.8
5						0.4	7.6	22.0	0.8				30.8
6							5.6	21.4	4.0				31.0
7						0.4	3.4	17.6	8.8				30.2
8							2.6	15.4	12.4	0.2			30.6
9						0.4	2.4	13.2	14.4				30.4
10							2.0	14.8	14.0				30.8
11							3.8	18.6	8.4				30.8
12						0.2	6.4	22.2	2.0				30.8
13						1.8	14.0	14.4	0.4				30.6
14						3.0	19.2	8.6					30.8
15						5.6	21.6	3.6					30.8
16					0.2	6.6	22.4	1.4					30.6
17					0.2	9.4	19.8	1.2					30.6
18					0.4	12.2	16.8	1.0					30.4
19					0.8	13.8	15.4	0.8					30.8
20					1.0	16.2	13.2	0.2					30.6
21					1.0	17.6	12.2						30.8
22					1.8	18.6	10.0						30.4
23					2.8	19.0	8.4						30.2
Total					19.4	180.6	273.4	195.6	65.6	0.2			734.8

MONTH : APRIL

MODEL : E

TABLE: Mean number of occurrence of screen temperature (in ranges of 5 degrees) at specified time.

Time UTC	TEMPERATURE (°C)												Total
	-10 to -5	-5 to 0	0 to 5	5 to 10	10 to 15	15 to 20	20 to 25	25 to 30	30 to 35	35 to 40	40 to 45	45 to 50	
0						3.6	25.2	0.4					29.2
1						0.8	25.4	2.8					29.0
2						0.2	19.6	9.2	0.2				29.2
3						0.2	11.0	16.0	1.8				29.0
4							7.2	17.4	4.2	0.4			29.2
5							3.8	15.2	9.0	1.0			29.0
6							3.2	12.0	12.6	1.6			29.4
7							3.0	9.4	13.8	3.0			29.2
8							2.4	9.4	14.0	4.0			29.8
9							2.2	8.8	15.0	3.6			29.6
10							3.2	8.0	15.0	3.4			29.6
11							3.0	9.8	13.4	2.6			28.8
12							4.2	13.2	11.4	0.6			29.4
13							5.4	19.6	4.2				29.2
14							7.2	19.8	1.4				28.4
15							12.4	16.2	0.2				28.8
16						0.2	15.8	12.8					28.8
17						0.2	20.6	8.6					29.4
18						0.2	21.6	7.2					29.0
19						0.6	22.4	5.6					28.6
20						0.8	23.4	4.4					28.6
21						0.8	25.4	2.8					29.0
22						1.4	25.4	1.6					28.4
23						2.4	25.8	0.8					29.0
Total						11.4	318.8	231.0	116.2	20.2			697.6

MONTH : MAY

MODEL : E

TABLE: Mean number of occurrence of screen temperature (in ranges of 5 degrees) at specified time.

Time UTC	TEMPERATURE (°C)												
	-10 to -5	-5 to 0	0 to 5	5 to 10	10 to 15	15 to 20	20 to 25	25 to 30	30 to 35	35 to 40	40 to 45	45 to 50	Total
0							17.4	13.2					30.6
1							12.0	18.4					30.4
2							7.2	22.4	0.2	0.2			30.0
3							4.0	22.6	4.2				30.8
4							2.2	20.0	8.4				30.6
5							1.2	16.6	12.4				30.2
6							1.4	13.2	15.6	0.2			30.4
7							1.8	10.6	16.2	1.4			30.0
8							1.6	7.8	18.6	1.6			29.6
9							1.2	8.0	19.4	1.8			30.4
10							0.8	9.0	18.6	1.6			30.0
11							0.6	11.8	17.2	0.6			30.2
12							1.6	13.8	14.2				29.6
13							2.2	20.2	8.4				30.8
14							2.6	23.8	4.0				30.4
15							3.8	25.4	1.2				30.4
16							4.6	25.0	0.6				30.2
17							6.0	24.2					30.2
18							7.4	23.0					30.4
19							8.6	22.2					30.8
20							10.4	19.6					30.0
21							12.4	18.2					30.6
22							13.2	17.0					30.2
23							15.2	15.0					30.2
Total							139.4	421.0	159.2	7.4			727.0

MONTH : JUNE

MODEL : E

TABLE: Mean number of occurrence of screen temperature (in ranges of 5 degrees) at specified time.

Time UTC	TEMPERATURE (°C)												Total
	-10 to -5	-5 to 0	0 to 5	5 to 10	10 to 15	15 to 20	20 to 25	25 to 30	30 to 35	35 to 40	40 to 45	45 to 50	
0							1.4	27.6					29.0
1							1.6	26.6	1.2				29.4
2							0.4	23.2	5.2				28.8
3							0.4	16.2	12.6				29.2
4							0.4	13.8	15.0				29.2
5							0.2	11.6	16.8	0.6			29.2
6								8.0	19.2	1.6			28.8
7								6.4	19.4	3.6			29.4
8								5.0	20.2	4.2			29.4
9								5.2	20.4	3.8			29.4
10								6.2	21.4	2.0			29.6
11								6.2	21.2	1.4			28.8
12								10.4	18.0	1.2			29.6
13								14.8	14.2	0.2			29.2
14								21.2	8.0				29.2
15							0.2	22.6	6.0				28.8
16							0.2	25.6	3.6				29.4
17							0.2	26.8	2.0				29.0
18							0.2	26.6	1.4				28.2
19							0.6	27.2	0.8				28.6
20							0.6	27.6	0.4				28.6
21							1.0	27.6					28.6
22							1.6	26.2					27.8
23							1.6	27.0	0.2				28.8
Total							10.6	439.6	227.2	18.6			696.0

MONTH : JULY

MODEL : E

TABLE: Mean number of occurrence of screen temperature (in ranges of 5 degrees) at specified time.

Time UTC	TEMPERATURE (°C)												Total
	-10 to -5	-5 to 0	0 to 5	5 to 10	10 to 15	15 to 20	20 to 25	25 to 30	30 to 35	35 to 40	40 to 45	45 to 50	
0								30.2					30.2
1								28.0	2.4				30.4
2								22.8	6.6				29.4
3								15.6	14.6				30.2
4								11.0	18.8	0.4			30.2
5								7.4	21.6	1.2			30.2
6								5.4	23.2	1.8			30.4
7								4.4	24.2	2.0			30.6
8								5.2	21.0	3.8			30.0
9								5.2	21.2	3.8			30.2
10								6.0	21.6	3.0			30.6
11								6.0	22.6	1.8			30.4
12								9.2	19.8	0.6			29.6
13							0.2	14.6	15.6	0.2			30.6
14								18.6	11.6				30.2
15								22.8	7.6				30.4
16								25.2	5.0				30.2
17								27.4	2.8				30.2
18								28.2	2.2				30.4
19								29.0	1.4				30.4
20								29.2	1.0				30.2
21								28.8	0.6	0.2			29.6
22								29.2	0.4				29.6
23								30.4	0.2				30.6
Total							0.2	439.8	266.0	18.8			724.8

MONTH : AUGUST

MODEL : E

TABLE: Mean number of occurrence of screen temperature (in ranges of 5 degrees) at specified time.

Time UTC	TEMPERATURE (°C)												Total
	-10 to -5	-5 to 0	0 to 5	5 to 10	10 to 15	15 to 20	20 to 25	25 to 30	30 to 35	35 to 40	40 to 45	45 to 50	
0							0.2	30.2					30.4
1								29.8	0.8				30.6
2								23.0	7.4				30.4
3								14.2	16.2				30.4
4								9.0	21.2	0.2			30.4
5								6.0	23.4	0.8			30.2
6								6.0	22.0	2.4			30.4
7								5.2	20.8	3.8			29.8
8								5.4	19.8	5.6			30.8
9								6.0	19.4	5.0			30.4
10								5.6	19.8	4.6			30.0
11								7.0	20.8	2.4			30.2
12								9.2	20.8	0.6			30.6
13								15.6	14.6				30.2
14								15.6	14.6				30.2
15								21.0	8.4	0.2			29.6
16								23.6	6.2				29.8
17								26.2	3.8				30.0
18								27.4	2.2				29.6
19								28.6	1.0				29.6
20								28.6	1.0				29.6
21								29.2	0.6				29.8
22								30.2					30.2
23								30.0					30.0
Total							0.2	432.6	264.8	25.6			723.2

MONTH : SEPTEMBER

MODEL : E

TABLE: Mean number of occurrence of screen temperature (in ranges of 5 degrees) at specified time.

Time UTC	TEMPERATURE (°C)												Total
	-10 to -5	-5 to 0	0 to 5	5 to 10	10 to 15	15 to 20	20 to 25	25 to 30	30 to 35	35 to 40	40 to 45	45 to 50	
0						1.6	27.4						29.0
1						0.8	27.8	0.6					29.2
2						0.4	26.6	1.8					28.8
3							19.0	10.4					29.4
4						0.2	11.4	18.2					29.8
5						0.2	8.4	20.8	0.4				29.8
6						0.2	5.4	22.8	1.0				29.4
7						0.2	4.6	22.6	2.0				29.4
8						0.2	5.8	21.4	2.6				30.0
9						0.2	6.8	20.8	2.2				30.0
10						0.2	7.4	20.4	1.6				29.6
11						0.2	9.8	19.2	0.8				30.0
12						0.2	12.2	17.2					29.6
13						0.2	17.4	12.2					29.8
14						0.2	22.6	6.6					29.4
15						0.2	26.4	3.2					29.8
16						0.4	27.8	1.8					30.0
17						0.6	28.2	1.0					29.8
18						0.8	28.0	0.8					29.6
19						1.0	28.2	0.6					29.8
20						1.0	28.2						29.2
21						1.2	28.2						29.4
22						1.2	28.0						29.2
23						2.0	27.6						29.6
Total						13.4	463.2	222.4	10.6				709.6

MONTH : OCTOBER

MODEL : E

TABLE: Mean number of occurrence of screen temperature (in ranges of 5 degrees) at specified time.

Time UTC	TEMPERATURE (°C)												Total
	-10 to -5	-5 to 0	0 to 5	5 to 10	10 to 15	15 to 20	20 to 25	25 to 30	30 to 35	35 to 40	40 to 45	45 to 50	
0						1.0	18.4	10.8					30.2
1						0.4	16.8	13.6					30.8
2							12.0	18.2	0.2				30.4
3							3.6	22.6	4.0				30.2
4							1.0	20.0	9.4				30.4
5							0.4	15.8	13.6	0.4			30.2
6							0.4	9.8	20.2	0.2			30.6
7							0.4	5.4	23.8	1.2			30.8
8							0.4	4.0	24.2	1.8			30.4
9							0.4	4.0	24.8	1.6			30.8
10							0.6	7.0	22.2	0.8			30.6
11							0.4	13.6	16.6				30.6
12							1.0	22.0	7.4				30.4
13							2.0	24.4	3.8				30.2
14							3.4	25.8	1.6				30.8
15							6.8	23.4	0.6				30.8
16							10.2	20.6					30.8
17							12.6	18.0					30.6
18							13.8	16.6					30.4
19							14.8	15.6					30.4
20							15.6	14.8					30.4
21							17.2	13.4					30.6
22							17.8	12.4					30.2
23						0.2	19.0	11.4					30.6
Total						1.6	189.0	363.2	172.4	6.0			732.2

MONTH : NOVEMBER

MODEL : E

TABLE: Mean number of occurrence of screen temperature (in ranges of 5 degrees) at specified time.

Time UTC	TEMPERATURE (°C)												Total
	-10 to -5	-5 to 0	0 to 5	5 to 10	10 to 15	15 to 20	20 to 25	25 to 30	30 to 35	35 to 40	40 to 45	45 to 50	
0					0.8	18.2	9.6						28.6
1					0.6	16.6	11.6	0.4					29.2
2						11.8	16.6	1.0					29.4
3						1.8	22.4	5.6					29.8
4							15.2	14.0	0.2				29.4
5							6.4	22.4	1.0				29.8
6							2.2	23.8	4.0				30.0
7							0.6	22.0	7.2				29.8
8							0.2	20.6	8.8	0.2			29.8
9							0.4	21.0	7.6	0.2			29.2
10							0.4	23.4	5.4				29.2
11							3.8	24.0	1.8				29.6
12							16.4	13.6					30.0
13						0.4	21.4	7.6					29.4
14						2.2	23.6	3.0					28.8
15						5.4	21.4	1.8					28.6
16						8.0	19.8	1.0					28.8
17						8.8	19.4	0.4					28.6
18						10.4	18.8	0.2					29.4
19						11.8	17.4						29.2
20						12.4	16.6						29.0
21						14.0	15.0						29.0
22					0.4	15.0	13.0						28.4
23					0.8	17.6	10.6						29.0
Total					2.6	154.4	302.8	205.8	36.0	0.4			702.0

MONTH : DECEMBER

MODEL : E

TABLE: Mean number of occurrence of screen temperature (in ranges of 5 degrees) at specified time.

Time UTC	TEMPERATURE (°C)												Total
	-10 to -5	-5 to 0	0 to 5	5 to 10	10 to 15	15 to 20	20 to 25	25 to 30	30 to 35	35 to 40	40 to 45	45 to 50	
0				0.2	13.8	16.0	0.6						30.6
1					13.8	16.4	0.4						30.6
2					8.2	21.2	0.4						29.8
3					1.6	21.4	7.6						30.6
4					0.4	11.8	18.0						30.2
5					0.2	3.6	23.2	3.2					30.2
6						1.2	17.8	11.0					30.0
7						0.6	11.2	18.4					30.2
8						0.2	9.2	20.8					30.2
9						0.2	8.0	22.6					30.8
10						0.6	11.0	19.2					30.8
11						0.6	23.0	6.6					30.2
12						5.8	24.2	0.4					30.4
13						13.6	17.2						30.8
14					0.4	21.2	9.0						30.6
15					1.0	25.8	3.8						30.6
16					2.4	26.0	2.2						30.6
17					4.0	25.4	1.4						30.8
18					4.8	24.6	1.4						30.8
19					6.8	22.2	1.4						30.4
20					8.2	21.6	1.0						30.8
21					9.6	20.0	1.0	0.2					30.8
22					11.2	18.6	1.0						30.8
23					13.0	16.0	0.8						29.8
Total				0.2	99.4	334.6	194.8	102.4					731.4

Month : January

TABLE : VI

TABLE: Mean daily atmospheric pressure (hPa) at mean sea level (msl) at standard times of synoptic observation (UTC).

<i>DATE</i>	<i>0000</i>	<i>0300</i>	<i>0600</i>	<i>1200</i>	<i>1800</i>
1	1010.5	1012.9	1011.0	1008.7	1010.7
2	1009.8	1012.2	1010.4	1008.0	1010.2
3	1009.5	1012.8	1009.7	1007.9	1010.0
4	1010.1	1011.9	1009.9	1007.4	1009.0
5	1007.8	1010.2	1008.5	1005.8	1008.1
6	1008.3	1010.9	1008.9	1006.7	1008.6
7	1008.6	1011.4	1009.6	1007.3	1010.0
8	1009.9	1011.8	1009.8	1007.4	1009.2
9	1008.4	1010.6	1008.9	1006.9	1009.3
10	1009.2	1011.9	1010.8	1008.9	1010.8
11	1010.4	1012.9	1010.8	1009.1	1010.6
12	1010.2	1012.7	1010.5	1008.0	1010.0
13	1010.0	1012.2	1010.4	1007.5	1009.9
14	1009.7	1012.4	1010.4	1008.5	1010.4
15	1010.0	1012.3	1010.2	1007.2	1009.8
16	1009.2	1011.9	1009.6	1007.7	1009.9
17	1009.9	1012.3	1010.6	1007.8	1010.1
18	1010.2	1013.0	1011.5	1008.8	1010.6
19	1010.5	1012.9	1011.4	1008.9	1011.3
20	1011.2	1013.7	1012.3	1009.9	1012.3
21	1012.0	1014.5	1012.7	1010.7	1010.5
22	1011.5	1013.8	1011.7	1010.0	1011.4
23	1010.5	1012.5	1010.5	1007.7	1011.1
24	1010.1	1012.4	1010.8	1008.0	1010.5
25	1009.7	1011.9	1010.2	1008.8	1010.8
26	1010.4	1012.5	1010.9	1007.6	1009.4
27	1009.0	1011.4	1009.8	1007.0	1009.3
28	1009.0	1011.3	1010.2	1007.6	1010.3
29	1010.1	1014.3	1011.2	1008.6	1010.3
30	1009.2	1011.4	1009.6	1006.9	1009.3
31	1009.2	1011.8	1010.2	1007.8	1009.9
MEAN	1009.8	1012.3	1010.4	1008.0	1010.1

Month : February

TABLE : VI

TABLE: Mean daily atmospheric pressure (hPa) at mean sea level (msl) at standard times of synoptic observation (UTC).

DATE	0000	0300	0600	1200	1800
1	1009.6	1012.0	1010.3	1007.9	1010.8
2	1010.4	1012.6	1010.7	1008.0	1010.6
3	1010.3	1012.4	1010.3	1007.1	1009.2
4	1008.1	1010.2	1008.2	1006.2	1010.5
5	1008.2	1011.4	1009.6	1006.4	1008.6
6	1007.9	1010.2	1008.3	1005.0	1008.1
7	1006.4	1008.6	1007.1	1004.7	1007.0
8	1005.9	1008.9	1006.4	1003.4	1006.0
9	1006.0	1008.1	1007.0	1004.0	1007.4
10	1005.9	1009.8	1008.7	1005.8	1009.6
11	1009.2	1011.5	1010.0	1007.0	1009.9
12	1009.3	1011.8	1010.6	1007.2	1010.1
13	1010.3	1012.5	1011.0	1007.8	1010.7
14	1010.3	1012.4	1011.0	1008.6	1010.8
15	1010.1	1012.6	1011.7	1009.3	1011.2
16	1009.9	1012.0	1010.6	1006.9	1009.0
17	1007.8	1009.8	1008.3	1005.3	1008.4
18	1008.4	1010.2	1009.4	1006.6	1009.6
19	1008.4	1010.8	1009.3	1005.6	1007.9
20	1006.7	1008.6	1007.7	1004.6	1006.8
21	1005.8	1008.2	1007.0	1003.6	1006.3
22	1006.3	1008.6	1007.5	1004.4	1007.1
23	1006.8	1009.6	1008.0	1005.6	1008.8
24	1008.4	1010.7	1009.3	1006.6	1009.4
25	1008.5	1010.5	1008.8	1005.1	1006.6
26	1006.6	1008.1	1007.0	1003.9	1007.0
27	1006.8	1009.4	1008.6	1005.0	1007.8
28	1007.6	1010.2	1008.9	1005.4	1007.7
29	1010.1	1014.3	1011.2	1008.6	1010.3
MEAN	1008.1	1010.4	1009.0	1006.0	1008.7

Month : March

TABLE : VI

TABLE: Mean daily atmospheric pressure (hPa) at mean sea level (msl) at standard times of synoptic observation (UTC).

DATE	0000	0300	0600	1200	1800
1	1007.8	1010.4	1009.1	1005.5	1007.7
2	1006.7	1009.0	1008.0	1004.7	1005.8
3	1004.2	1006.6	1005.3	1001.9	1005.2
4	1005.1	1008.0	1006.7	1003.6	1005.8
5	1005.8	1008.3	1007.0	1003.4	1006.8
6	1006.1	1008.5	1006.9	1003.5	1007.1
7	1007.5	1010.2	1008.9	1005.6	1007.9
8	1008.2	1010.7	1008.8	1004.9	1007.0
9	1007.7	1010.0	1008.2	1004.5	1006.7
10	1006.5	1008.8	1007.4	1003.7	1006.3
11	1006.8	1009.2	1007.7	1004.9	1007.3
12	1006.6	1008.9	1007.6	1004.0	1007.0
13	1006.8	1009.4	1008.3	1005.1	1007.9
14	1007.6	1010.1	1008.4	1004.8	1008.1
15	1008.0	1010.3	1008.7	1005.2	1007.6
16	1007.5	1009.3	1007.8	1004.3	1007.0
17	1006.2	1008.4	1006.7	1003.1	1006.2
18	1005.3	1008.3	1006.8	1004.4	1007.1
19	1006.8	1009.2	1007.9	1004.4	1007.3
20	1006.6	1008.6	1007.0	1003.6	1006.7
21	1005.6	1007.7	1006.1	1002.5	1004.3
22	1004.9	1007.0	1005.4	1002.3	1005.3
23	1005.3	1007.4	1005.8	1003.3	1006.5
24	1006.4	1009.0	1007.3	1004.2	1006.9
25	1007.2	1009.8	1008.4	1005.1	1008.2
26	1008.2	1010.6	1008.9	1005.0	1007.5
27	1007.0	1009.5	1008.7	1005.0	1007.3
28	1006.9	1008.8	1007.5	1004.2	1006.5
29	1005.5	1007.5	1005.9	1002.4	1004.6
30	1003.8	1006.1	1005.2	1001.8	1004.9
31	1006.1	1006.7	1005.0	1001.4	1004.6
MEAN	1006.5	1008.8	1007.3	1003.9	1006.6

Month : April

TABLE : VI

TABLE: Mean daily atmospheric pressure (hPa) at mean sea level (msl) at standard times of synoptic observation (UTC).

DATE	0000	0300	0600	1200	1800
1	1004.0	1005.7	1004.4	1000.8	1003.7
2	1003.2	1005.2	1003.9	1000.2	1002.8
3	1003.4	1005.3	1004.5	1001.0	1004.6
4	1002.7	1004.6	1003.3	0999.9	1002.7
5	1002.5	1004.8	1003.7	1000.1	1003.0
6	1003.4	1005.6	1004.1	1001.3	1003.9
7	1004.0	1006.8	1004.8	1000.6	1003.2
8	1003.6	1005.6	1004.3	1000.0	1002.7
9	1003.3	1005.1	1003.7	0999.6	1002.3
10	1002.8	1005.1	1004.0	1000.5	1003.3
11	1002.9	1004.9	1004.1	1000.4	1003.3
12	1003.4	1005.6	1004.3	1000.4	1004.3
13	1004.1	1006.1	1004.9	1001.0	1003.6
14	1003.5	1005.4	1004.5	1000.3	1004.0
15	1004.2	1006.5	1004.6	1001.3	1004.5
16	1004.0	1006.0	1004.4	1000.9	1003.3
17	1003.3	1005.0	1003.0	0999.9	1002.7
18	1003.4	1005.1	1003.7	1000.3	1002.5
19	1002.1	1004.3	1003.2	1000.4	1002.7
20	1002.6	1004.5	1003.9	0999.7	1002.0
21	1001.0	1002.9	1001.4	0998.1	1001.1
22	1001.2	1003.8	1002.1	0998.4	1000.3
23	1000.8	1002.9	1001.7	0997.6	1000.4
24	0999.8	1002.5	1001.1	0998.0	1000.4
25	1001.7	1003.2	1002.2	0999.3	1002.2
26	1002.7	1004.9	1002.5	1000.8	1003.0
27	1003.6	1004.4	1003.3	0999.3	1003.0
28	1003.3	1004.8	1003.1	0999.6	1004.1
29	1002.8	1005.0	1004.4	1001.1	1003.1
30	1003.7	1005.1	1003.9	1000.3	1002.7
MEAN	1002.9	1004.9	1003.6	1000.0	1002.8

Month : May

TABLE : VI

TABLE: Mean daily atmospheric pressure (hPa) at mean sea level (msl) at standard times of synoptic observation (UTC).

DATE	0000	0300	0600	1200	1800
1	1003.2	1004.5	1003.2	1000.7	1002.9
2	1003.7	1005.4	1005.3	1001.6	1003.8
3	1003.9	1006.0	1005.1	1001.6	1003.4
4	1003.7	1005.5	1005.7	1001.6	1003.9
5	1003.6	1005.1	1004.2	1001.3	1004.2
6	1003.9	1005.7	1004.5	1000.4	1002.6
7	1003.5	1004.9	1003.6	1000.2	1002.7
8	1002.3	1004.0	1002.9	0999.1	1001.2
9	1000.8	1002.7	1002.4	0997.6	1001.0
10	1001.9	1003.1	1002.6	0999.3	1002.3
11	1002.2	1004.1	1002.8	0999.5	1002.3
12	1002.4	1003.7	1002.0	0999.0	1001.4
13	1001.7	1003.6	1002.0	0998.6	1000.8
14	1001.1	1003.0	1001.9	0998.3	1000.5
15	1000.5	1001.6	1000.5	0997.6	0999.2
16	0999.7	1001.3	1000.5	0997.1	0999.8
17	1000.1	1001.8	1000.3	0996.9	0999.1
18	1000.1	1001.6	1000.5	0997.9	1001.1
19	1000.7	1002.5	1001.0	0997.6	1000.1
20	0999.6	1000.6	0999.7	0996.0	0997.9
21	0997.9	0999.3	0998.5	0995.0	0997.0
22	0996.5	0998.8	0999.2	0995.5	0998.3
23	0999.2	1001.3	1000.2	0997.0	0999.4
24	0997.8	1000.5	0999.7	0996.1	0999.0
25	0998.3	1000.1	0999.4	0996.7	0999.7
26	1000.9	1002.3	1001.4	0997.8	1000.4
27	1000.6	1001.8	1001.0	0998.4	0999.5
28	0999.9	1001.0	0999.3	0996.0	0998.6
29	0998.6	0999.5	0998.9	0996.3	0998.7
30	0998.2	0999.6	0998.8	0995.9	0998.4
31	0998.1	1000.7	0999.6	0996.9	0999.2
MEAN	1000.8	1002.4	1001.5	0998.2	1000.6

Month : June

TABLE : VI

TABLE: Mean daily atmospheric pressure (hPa) at mean sea level (msl) at standard times of synoptic observation (UTC).

<i>DATE</i>	<i>0000</i>	<i>0300</i>	<i>0600</i>	<i>1200</i>	<i>1800</i>
1	0999.9	1001.2	1000.1	0997.1	1000.1
2	1000.0	1001.0	1000.1	0996.8	0999.4
3	0999.7	1000.4	0999.2	0996.3	0998.1
4	0998.9	0999.9	0999.3	0996.1	0998.5
5	0998.8	1000.6	0999.3	0996.3	0998.6
6	0999.0	1001.0	0999.4	0996.2	0998.0
7	0998.2	0999.5	0998.3	0995.1	0996.4
8	0996.5	0997.6	0996.2	0992.8	0995.9
9	0995.8	0996.2	0995.1	0992.6	0995.1
10	0994.6	0995.6	0994.7	0992.1	0995.2
11	0994.6	0995.9	0994.1	0991.5	0993.9
12	0993.2	0994.6	0993.8	0991.1	0992.9
13	0992.9	0993.8	0993.6	0992.4	0994.9
14	0994.7	0995.9	0995.2	0992.9	0996.3
15	0995.2	0996.4	0995.9	0993.8	0996.3
16	0996.0	0997.4	0996.5	0994.0	0996.5
17	0995.4	0996.8	0995.7	0993.9	0996.1
18	0995.8	0997.4	0996.2	0993.3	0996.1
19	0995.5	0997.2	0995.7	0993.4	0996.3
20	0995.8	0996.7	0996.2	0993.8	0996.5
21	0996.3	0997.4	0996.5	0993.7	0996.3
22	0995.9	0997.2	0997.4	0993.8	0994.3
23	0994.9	0996.2	0995.3	0992.7	0995.1
24	0994.5	0995.8	0995.0	0992.0	0995.2
25	0995.9	0995.4	0994.6	0994.4	0995.5
26	0995.0	0995.5	0994.5	0993.2	0996.2
27	0996.3	0997.8	0997.1	0995.5	0998.5
28	0998.8	1000.1	0999.2	0996.8	0998.2
29	0998.4	0999.2	0997.9	0995.1	0997.1
30	0996.4	0997.6	0996.6	0994.0	0996.9
MEAN	0996.4	0997.6	0996.6	0994.1	0996.5

Month : July

TABLE : VI

TABLE: Mean daily atmospheric pressure (hPa) at mean sea level (msl) at standard times of synoptic observation (UTC).

DATE	0000	0300	0600	1200	1800
1	0996.0	0997.7	0996.7	0994.3	0996.6
2	0996.1	0997.2	0996.5	0993.7	0995.7
3	0994.6	0995.3	0994.6	0992.2	0994.5
4	0993.7	0994.9	0994.3	0992.1	0995.0
5	0994.6	0995.8	0995.4	0993.2	0996.2
6	0995.9	0996.9	0996.0	0993.3	0995.9
7	0995.1	0996.2	0995.4	0992.5	0994.8
8	0994.5	0995.7	0994.8	0993.1	0995.8
9	0995.4	0996.6	0996.0	0994.0	0997.0
10	0996.6	0997.8	0997.3	0994.3	0997.0
11	0995.8	0997.8	0996.8	0993.9	0996.9
12	0996.3	0997.2	0996.5	0993.5	0996.7
13	0996.1	0997.5	0996.2	0993.0	0996.1
14	0995.3	0996.1	0994.8	0992.3	0995.2
15	0994.9	0996.1	0995.5	0994.2	0996.3
16	0995.6	0996.7	0996.8	0994.2	0996.5
17	0995.6	0996.9	0996.0	0993.3	0996.0
18	0995.5	0996.2	0994.8	0992.6	0995.2
19	0994.9	0996.0	0995.3	0992.4	0995.1
20	0994.5	0995.4	0994.7	0992.4	0995.7
21	0995.8	0997.2	0996.6	0994.6	0997.7
22	0997.1	0998.5	0997.7	0995.3	0998.1
23	0997.5	0998.8	0997.8	0995.7	0998.3
24	0997.4	0998.8	0997.8	0995.3	0998.3
25	0997.4	0998.6	0997.8	0995.8	0998.7
26	0998.2	0999.7	0998.2	0996.0	0998.6
27	0997.6	0999.0	0997.9	0995.3	0998.5
28	0997.1	0998.3	0997.4	0994.7	0997.6
29	0996.8	0997.9	0996.9	0993.6	0997.0
30	0995.4	0997.1	0996.1	0993.5	0995.7
31	0995.7	0997.1	0996.0	0993.8	0996.3
MEAN	0995.9	0997.1	0996.3	0993.8	0996.5

Month : August

TABLE : VI

TABLE: Mean daily atmospheric pressure (hPa) at mean sea level (msl) at standard times of synoptic observation (UTC).

DATE	0000	0300	0600	1200	1800
1	0995.7	0997.0	0996.1	0993.4	0996.4
2	0995.7	0996.8	0995.5	0993.4	0995.7
3	0995.1	0996.1	0995.0	0992.1	0995.8
4	0994.5	0995.7	0994.7	0992.4	0995.5
5	0995.2	0996.8	0996.2	0993.7	0996.5
6	0995.8	0996.8	0995.8	0993.1	0996.7
7	0996.5	0997.9	0996.8	0994.4	0997.6
8	0997.1	0998.6	0998.0	0994.6	0997.2
9	0997.0	0998.0	0997.1	0994.5	0997.2
10	0996.7	0997.9	0997.0	0994.7	0997.3
11	0996.4	0997.8	0997.0	0994.4	0997.1
12	0996.7	0997.9	0997.5	0994.5	0996.9
13	0996.7	0998.1	0997.4	0994.8	0997.4
14	0997.7	0998.3	0996.8	0994.4	0997.3
15	0996.8	0998.3	0997.2	0994.8	0997.5
16	0996.9	0998.5	0997.5	0994.4	0996.8
17	0997.2	0997.4	0996.4	0994.1	0996.9
18	0997.0	0998.7	0997.6	0995.3	0998.3
19	0998.0	0999.6	0998.0	0995.5	0998.7
20	0997.8	0999.6	0998.7	0995.9	0998.3
21	0997.4	0998.7	0997.8	0994.9	0997.6
22	0997.7	0998.9	0998.1	0995.6	0998.3
23	0998.5	0999.9	0998.7	0995.8	0998.2
24	0997.9	0999.6	0998.1	0995.7	0998.6
25	0997.8	0999.2	0997.8	0994.9	0998.4
26	0997.9	0999.6	0998.8	0995.1	0998.4
27	0998.5	0999.8	0999.6	0996.7	1000.1
28	0999.7	1001.3	1000.2	0997.1	0998.3
29	0999.1	1000.3	0998.9	0996.1	0998.5
30	0998.1	0999.5	0998.6	0995.9	0999.1
31	0998.4	1000.0	0999.1	0996.2	0999.0
MEAN	0997.1	0998.5	0997.5	0994.8	0997.6

Month : September

TABLE : VI

TABLE: Mean daily atmospheric pressure (hPa) at mean sea level (msl) at standard times of synoptic observation (UTC).

DATE	0000	0300	0600	1200	1800
1	0998.0	0999.5	0998.5	0996.0	0998.6
2	0997.9	0999.0	0998.5	0995.6	0998.5
3	0998.1	0999.8	0998.9	0996.6	0999.8
4	0999.2	1000.6	0999.3	0996.0	0998.6
5	0998.7	0999.9	0999.3	0996.0	0999.0
6	0999.0	1000.4	0999.5	0996.7	0999.7
7	0999.6	1001.4	1001.0	0998.0	1000.8
8	1000.4	1001.8	1000.6	0997.7	1000.4
9	0999.8	1001.7	1000.8	0997.9	1001.1
10	1001.2	1003.1	1002.2	0999.7	1002.3
11	1001.6	1002.8	1002.7	1000.3	1002.2
12	1001.7	1003.4	1002.0	0999.2	1001.5
13	1001.2	1002.9	1001.3	0998.5	1001.4
14	1001.2	1003.2	1001.5	0998.6	1001.5
15	1001.3	1003.0	1001.8	0997.9	1000.4
16	0999.8	1001.4	0999.4	0996.3	0998.6
17	0998.5	0999.7	0998.3	0996.2	0999.5
18	0999.6	1001.2	0999.8	0996.9	1000.1
19	0999.5	1001.3	0999.7	0997.8	1000.7
20	1000.4	1002.5	1001.7	0999.9	1002.2
21	1001.8	1003.7	1003.0	1000.6	1002.5
22	1001.9	1004.4	1002.7	1000.3	1001.8
23	1001.5	1003.1	1001.7	0999.8	1001.6
24	1000.6	1002.4	1001.2	0998.9	1000.5
25	1000.3	1002.1	1000.9	0998.6	1001.2
26	1000.9	1003.0	1002.0	0999.6	1002.5
27	1002.3	1004.1	1002.7	1000.2	1002.6
28	1002.7	1004.6	1003.1	1000.2	1002.8
29	1002.7	1004.6	1003.0	1000.4	1003.1
30	1003.5	1005.5	1003.5	1001.5	1004.1
MEAN	1000.5	1002.2	1001.0	0998.4	1001.0

Month : October

TABLE : VI

TABLE: Mean daily atmospheric pressure (hPa) at mean sea level (msl) at standard times of synoptic observation (UTC).

DATE	0000	0300	0600	1200	1800
1	1004.3	1006.5	1004.4	1001.6	1004.4
2	1004.5	1006.3	1004.1	1001.2	1003.3
3	1003.5	1005.6	1003.7	1001.1	1003.7
4	1004.1	1005.8	1003.8	1002.1	1003.9
5	1004.2	1004.4	1003.6	1000.9	1003.7
6	1003.8	1005.6	1003.8	1001.0	1003.6
7	1003.6	1005.2	1003.3	1001.1	1003.9
8	1003.3	1005.2	1003.1	1000.7	1003.3
9	1002.3	1004.1	1002.3	1000.3	1002.4
10	1002.2	1004.0	1002.3	1000.4	1003.9
11	1003.0	1004.6	1003.3	1002.0	1004.4
12	1003.7	1006.4	1003.8	1002.1	1004.1
13	1004.2	1005.9	1004.4	1002.0	1004.6
14	1005.1	1007.1	1005.7	1003.2	1005.3
15	1005.2	1007.6	1005.6	1003.3	1005.7
16	1006.1	1007.9	1006.0	1002.7	1005.7
17	1005.7	1007.6	1005.2	1002.5	1004.7
18	1005.4	1007.3	1005.0	1002.5	1004.9
19	1005.4	1007.2	1005.0	1002.8	1005.2
20	1005.3	1007.3	1005.3	1003.5	1005.6
21	1005.7	1007.7	1005.2	1003.0	1004.6
22	1005.2	1007.4	1005.5	1003.0	1005.4
23	1005.1	1007.3	1005.3	1003.1	1005.1
24	1005.7	1007.8	1005.9	1003.9	1005.9
25	1006.9	1009.1	1007.2	1005.4	1007.7
26	1008.4	1010.5	1008.6	1006.6	1008.8
27	1008.6	1010.7	1007.4	1006.4	1008.4
28	1008.6	1010.6	1007.5	1006.3	1008.8
29	1009.2	1010.8	1008.1	1006.6	1008.6
30	1009.0	1010.9	1008.6	1007.0	1009.4
31	1009.2	1010.9	1008.7	1007.0	1009.0
MEAN	1005.4	1007.3	1005.2	1003.1	1005.4

Month : November

TABLE : VI

TABLE: Mean daily atmospheric pressure (hPa) at mean sea level (msl) at standard times of synoptic observation (UTC).

DATE	0000	0300	0600	1200	1800
1	1009.2	1010.8	1008.5	1006.7	1008.6
2	1008.2	1010.4	1008.1	1005.7	1008.1
3	1008.4	1010.5	1008.0	1005.6	1007.6
4	1007.5	1009.5	1007.3	1005.1	1007.0
5	1007.0	1008.9	1006.8	1004.3	1005.9
6	1006.2	1008.3	1006.2	1004.3	1006.7
7	1007.6	1009.7	1007.6	1006.0	1008.4
8	1008.4	1010.5	1008.3	1006.2	1008.2
9	1007.8	1010.0	1007.7	1005.6	1007.3
10	1007.5	1009.6	1007.1	1004.9	1007.5
11	1007.7	1009.6	1006.4	1005.6	1008.0
12	1007.8	1009.6	1007.7	1005.8	1007.0
13	1007.9	1009.9	1007.8	1005.6	1007.6
14	1007.4	1009.7	1007.3	1005.5	1007.3
15	1007.3	1009.7	1007.6	1006.0	1007.7
16	1007.2	1009.5	1007.5	1006.3	1007.6
17	1007.6	1009.5	1007.4	1005.9	1008.0
18	1008.3	1011.0	1008.8	1006.9	1009.2
19	1009.1	1011.1	1008.8	1006.6	1008.5
20	1009.0	1011.2	1010.5	1006.0	1008.1
21	1008.4	1010.6	1008.0	1005.9	1007.6
22	1007.8	1010.0	1007.8	1005.8	1007.8
23	1008.0	1010.2	1008.0	1006.1	1008.5
24	1008.6	1010.8	1008.4	1006.8	1008.7
25	1008.6	1010.6	1008.3	1006.4	1008.1
26	1008.1	1010.1	1007.5	1005.8	1007.4
27	1007.9	1010.2	1007.6	1006.0	1008.1
28	1008.5	1011.2	1009.2	1008.0	1010.1
29	1010.2	1012.4	1010.4	1008.7	1010.4
30	1010.2	1012.3	1009.7	1007.6	1009.3
MEAN	1008.1	1010.2	1008.0	1006.1	1008.0

Month : December

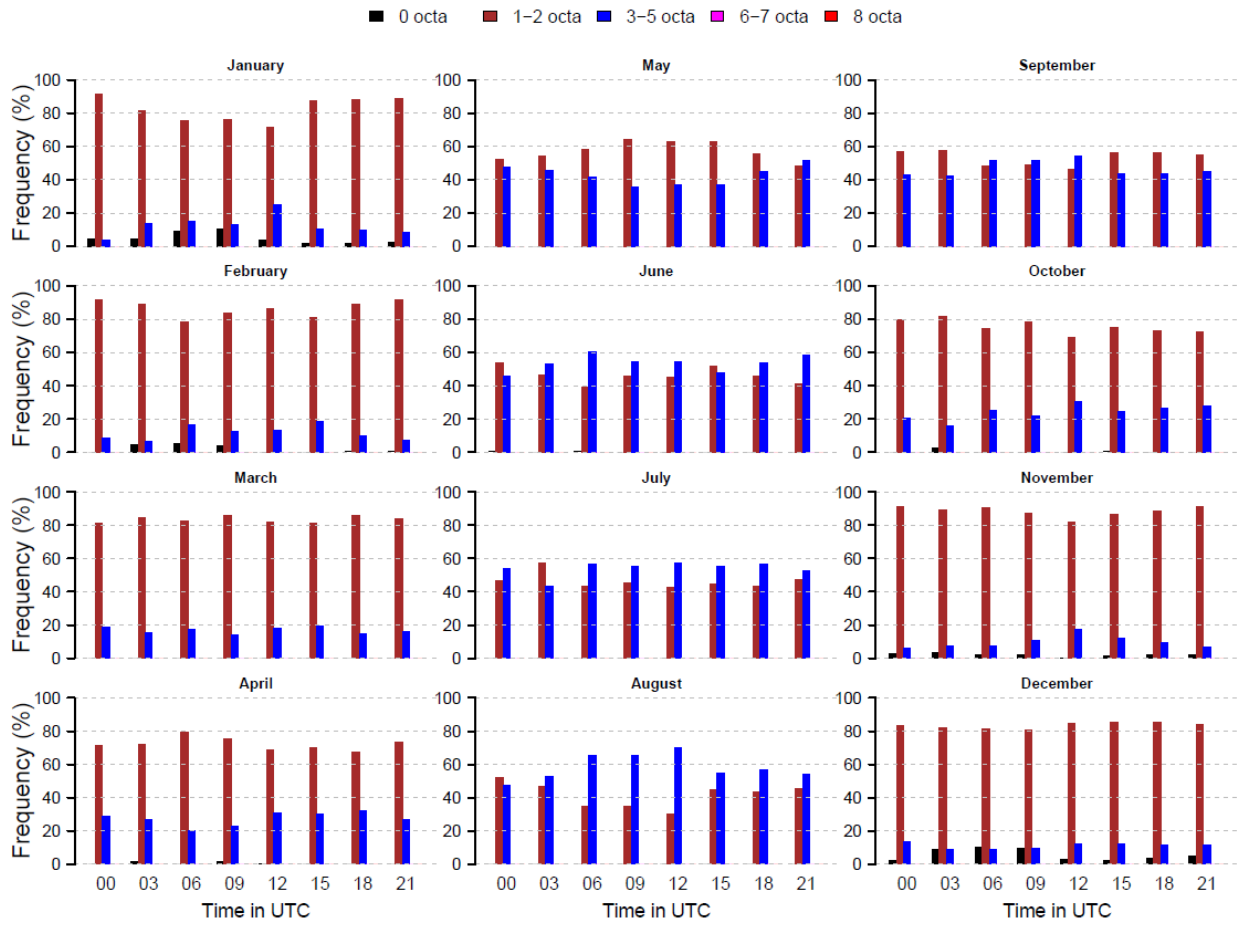
TABLE : VI

TABLE: Mean daily atmospheric pressure (hPa) at mean sea level (msl) at standard times of synoptic observation (UTC).

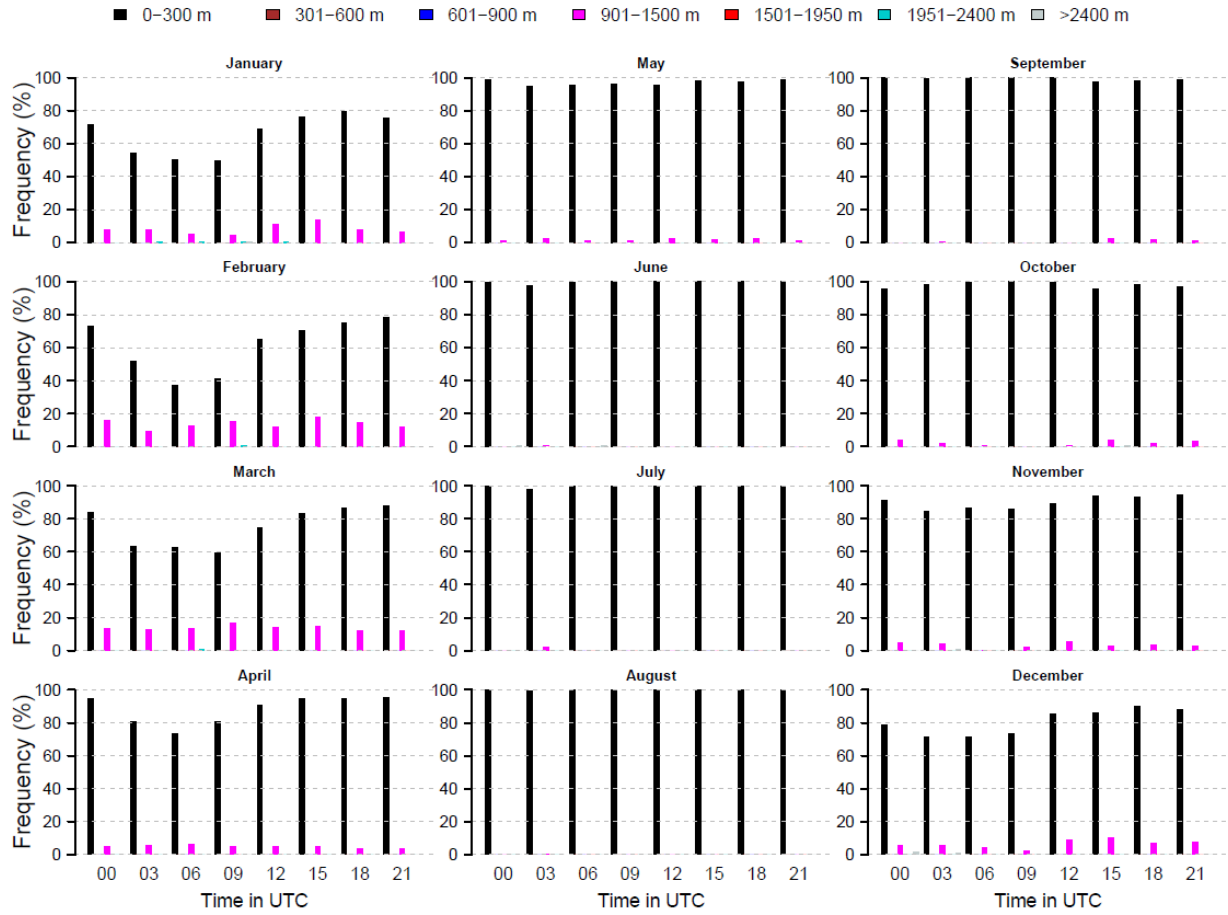
DATE	0000	0300	0600	1200	1800
1	1009.2	1011.2	1008.7	1006.9	1008.9
2	1008.9	1011.2	1008.9	1007.2	1009.1
3	1009.3	1011.6	1009.2	1007.5	1009.5
4	1010.0	1012.0	1009.9	1008.1	1009.9
5	1009.6	1011.6	1009.3	1007.6	1009.2
6	1009.1	1011.1	1008.8	1006.9	1009.0
7	1008.8	1010.7	1008.4	1006.8	1009.0
8	1008.8	1011.1	1008.8	1007.2	1008.9
9	1008.8	1011.0	1008.9	1007.2	1009.0
10	1008.2	1010.5	1008.3	1006.4	1008.4
11	1007.8	1010.2	1008.3	1006.1	1008.5
12	1008.3	1010.7	1008.8	1006.8	1009.2
13	1009.4	1012.2	1009.9	1008.0	1009.9
14	1010.0	1011.8	1010.6	1008.4	1010.1
15	1009.5	1012.2	1010.4	1009.0	1011.6
16	1011.1	1013.5	1011.4	1009.4	1011.4
17	1010.7	1013.0	1010.8	1008.9	1011.2
18	1011.1	1013.6	1012.0	1009.8	1011.7
19	1012.1	1014.4	1012.5	1011.9	1011.9
20	1010.8	1013.7	1011.4	1009.2	1010.9
21	1010.5	1013.0	1010.9	1009.1	1010.8
22	1010.6	1013.4	1011.0	1009.1	1010.3
23	1009.7	1011.7	1009.6	1007.7	1009.6
24	1009.4	1011.9	1009.9	1007.5	1009.4
25	1009.6	1011.9	1009.9	1007.7	1009.2
26	1009.2	1011.3	1009.6	1007.6	1009.6
27	1009.8	1012.0	1010.2	1008.5	1010.5
28	1010.5	1012.6	1010.5	1008.7	1010.8
29	1010.9	1013.3	1011.3	1009.3	1011.2
30	1011.0	1013.3	1011.3	1009.3	1011.3
31	1011.1	1013.5	1011.4	1009.3	1010.0
MEAN	1009.8	1012.1	1010.0	1008.2	1010.0

DIAGRAMS

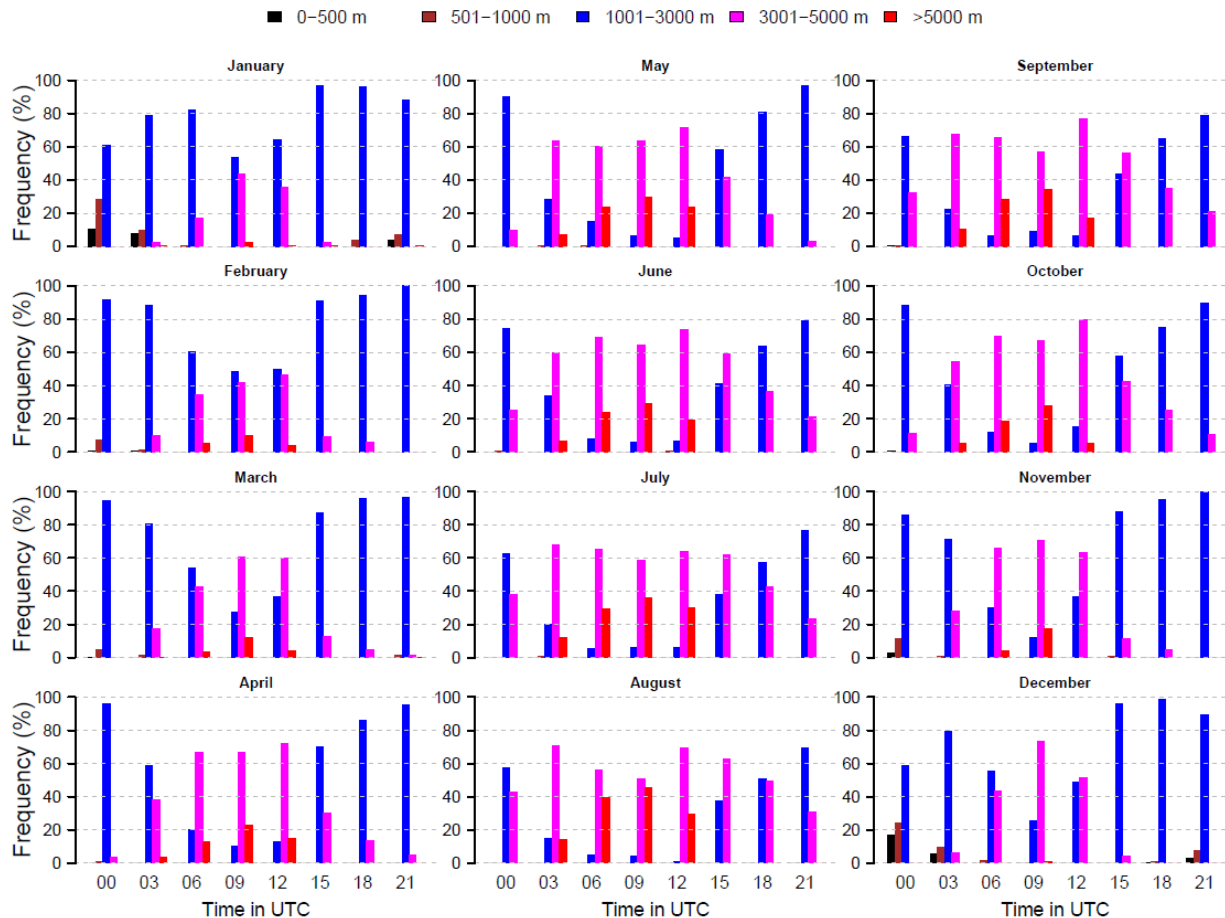
Frequency of Low Cloud Amount



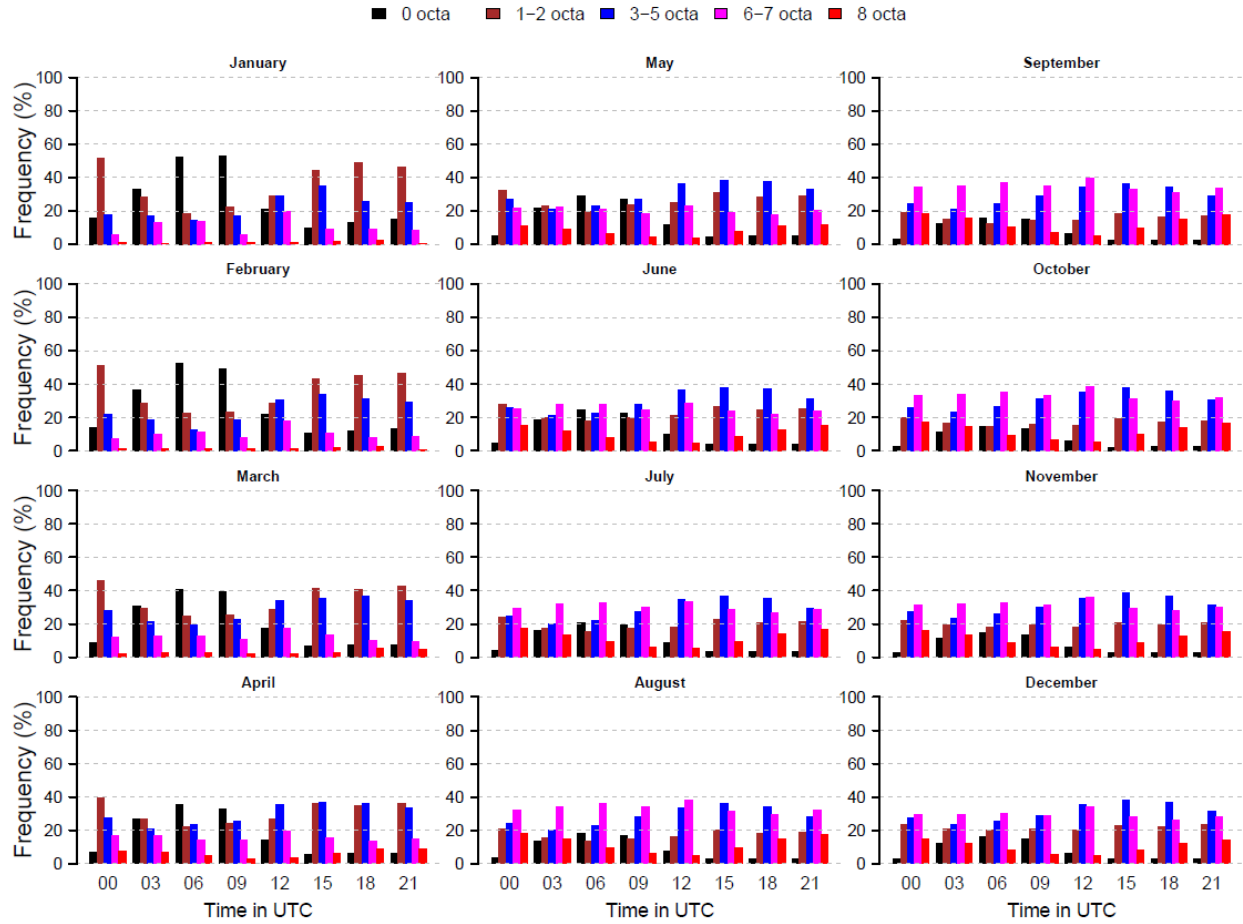
Frequency of Height of Low Cloud



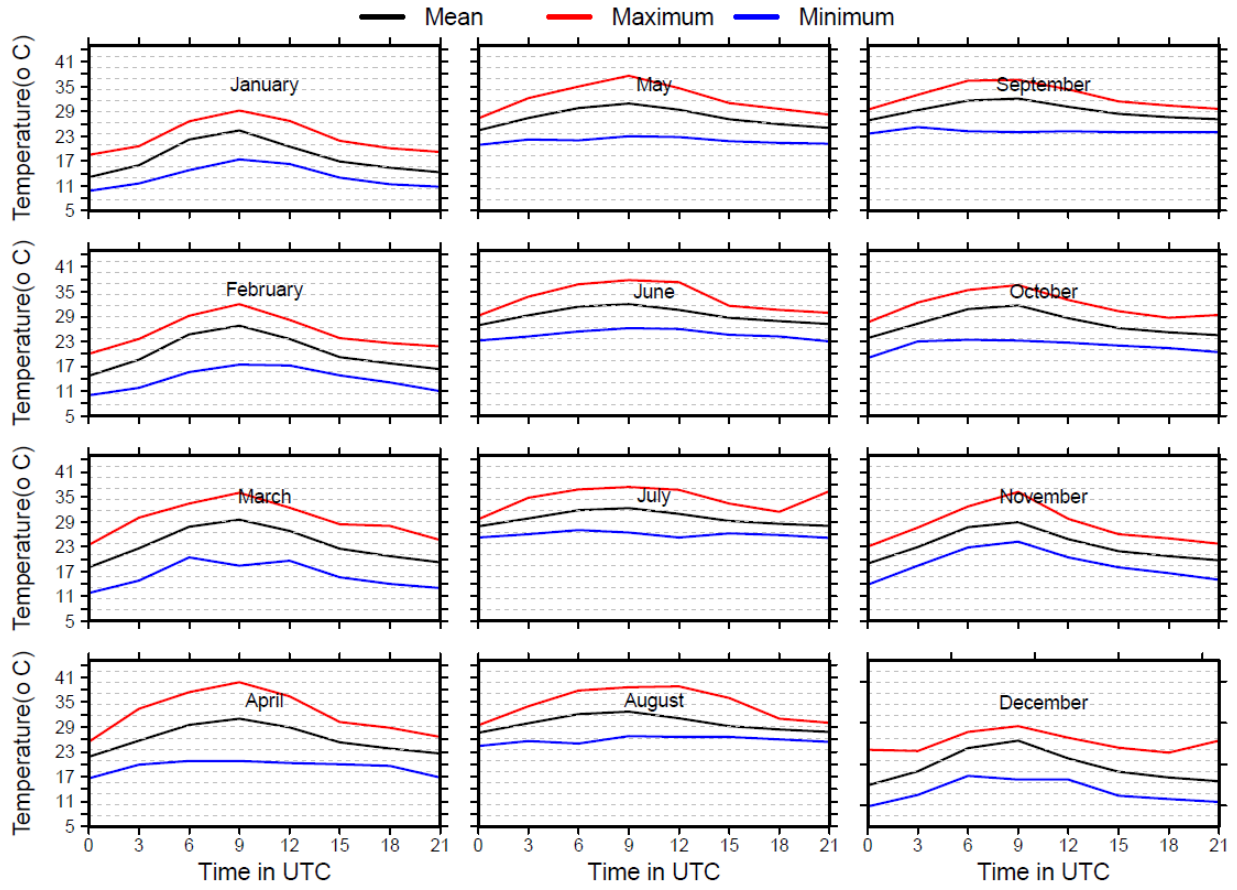
Frequency of Visibility



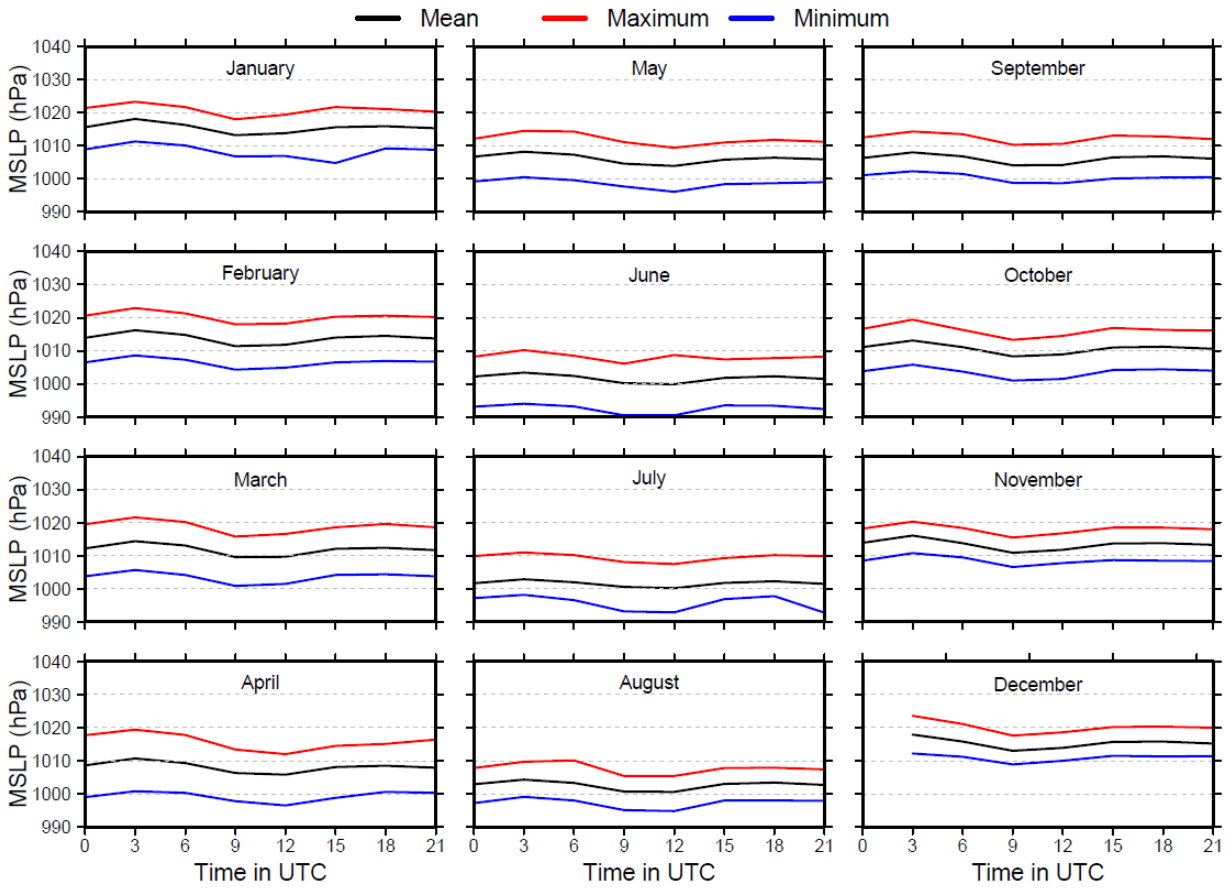
Frequency of Total Cloud Amount



Diurnal variation of Temperature



Diurnal variation of Mean Sea Level Pressure



Diurnal variation of Station Level Pressure

