



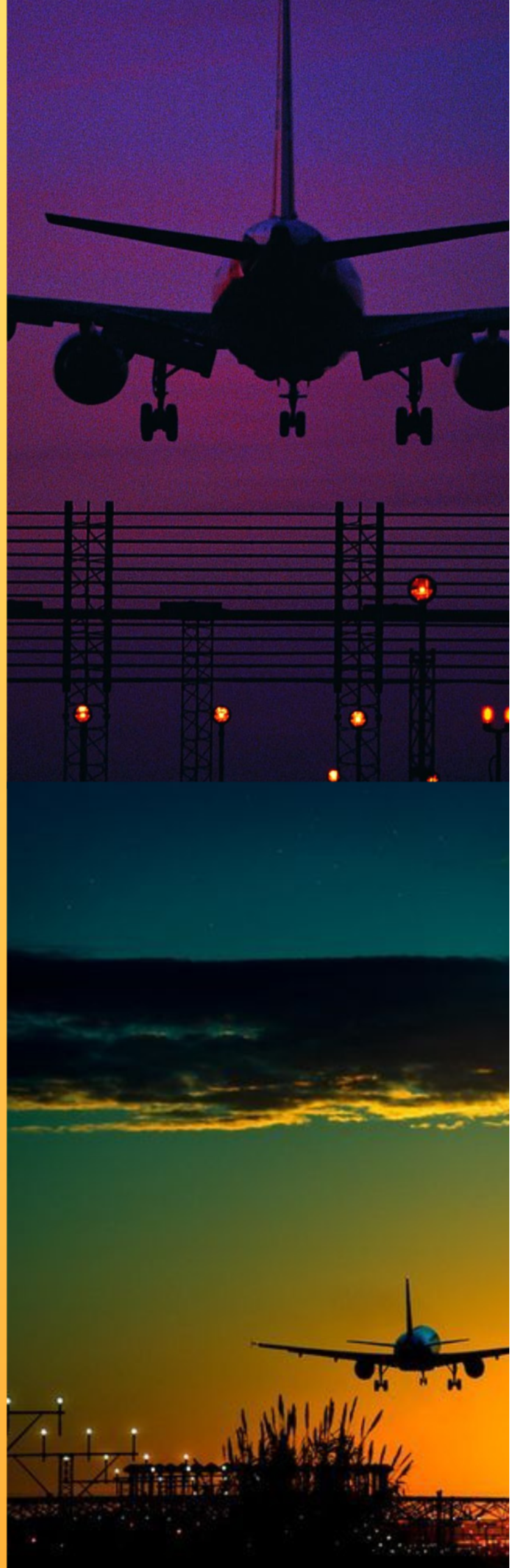
2017-2021

# AERODROME CLIMATOLOGICAL SUMMARIES

## GAYA INTERNATIONAL AIRPORT

## GAYA

OFFICE OF CLIMATE RESEARCH & SERVICES  
INDIA METEOROLOGICAL DEPARTMENT



## PREFACE

The aviation industry in India has emerged as one of the fastest growing industries in the country during the last three years. India is currently considered the third largest domestic civil aviation market in the world. Same time meteorological information plays an essential role for all sectors of the Aviation industry - airlines, airports, air traffic control and management for taking correct and timely decisions that makes navigation safe, efficient and cost effective.

Aircrafts fly in the atmosphere where most of the weather systems develop and decay. Information of important meteorological parameters related to the safety of aircraft such as atmospheric Pressure, Temperature, Wind direction and speed, Visibility, Runway Visual Range (RVR) and Cloud Height are needed for smooth operations of an aircraft from take off to the landing phase. It is therefore very essential that climatology of an airport is available as a ready reckoner to understand mean number of occurrences (frequencies) of various weather elements in different temporal scales which affect aircraft operations round the clock. Aeronautical Climatological Summary of an Airport provides this vital information. Aeronautical Climatological Summaries for various National and International Airports are being prepared and updated at regular interval. The publication is prepared on the pattern of WMO Models A, B, C, D, E and Table VI in accordance with the procedures laid down in Technical Regulations as per International Civil Aviation Organization (ICAO) standards. The details of these models are given in Appendix-1. The present publication has been prepared for **Gaya International Airport, Gaya** (Latitude 24° 45'N, Longitude 84° 57'E and Altitude 118m) using the meteorological data for the period 2017-2021.

The successful publication of this report is achieved by valuable guidance and constant encouragement by Sh. Sanjib Bandyopadhyay Sc 'G', Head RMC Kolkata and Sh. S.K. Patel, Met. B, OIC, AMS Gaya. The valuable contributions towards quality of work and keying in of huge volume of data were made by Sh. Raushan Kumar, S.A, Sh. Mukesh Kumar, S.A, Sh. Chandan Kumar, S.A, Sh. Vinod Sharma, Met. A along with other operational duty staff.

The entire work of this publication has been done by a group of officers and staff members led Dr. Sudeep Kumar. B. L, Scientist C, under the guidance of Shri. A.D. Tathe, Scientist E & Head, Climate Data Management and Services (CDMS) Group. Valuable contributions were made by Smt. S.H. Joshi, Met. A, Shri Pradeep Rajmane, Met. A and Smt. Reshma Pathan, Met. A. towards preparation of the summaries. I appreciate the help rendered by the entire team. I am hopeful that this publication will serve as a source of useful information to aviation services.

**K. S. Hosalikar**  
**Head CRS**

## CONTENTS

<b>Sn</b>	<b>Model name</b>	<b>Description</b>	<b>Pages</b>
<b>1</b>	<a href="#"><u>MODEL - A</u></a>	Runway Visual Range or Visibility and/or the height of the base of lowest cloud layer	1 - 12
<b>2</b>	<a href="#"><u>MODEL - B</u></a>	Visibility	13 - 24
<b>3</b>	<a href="#"><u>MODEL - C</u></a>	Height of base of the lowest cloud	25 - 36
<b>4</b>	<a href="#"><u>MODEL - D</u></a>	Wind direction and wind speed	37 - 132
<b>5</b>	<a href="#"><u>MODEL - E</u></a>	Temperature	133 - 144
<b>6</b>	<a href="#"><u>TABLE - VI</u></a>	Atmospheric pressure	145 - 156
<b>7</b>	<a href="#"><u>DIAGRAMS</u></a>	Low cloud, Total cloud, Visibility, Pressure and Temperature	157 - 163

## DESCRIPTION OF MODELS

Model type	Description
<b>MODEL A</b>	Monthly mean number of occurrences of runway visual range / visibility and/or the height of the base of lowest cloud layer (in metres), covering more than 4/8 th of the sky below specified values at the specified time.
<b>MODEL B</b>	Monthly mean number of visibility below specified values (in metres ) at the specified time.
<b>MODEL C</b>	Monthly mean number of occurrences of the height of the base (in metres) of the lowest cloud layer covering more than 4/8th of the sky below specified values at the specified time.
<b>MODEL D</b>	Monthly mean number of occurrences of concurrent wind direction (30 degree sector) and wind speed (knots) within specified ranges.
<b>MODEL E</b>	Monthly mean number of occurrences of surface (screen) temperature (°C) in ranges of 5 degrees of the specified time.
<b>TABLE VI</b>	Monthly mean atmospheric pressure (hPa) at the reference level / mean sea level (for low level stations) at standard times for surface synoptic observations.

**THE TERMS USED IN PUBLICATION WITH DESCRIPTION AND ITS UNITS.**

<b>S.N.</b>	<b>Terms</b>	<b>Description and Units</b>
<b>1</b>	Time	Time of observation in Universal Time Coordinated (UTC).
<b>2</b>	HS	The height of base of lowest cloud layer covering more than 4/8 of the sky (metres).
<b>3</b>	Visibility	Horizontal visibility (metres).
<b>4</b>	RVR	Runway Visual Range (metres).
<b>5</b>	Wind Direction	Direction of wind from true north (degrees).
<b>6</b>	Wind speed	The speed of wind (knots).
<b>7</b>	Pressure	Mean sea level pressure (hPa).
<b>8</b>	Temperature	Screen temperatures (degree Celsius).

**MONTH: JANUARY**

**MODEL : A**

Table: Mean number of occurrences of Runway Visual Range or Visibility and/or the height of the base of lowest cloud layer covering more than 4/8 th of the sky (HS), below specified values and time.

Time UTC	Runway Visual Range OR Visibility / HS (metres)								
	VIS<100	<200	<400	<800	<1500	<1500	<3000	<8000	TOTAL
	HS		<30	<60	<90	<150	<300	<600	
0	3.8	1.8	0.6	3.6		9.6	11.4	0.4	31.2
1	3.6	2.4	1.2	5.2		13.0	5.2	0.8	31.4
2	4.0	1.0	0.6	6.8		12.6	5.8	0.2	31.0
3	2.6	1.2	0.6	4.0	0.2	13.4	8.4	1.0	31.4
4	0.6	1.2	1.0	2.2	0.8	10.0	14.8	1.0	31.6
5		0.6	0.6	1.4	0.8	5.6	20.2	3.2	32.4
6			0.2	1.2		4.6	20.0	5.2	31.2
7				0.4	0.2	3.4	18.0	9.6	31.6
8				0.2	0.2	2.2	16.4	12.6	31.6
9				0.2		1.6	14.4	15.0	31.2
10				0.2		1.6	13.8	15.8	31.4
11				0.2		2.2	13.6	15.4	31.4
12				0.2		3.2	17.2	10.0	30.6
13		0.2		0.2		4.2	20.4	5.4	30.4
14		0.2		0.6		5.0	22.6	2.4	30.8
15			0.2	1.2		6.0	22.6	0.8	30.8
16	0.4	0.6	0.8	0.6		6.2	22.4		31.0
17	0.4	1.0	1.2	1.0		6.8	20.4		30.8
18	1.2	1.4	1.2	1.2		7.6	18.4		31.0
19	2.2	0.8	1.6	1.4		8.0	16.8		30.8
20	2.0	1.2	1.4	1.8		8.0	16.2	0.2	30.8
21	2.2	1.2	1.6	2.2		7.4	15.8	0.2	30.6
22	2.2	1.4	2.0	3.0		7.8	14.2	0.4	31.0
23	2.8	2.0	1.4	3.2		8.0	13.0	0.4	30.8
TOTAL	28.0	18.2	16.2	42.2	2.2	158.0	382.0	100.0	746.8

**MONTH: FEBRUARY**

**MODEL: A**

Table: Mean number of occurrences of Runway Visual Range or Visibility and/or the height of the base of lowest cloud layer covering more than 4/8 th of the sky (HS), below specified values and time.

Time UTC	Runway Visual Range OR Visibility / HS (metres)								
	VIS<100	<200	<400	<800	<1500	<1500	<3000	<8000	TOTAL
	HS		<30	<60	<90	<150	<300	<600	
0		0.6	0.4	0.4		7.0	19.6	0.4	28.4
1	0.2	0.4		1.6		11.2	14.0	1.0	28.4
2	0.4	0.2		1.0		10.6	14.8	1.0	28.0
3	0.2		0.2	0.2		8.6	17.2	2.0	28.4
4				0.2		3.4	19.2	5.0	27.8
5					0.4	0.6	17.2	10.6	28.8
6						0.2	12.2	15.8	28.2
7					0.2		6.6	21.2	28.0
8						0.2	4.8	22.6	27.6
9						0.2	2.8	25.2	28.2
10						0.2	2.6	25.0	27.8
11						0.2	3.8	24.0	28.0
12						0.2	6.0	22.2	28.4
13						0.2	10.2	17.8	28.2
14						0.2	16.0	11.6	27.8
15						0.4	18.8	9.0	28.2
16						0.4	23.4	4.8	28.6
17			0.2			0.8	23.4	4.0	28.4
18						2.2	23.6	3.0	28.8
19				0.2		2.4	23.6	2.0	28.2
20			0.2	0.2		2.6	23.6	1.8	28.4
21				0.4		3.0	23.8	1.4	28.6
22		0.2	0.2	0.2		3.6	23.2	1.0	28.4
23	0.2	0.2	0.4	0.4		5.2	21.0	1.0	28.4
TOTAL	1.0	1.6	1.6	4.8	0.6	63.6	371.4	233.4	678.0

**MONTH: MARCH**

**MODEL: A**

Table: Mean number of occurrences of Runway Visual Range or Visibility and/or the height of the base of lowest cloud layer covering more than 4/8 th of the sky (HS), below specified values and time.

Time UTC	Runway Visual Range OR Visibility / HS (metres)								
	VIS<100	<200	<400	<800	<1500	<1500	<3000	<8000	TOTAL
	HS		<30	<60	<90	<150	<300	<600	
0	0.4					1.4	24.0	5.4	31.2
1		0.2		0.2		3.0	19.8	8.0	31.2
2	0.2			0.4		2.8	18.0	9.6	31.0
3			0.2			2.2	16.0	12.8	31.2
4						0.8	12.0	18.2	31.0
5							6.6	24.6	31.2
6						0.4	3.6	27.4	31.4
7						0.2	2.2	28.6	31.0
8						0.4	1.6	27.6	29.6
9						0.2	1.4	27.6	29.2
10						0.2	1.2	27.8	29.2
11						0.2	1.2	28.2	29.6
12						0.2	1.8	28.8	30.8
13				0.2		0.2	2.8	27.6	30.8
14						0.2	7.4	23.6	31.2
15						0.2	10.6	20.4	31.2
16						0.2	14.0	17.0	31.2
17			0.2			0.2	17.0	13.8	31.2
18						0.2	20.0	10.4	30.6
19						0.2	22.2	8.6	31.0
20						0.2	22.2	8.6	31.0
21			0.2			0.2	22.8	8.0	31.2
22						0.8	23.8	6.8	31.4
23				0.2		0.8	24.8	5.6	31.4
TOTAL	0.6	0.2	0.6	1.0		15.4	297.0	425.0	739.8



**MONTH: APRIL**

**MODEL: A**

Table: Mean number of occurrences of Runway Visual Range or Visibility and/or the height of the base of lowest cloud layer covering more than 4/8 th of the sky (HS), below specified values and time.

Time UTC	Runway Visual Range OR Visibility / HS (metres)								
	VIS<100	<200	<400	<800	<1500	<1500	<3000	<8000	TOTAL
	HS		<30	<60	<90	<150	<300	<600	
0							19.6	10.2	29.8
1	10.4		0.2			0.2	19.2	10.0	40.0
2			0.2				16.8	12.4	29.4
3							13.2	16.4	29.6
4							8.0	21.4	29.4
5							3.4	26.2	29.6
6							1.6	28.0	29.6
7							0.8	28.2	29.0
8							1.0	28.0	29.0
9							0.8	27.6	28.4
10							0.8	28.0	28.8
11							0.8	28.6	29.4
12							0.4	29.2	29.6
13							1.0	28.6	29.6
14							2.4	27.2	29.6
15							7.0	23.0	30.0
16							9.4	20.6	30.0
17							11.4	18.6	30.0
18							14.6	15.0	29.6
19							15.4	14.2	29.6
20							16.0	14.0	30.0
21							15.8	14.0	29.8
22							17.4	12.0	29.4
23							18.8	10.2	29.0
TOTAL	10.4		0.4			0.2	215.6	491.6	718.2

**MONTH: MAY**

**MODEL: A**

Table: Mean number of occurrences of Runway Visual Range or Visibility and/or the height of the base of lowest cloud layer covering more than 4/8 th of the sky (HS), below specified values and time.

Time UTC	Runway Visual Range OR Visibility / HS (metres)								
	VIS<100	<200	<400	<800	<1500	<1500	<3000	<8000	TOTAL
	HS		<30	<60	<90	<150	<300	<600	
0						0.4	12.4	18.0	30.8
1						0.2	11.8	19.2	31.2
2							9.8	21.0	30.8
3							6.4	24.8	31.2
4							2.2	28.8	31.0
5							1.0	29.6	30.6
6							0.8	30.2	31.0
7							0.4	30.2	30.6
8						0.2	0.8	29.4	30.4
9							1.0	29.8	30.8
10							1.2	30.0	31.2
11							1.6	28.8	30.4
12						0.2	0.4	29.8	30.4
13						0.2	0.8	29.2	30.2
14							1.4	29.6	31.0
15							3.4	27.8	31.2
16							4.8	26.2	31.0
17							6.4	24.4	30.8
18							9.4	21.8	31.2
19						0.2	10.0	20.8	31.0
20						0.2	10.2	21.0	31.4
21						0.2	10.6	20.2	31.0
22						0.2	11.4	19.6	31.2
23						0.2	11.6	18.6	30.4
TOTAL						2.2	129.8	608.8	740.8

**MONTH: JUNE**

**MODEL: A**

Table: Mean number of occurrences of Runway Visual Range or Visibility and/or the height of the base of lowest cloud layer covering more than 4/8 th of the sky (HS), below specified values and time.

Time UTC	Runway Visual Range OR Visibility / HS (metres)								
	VIS<100	<200	<400	<800	<1500	<1500	<3000	<8000	TOTAL
	HS		<30	<60	<90	<150	<300	<600	
0				0.2		0.2	12.6	18.6	31.6
1						0.8	11.4	18.8	31.0
2						0.6	9.4	20.8	30.8
3							5.4	25.6	31.0
4			0.2				4.0	26.6	30.8
5							2.2	27.6	29.8
6							2.4	27.8	30.2
7						0.2	2.2	28.0	30.4
8							2.4	28.2	30.6
9						0.4	1.8	27.6	29.8
10							2.6	28.2	30.8
11						0.2	2.6	28.4	31.2
12						0.2	3.0	27.2	30.4
13						0.2	3.4	27.2	30.8
14						0.2	5.4	24.8	30.4
15						0.2	6.2	23.4	29.8
16							8.0	23.0	31.0
17							9.6	21.2	30.8
18							10.8	19.6	30.4
19							11.2	19.2	30.4
20							11.8	18.2	30.0
21							11.8	18.2	30.0
22							13.0	17.0	30.0
23							13.6	16.6	30.2
TOTAL			0.2	0.2		3.2	166.8	561.8	732.2

**MONTH: JULY**

**MODEL: A**

Table: Mean number of occurrences of Runway Visual Range or Visibility and/or the height of the base of lowest cloud layer covering more than 4/8 th of the sky (HS), below specified values and time.

Time UTC	Runway Visual Range OR Visibility / HS (metres)								
	VIS<100	<200	<400	<800	<1500	<1500	<3000	<8000	TOTAL
	HS		<30	<60	<90	<150	<300	<600	
0						0.6	17.6	15.0	33.2
1						0.4	16.2	16.2	32.8
2							13.2	19.4	32.6
3						0.2	7.8	23.8	31.8
4							6.4	26.0	32.4
5						0.4	5.2	26.6	32.2
6						0.4	4.0	27.2	31.6
7						0.4	3.6	27.2	31.2
8			0.2			0.2	4.0	27.2	31.6
9				0.2	0.2		4.4	27.2	32.0
10			0.2				4.8	27.0	32.0
11				0.2			5.0	26.4	31.6
12						0.2	3.8	27.4	31.4
13						0.2	5.4	26.6	32.2
14							7.8	24.8	32.6
15							11.4	20.4	31.8
16						0.2	12.2	19.4	31.8
17							13.8	18.0	31.8
18							14.8	17.2	32.0
19							15.2	16.8	32.0
20							15.4	16.2	31.6
21							16.2	15.6	31.8
22							17.8	14.0	31.8
23							18.4	13.4	31.8
TOTAL			0.4	0.4	0.2	3.2	244.4	519.0	767.6

**MONTH: AUGUST**

**MODEL: A**

Table: Mean number of occurrences of Runway Visual Range or Visibility and/or the height of the base of lowest cloud layer covering more than 4/8 th of the sky (HS), below specified values and time.

Time UTC	Runway Visual Range OR Visibility / HS (metres)								
	VIS<100	<200	<400	<800	<1500	<1500	<3000	<8000	TOTAL
	HS		<30	<60	<90	<150	<300	<600	
0			0.2				21.2	12.0	33.4
1						0.4	18.4	14.6	33.4
2						0.2	16.8	16.6	33.6
3						0.2	10.6	22.4	33.2
4						0.4	7.0	25.6	33.0
5							4.0	28.2	32.2
6				0.2			3.2	28.4	31.8
7							3.6	28.2	31.8
8							3.6	27.4	31.0
9						0.4	3.0	26.8	30.2
10							3.2	27.6	30.8
11						0.6	3.0	28.2	31.8
12							3.2	29.4	32.6
13				0.2			4.0	28.8	33.0
14						0.2	8.6	23.0	31.8
15							12.0	20.4	32.4
16							13.8	19.2	33.0
17			0.2				16.0	16.8	33.0
18							18.0	15.0	33.0
19							18.6	14.4	33.0
20			0.2				18.8	13.6	32.6
21							19.4	13.6	33.0
22							19.8	13.0	32.8
23							21.0	12.2	33.2
TOTAL			0.6	0.4		2.4	270.8	505.4	779.6

**MONTH: SEPTEMBER**

**MODEL: A**

Table: Mean number of occurrences of Runway Visual Range or Visibility and/or the height of the base of lowest cloud layer covering more than 4/8 th of the sky (HS), below specified values and time.

Time UTC	Runway Visual Range OR Visibility / HS (metres)								
	VIS<100	<200	<400	<800	<1500	<1500	<3000	<8000	TOTAL
	HS		<30	<60	<90	<150	<300	<600	
0						0.4	22.2	7.8	30.4
1						1.2	20.4	9.4	31.0
2						1.0	18.4	11.6	31.0
3						0.2	10.8	19.6	30.6
4							6.4	23.8	30.2
5							3.8	26.6	30.4
6							2.8	26.8	29.6
7							3.0	27.2	30.2
8							2.6	26.8	29.4
9							2.8	27.4	30.2
10						0.2	3.2	27.0	30.4
11							4.2	26.2	30.4
12							4.2	26.6	30.8
13							4.6	26.2	30.8
14							7.6	23.2	30.8
15							10.2	21.0	31.2
16							12.6	18.4	31.0
17							14.4	16.6	31.0
18			0.2				17.2	13.8	31.2
19							17.4	12.8	30.2
20						0.2	18.2	12.2	30.6
21						0.2	19.0	11.4	30.6
22						0.2	20.2	10.0	30.4
23						0.2	21.4	9.0	30.6
TOTAL			0.2			3.8	267.6	461.4	733.0

**MONTH: OCTOBER**

**MODEL: A**

Table: Mean number of occurrences of Runway Visual Range or Visibility and/or the height of the base of lowest cloud layer covering more than 4/8 th of the sky (HS), below specified values and time.

Time UTC	Runway Visual Range OR Visibility / HS (metres)								
	VIS<100	<200	<400	<800	<1500	<1500	<3000	<8000	TOTAL
	HS		<30	<60	<90	<150	<300	<600	
0			0.2	0.6		3.0	20.0	0.8	24.6
1			0.2	1.4		6.4	16.0	1.0	25.0
2				0.2		5.6	16.4	2.2	24.4
3						3.2	16.0	5.8	25.0
4						1.0	13.2	11.0	25.2
5							6.4	18.4	24.8
6							3.2	21.4	24.6
7							1.6	22.6	24.2
8							1.8	23.0	24.8
9							1.6	22.6	24.2
10						0.2	1.6	23.2	25.0
11						0.2	2.2	22.4	24.8
12							4.0	21.2	25.2
13							7.6	16.6	24.2
14							13.8	11.2	25.0
15							16.4	8.6	25.0
16							18.0	7.2	25.2
17							20.6	4.4	25.0
18							21.6	3.2	24.8
19						0.2	22.4	2.6	25.2
20						0.2	22.4	2.4	25.0
21						0.6	22.8	1.4	24.8
22				0.2		0.8	22.6	0.8	24.4
23		0.2		0.4		1.2	21.6	1.2	24.6
TOTAL		0.2	0.4	2.8		22.6	313.8	255.2	595.0

**MONTH: NOVEMBER**

**MODEL: A**

Table: Mean number of occurrences of Runway Visual Range or Visibility and/or the height of the base of lowest cloud layer covering more than 4/8 th of the sky (HS), below specified values and time.

Time UTC	Runway Visual Range OR Visibility / HS (metres)								
	VIS<100	<200	<400	<800	<1500	<1500	<3000	<8000	TOTAL
	HS		<30	<60	<90	<150	<300	<600	
0	0.2	0.2	0.2	0.2		6.4	16.4	0.2	23.8
1	0.2	0.4	0.4	1.8		10.4	10.6	0.2	24.0
2		0.2	0.2	1.0		11.0	10.6	0.2	23.2
3			0.2	0.4	0.4	9.2	13.6	0.6	24.4
4				0.2	0.4	3.8	19.0	1.0	24.4
5					0.2	1.2	18.2	4.6	24.2
6						1.0	13.6	9.0	23.6
7						0.6	10.6	12.2	23.4
8			0.2			0.2	9.0	14.2	23.6
9	14.4					0.2	7.0	17.0	38.6
10	17.2					0.6	6.2	16.8	40.8
11	17.0					0.8	7.4	15.4	40.6
12						1.0	13.4	9.2	23.6
13						1.2	17.4	4.2	22.8
14						1.4	20.8	1.6	23.8
15						1.4	21.6	1.0	24.0
16				0.2		1.4	21.6	0.8	24.0
17		0.2				1.4	22.0	0.4	24.0
18	0.2					2.4	21.2	0.2	24.0
19	0.2			0.2		2.6	20.8		23.8
20	0.2			0.2		2.8	20.0		23.2
21	0.2		0.4			3.6	19.6		23.8
22	0.2	0.2	0.2			4.2	19.2		24.0
23	0.4	0.2	0.2			4.8	18.0		23.6
TOTAL	50.4	1.4	2.0	4.2	1.0	73.6	377.8	108.8	619.2



**MONTH: DECEMBER**

**MODEL: A**

Table: Mean number of occurrences of Runway Visual Range or Visibility and/or the height of the base of lowest cloud layer covering more than 4/8 th of the sky (HS), below specified values and time.

Time UTC	Runway Visual Range OR Visibility / HS (metres)								
	VIS<100	<200	<400	<800	<1500	<1500	<3000	<8000	TOTAL
	HS		<30	<60	<90	<150	<300	<600	
0	1.0	0.8	0.4	3.2		12.2	13.4		31.0
1	0.8	0.6	1.4	6.0		13.8	7.2	0.4	30.2
2	1.4	0.2	0.4	6.0		15.0	7.4	0.6	31.0
3	1.4	0.2	0.2	2.6	0.2	16.4	10.0	1.0	32.0
4	0.6	0.8		0.6		13.6	14.4	1.8	31.8
5		0.6	0.2	0.4		7.2	22.0	1.8	32.2
6				0.6		4.2	23.0	4.8	32.6
7				0.2	0.2	2.8	22.0	6.8	32.0
8						2.4	19.8	9.0	31.2
9						1.8	18.0	11.8	31.6
10						1.6	17.8	12.0	31.4
11				0.2		2.4	19.2	10.0	31.8
12				0.2		4.4	22.6	4.4	31.6
13						5.0	24.0	2.8	31.8
14						5.4	24.2	1.0	30.6
15				0.2		6.0	24.0	0.8	31.0
16	0.2			1.0		5.8	23.6	0.6	31.2
17	0.6	0.2	0.2	1.6		5.4	22.8	0.4	31.2
18	1.0	0.2	0.6	0.8		7.6	20.8	0.2	31.2
19	1.2	0.2	0.4	0.8		8.6	19.8	0.2	31.2
20	1.2	0.2	0.8	1.0		8.4	19.0		30.6
21	1.2	0.4	0.4	2.0		8.2	18.8		31.0
22	1.2	0.6	0.2	1.8		10.0	16.4		30.2
23	1.2	0.4	0.2	1.8		10.8	15.6		30.0
TOTAL	13.0	5.4	5.4	31.0	0.4	179.0	445.8	70.4	750.4

**MONTH : JANUARY**

**MODEL : B**

TABLE: Mean number of occurrences of visibility below specified values and time.

Time UTC	VISIBILITY (metres)								
	<200	<400	<600	<800	<1500	<3000	<5000	<8000	TOTAL
0	5.6	0.6	1.6	2.0	9.6	11.4			30.8
1	6.0	1.2	1.4	3.8	13.0	5.2			30.6
2	5.0	0.6	2.2	4.6	12.6	5.8			30.8
3	3.8	0.6	0.6	3.4	13.6	8.4	0.6		31.0
4	1.8	1.0	1.2	1.0	10.6	14.8	0.6		31.0
5	0.6	0.6	0.4	1.0	6.0	20.2	1.8		30.6
6		0.2		1.2	4.6	20.0	4.4		30.4
7				0.4	3.6	18.0	8.0	0.4	30.4
8				0.2	2.4	16.4	10.8	1.2	31.0
9				0.2	1.6	14.4	12.8	1.8	30.8
10				0.2	1.6	13.8	13.6	1.8	31.0
11				0.2	2.2	13.6	13.6	1.4	31.0
12				0.2	3.2	17.2	10.0		30.6
13	0.2			0.2	4.2	20.4	5.4		30.4
14	0.2			0.6	5.0	22.6	2.4		30.8
15		0.2	0.4	0.8	6.0	22.6	0.8		30.8
16	1.0	0.8	0.2	0.4	6.2	22.4			31.0
17	1.6	1.2	0.2	0.8	6.8	20.4			31.0
18	2.6	1.2	0.4	0.8	7.6	18.4			31.0
19	3.0	1.6	0.4	1.0	8.0	16.8			30.8
20	3.2	1.4	0.6	1.2	8.0	16.2	0.2		30.8
21	3.4	1.6	0.8	1.4	7.4	15.8	0.2		30.6
22	3.6	2.0	2.0	1.0	7.8	14.2	0.2		30.8
23	4.8	1.4	1.8	1.4	8.0	13.0	0.2		30.6
TOTAL	46.4	16.2	14.2	28.0	159.6	382.0	85.6	6.6	738.6

**MONTH : FEBRUARY**

**MODEL : B**

TABLE: Mean number of occurrences of visibility below specified values and time.

Time UTC	VISIBILITY (metres)								
	<200	<400	<600	<800	<1500	<3000	<5000	<8000	TOTAL
0	0.6	0.4		0.4	7.0	19.6	0.2		28.2
1	0.6		0.6	1.0	11.2	14.0	0.6		28.0
2	0.6		0.2	0.8	10.6	14.8	0.8		27.8
3	0.2	0.2		0.2	8.6	17.2	1.8		28.2
4			0.2		3.4	19.2	4.8	0.2	27.8
5					1.0	17.2	9.4	0.6	28.2
6					0.2	12.2	13.0	2.8	28.2
7					0.2	6.6	15.4	5.6	27.8
8					0.2	4.8	14.2	8.2	27.4
9					0.2	2.8	14.6	10.4	28.0
10					0.2	2.6	14.0	10.8	27.6
11					0.2	3.8	14.8	8.8	27.6
12					0.2	6.0	15.2	6.6	28.0
13					0.2	10.2	16.2	1.4	28.0
14					0.2	16.0	11.6		27.8
15					0.4	18.8	8.8		28.0
16					0.4	23.4	4.4		28.2
17		0.2			0.8	23.4	3.6		28.0
18					2.2	23.6	2.4		28.2
19				0.2	2.4	23.6	1.6		27.8
20		0.2		0.2	2.6	23.6	1.4		28.0
21				0.4	3.0	23.8	1.0		28.2
22	0.2	0.2		0.2	3.6	23.2	0.8		28.2
23	0.4	0.4	0.2	0.2	5.2	21.0	0.8		28.2
TOTAL	2.6	1.6	1.2	3.6	64.2	371.4	171.4	55.4	671.4

**MONTH : MARCH**

**MODEL : B**

TABLE: Mean number of occurrences of visibility below specified values and time.

Time UTC	VISIBILITY (metres)								
	<200	<400	<600	<800	<1500	<3000	<5000	<8000	TOTAL
0	0.4				1.4	24.0	5.0		30.8
1	0.4		0.2		3.0	19.8	7.4		30.8
2	0.2		0.2	0.2	2.8	18.0	9.2		30.6
3		0.2			2.2	16.0	12.0	0.2	30.6
4					0.8	12.0	16.8	1.0	30.6
5						6.6	17.8	6.4	30.8
6					0.4	3.6	14.6	12.4	31.0
7					0.2	2.2	11.2	17.2	30.8
8					0.4	1.6	8.2	19.4	29.6
9					0.2	1.4	7.4	20.0	29.0
10					0.2	1.2	7.4	20.2	29.0
11					0.2	1.2	8.2	19.8	29.4
12					0.2	1.8	13.0	15.6	30.6
13			0.2		0.2	2.8	18.6	8.8	30.6
14					0.2	7.4	21.8	1.6	31.0
15					0.2	10.6	19.8	0.4	31.0
16					0.2	14.0	16.4	0.4	31.0
17					0.2	17.0	13.4	0.2	30.8
18					0.2	20.0	10.4		30.6
19					0.2	22.2	8.6		31.0
20					0.2	22.2	8.4		30.8
21		0.2			0.2	22.8	7.8		31.0
22					0.8	23.8	6.4		31.0
23				0.2	0.8	24.8	5.2		31.0
TOTAL	1.0	0.4	0.6	0.4	15.4	297.0	275.0	143.6	733.4

**MONTH : APRIL**

**MODEL : B**

TABLE: Mean number of occurrences of visibility below specified values and time.

Time UTC	VISIBILITY (metres)								
	<200	<400	<600	<800	<1500	<3000	<5000	<8000	TOTAL
0						19.6	10.0		29.6
1		0.2			0.2	19.2	9.8	0.2	29.6
2		0.2				16.8	12.2	0.2	29.4
3						13.2	15.6	0.8	29.6
4						8.0	19.4	2.0	29.4
5						3.4	19.8	6.4	29.6
6						1.6	17.2	10.8	29.6
7						0.8	14.4	13.8	29.0
8						1.0	12.6	15.4	29.0
9						0.8	10.8	16.8	28.4
10						0.8	10.6	17.4	28.8
11						0.8	11.8	16.8	29.4
12						0.4	15.8	13.4	29.6
13						1.0	21.2	7.4	29.6
14						2.4	25.2	2.0	29.6
15						7.0	22.0	1.0	30.0
16						9.4	20.0	0.6	30.0
17						11.4	18.4	0.2	30.0
18						14.6	14.8	0.2	29.6
19						15.4	14.0	0.2	29.6
20						16.0	13.8	0.2	30.0
21						15.8	13.8	0.2	29.8
22						17.4	11.8	0.2	29.4
23						18.8	10.2		29.0
TOTAL		0.4			0.2	215.6	365.2	126.2	707.6

**MONTH : MAY**

**MODEL : B**

TABLE: Mean number of occurrences of visibility below specified values and time.

Time UTC	VISIBILITY (metres)								
	<200	<400	<600	<800	<1500	<3000	<5000	<8000	TOTAL
0					0.4	12.4	17.8		30.6
1					0.2	11.8	19.0		31.0
2						9.8	20.4	0.4	30.6
3						6.4	23.0	1.4	30.8
4						2.2	25.4	3.0	30.6
5						1.0	23.0	6.6	30.6
6						0.8	20.6	9.4	30.8
7						0.4	15.6	14.4	30.4
8					0.2	0.8	12.6	16.6	30.2
9						1.0	12.0	17.6	30.6
10						1.2	11.8	17.8	30.8
11						1.6	12.0	16.8	30.4
12					0.2	0.4	15.6	14.2	30.4
13					0.2	0.8	23.4	5.8	30.2
14						1.4	27.0	2.6	31.0
15						3.4	26.6	1.0	31.0
16						4.8	25.4	0.6	30.8
17						6.4	24.0	0.2	30.6
18						9.4	21.2	0.2	30.8
19					0.2	10.0	20.4	0.2	30.8
20					0.2	10.2	20.4	0.2	31.0
21					0.2	10.6	19.8	0.2	30.8
22					0.2	11.4	19.4		31.0
23					0.2	11.6	18.2	0.2	30.2
TOTAL					2.2	129.8	474.6	129.4	736.0

**MONTH : JUNE**

**MODEL : B**

TABLE: Mean number of occurrences of visibility below specified values and time.

Time UTC	VISIBILITY (metres)								
	<200	<400	<600	<800	<1500	<3000	<5000	<8000	TOTAL
0				0.2	0.2	12.6	17.0		30.0
1					0.8	11.4	16.6	0.4	29.2
2					0.6	9.4	18.6	0.8	29.4
3						5.4	22.2	2.0	29.6
4		0.2				4.0	21.8	3.4	29.4
5						2.2	20.2	7.0	29.4
6						2.4	17.4	9.4	29.2
7					0.2	2.2	15.2	11.6	29.2
8						2.4	13.8	13.4	29.6
9					0.4	1.8	13.6	13.6	29.4
10						2.6	14.8	12.4	29.8
11					0.2	2.6	15.6	11.2	29.6
12					0.2	3.0	18.0	8.4	29.6
13					0.2	3.4	21.6	4.4	29.6
14					0.2	5.4	21.8	2.0	29.4
15					0.2	6.2	21.8	1.0	29.2
16						8.0	21.8	0.2	30.0
17						9.6	20.2		29.8
18						10.8	19.0		29.8
19						11.2	18.6		29.8
20						11.8	17.6		29.4
21						11.8	17.6		29.4
22						13.0	16.4		29.4
23						13.6	16.0		29.6
TOTAL		0.2		0.2	3.2	166.8	437.2	101.2	708.8

**MONTH : JULY**

**MODEL : B**

TABLE: Mean number of occurrences of visibility below specified values and time.

Time UTC	VISIBILITY (metres)								
	<200	<400	<600	<800	<1500	<3000	<5000	<8000	TOTAL
0					0.6	17.6	12.8		31.0
1					0.4	16.2	14.2		30.8
2						13.2	17.2	0.6	31.0
3					0.2	7.8	21.0	1.8	30.8
4						6.4	20.0	4.4	30.8
5					0.4	5.2	18.0	6.8	30.4
6					0.4	4.0	16.2	10.0	30.6
7					0.4	3.6	14.4	12.0	30.4
8		0.2			0.2	4.0	13.0	13.4	30.8
9				0.2	0.2	4.4	12.4	13.8	31.0
10		0.2				4.8	12.8	13.0	30.8
11				0.2		5.0	14.4	11.2	30.8
12					0.2	3.8	19.2	7.4	30.6
13					0.2	5.4	22.0	3.2	30.8
14						7.8	22.0	1.2	31.0
15						11.4	18.4	0.8	30.6
16					0.2	12.2	18.2	0.4	31.0
17						13.8	16.8	0.2	30.8
18						14.8	16.0		30.8
19						15.2	15.6	0.2	31.0
20						15.4	15.2	0.2	30.8
21						16.2	14.8		31.0
22						17.8	13.0		30.8
23						18.4	12.6		31.0
TOTAL		0.4		0.4	3.4	244.4	390.2	100.6	739.4



**MONTH : AUGUST**

**MODEL : B**

TABLE: Mean number of occurrences of visibility below specified values and time.

Time UTC	VISIBILITY (metres)								
	<200	<400	<600	<800	<1500	<3000	<5000	<8000	TOTAL
0		0.2				21.2	9.2		30.6
1					0.4	18.4	11.6		30.4
2					0.2	16.8	13.6	0.2	30.8
3					0.2	10.6	18.8	1.2	30.8
4					0.4	7.0	19.6	3.6	30.6
5						4.0	20.4	6.2	30.6
6			0.2			3.2	19.0	8.2	30.6
7						3.6	15.8	11.0	30.4
8						3.6	16.2	10.4	30.2
9					0.4	3.0	16.4	10.2	30.0
10						3.2	16.6	10.4	30.2
11					0.6	3.0	18.0	9.2	30.8
12						3.2	20.8	7.0	31.0
13				0.2		4.0	25.2	1.6	31.0
14					0.2	8.6	21.8		30.6
15						12.0	18.8		30.8
16						13.8	17.0		30.8
17		0.2				16.0	14.6		30.8
18						18.0	12.6		30.6
19						18.6	12.4		31.0
20		0.2				18.8	11.8		30.8
21						19.4	11.6		31.0
22						19.8	11.2		31.0
23						21.0	10.0		31.0
TOTAL		0.6	0.2	0.2	2.4	270.8	383.0	79.2	736.4

**MONTH : SEPTEMBER**

**MODEL : B**

TABLE: Mean number of occurrences of visibility below specified values and time.

Time UTC	VISIBILITY (metres)								
	<200	<400	<600	<800	<1500	<3000	<5000	<8000	TOTAL
0					0.4	22.2	7.0		29.6
1					1.2	20.4	8.4		30.0
2					1.0	18.4	10.4		29.8
3					0.2	10.8	17.8	1.0	29.8
4						6.4	20.4	3.0	29.8
5						3.8	19.2	7.0	30.0
6						2.8	18.0	8.4	29.2
7						3.0	14.4	12.0	29.4
8						2.6	13.0	13.2	28.8
9						2.8	14.0	12.6	29.4
10					0.2	3.2	15.0	11.0	29.4
11						4.2	15.4	9.8	29.4
12						4.2	18.0	7.4	29.6
13						4.6	23.8	1.2	29.6
14						7.6	21.8	0.2	29.6
15						10.2	19.4		29.6
16						12.6	17.4		30.0
17						14.4	15.6		30.0
18		0.2				17.2	12.6		30.0
19						17.4	12.2		29.6
20					0.2	18.2	11.4		29.8
21					0.2	19.0	10.8		30.0
22					0.2	20.2	9.2		29.6
23					0.2	21.4	8.2		29.8
TOTAL		0.2			3.8	267.6	353.4	86.8	711.8

**MONTH : OCTOBER**

**MODEL : B**

TABLE: Mean number of occurrences of visibility below specified values and time.

Time UTC	VISIBILITY (metres)								
	<200	<400	<600	<800	<1500	<3000	<5000	<8000	TOTAL
0		0.2	0.2	0.4	3.0	20.0	0.4		24.2
1		0.2	0.2	1.2	6.4	16.0	0.6		24.6
2				0.2	5.6	16.4	1.6		23.8
3					3.2	16.0	4.8	0.4	24.4
4					1.0	13.2	9.8	0.8	24.8
5						6.4	16.4	2.0	24.8
6						3.2	17.6	3.8	24.6
7						1.6	17.0	5.6	24.2
8						1.8	15.2	7.6	24.6
9						1.6	15.4	7.2	24.2
10					0.2	1.6	15.8	7.2	24.8
11					0.2	2.2	17.0	5.0	24.4
12						4.0	20.2	0.6	24.8
13						7.6	16.2		23.8
14						13.8	10.8		24.6
15						16.4	8.2		24.6
16						18.0	6.6		24.6
17						20.6	4.0		24.6
18						21.6	2.6		24.2
19					0.2	22.4	2.0		24.6
20					0.2	22.4	1.8		24.4
21					0.6	22.8	1.2		24.6
22				0.2	0.8	22.6	0.8		24.4
23	0.2			0.4	1.2	21.6	0.8		24.2
TOTAL	0.2	0.4	0.4	2.4	22.6	313.8	206.8	40.2	586.8

**MONTH : NOVEMBER**

**MODEL : B**

TABLE: Mean number of occurrences of visibility below specified values and time.

Time UTC	VISIBILITY (metres)								
	<200	<400	<600	<800	<1500	<3000	<5000	<8000	TOTAL
0	0.4	0.2	0.2		6.4	16.4		0.2	23.8
1	0.6	0.4	0.6	1.2	10.4	10.6			23.8
2	0.2	0.2	0.2	0.8	11.0	10.6	0.2		23.2
3		0.2	0.2	0.2	9.4	13.6	0.2	0.2	24.0
4				0.2	4.2	19.0	0.6		24.0
5					1.4	18.2	4.4		24.0
6					1.0	13.6	9.0		23.6
7					0.6	10.6	11.2	1.0	23.4
8		0.2			0.2	9.0	12.6	1.6	23.6
9					0.2	7.0	14.2	2.6	24.0
10					0.6	6.2	14.2	2.6	23.6
11					0.8	7.4	14.8	0.6	23.6
12					1.0	13.4	9.2		23.6
13					1.2	17.4	4.2		22.8
14					1.4	20.8	1.6		23.8
15					1.4	21.6	1.0		24.0
16			0.2		1.4	21.6	0.8		24.0
17	0.2				1.4	22.0	0.2	0.2	24.0
18	0.2				2.4	21.2	0.2		24.0
19	0.2		0.2		2.6	20.8			23.8
20	0.2		0.2		2.8	20.0			23.2
21	0.2	0.4			3.6	19.6			23.8
22	0.4	0.2			4.2	19.2			24.0
23	0.6	0.2			4.8	18.0			23.6
TOTAL	3.2	2.0	1.8	2.4	74.4	377.8	98.6	9.0	569.2

**MONTH : DECEMBER**

**MODEL : B**

TABLE: Mean number of occurrences of visibility below specified values and time.

Time UTC	VISIBILITY (metres)								
	<200	<400	<600	<800	<1500	<3000	<5000	<8000	TOTAL
0	1.8	0.4	2.2	1.0	12.2	13.4			31.0
1	1.6	1.4	2.4	3.6	13.8	7.2			30.0
2	1.6	0.4	2.4	3.6	15.0	7.4			30.4
3	1.6	0.2	0.2	2.4	16.6	10.0			31.0
4	1.4		0.2	0.4	13.6	14.4	0.2		30.2
5	0.6	0.2	0.4		7.2	22.0	0.4		30.8
6			0.4	0.2	4.2	23.0	2.6	0.2	30.6
7				0.2	3.0	22.0	5.6		30.8
8					2.4	19.8	8.4		30.6
9					1.8	18.0	11.0		30.8
10					1.6	17.8	10.8	0.4	30.6
11			0.2		2.4	19.2	8.8	0.4	31.0
12			0.2		4.4	22.6	3.4		30.6
13					5.0	24.0	2.0		31.0
14	0.2				5.4	24.2	0.8		30.6
15			0.2		6.0	24.0	0.6		30.8
16	0.2			1.0	5.8	23.6	0.4		31.0
17	0.8	0.2	0.6	1.0	5.4	22.8	0.2		31.0
18	1.2	0.6	0.4	0.4	7.6	20.8			31.0
19	1.4	0.4	0.4	0.4	8.6	19.8			31.0
20	1.4	0.8	0.2	0.8	8.4	19.0			30.6
21	1.6	0.4	0.8	1.2	8.2	18.8			31.0
22	1.8	0.2	1.0	0.8	10.0	16.4			30.2
23	1.6	0.2	1.0	0.8	10.8	15.6			30.0
TOTAL	18.8	5.4	13.2	17.8	179.4	445.8	55.2	1.0	736.6

**MONTH : JANUARY**

**MODEL : C**

TABLE: Mean number of occurrences of the height of the base of the lowest cloud layer (metres) covering more than 4/8 of the sky below specified values and time.

Time (UTC)	Height of the base of the lowest cloud layer (metres)						
	<30	<60	<90	<150	<300	<450	TOTAL
0							
1							
2							
3						0.2	0.2
4						0.2	0.2
5						0.2	0.2
6						0.2	0.2
7						0.2	0.2
8							
9							
10						0.2	0.2
11						0.2	0.2
12							
13							
14							
15							
16							
17							
18							
19							
20							
21							
22							
23							
TOTAL						1.4	1.4

**MONTH : FEBRUARY**

**MODEL : C**

TABLE: Mean number of occurrences of the height of the base of the lowest cloud layer (metres) covering more than 4/8 of the sky below specified values and time.

Time (UTC)	Height of the base of the lowest cloud layer (metres)						
	<30	<60	<90	<150	<300	<450	TOTAL
0							
1							
2							
3							
4							
5							
6							
7							
8							
9							
10							
11							
12							
13							
14							
15							
16							
17							
18							
19							
20							
21							
22							
23							
TOTAL							

**MONTH : MARCH**

**MODEL : C**

TABLE: Mean number of occurrences of the height of the base of the lowest cloud layer (metres) covering more than 4/8 of the sky below specified values and time.

Time (UTC)	Height of the base of the lowest cloud layer (metres)						
	<30	<60	<90	<150	<300	<450	TOTAL
0							
1							
2							
3							
4							
5							
6							
7							
8							
9							
10							
11							
12							
13							
14							
15							
16							
17							
18							
19							
20							
21							
22							
23							
TOTAL							



**MONTH : APRIL**

**MODEL : C**

TABLE: Mean number of occurrences of the height of the base of the lowest cloud layer (metres) covering more than 4/8 of the sky below specified values and time.

<b>Time (UTC)</b>	<b>Height of the base of the lowest cloud layer (metres)</b>						
	<30	<60	<90	<150	<300	<450	TOTAL
0							
1							
2							
3							
4							
5							
6							
7							
8							
9							
10							
11							
12							
13							
14							
15							
16							
17							
18							
19							
20							
21							
22							
23							
TOTAL							

**MONTH : MAY**

**MODEL : C**

TABLE: Mean number of occurrences of the height of the base of the lowest cloud layer (metres) covering more than 4/8 of the sky below specified values and time.

Time (UTC)	Height of the base of the lowest cloud layer (metres)						
	<30	<60	<90	<150	<300	<450	TOTAL
0							
1							
2							
3							
4							
5							
6							
7							
8							
9							
10							
11							
12							
13							
14							
15							
16							
17							
18							
19							
20							
21							
22							
23							
TOTAL							

**MONTH : JUNE**

**MODEL : C**

TABLE: Mean number of occurrences of the height of the base of the lowest cloud layer (metres) covering more than 4/8 of the sky below specified values and time.

Time (UTC)	Height of the base of the lowest cloud layer (metres)						
	<30	<60	<90	<150	<300	<450	TOTAL
0							
1							
2							
3							
4							
5							
6							
7							
8							
9							
10							
11							
12							
13							
14							
15							
16							
17							
18							
19							
20							
21							
22							
23							
TOTAL							

**MONTH : JULY**

**MODEL : C**

TABLE: Mean number of occurrences of the height of the base of the lowest cloud layer (metres) covering more than 4/8 of the sky below specified values and time.

Time (UTC)	Height of the base of the lowest cloud layer (metres)						
	<30	<60	<90	<150	<300	<450	TOTAL
0							
1							
2							
3							
4							
5							
6					0.2		0.2
7					0.2		0.2
8							
9							
10							
11							
12							
13							
14							
15							
16							
17							
18							
19							
20							
21							
22							
23							
TOTAL					0.4		0.4

**MONTH : AUGUST**

**MODEL : C**

TABLE: Mean number of occurrences of the height of the base of the lowest cloud layer (metres) covering more than 4/8 of the sky below specified values and time.

Time (UTC)	Height of the base of the lowest cloud layer (metres)						
	<30	<60	<90	<150	<300	<450	TOTAL
0							
1							
2							
3							
4							
5							
6							
7							
8							
9							
10							
11							
12							
13							
14							
15							
16							
17							
18							
19							
20							
21							
22							
23							
TOTAL							

**MONTH : SEPTEMBER**

**MODEL : C**

TABLE: Mean number of occurrences of the height of the base of the lowest cloud layer (metres) covering more than 4/8 of the sky below specified values and time.

Time (UTC)	Height of the base of the lowest cloud layer (metres)						
	<30	<60	<90	<150	<300	<450	TOTAL
0							
1							
2							
3							
4							
5							
6							
7							
8							
9							
10							
11							
12							
13							
14							
15							
16							
17							
18							
19							
20							
21							
22							
23							
TOTAL							

**MONTH : OCTOBER**

**MODEL : C**

TABLE: Mean number of occurrences of the height of the base of the lowest cloud layer (metres) covering more than 4/8 of the sky below specified values and time.

Time (UTC)	Height of the base of the lowest cloud layer (metres)						
	<30	<60	<90	<150	<300	<450	TOTAL
0							
1							
2							
3							
4							
5							
6							
7							
8							
9							
10							
11							
12							
13							
14							
15							
16						0.2	0.2
17							
18							
19							
20							
21							
22							
23							
TOTAL						0.2	0.2

**MONTH : NOVEMBER**

**MODEL : C**

TABLE: Mean number of occurrences of the height of the base of the lowest cloud layer (metres) covering more than 4/8 of the sky below specified values and time.

Time (UTC)	Height of the base of the lowest cloud layer (metres)						
	<30	<60	<90	<150	<300	<450	TOTAL
0							
1							
2							
3							
4							
5							
6							
7							
8							
9							
10							
11							
12							
13							
14							
15							
16							
17							
18							
19							
20							
21							
22							
23							
TOTAL							



**MONTH : DECEMBER**

**MODEL : C**

TABLE: Mean number of occurrences of the height of the base of the lowest cloud layer (metres) covering more than 4/8 of the sky below specified values and time.

Time (UTC)	Height of the base of the lowest cloud layer (metres)						
	<30	<60	<90	<150	<300	<450	TOTAL
0							
1							
2							
3							
4							
5							
6						0.2	0.2
7						0.2	0.2
8							
9							
10							
11							
12							
13							
14							
15							
16							
17							
18							
19							
20							
21							
22							
23							
TOTAL						0.4	0.4

**MONTH : JANUARY**

**TIME : 0 UTC**

**MODEL : D**

TABLE: Mean number of occurrences of concurrent wind direction (in 30 degree sector) and wind speed in specified ranges.

<b>Wind Direction in tens of degree</b>	<b>WIND SPEED (KNOTS)</b>												
	0	1 TO 5	6 TO 10	11 TO 15	16 TO 20	21 TO 25	26 TO 30	31 TO 35	36 TO 40	41 TO 45	46 TO 50	> 50	TOTAL
Calm	11.4												11.4
Variable													
35-36-01													
02-03-04		0.2	0.2										0.4
05-06-07		0.2	0.2										0.4
08-09-10		0.8											0.8
11-12-13		2.6	1.2										3.8
14-15-16		4.0	1.2										5.2
17-18-19		1.0	0.2										1.2
20-21-22		1.0	0.6										1.6
23-24-25		1.8											1.8
26-27-28		2.0	0.4										2.4
29-30-31		0.2	0.4										0.6
32-33-34		1.2	0.2										1.4
TOTAL	11.4	15.0	4.6										31.0

**MONTH : JANUARY**

**TIME : 3 UTC**

**MODEL : D**

TABLE: Mean number of occurrences of concurrent wind direction (in 30 degree sector) and wind speed in specified ranges.

Wind Direction in tens of degree	WIND SPEED (KNOTS)												TOTAL
	0	1 TO 5	6 TO 10	11 TO 15	16 TO 20	21 TO 25	26 TO 30	31 TO 35	36 TO 40	41 TO 45	46 TO 50	> 50	
Calm	7.4												7.4
Variable													
35-36-01													
02-03-04													
05-06-07		0.4											0.4
08-09-10		1.2	0.4										1.6
11-12-13		1.0	0.6										1.6
14-15-16		2.6	1.2										3.8
17-18-19		2.0	1.0										3.0
20-21-22		2.4	0.4	0.2									3.0
23-24-25		4.4	1.2										5.6
26-27-28		1.2	0.4	0.2									1.8
29-30-31		1.0	1.0	0.2									2.2
32-33-34		0.6											0.6
TOTAL	7.4	16.8	6.2	0.6									31.0

**MONTH : JANUARY**

**TIME : 6 UTC**

**MODEL : D**

TABLE: Mean number of occurrences of concurrent wind direction (in 30 degree sector) and wind speed in specified ranges.

<b>Wind Direction in tens of degree</b>	<b>WIND SPEED (KNOTS)</b>												
	0	1 TO 5	6 TO 10	11 TO 15	16 TO 20	21 TO 25	26 TO 30	31 TO 35	36 TO 40	41 TO 45	46 TO 50	> 50	TOTAL
Calm	2.4												2.4
Variable													
35-36-01		0.2											0.2
02-03-04		0.2											0.2
05-06-07		0.6	0.2										0.8
08-09-10		0.4	0.6	0.2									1.2
11-12-13			0.6										0.6
14-15-16		0.4											0.4
17-18-19		0.4	0.4										0.8
20-21-22													
23-24-25		1.0	0.6										1.6
26-27-28		1.6	2.8	0.6									5.0
29-30-31		2.6	8.0	1.8	0.2								12.6
32-33-34		3.4	1.2										4.6
TOTAL	2.4	10.8	14.4	2.6	0.2								30.4

**MONTH : JANUARY**

**TIME : 9 UTC**

**MODEL : D**

TABLE: Mean number of occurrences of concurrent wind direction (in 30 degree sector) and wind speed in specified ranges.

Wind Direction in tens of degree	WIND SPEED (KNOTS)												
	0	1 TO 5	6 TO 10	11 TO 15	16 TO 20	21 TO 25	26 TO 30	31 TO 35	36 TO 40	41 TO 45	46 TO 50	> 50	TOTAL
Calm	2.4												2.4
Variable													
35-36-01		1.2	0.4										1.6
02-03-04		1.4	0.6										2.0
05-06-07			0.8										0.8
08-09-10			0.4										0.4
11-12-13													
14-15-16													
17-18-19			0.2										0.2
20-21-22		0.2											0.2
23-24-25		0.2											0.2
26-27-28		0.6	0.8	0.2									1.6
29-30-31		0.6	8.0	3.0									11.6
32-33-34		3.8	5.4	0.6									9.8
TOTAL	2.4	8.0	16.6	3.8									30.8

**MONTH : JANUARY**

**TIME : 12 UTC**

**MODEL : D**

TABLE: Mean number of occurrences of concurrent wind direction (in 30 degree sector) and wind speed in specified ranges.

<b>Wind Direction in tens of degree</b>	<b>WIND SPEED (KNOTS)</b>												
	0	1 TO 5	6 TO 10	11 TO 15	16 TO 20	21 TO 25	26 TO 30	31 TO 35	36 TO 40	41 TO 45	46 TO 50	> 50	TOTAL
Calm	8.4												8.4
Variable													
35-36-01		1.0	0.2										1.2
02-03-04		2.2	1.2										3.4
05-06-07		0.8	0.4										1.2
08-09-10													
11-12-13													
14-15-16		0.2											0.2
17-18-19			0.4										0.4
20-21-22													
23-24-25		0.4											0.4
26-27-28		0.6											0.6
29-30-31		4.4	2.2	0.2									6.8
32-33-34		6.4	1.6										8.0
TOTAL	8.4	16.0	6.0	0.2									30.6

**MONTH : JANUARY**

**TIME : 15 UTC**

**MODEL : D**

TABLE: Mean number of occurrences of concurrent wind direction (in 30 degree sector) and wind speed in specified ranges.

<b>Wind Direction in tens of degree</b>	<b>WIND SPEED (KNOTS)</b>												
	0	1 TO 5	6 TO 10	11 TO 15	16 TO 20	21 TO 25	26 TO 30	31 TO 35	36 TO 40	41 TO 45	46 TO 50	> 50	TOTAL
Calm	15.0												15.0
Variable													
35-36-01		1.2	0.2										1.4
02-03-04		1.0	0.2										1.2
05-06-07		1.0	0.8	0.2									2.0
08-09-10		0.6	0.6										1.2
11-12-13		0.2											0.2
14-15-16		0.4	0.2										0.6
17-18-19			0.4										0.4
20-21-22		0.4	0.2										0.6
23-24-25		0.4											0.4
26-27-28		2.0	0.4	0.2									2.6
29-30-31		1.2	1.0										2.2
32-33-34		2.2	0.8										3.0
TOTAL	15.0	10.6	4.8	0.4									30.8

**MONTH : JANUARY**

**TIME : 18 UTC**

**MODEL : D**

TABLE: Mean number of occurrences of concurrent wind direction (in 30 degree sector) and wind speed in specified ranges.

Wind Direction in tens of degree	WIND SPEED (KNOTS)												
	0	1 TO 5	6 TO 10	11 TO 15	16 TO 20	21 TO 25	26 TO 30	31 TO 35	36 TO 40	41 TO 45	46 TO 50	> 50	TOTAL
Calm	18.4												18.4
Variable													
35-36-01													
02-03-04													
05-06-07		0.2	0.2										0.4
08-09-10		1.0	0.6										1.6
11-12-13		0.6	0.6										1.2
14-15-16		1.0	0.4										1.4
17-18-19		0.8	0.2										1.0
20-21-22		0.2											0.2
23-24-25		1.0	0.2										1.2
26-27-28		1.6	0.2										1.8
29-30-31		1.2	0.8										2.0
32-33-34		1.8											1.8
TOTAL	18.4	9.4	3.2										31.0



**MONTH : JANUARY**

**TIME : 21 UTC**

**MODEL : D**

TABLE: Mean number of occurrences of concurrent wind direction (in 30 degree sector) and wind speed in specified ranges.

Wind Direction in tens of degree	WIND SPEED (KNOTS)												TOTAL
	0	1 TO 5	6 TO 10	11 TO 15	16 TO 20	21 TO 25	26 TO 30	31 TO 35	36 TO 40	41 TO 45	46 TO 50	> 50	
Calm	18.2												18.2
Variable													
35-36-01		0.2											0.2
02-03-04		0.4											0.4
05-06-07			0.2										0.2
08-09-10		1.2	0.4										1.6
11-12-13		2.0	0.8										2.8
14-15-16		1.8	0.2										2.0
17-18-19		1.0											1.0
20-21-22		0.2	0.2										0.4
23-24-25			0.2										0.2
26-27-28		1.2	0.6										1.8
29-30-31		0.4	0.6										1.0
32-33-34		0.6	0.2										0.8
TOTAL	18.2	9.0	3.4										30.6

**MONTH : FEBRUARY**

**TIME : 0 UTC**

**MODEL : D**

TABLE: Mean number of occurrences of concurrent wind direction (in 30 degree sector) and wind speed in specified ranges.

<b>Wind Direction in tens of degree</b>	<b>WIND SPEED (KNOTS)</b>												
	0	1 TO 5	6 TO 10	11 TO 15	16 TO 20	21 TO 25	26 TO 30	31 TO 35	36 TO 40	41 TO 45	46 TO 50	> 50	TOTAL
Calm	10.6												10.6
Variable													
35-36-01		0.2	0.2										0.4
02-03-04													
05-06-07		0.2	0.2										0.4
08-09-10		0.6	0.4										1.0
11-12-13		2.4	1.4										3.8
14-15-16		3.8	1.6										5.4
17-18-19		1.4	0.4										1.8
20-21-22		0.8											0.8
23-24-25		2.2	0.4										2.6
26-27-28		0.6											0.6
29-30-31		0.4											0.4
32-33-34		0.4											0.4
TOTAL	10.6	13.0	4.6										28.2

**MONTH : FEBRUARY**

**TIME : 3 UTC**

**MODEL : D**

TABLE: Mean number of occurrences of concurrent wind direction (in 30 degree sector) and wind speed in specified ranges.

Wind Direction in tens of degree	WIND SPEED (KNOTS)												
	0	1 TO 5	6 TO 10	11 TO 15	16 TO 20	21 TO 25	26 TO 30	31 TO 35	36 TO 40	41 TO 45	46 TO 50	> 50	TOTAL
Calm	4.2												4.2
Variable													
35-36-01													
02-03-04		0.2	0.2										0.4
05-06-07		0.2	0.2										0.4
08-09-10		0.2	0.2										0.4
11-12-13		0.4	0.4										0.8
14-15-16		4.0	2.4										6.4
17-18-19		2.4	0.6										3.0
20-21-22		2.4	0.8										3.2
23-24-25		4.4	2.2										6.6
26-27-28		1.0	1.2										2.2
29-30-31		0.4		0.2									0.6
32-33-34													
TOTAL	4.2	15.6	8.2	0.2									28.2

**MONTH : FEBRUARY**

**TIME : 6 UTC**

**MODEL : D**

TABLE: Mean number of occurrences of concurrent wind direction (in 30 degree sector) and wind speed in specified ranges.

Wind Direction in tens of degree	WIND SPEED (KNOTS)												TOTAL
	0	1 TO 5	6 TO 10	11 TO 15	16 TO 20	21 TO 25	26 TO 30	31 TO 35	36 TO 40	41 TO 45	46 TO 50	> 50	
Calm	1.4												1.4
Variable													
35-36-01		0.4	0.4										0.8
02-03-04		0.4	0.4										0.8
05-06-07		0.4	0.2										0.6
08-09-10		0.6	0.6										1.2
11-12-13		0.2											0.2
14-15-16		0.2	0.6										0.8
17-18-19			0.6										0.6
20-21-22		0.8	0.2										1.0
23-24-25		1.8	1.4										3.2
26-27-28		1.8	3.0	1.6									6.4
29-30-31		2.0	4.6	1.8	0.2								8.6
32-33-34		0.8	1.8										2.6
TOTAL	1.4	9.4	13.8	3.4	0.2								28.2

**MONTH : FEBRUARY**

**TIME : 9 UTC**

**MODEL : D**

TABLE: Mean number of occurrences of concurrent wind direction (in 30 degree sector) and wind speed in specified ranges.

Wind Direction in tens of degree	WIND SPEED (KNOTS)												
	0	1 TO 5	6 TO 10	11 TO 15	16 TO 20	21 TO 25	26 TO 30	31 TO 35	36 TO 40	41 TO 45	46 TO 50	> 50	TOTAL
Calm	1.2												1.2
Variable													
35-36-01		1.8	0.6										2.4
02-03-04		0.6	0.4										1.0
05-06-07		1.0											1.0
08-09-10		0.2	0.4										0.6
11-12-13		0.2											0.2
14-15-16													
17-18-19													
20-21-22													
23-24-25		0.4	0.6										1.0
26-27-28		0.6	1.4	0.6	0.2								2.8
29-30-31		1.8	4.8	2.6	0.2								9.4
32-33-34		2.2	6.0	0.2									8.4
TOTAL	1.2	8.8	14.2	3.4	0.4								28.0

**MONTH : FEBRUARY**

**TIME : 12 UTC**

**MODEL : D**

TABLE: Mean number of occurrences of concurrent wind direction (in 30 degree sector) and wind speed in specified ranges.

Wind Direction in tens of degree	WIND SPEED (KNOTS)												TOTAL
	0	1 TO 5	6 TO 10	11 TO 15	16 TO 20	21 TO 25	26 TO 30	31 TO 35	36 TO 40	41 TO 45	46 TO 50	> 50	
Calm	8.6												8.6
Variable													
35-36-01		1.0	1.2										2.2
02-03-04		0.8	0.4										1.2
05-06-07		0.2	0.4										0.6
08-09-10			0.2	0.2									0.4
11-12-13													
14-15-16													
17-18-19													
20-21-22		0.2											0.2
23-24-25		0.4											0.4
26-27-28		0.6	0.2										0.8
29-30-31		2.0	1.4	0.2									3.6
32-33-34		5.6	4.2	0.2									10.0
TOTAL	8.6	10.8	8.0	0.6									28.0

**MONTH : FEBRUARY**

**TIME : 15 UTC**

**MODEL : D**

TABLE: Mean number of occurrences of concurrent wind direction (in 30 degree sector) and wind speed in specified ranges.

Wind Direction in tens of degree	WIND SPEED (KNOTS)												TOTAL
	0	1 TO 5	6 TO 10	11 TO 15	16 TO 20	21 TO 25	26 TO 30	31 TO 35	36 TO 40	41 TO 45	46 TO 50	> 50	
Calm	14.6												14.6
Variable													
35-36-01		0.6											0.6
02-03-04		0.2	0.4										0.6
05-06-07		1.2	0.2										1.4
08-09-10		0.8	0.2										1.0
11-12-13		0.4	0.2										0.6
14-15-16													
17-18-19		0.2	0.2										0.4
20-21-22		1.0											1.0
23-24-25		0.8	0.2										1.0
26-27-28		0.8	0.6										1.4
29-30-31		1.8	0.8										2.6
32-33-34		1.8	1.0										2.8
TOTAL	14.6	9.6	3.8										28.0

**MONTH : FEBRUARY**

**TIME : 18 UTC**

**MODEL : D**

TABLE: Mean number of occurrences of concurrent wind direction (in 30 degree sector) and wind speed in specified ranges.

<b>Wind Direction in tens of degree</b>	<b>WIND SPEED (KNOTS)</b>												
	0	1 TO 5	6 TO 10	11 TO 15	16 TO 20	21 TO 25	26 TO 30	31 TO 35	36 TO 40	41 TO 45	46 TO 50	> 50	TOTAL
Calm	15.4												15.4
Variable													
35-36-01		0.4											0.4
02-03-04													
05-06-07		0.8	0.6										1.4
08-09-10		0.6	0.2										0.8
11-12-13		0.8	0.4										1.2
14-15-16		0.8	0.2										1.0
17-18-19		0.6											0.6
20-21-22		1.0	1.2										2.2
23-24-25		1.4	0.4										1.8
26-27-28		1.2	0.4										1.6
29-30-31		0.8	0.8										1.6
32-33-34		0.2											0.2
TOTAL	15.4	8.6	4.2										28.2



**MONTH : FEBRUARY**

**TIME : 21 UTC**

**MODEL : D**

TABLE: Mean number of occurrences of concurrent wind direction (in 30 degree sector) and wind speed in specified ranges.

Wind Direction in tens of degree	WIND SPEED (KNOTS)												TOTAL
	0	1 TO 5	6 TO 10	11 TO 15	16 TO 20	21 TO 25	26 TO 30	31 TO 35	36 TO 40	41 TO 45	46 TO 50	> 50	
Calm	16.4												16.4
Variable													
35-36-01													
02-03-04			0.4										0.4
05-06-07		0.4											0.4
08-09-10		0.4	0.4										0.8
11-12-13		1.8	0.4										2.2
14-15-16		1.2	0.6										1.8
17-18-19		0.8											0.8
20-21-22		1.2	0.4										1.6
23-24-25		0.8	0.4										1.2
26-27-28		0.8	0.2										1.0
29-30-31		1.0	0.4										1.4
32-33-34		0.2											0.2
TOTAL	16.4	8.6	3.2										28.2

**MONTH : MARCH**

**TIME : 0 UTC**

**MODEL : D**

TABLE: Mean number of occurrences of concurrent wind direction (in 30 degree sector) and wind speed in specified ranges.

<b>Wind Direction in tens of degree</b>	<b>WIND SPEED (KNOTS)</b>												
	0	1 TO 5	6 TO 10	11 TO 15	16 TO 20	21 TO 25	26 TO 30	31 TO 35	36 TO 40	41 TO 45	46 TO 50	> 50	TOTAL
Calm	10.4												10.4
Variable													
35-36-01		0.2	0.2										0.4
02-03-04		0.2											0.2
05-06-07		0.6	0.2										0.8
08-09-10		1.2	1.0										2.2
11-12-13		3.0	0.6										3.6
14-15-16		2.4	3.2										5.6
17-18-19		1.4	0.2										1.6
20-21-22		1.2											1.2
23-24-25		1.2	1.2										2.4
26-27-28		1.4	0.4										1.8
29-30-31			0.2										0.2
32-33-34		0.2	0.2										0.4
TOTAL	10.4	13.0	7.4										30.8

**MONTH : MARCH**

**TIME : 3 UTC**

**MODEL : D**

TABLE: Mean number of occurrences of concurrent wind direction (in 30 degree sector) and wind speed in specified ranges.

<b>Wind Direction in tens of degree</b>	<b>WIND SPEED (KNOTS)</b>												
	0	1 TO 5	6 TO 10	11 TO 15	16 TO 20	21 TO 25	26 TO 30	31 TO 35	36 TO 40	41 TO 45	46 TO 50	> 50	TOTAL
Calm	3.0												3.0
Variable													
35-36-01													
02-03-04			0.4										0.4
05-06-07		0.4	0.4										0.8
08-09-10		0.8	1.0										1.8
11-12-13		0.8	0.2										1.0
14-15-16		2.0	0.8										2.8
17-18-19		0.4	0.6										1.0
20-21-22		3.0	0.8										3.8
23-24-25		4.4	6.8	0.6									11.8
26-27-28		1.6	1.4										3.0
29-30-31		0.2		0.4	0.2								0.8
32-33-34		0.2	0.2										0.4
TOTAL	3.0	13.8	12.6	1.0	0.2								30.6

**MONTH : MARCH**

**TIME : 6 UTC**

**MODEL : D**

TABLE: Mean number of occurrences of concurrent wind direction (in 30 degree sector) and wind speed in specified ranges.

Wind Direction in tens of degree	WIND SPEED (KNOTS)												
	0	1 TO 5	6 TO 10	11 TO 15	16 TO 20	21 TO 25	26 TO 30	31 TO 35	36 TO 40	41 TO 45	46 TO 50	> 50	TOTAL
Calm	1.6												1.6
Variable													
35-36-01		0.4											0.4
02-03-04			0.8										0.8
05-06-07		0.4	0.6										1.0
08-09-10			0.4	0.2									0.6
11-12-13			0.2										0.2
14-15-16		1.0	0.2										1.2
17-18-19													
20-21-22			0.6	0.4									1.0
23-24-25		0.4	2.6	0.6									3.6
26-27-28		1.8	5.6	1.4	0.2								9.0
29-30-31		1.0	4.6	1.8	0.6								8.0
32-33-34		1.4	1.8	0.4									3.6
TOTAL	1.6	6.4	17.4	4.8	0.8								31.0

**MONTH : MARCH**

**TIME : 9 UTC**

**MODEL : D**

TABLE: Mean number of occurrences of concurrent wind direction (in 30 degree sector) and wind speed in specified ranges.

Wind Direction in tens of degree	WIND SPEED (KNOTS)												
	0	1 TO 5	6 TO 10	11 TO 15	16 TO 20	21 TO 25	26 TO 30	31 TO 35	36 TO 40	41 TO 45	46 TO 50	> 50	TOTAL
Calm	0.2												0.2
Variable													
35-36-01		0.4	0.2										0.6
02-03-04		0.6	0.6										1.2
05-06-07		0.2	0.4	0.2									0.8
08-09-10			0.4										0.4
11-12-13													
14-15-16			0.4										0.4
17-18-19		0.2											0.2
20-21-22													
23-24-25		0.2	0.4	0.2									0.8
26-27-28		1.2	2.2	0.4	0.6								4.4
29-30-31		2.0	4.8	4.8	1.2	0.4							13.2
32-33-34		1.6	5.4	1.4	0.2								8.6
TOTAL	0.2	6.4	14.8	7.0	2.0	0.4							30.8

**MONTH : MARCH**

**TIME : 12 UTC**

**MODEL : D**

TABLE: Mean number of occurrences of concurrent wind direction (in 30 degree sector) and wind speed in specified ranges.

<b>Wind Direction in tens of degree</b>	<b>WIND SPEED (KNOTS)</b>												
	0	1 TO 5	6 TO 10	11 TO 15	16 TO 20	21 TO 25	26 TO 30	31 TO 35	36 TO 40	41 TO 45	46 TO 50	> 50	TOTAL
Calm	4.4												4.4
Variable													
35-36-01		1.8	1.0										2.8
02-03-04		1.0	0.2										1.2
05-06-07		0.2	0.2	0.2									0.6
08-09-10			0.2										0.2
11-12-13		0.2		0.2									0.4
14-15-16			0.2										0.2
17-18-19													
20-21-22		0.2	0.2										0.4
23-24-25		0.4	0.2										0.6
26-27-28		0.4	0.8	0.2									1.4
29-30-31		1.8	2.4	0.6									4.8
32-33-34		5.2	8.8										14.0
TOTAL	4.4	11.2	14.2	1.2									31.0

**MONTH : MARCH**

**TIME : 15 UTC**

**MODEL : D**

TABLE: Mean number of occurrences of concurrent wind direction (in 30 degree sector) and wind speed in specified ranges.

Wind Direction in tens of degree	WIND SPEED (KNOTS)												TOTAL
	0	1 TO 5	6 TO 10	11 TO 15	16 TO 20	21 TO 25	26 TO 30	31 TO 35	36 TO 40	41 TO 45	46 TO 50	> 50	
Calm	15.4												15.4
Variable													
35-36-01		0.6											0.6
02-03-04		1.0											1.0
05-06-07		0.6	0.6										1.2
08-09-10		0.6		0.2									0.8
11-12-13			0.2										0.2
14-15-16			0.2										0.2
17-18-19		0.2	0.2										0.4
20-21-22		0.6	0.6										1.2
23-24-25		1.4	0.6	0.2									2.2
26-27-28		1.4	1.6										3.0
29-30-31		1.0	0.2										1.2
32-33-34		2.4	1.2										3.6
TOTAL	15.4	9.8	5.4	0.4									31.0

**MONTH : MARCH**

**TIME : 18 UTC**

**MODEL : D**

TABLE: Mean number of occurrences of concurrent wind direction (in 30 degree sector) and wind speed in specified ranges.

Wind Direction in tens of degree	WIND SPEED (KNOTS)												
	0	1 TO 5	6 TO 10	11 TO 15	16 TO 20	21 TO 25	26 TO 30	31 TO 35	36 TO 40	41 TO 45	46 TO 50	> 50	TOTAL
Calm	14.8												14.8
Variable													
35-36-01													
02-03-04		0.2		0.2									0.4
05-06-07		0.2		0.2									0.4
08-09-10		1.4	0.4										1.8
11-12-13		0.6	0.6										1.2
14-15-16		1.6	2.4										4.0
17-18-19		0.8	0.6										1.4
20-21-22		1.6	0.6										2.2
23-24-25		1.6	0.6										2.2
26-27-28		0.4	0.4										0.8
29-30-31		0.4		0.2									0.6
32-33-34		0.2	0.6										0.8
TOTAL	14.8	9.0	6.2	0.6									30.6



**MONTH : MARCH**

**TIME : 21 UTC**

**MODEL : D**

TABLE: Mean number of occurrences of concurrent wind direction (in 30 degree sector) and wind speed in specified ranges.

Wind Direction in tens of degree	WIND SPEED (KNOTS)												
	0	1 TO 5	6 TO 10	11 TO 15	16 TO 20	21 TO 25	26 TO 30	31 TO 35	36 TO 40	41 TO 45	46 TO 50	> 50	TOTAL
Calm	17.4												17.4
Variable													
35-36-01													
02-03-04													
05-06-07		0.2	0.2										0.4
08-09-10		1.6	0.6	0.2									2.4
11-12-13		0.6											0.6
14-15-16		1.6	2.2										3.8
17-18-19		1.2	0.6										1.8
20-21-22		0.4	0.2										0.6
23-24-25		1.4	0.2										1.6
26-27-28		0.6	0.4										1.0
29-30-31		0.6	0.2	0.2									1.0
32-33-34		0.4											0.4
TOTAL	17.4	8.6	4.6	0.4									31.0

**MONTH : APRIL**

**TIME : 0 UTC**

**MODEL : D**

TABLE: Mean number of occurrences of concurrent wind direction (in 30 degree sector) and wind speed in specified ranges.

Wind Direction in tens of degree	WIND SPEED (KNOTS)												
	0	1 TO 5	6 TO 10	11 TO 15	16 TO 20	21 TO 25	26 TO 30	31 TO 35	36 TO 40	41 TO 45	46 TO 50	> 50	TOTAL
Calm	8.4												8.4
Variable													
35-36-01		0.4											0.4
02-03-04		1.0											1.0
05-06-07		2.4	1.4	0.6									4.4
08-09-10		1.4	1.0										2.4
11-12-13		2.4	1.2	0.2									3.8
14-15-16		2.0	1.8										3.8
17-18-19		1.4	1.0										2.4
20-21-22		0.8											0.8
23-24-25		0.2	0.4										0.6
26-27-28		0.4	0.2										0.6
29-30-31		0.2		0.2									0.4
32-33-34		0.2	0.4										0.6
TOTAL	8.4	12.8	7.4	1.0									29.6

**MONTH : APRIL**

**TIME : 3 UTC**

**MODEL : D**

TABLE: Mean number of occurrences of concurrent wind direction (in 30 degree sector) and wind speed in specified ranges.

<b>Wind Direction in tens of degree</b>	<b>WIND SPEED (KNOTS)</b>												
	0	1 TO 5	6 TO 10	11 TO 15	16 TO 20	21 TO 25	26 TO 30	31 TO 35	36 TO 40	41 TO 45	46 TO 50	> 50	TOTAL
Calm	3.2												3.2
Variable													
35-36-01			0.2										0.2
02-03-04		0.2	0.8										1.0
05-06-07		1.2	1.2	0.2	0.2								2.8
08-09-10		1.8	2.6	0.2									4.6
11-12-13		0.4	0.8	0.4									1.6
14-15-16		0.4	0.8										1.2
17-18-19		1.0	0.4	0.2									1.6
20-21-22		2.2	0.6										2.8
23-24-25		3.8	2.6										6.4
26-27-28		0.6	1.0	0.4									2.0
29-30-31		0.4	0.6	0.2	0.2								1.4
32-33-34		0.2	0.2	0.4									0.8
TOTAL	3.2	12.2	11.8	2.0	0.4								29.6

**MONTH : APRIL**

**TIME : 6 UTC**

**MODEL : D**

TABLE: Mean number of occurrences of concurrent wind direction (in 30 degree sector) and wind speed in specified ranges.

Wind Direction in tens of degree	WIND SPEED (KNOTS)												TOTAL
	0	1 TO 5	6 TO 10	11 TO 15	16 TO 20	21 TO 25	26 TO 30	31 TO 35	36 TO 40	41 TO 45	46 TO 50	> 50	
Calm	1.6												1.6
Variable													
35-36-01		0.4	1.0										1.4
02-03-04		1.2	0.4										1.6
05-06-07		1.8	2.0	0.4									4.2
08-09-10		0.4	1.0	0.6									2.0
11-12-13			0.4										0.4
14-15-16			0.2										0.2
17-18-19			0.4										0.4
20-21-22		0.4	0.2										0.6
23-24-25		0.4	0.8										1.2
26-27-28		0.6	2.8	0.8									4.2
29-30-31		1.2	2.8	2.6	0.6								7.2
32-33-34		1.6	2.6	0.4									4.6
TOTAL	1.6	8.0	14.6	4.8	0.6								29.6

**MONTH : APRIL**

**TIME : 9 UTC**

**MODEL : D**

TABLE: Mean number of occurrences of concurrent wind direction (in 30 degree sector) and wind speed in specified ranges.

Wind Direction in tens of degree	WIND SPEED (KNOTS)												
	0	1 TO 5	6 TO 10	11 TO 15	16 TO 20	21 TO 25	26 TO 30	31 TO 35	36 TO 40	41 TO 45	46 TO 50	> 50	TOTAL
Calm	1.6												1.6
Variable													
35-36-01		0.8	1.2										2.0
02-03-04		1.0	1.6										2.6
05-06-07		1.0	1.8	0.4	0.2								3.4
08-09-10		0.4	0.8	0.6									1.8
11-12-13			0.2										0.2
14-15-16													
17-18-19			0.4										0.4
20-21-22													
23-24-25		0.2	0.4	0.2									0.8
26-27-28		0.2	1.8	0.8	0.2								3.0
29-30-31		1.2	1.8	2.4	1.0								6.4
32-33-34		1.4	3.2	1.6	1.0								7.2
TOTAL	1.6	6.2	13.2	6.0	2.4								29.4

**MONTH : APRIL**

**TIME : 12 UTC**

**MODEL : D**

TABLE: Mean number of occurrences of concurrent wind direction (in 30 degree sector) and wind speed in specified ranges.

Wind Direction in tens of degree	WIND SPEED (KNOTS)												
	0	1 TO 5	6 TO 10	11 TO 15	16 TO 20	21 TO 25	26 TO 30	31 TO 35	36 TO 40	41 TO 45	46 TO 50	> 50	TOTAL
Calm	4.0												4.0
Variable													
35-36-01		1.2	1.2										2.4
02-03-04		1.8	3.0										4.8
05-06-07		1.6	2.4	0.6									4.6
08-09-10		0.2		0.2									0.4
11-12-13		0.2	0.6										0.8
14-15-16			0.4										0.4
17-18-19			0.4										0.4
20-21-22													
23-24-25		0.2	0.2										0.4
26-27-28			1.0										1.0
29-30-31		0.2	2.2	0.6									3.0
32-33-34		1.2	4.2	1.8	0.6								7.8
TOTAL	4.0	6.6	15.6	3.2	0.6								30.0

**MONTH : APRIL**

**TIME : 15 UTC**

**MODEL : D**

TABLE: Mean number of occurrences of concurrent wind direction (in 30 degree sector) and wind speed in specified ranges.

Wind Direction in tens of degree	WIND SPEED (KNOTS)												
	0	1 TO 5	6 TO 10	11 TO 15	16 TO 20	21 TO 25	26 TO 30	31 TO 35	36 TO 40	41 TO 45	46 TO 50	> 50	TOTAL
Calm	9.6												9.6
Variable													
35-36-01													
02-03-04		0.4	1.2										1.6
05-06-07		5.4	3.6	1.2									10.2
08-09-10		0.6	1.2	0.4									2.2
11-12-13		0.2											0.2
14-15-16		0.4	0.4		0.2								1.0
17-18-19													
20-21-22		0.2	0.2										0.4
23-24-25		0.6											0.6
26-27-28		0.4	0.2										0.6
29-30-31		0.2	0.8										1.0
32-33-34		1.2	1.4										2.6
TOTAL	9.6	9.6	9.0	1.6	0.2								30.0

**MONTH : APRIL**

**TIME : 18 UTC**

**MODEL : D**

TABLE: Mean number of occurrences of concurrent wind direction (in 30 degree sector) and wind speed in specified ranges.

<b>Wind Direction in tens of degree</b>	<b>WIND SPEED (KNOTS)</b>												
	0	1 TO 5	6 TO 10	11 TO 15	16 TO 20	21 TO 25	26 TO 30	31 TO 35	36 TO 40	41 TO 45	46 TO 50	> 50	TOTAL
Calm	7.2												7.2
Variable													
35-36-01		0.2	0.4										0.6
02-03-04		0.4	0.2										0.6
05-06-07		5.2	3.0										8.2
08-09-10		2.0	2.2										4.2
11-12-13		0.6	0.6	0.4									1.6
14-15-16		1.0	0.2										1.2
17-18-19		0.8	0.2										1.0
20-21-22		0.6	0.2										0.8
23-24-25		1.0	1.0										2.0
26-27-28		0.6	0.6										1.2
29-30-31			0.4										0.4
32-33-34		0.2	0.4										0.6
TOTAL	7.2	12.6	9.4	0.4									29.6



**MONTH : APRIL**

**TIME : 21 UTC**

**MODEL : D**

TABLE: Mean number of occurrences of concurrent wind direction (in 30 degree sector) and wind speed in specified ranges.

Wind Direction in tens of degree	WIND SPEED (KNOTS)												TOTAL
	0	1 TO 5	6 TO 10	11 TO 15	16 TO 20	21 TO 25	26 TO 30	31 TO 35	36 TO 40	41 TO 45	46 TO 50	> 50	
Calm	10.4												10.4
Variable													
35-36-01			0.4										0.4
02-03-04		0.4											0.4
05-06-07		4.4	1.4	0.2									6.0
08-09-10		2.4	1.2	0.2									3.8
11-12-13		1.0	0.8										1.8
14-15-16		1.6	0.8										2.4
17-18-19		0.8	0.8										1.6
20-21-22		0.8	0.4										1.2
23-24-25		0.4											0.4
26-27-28		0.2	0.4										0.6
29-30-31			0.4										0.4
32-33-34			0.4										0.4
<b>TOTAL</b>	<b>10.4</b>	<b>12.0</b>	<b>7.0</b>	<b>0.4</b>									<b>29.8</b>

**MONTH : MAY**

**TIME : 0 UTC**

**MODEL : D**

TABLE: Mean number of occurrences of concurrent wind direction (in 30 degree sector) and wind speed in specified ranges.

<b>Wind Direction in tens of degree</b>	<b>WIND SPEED (KNOTS)</b>												
	0	1 TO 5	6 TO 10	11 TO 15	16 TO 20	21 TO 25	26 TO 30	31 TO 35	36 TO 40	41 TO 45	46 TO 50	> 50	TOTAL
Calm	12.0												12.0
Variable													
35-36-01			0.2										0.2
02-03-04		0.4	0.6										1.0
05-06-07		1.6	2.0	0.2									3.8
08-09-10		2.4	1.8	0.4									4.6
11-12-13		2.2	0.4	0.2									2.8
14-15-16		0.8	1.6	0.2									2.6
17-18-19		0.2	0.2										0.4
20-21-22		0.8	0.4										1.2
23-24-25		0.8	0.4										1.2
26-27-28		0.2											0.2
29-30-31		0.2											0.2
32-33-34		0.2	0.2										0.4
TOTAL	12.0	9.8	7.8	1.0									30.6

**MONTH : MAY**

**TIME : 3 UTC**

**MODEL : D**

TABLE: Mean number of occurrences of concurrent wind direction (in 30 degree sector) and wind speed in specified ranges.

<b>Wind Direction in tens of degree</b>	<b>WIND SPEED (KNOTS)</b>												
	0	1 TO 5	6 TO 10	11 TO 15	16 TO 20	21 TO 25	26 TO 30	31 TO 35	36 TO 40	41 TO 45	46 TO 50	> 50	TOTAL
Calm	4.2												4.2
Variable													
35-36-01		0.4											0.4
02-03-04		0.2	1.0										1.2
05-06-07		1.8	2.0	0.4									4.2
08-09-10		1.4	2.8	1.0									5.2
11-12-13		1.2	1.6										2.8
14-15-16		1.0	0.2	0.2									1.4
17-18-19		0.4											0.4
20-21-22		0.4	0.4										0.8
23-24-25		3.2	2.8										6.0
26-27-28		0.8	0.2	0.2									1.2
29-30-31		0.6	1.0										1.6
32-33-34		0.8	0.6										1.4
TOTAL	4.2	12.2	12.6	1.8									30.8

**MONTH : MAY**

**TIME : 6 UTC**

**MODEL : D**

TABLE: Mean number of occurrences of concurrent wind direction (in 30 degree sector) and wind speed in specified ranges.

Wind Direction in tens of degree	WIND SPEED (KNOTS)												TOTAL
	0	1 TO 5	6 TO 10	11 TO 15	16 TO 20	21 TO 25	26 TO 30	31 TO 35	36 TO 40	41 TO 45	46 TO 50	> 50	
Calm	2.4												2.4
Variable													
35-36-01			0.8	0.2									1.0
02-03-04		1.2	1.4										2.6
05-06-07		2.2	2.2	0.6									5.0
08-09-10		0.4	0.8	0.6									1.8
11-12-13		0.4	1.2	0.2									1.8
14-15-16		0.8	0.4										1.2
17-18-19													
20-21-22		0.6	0.4										1.0
23-24-25		0.6	1.4										2.0
26-27-28		0.4	2.0	0.8	0.2								3.4
29-30-31		0.8	3.0	1.0	0.2								5.0
32-33-34		2.0	1.4	0.4									3.8
TOTAL	2.4	9.4	15.0	3.8	0.4								31.0

**MONTH : MAY**

**TIME : 9 UTC**

**MODEL : D**

TABLE: Mean number of occurrences of concurrent wind direction (in 30 degree sector) and wind speed in specified ranges.

Wind Direction in tens of degree	WIND SPEED (KNOTS)												
	0	1 TO 5	6 TO 10	11 TO 15	16 TO 20	21 TO 25	26 TO 30	31 TO 35	36 TO 40	41 TO 45	46 TO 50	> 50	TOTAL
Calm	1.6												1.6
Variable													
35-36-01		0.4	1.0		0.2								1.6
02-03-04		2.2	2.0	0.8									5.0
05-06-07		2.0	2.8	0.8									5.6
08-09-10		0.2	1.4	0.2									1.8
11-12-13													
14-15-16			0.2										0.2
17-18-19			0.2										0.2
20-21-22		0.2											0.2
23-24-25			0.4	0.4									0.8
26-27-28		0.6	1.6	0.6	0.2								3.0
29-30-31		0.2	2.0	1.8	0.6								4.6
32-33-34		1.6	3.2	1.2	0.2								6.2
TOTAL	1.6	7.4	14.8	5.8	1.2								30.8

**MONTH : MAY**

**TIME : 12 UTC**

**MODEL : D**

TABLE: Mean number of occurrences of concurrent wind direction (in 30 degree sector) and wind speed in specified ranges.

<b>Wind Direction in tens of degree</b>	<b>WIND SPEED (KNOTS)</b>												
	0	1 TO 5	6 TO 10	11 TO 15	16 TO 20	21 TO 25	26 TO 30	31 TO 35	36 TO 40	41 TO 45	46 TO 50	> 50	TOTAL
Calm	3.4												3.4
Variable													
35-36-01		0.8	0.4	0.2									1.4
02-03-04		2.4	2.0	0.4									4.8
05-06-07		1.6	5.2	0.4	0.2								7.4
08-09-10		0.6	1.2										1.8
11-12-13		0.4	0.2										0.6
14-15-16			0.2	0.4	0.2								0.8
17-18-19					0.2								0.2
20-21-22													
23-24-25		0.2	0.2	0.6									1.0
26-27-28			0.2										0.2
29-30-31			1.8	0.4									2.2
32-33-34		1.0	3.8	1.8									6.6
TOTAL	3.4	7.0	15.2	4.2	0.6								30.4

**MONTH : MAY**

**TIME : 15 UTC**

**MODEL : D**

TABLE: Mean number of occurrences of concurrent wind direction (in 30 degree sector) and wind speed in specified ranges.

<b>Wind Direction in tens of degree</b>	<b>WIND SPEED (KNOTS)</b>												
	0	1 TO 5	6 TO 10	11 TO 15	16 TO 20	21 TO 25	26 TO 30	31 TO 35	36 TO 40	41 TO 45	46 TO 50	> 50	TOTAL
Calm	8.2												8.2
Variable													
35-36-01		0.6	0.2										0.8
02-03-04		1.8	0.6										2.4
05-06-07		5.0	3.0	2.2									10.2
08-09-10		0.8	2.4	0.8	0.2								4.2
11-12-13		0.6	0.6	0.4									1.6
14-15-16		0.2											0.2
17-18-19		0.2		0.2									0.4
20-21-22		0.2											0.2
23-24-25		0.2	0.4										0.6
26-27-28		0.4	0.4										0.8
29-30-31		0.4											0.4
32-33-34		0.8	0.2										1.0
TOTAL	8.2	11.2	7.8	3.6	0.2								31.0

**MONTH : MAY**

**TIME : 18 UTC**

**MODEL : D**

TABLE: Mean number of occurrences of concurrent wind direction (in 30 degree sector) and wind speed in specified ranges.

Wind Direction in tens of degree	WIND SPEED (KNOTS)												TOTAL
	0	1 TO 5	6 TO 10	11 TO 15	16 TO 20	21 TO 25	26 TO 30	31 TO 35	36 TO 40	41 TO 45	46 TO 50	> 50	
Calm	8.8												8.8
Variable													
35-36-01		0.6											0.6
02-03-04		0.4	0.2										0.6
05-06-07		3.2	3.6	0.8									7.6
08-09-10		1.4	2.4	0.6									4.4
11-12-13		0.8	0.6	0.4	0.2								2.0
14-15-16		1.2	1.2	0.4									2.8
17-18-19		0.4	0.2										0.6
20-21-22		0.4											0.4
23-24-25		1.2	0.6										1.8
26-27-28					0.2								0.2
29-30-31				0.4									0.4
32-33-34		0.4	0.2										0.6
TOTAL	8.8	10.0	9.0	2.6	0.4								30.8



**MONTH : MAY**

**TIME : 21 UTC**

**MODEL : D**

TABLE: Mean number of occurrences of concurrent wind direction (in 30 degree sector) and wind speed in specified ranges.

<b>Wind Direction in tens of degree</b>	<b>WIND SPEED (KNOTS)</b>												
	0	1 TO 5	6 TO 10	11 TO 15	16 TO 20	21 TO 25	26 TO 30	31 TO 35	36 TO 40	41 TO 45	46 TO 50	> 50	TOTAL
Calm	9.2												9.2
Variable													
35-36-01		0.2											0.2
02-03-04		0.4	0.2	0.2									0.8
05-06-07		3.8	1.8										5.6
08-09-10		2.4	3.6	0.4									6.4
11-12-13		1.4	0.6										2.0
14-15-16		1.6	0.6		0.2								2.4
17-18-19		0.8	0.4	0.2									1.4
20-21-22		0.4											0.4
23-24-25		0.6	0.2	0.2									1.0
26-27-28		0.8	0.2										1.0
29-30-31		0.2	0.2										0.4
32-33-34													
TOTAL	9.2	12.6	7.8	1.0	0.2								30.8

**MONTH : JUNE**

**TIME : 0 UTC**

**MODEL : D**

TABLE: Mean number of occurrences of concurrent wind direction (in 30 degree sector) and wind speed in specified ranges.

Wind Direction in tens of degree	WIND SPEED (KNOTS)												
	0	1 TO 5	6 TO 10	11 TO 15	16 TO 20	21 TO 25	26 TO 30	31 TO 35	36 TO 40	41 TO 45	46 TO 50	> 50	TOTAL
Calm	11.6												11.6
Variable													
35-36-01													
02-03-04		0.4											0.4
05-06-07		3.0	1.8	0.2									5.0
08-09-10		1.8	1.4	0.2									3.4
11-12-13		1.0	0.6										1.6
14-15-16		0.8	1.0										1.8
17-18-19		0.2	0.2										0.4
20-21-22		0.4	0.6										1.0
23-24-25		1.6	2.0										3.6
26-27-28		0.8		0.2									1.0
29-30-31		0.2											0.2
32-33-34													
TOTAL	11.6	10.2	7.6	0.6									30.0

**MONTH : JUNE**

**TIME : 3 UTC**

**MODEL : D**

TABLE: Mean number of occurrences of concurrent wind direction (in 30 degree sector) and wind speed in specified ranges.

Wind Direction in tens of degree	WIND SPEED (KNOTS)												TOTAL
	0	1 TO 5	6 TO 10	11 TO 15	16 TO 20	21 TO 25	26 TO 30	31 TO 35	36 TO 40	41 TO 45	46 TO 50	> 50	
Calm	3.8												3.8
Variable													
35-36-01		0.2											0.2
02-03-04		0.2											0.2
05-06-07		2.0	1.6										3.6
08-09-10		0.4	3.0	0.2	0.2								3.8
11-12-13		1.0	1.2										2.2
14-15-16		1.0	0.8	0.2									2.0
17-18-19			0.4										0.4
20-21-22		0.4	0.2	0.2									0.8
23-24-25		2.2	3.6	0.4	0.2								6.4
26-27-28		1.0	1.2	1.0	0.2								3.4
29-30-31		0.8	0.8	0.2									1.8
32-33-34		0.4	0.4		0.2								1.0
TOTAL	3.8	9.6	13.2	2.2	0.8								29.6

**MONTH : JUNE**

**TIME : 6 UTC**

**MODEL : D**

TABLE: Mean number of occurrences of concurrent wind direction (in 30 degree sector) and wind speed in specified ranges.

Wind Direction in tens of degree	WIND SPEED (KNOTS)												TOTAL
	0	1 TO 5	6 TO 10	11 TO 15	16 TO 20	21 TO 25	26 TO 30	31 TO 35	36 TO 40	41 TO 45	46 TO 50	> 50	
Calm	2.2												2.2
Variable													
35-36-01		0.4											0.4
02-03-04		0.6	0.2										0.8
05-06-07		1.0	2.0	0.8									3.8
08-09-10		0.8	1.8	0.6									3.2
11-12-13		0.2	0.8		0.2								1.2
14-15-16		0.2	0.4										0.6
17-18-19		0.4											0.4
20-21-22		0.2	0.4										0.6
23-24-25		1.0	1.2	0.6									2.8
26-27-28		0.8	2.6	0.8	1.0								5.2
29-30-31		1.4	1.8	0.8	0.2								4.2
32-33-34		1.0	2.2	1.0	0.2								4.4
TOTAL	2.2	8.0	13.4	4.6	1.6								29.8

**MONTH : JUNE**

**TIME : 9 UTC**

**MODEL : D**

TABLE: Mean number of occurrences of concurrent wind direction (in 30 degree sector) and wind speed in specified ranges.

Wind Direction in tens of degree	WIND SPEED (KNOTS)												TOTAL
	0	1 TO 5	6 TO 10	11 TO 15	16 TO 20	21 TO 25	26 TO 30	31 TO 35	36 TO 40	41 TO 45	46 TO 50	> 50	
Calm	1.8												1.8
Variable													
35-36-01		0.4	0.2										0.6
02-03-04		0.6	0.6										1.2
05-06-07		2.6	4.0	0.4	0.2								7.2
08-09-10			1.0	0.6	0.4								2.0
11-12-13		0.2	0.6	0.2									1.0
14-15-16					0.2								0.2
17-18-19		0.4	0.4										0.8
20-21-22		0.2	0.4										0.6
23-24-25		0.6	0.8	0.6									2.0
26-27-28		0.4	0.8	1.2	0.2								2.6
29-30-31		1.0	2.6	1.0	0.6								5.2
32-33-34		0.8	2.2	1.2	0.2								4.4
TOTAL	1.8	7.2	13.6	5.2	1.8								29.6

**MONTH : JUNE**

**TIME : 12 UTC**

**MODEL : D**

TABLE: Mean number of occurrences of concurrent wind direction (in 30 degree sector) and wind speed in specified ranges.

<b>Wind Direction in tens of degree</b>	<b>WIND SPEED (KNOTS)</b>												
	0	1 TO 5	6 TO 10	11 TO 15	16 TO 20	21 TO 25	26 TO 30	31 TO 35	36 TO 40	41 TO 45	46 TO 50	> 50	TOTAL
Calm	4.4												4.4
Variable													
35-36-01		0.4	0.4										0.8
02-03-04		1.2	1.2										2.4
05-06-07		3.2	3.2	0.2									6.6
08-09-10			1.2	0.4									1.6
11-12-13		0.4	1.8										2.2
14-15-16		0.6	0.8	0.2	0.6								2.2
17-18-19		0.2	0.4										0.6
20-21-22													
23-24-25		0.4	0.8	0.4	0.2								1.8
26-27-28		0.2	1.2	0.4	0.4								2.2
29-30-31		1.0	1.0	0.2									2.2
32-33-34		0.2	1.6	0.4	0.4								2.6
TOTAL	4.4	7.8	13.6	2.2	1.6								29.6

**MONTH : JUNE**

**TIME : 15 UTC**

**MODEL : D**

TABLE: Mean number of occurrences of concurrent wind direction (in 30 degree sector) and wind speed in specified ranges.

Wind Direction in tens of degree	WIND SPEED (KNOTS)												TOTAL
	0	1 TO 5	6 TO 10	11 TO 15	16 TO 20	21 TO 25	26 TO 30	31 TO 35	36 TO 40	41 TO 45	46 TO 50	> 50	
Calm	10.0												10.0
Variable													
35-36-01													
02-03-04		0.4	0.6										1.0
05-06-07		3.0	1.4	0.2									4.6
08-09-10		1.0	1.4	0.6									3.0
11-12-13		0.4	0.8	0.8									2.0
14-15-16		0.6	0.6	0.2									1.4
17-18-19		0.2	0.6										0.8
20-21-22			0.6										0.6
23-24-25		1.4	1.0	0.2									2.6
26-27-28		0.8	1.0		0.4								2.2
29-30-31		0.2											0.2
32-33-34		0.8											0.8
TOTAL	10.0	8.8	8.0	2.0	0.4								29.2

**MONTH : JUNE**

**TIME : 18 UTC**

**MODEL : D**

TABLE: Mean number of occurrences of concurrent wind direction (in 30 degree sector) and wind speed in specified ranges.

Wind Direction in tens of degree	WIND SPEED (KNOTS)												TOTAL
	0	1 TO 5	6 TO 10	11 TO 15	16 TO 20	21 TO 25	26 TO 30	31 TO 35	36 TO 40	41 TO 45	46 TO 50	> 50	
Calm	12.4												12.4
Variable													
35-36-01													
02-03-04													
05-06-07		1.6	0.8										2.4
08-09-10		1.4	3.0	0.2	0.2								4.8
11-12-13		0.2	1.6										1.8
14-15-16		0.8	1.4	0.4									2.6
17-18-19		0.8	0.6										1.4
20-21-22		0.2	0.2										0.4
23-24-25		0.6	0.8	0.4									1.8
26-27-28		1.0	0.2	0.2									1.4
29-30-31				0.2									0.2
32-33-34		0.2	0.4										0.6
TOTAL	12.4	6.8	9.0	1.4	0.2								29.8



**MONTH : JUNE**

**TIME : 21 UTC**

**MODEL : D**

TABLE: Mean number of occurrences of concurrent wind direction (in 30 degree sector) and wind speed in specified ranges.

Wind Direction in tens of degree	WIND SPEED (KNOTS)												TOTAL
	0	1 TO 5	6 TO 10	11 TO 15	16 TO 20	21 TO 25	26 TO 30	31 TO 35	36 TO 40	41 TO 45	46 TO 50	> 50	
Calm	12.8												12.8
Variable													
35-36-01													
02-03-04													
05-06-07		2.6	0.2										2.8
08-09-10		1.8	3.2	0.2									5.2
11-12-13		0.4	0.4										0.8
14-15-16		0.8	0.8										1.6
17-18-19		0.6	0.4										1.0
20-21-22		0.2	0.2										0.4
23-24-25		1.4	0.8										2.2
26-27-28		0.6	0.8										1.4
29-30-31		0.4	0.4										0.8
32-33-34		0.2	0.4										0.6
TOTAL	12.8	9.0	7.6	0.2									29.6

**MONTH : JULY**

**TIME : 0 UTC**

**MODEL : D**

TABLE: Mean number of occurrences of concurrent wind direction (in 30 degree sector) and wind speed in specified ranges.

Wind Direction in tens of degree	WIND SPEED (KNOTS)												TOTAL
	0	1 TO 5	6 TO 10	11 TO 15	16 TO 20	21 TO 25	26 TO 30	31 TO 35	36 TO 40	41 TO 45	46 TO 50	> 50	
Calm	13.6												13.6
Variable													
35-36-01													
02-03-04		0.2	0.4										0.6
05-06-07		1.8	2.0										3.8
08-09-10		1.4	2.0	0.6									4.0
11-12-13		1.2	0.6		0.2								2.0
14-15-16		1.0											1.0
17-18-19		0.4	0.2										0.6
20-21-22		0.8	0.4										1.2
23-24-25		2.2	0.4										2.6
26-27-28			0.8	0.2									1.0
29-30-31			0.2										0.2
32-33-34		0.2	0.2										0.4
TOTAL	13.6	9.2	7.2	0.8	0.2								31.0

**MONTH : JULY**

**TIME : 3 UTC**

**MODEL : D**

TABLE: Mean number of occurrences of concurrent wind direction (in 30 degree sector) and wind speed in specified ranges.

Wind Direction in tens of degree	WIND SPEED (KNOTS)												TOTAL
	0	1 TO 5	6 TO 10	11 TO 15	16 TO 20	21 TO 25	26 TO 30	31 TO 35	36 TO 40	41 TO 45	46 TO 50	> 50	
Calm	6.0												6.0
Variable													
35-36-01		0.4											0.4
02-03-04			0.2										0.2
05-06-07		1.4	1.4	0.4									3.2
08-09-10		1.4	2.4	1.6	0.4								5.8
11-12-13		0.4	1.2										1.6
14-15-16		1.2	1.0	0.2									2.4
17-18-19		0.2											0.2
20-21-22		0.6	0.2	0.2									1.0
23-24-25		3.4	3.0	0.6									7.0
26-27-28		0.6	0.8	0.4									1.8
29-30-31		0.4	0.8										1.2
32-33-34													
TOTAL	6.0	10.0	11.0	3.4	0.4								30.8

**MONTH : JULY**

**TIME : 6 UTC**

**MODEL : D**

TABLE: Mean number of occurrences of concurrent wind direction (in 30 degree sector) and wind speed in specified ranges.

Wind Direction in tens of degree	WIND SPEED (KNOTS)												TOTAL
	0	1 TO 5	6 TO 10	11 TO 15	16 TO 20	21 TO 25	26 TO 30	31 TO 35	36 TO 40	41 TO 45	46 TO 50	> 50	
Calm	4.0												4.0
Variable													
35-36-01		0.4											0.4
02-03-04		1.2	0.2										1.4
05-06-07		1.2	1.8	0.8									3.8
08-09-10		1.2	1.6	0.8	0.8								4.4
11-12-13			0.8	0.4									1.2
14-15-16		1.0	0.6	0.2									1.8
17-18-19		0.2	0.2										0.4
20-21-22			0.4	0.4									0.8
23-24-25		0.8	2.0	0.2									3.0
26-27-28		1.2	3.0	1.0	0.2								5.4
29-30-31		0.2	1.8	0.2									2.2
32-33-34		1.2	1.0										2.2
TOTAL	4.0	8.6	13.4	4.0	1.0								31.0

**MONTH : JULY**

**TIME : 9 UTC**

**MODEL : D**

TABLE: Mean number of occurrences of concurrent wind direction (in 30 degree sector) and wind speed in specified ranges.

Wind Direction in tens of degree	WIND SPEED (KNOTS)												TOTAL
	0	1 TO 5	6 TO 10	11 TO 15	16 TO 20	21 TO 25	26 TO 30	31 TO 35	36 TO 40	41 TO 45	46 TO 50	> 50	
Calm	5.6												5.6
Variable													
35-36-01		0.4											0.4
02-03-04		0.6	0.8										1.4
05-06-07		1.8	1.0	0.6									3.4
08-09-10		0.6	1.4	1.4	0.8								4.2
11-12-13		0.4	0.4	0.6									1.4
14-15-16		0.2	1.2	0.2	0.2								1.8
17-18-19		0.2	0.4										0.6
20-21-22			0.4										0.4
23-24-25		0.8	1.4										2.2
26-27-28		1.0	1.4	0.2	0.2								2.8
29-30-31		1.2	2.0	0.4	0.2								3.8
32-33-34		0.6	2.0	0.2	0.2								3.0
TOTAL	5.6	7.8	12.4	3.6	1.6								31.0

**MONTH : JULY**

**TIME : 12 UTC**

**MODEL : D**

TABLE: Mean number of occurrences of concurrent wind direction (in 30 degree sector) and wind speed in specified ranges.

Wind Direction in tens of degree	WIND SPEED (KNOTS)												
	0	1 TO 5	6 TO 10	11 TO 15	16 TO 20	21 TO 25	26 TO 30	31 TO 35	36 TO 40	41 TO 45	46 TO 50	> 50	TOTAL
Calm	9.2												9.2
Variable													
35-36-01		0.2	0.2										0.4
02-03-04		0.4	0.2										0.6
05-06-07		1.8	0.6	0.2									2.6
08-09-10		1.4	1.8	1.6	0.2								5.0
11-12-13		0.2	0.4	0.2									0.8
14-15-16		0.2	1.2										1.4
17-18-19		0.8											0.8
20-21-22		1.0	0.2										1.2
23-24-25		0.2	1.0		0.2								1.4
26-27-28		1.4	1.2	0.6	0.2								3.4
29-30-31		1.0	0.4	0.2									1.6
32-33-34		0.6	1.6										2.2
TOTAL	9.2	9.2	8.8	2.8	0.6								30.6

**MONTH : JULY**

**TIME : 15 UTC**

**MODEL : D**

TABLE: Mean number of occurrences of concurrent wind direction (in 30 degree sector) and wind speed in specified ranges.

Wind Direction in tens of degree	WIND SPEED (KNOTS)												TOTAL
	0	1 TO 5	6 TO 10	11 TO 15	16 TO 20	21 TO 25	26 TO 30	31 TO 35	36 TO 40	41 TO 45	46 TO 50	> 50	
Calm	11.2												11.2
Variable													
35-36-01			0.2										0.2
02-03-04		0.4											0.4
05-06-07		1.6	0.6	0.2	0.2								2.6
08-09-10		1.8	2.4	0.2									4.4
11-12-13		0.4	1.0	0.2									1.6
14-15-16		1.4	1.4										2.8
17-18-19		0.6	0.8										1.4
20-21-22		0.4											0.4
23-24-25		1.6	1.8										3.4
26-27-28		0.4	0.4	0.2									1.0
29-30-31		0.2	0.6										0.8
32-33-34		0.2	0.2										0.4
TOTAL	11.2	9.0	9.4	0.8	0.2								30.6

**MONTH : JULY**

**TIME : 18 UTC**

**MODEL : D**

TABLE: Mean number of occurrences of concurrent wind direction (in 30 degree sector) and wind speed in specified ranges.

Wind Direction in tens of degree	WIND SPEED (KNOTS)												TOTAL
	0	1 TO 5	6 TO 10	11 TO 15	16 TO 20	21 TO 25	26 TO 30	31 TO 35	36 TO 40	41 TO 45	46 TO 50	> 50	
Calm	13.0												13.0
Variable													
35-36-01													
02-03-04			0.2										0.2
05-06-07		1.0	1.2										2.2
08-09-10		2.4	1.2	0.6									4.2
11-12-13		0.6	1.4	0.2									2.2
14-15-16		0.8	0.4										1.2
17-18-19		0.2	0.4										0.6
20-21-22		1.8	0.2										2.0
23-24-25		1.2	2.2	0.2									3.6
26-27-28		0.6	0.4										1.0
29-30-31			0.4										0.4
32-33-34		0.2											0.2
TOTAL	13.0	8.8	8.0	1.0									30.8



**MONTH : JULY**

**TIME : 21 UTC**

**MODEL : D**

TABLE: Mean number of occurrences of concurrent wind direction (in 30 degree sector) and wind speed in specified ranges.

Wind Direction in tens of degree	WIND SPEED (KNOTS)												
	0	1 TO 5	6 TO 10	11 TO 15	16 TO 20	21 TO 25	26 TO 30	31 TO 35	36 TO 40	41 TO 45	46 TO 50	> 50	TOTAL
Calm	14.6												14.6
Variable													
35-36-01													
02-03-04		0.2	0.4										0.6
05-06-07		1.8	0.8	0.2									2.8
08-09-10		1.2	2.0	0.6									3.8
11-12-13		1.0	0.4										1.4
14-15-16		1.0	0.8										1.8
17-18-19		0.2	0.6										0.8
20-21-22		0.2	0.2	0.2									0.6
23-24-25		1.4	2.0										3.4
26-27-28		0.2	0.2										0.4
29-30-31		0.2	0.4										0.6
32-33-34		0.2											0.2
TOTAL	14.6	7.6	7.8	1.0									31.0

**MONTH : AUGUST**

**TIME : 0 UTC**

**MODEL : D**

TABLE: Mean number of occurrences of concurrent wind direction (in 30 degree sector) and wind speed in specified ranges.

<b>Wind Direction in tens of degree</b>	<b>WIND SPEED (KNOTS)</b>												
	0	1 TO 5	6 TO 10	11 TO 15	16 TO 20	21 TO 25	26 TO 30	31 TO 35	36 TO 40	41 TO 45	46 TO 50	> 50	TOTAL
Calm	12.6												12.6
Variable													
35-36-01													
02-03-04		0.2											0.2
05-06-07		2.4	2.0										4.4
08-09-10		2.6	2.0										4.6
11-12-13		0.2	0.6										0.8
14-15-16		0.2	1.0										1.2
17-18-19		0.8	0.4										1.2
20-21-22		0.6	0.4										1.0
23-24-25		1.6	0.8										2.4
26-27-28		0.4	0.2										0.6
29-30-31		0.2	0.2										0.4
32-33-34		0.8	0.4										1.2
TOTAL	12.6	10.0	8.0										30.6

**MONTH : AUGUST**

**TIME : 3 UTC**

**MODEL : D**

TABLE: Mean number of occurrences of concurrent wind direction (in 30 degree sector) and wind speed in specified ranges.

<b>Wind Direction in tens of degree</b>	<b>WIND SPEED (KNOTS)</b>												
	0	1 TO 5	6 TO 10	11 TO 15	16 TO 20	21 TO 25	26 TO 30	31 TO 35	36 TO 40	41 TO 45	46 TO 50	> 50	TOTAL
Calm	5.8												5.8
Variable													
35-36-01													
02-03-04		0.2	0.8										1.0
05-06-07		1.6	2.4	0.4									4.4
08-09-10		1.2	2.6	1.2									5.0
11-12-13		0.4	2.4										2.8
14-15-16		0.4	1.0										1.4
17-18-19		0.6	0.4										1.0
20-21-22		0.6	0.6										1.2
23-24-25		0.8	2.6	0.4									3.8
26-27-28		0.6	0.6	0.8									2.0
29-30-31		0.6	1.2										1.8
32-33-34		0.4	0.2										0.6
TOTAL	5.8	7.4	14.8	2.8									30.8

**MONTH : AUGUST**

**TIME : 6 UTC**

**MODEL : D**

TABLE: Mean number of occurrences of concurrent wind direction (in 30 degree sector) and wind speed in specified ranges.

Wind Direction in tens of degree	WIND SPEED (KNOTS)												TOTAL
	0	1 TO 5	6 TO 10	11 TO 15	16 TO 20	21 TO 25	26 TO 30	31 TO 35	36 TO 40	41 TO 45	46 TO 50	> 50	
Calm	5.0												5.0
Variable													
35-36-01		0.2											0.2
02-03-04		0.4	0.4										0.8
05-06-07		1.0	4.0	0.4									5.4
08-09-10		1.0	2.2	1.6	0.2								5.0
11-12-13		1.0	0.8	0.4									2.2
14-15-16		0.6	0.8										1.4
17-18-19		0.2											0.2
20-21-22		0.4											0.4
23-24-25		1.0	1.2	0.2									2.4
26-27-28		0.6	2.0	0.4	0.4								3.4
29-30-31		1.0	1.6										2.6
32-33-34		0.4	1.6										2.0
<b>TOTAL</b>	<b>5.0</b>	<b>7.8</b>	<b>14.6</b>	<b>3.0</b>	<b>0.6</b>								<b>31.0</b>

**MONTH : AUGUST**

**TIME : 9 UTC**

**MODEL : D**

TABLE: Mean number of occurrences of concurrent wind direction (in 30 degree sector) and wind speed in specified ranges.

Wind Direction in tens of degree	WIND SPEED (KNOTS)												
	0	1 TO 5	6 TO 10	11 TO 15	16 TO 20	21 TO 25	26 TO 30	31 TO 35	36 TO 40	41 TO 45	46 TO 50	> 50	TOTAL
Calm	5.6												5.6
Variable													
35-36-01													
02-03-04		0.6	0.8										1.4
05-06-07		2.6	4.6	0.6									7.8
08-09-10		0.6	2.0	1.0									3.6
11-12-13		0.4	0.2	0.2	0.2								1.0
14-15-16		0.2	0.6										0.8
17-18-19			0.2										0.2
20-21-22		0.2		0.2									0.4
23-24-25			1.0										1.0
26-27-28			1.8	0.2	0.2								2.2
29-30-31		0.6	1.2	0.2									2.0
32-33-34		2.8	1.8										4.6
TOTAL	5.6	8.0	14.2	2.4	0.4								30.6

**MONTH : AUGUST**

**TIME : 12 UTC**

**MODEL : D**

TABLE: Mean number of occurrences of concurrent wind direction (in 30 degree sector) and wind speed in specified ranges.

<b>Wind Direction in tens of degree</b>	<b>WIND SPEED (KNOTS)</b>												
	0	1 TO 5	6 TO 10	11 TO 15	16 TO 20	21 TO 25	26 TO 30	31 TO 35	36 TO 40	41 TO 45	46 TO 50	> 50	TOTAL
Calm	8.8												8.8
Variable													
35-36-01													
02-03-04		0.4	0.6	0.2									1.2
05-06-07		3.6	3.0	0.2									6.8
08-09-10		0.4	2.8	0.8									4.0
11-12-13		0.4	0.4										0.8
14-15-16		0.6	0.2										0.8
17-18-19		0.2		0.2									0.4
20-21-22		0.4											0.4
23-24-25		0.4	1.4	0.2									2.0
26-27-28		0.4	0.8	0.6									1.8
29-30-31		0.2	0.2	0.2									0.6
32-33-34		2.0	1.0	0.4									3.4
TOTAL	8.8	9.0	10.4	2.8									31.0

**MONTH : AUGUST**

**TIME : 15 UTC**

**MODEL : D**

TABLE: Mean number of occurrences of concurrent wind direction (in 30 degree sector) and wind speed in specified ranges.

<b>Wind Direction in tens of degree</b>	<b>WIND SPEED (KNOTS)</b>												
	0	1 TO 5	6 TO 10	11 TO 15	16 TO 20	21 TO 25	26 TO 30	31 TO 35	36 TO 40	41 TO 45	46 TO 50	> 50	TOTAL
Calm	11.2												11.2
Variable													
35-36-01		0.2											0.2
02-03-04		0.6	0.6										1.2
05-06-07		3.0	1.8	0.2									5.0
08-09-10		2.8	2.2		0.2								5.2
11-12-13		0.6	0.6										1.2
14-15-16		0.6	0.8										1.4
17-18-19		0.4	0.6										1.0
20-21-22		0.2	0.2										0.4
23-24-25		0.6	0.6	0.2									1.4
26-27-28		0.6	0.4	0.2									1.2
29-30-31		0.6	0.6										1.2
32-33-34			0.2										0.2
TOTAL	11.2	10.2	8.6	0.6	0.2								30.8

**MONTH : AUGUST**

**TIME : 18 UTC**

**MODEL : D**

TABLE: Mean number of occurrences of concurrent wind direction (in 30 degree sector) and wind speed in specified ranges.

Wind Direction in tens of degree	WIND SPEED (KNOTS)												
	0	1 TO 5	6 TO 10	11 TO 15	16 TO 20	21 TO 25	26 TO 30	31 TO 35	36 TO 40	41 TO 45	46 TO 50	> 50	TOTAL
Calm	12.0												12.0
Variable													
35-36-01													
02-03-04		0.4											0.4
05-06-07		2.6	2.4										5.0
08-09-10		2.8	1.8	0.4	0.2								5.2
11-12-13		0.8	0.6										1.4
14-15-16		0.8	0.4										1.2
17-18-19		0.2	0.4										0.6
20-21-22		0.4	0.2										0.6
23-24-25		0.6	0.6	0.2									1.4
26-27-28		0.6	0.6	0.2									1.4
29-30-31			0.6										0.6
32-33-34		0.4	0.4										0.8
TOTAL	12.0	9.6	8.0	0.8	0.2								30.6



**MONTH : AUGUST**

**TIME : 21 UTC**

**MODEL : D**

TABLE: Mean number of occurrences of concurrent wind direction (in 30 degree sector) and wind speed in specified ranges.

<b>Wind Direction in tens of degree</b>	<b>WIND SPEED (KNOTS)</b>												
	0	1 TO 5	6 TO 10	11 TO 15	16 TO 20	21 TO 25	26 TO 30	31 TO 35	36 TO 40	41 TO 45	46 TO 50	> 50	TOTAL
Calm	13.2												13.2
Variable													
35-36-01													
02-03-04		0.4	0.2										0.6
05-06-07		2.4	2.0										4.4
08-09-10		2.4	1.4										3.8
11-12-13		1.6	0.4										2.0
14-15-16		1.0	0.8										1.8
17-18-19		0.4	0.2										0.6
20-21-22		0.4											0.4
23-24-25		0.6	1.0	0.2									1.8
26-27-28		0.4	0.6										1.0
29-30-31		0.2	0.4										0.6
32-33-34		0.2	0.6										0.8
TOTAL	13.2	10.0	7.6	0.2									31.0

**MONTH : SEPTEMBER**

**TIME : 0 UTC**

**MODEL : D**

TABLE: Mean number of occurrences of concurrent wind direction (in 30 degree sector) and wind speed in specified ranges.

Wind Direction in tens of degree	WIND SPEED (KNOTS)												TOTAL
	0	1 TO 5	6 TO 10	11 TO 15	16 TO 20	21 TO 25	26 TO 30	31 TO 35	36 TO 40	41 TO 45	46 TO 50	> 50	
Calm	13.2												13.2
Variable													
35-36-01			0.2										0.2
02-03-04		0.4											0.4
05-06-07		1.8	2.0	0.2									4.0
08-09-10		1.2	1.8	0.2	0.2								3.4
11-12-13		1.0	0.6										1.6
14-15-16		0.8	0.4										1.2
17-18-19		0.8	0.8										1.6
20-21-22		1.0	0.6										1.6
23-24-25			1.2										1.2
26-27-28		0.6	0.2										0.8
29-30-31													
32-33-34			0.4										0.4
TOTAL	13.2	7.6	8.2	0.4	0.2								29.6

**MONTH : SEPTEMBER**

**TIME : 3 UTC**

**MODEL : D**

TABLE: Mean number of occurrences of concurrent wind direction (in 30 degree sector) and wind speed in specified ranges.

Wind Direction in tens of degree	WIND SPEED (KNOTS)												TOTAL
	0	1 TO 5	6 TO 10	11 TO 15	16 TO 20	21 TO 25	26 TO 30	31 TO 35	36 TO 40	41 TO 45	46 TO 50	> 50	
Calm	6.2												6.2
Variable													
35-36-01													
02-03-04		0.2	0.2										0.4
05-06-07		1.6	1.4	0.2									3.2
08-09-10		1.4	2.6	0.2	0.2								4.4
11-12-13		0.8	1.4	0.2									2.4
14-15-16		1.2	0.6										1.8
17-18-19		0.2											0.2
20-21-22		0.4	0.4	0.2									1.0
23-24-25		2.4	2.0	0.2									4.6
26-27-28		1.2	1.8	0.8									3.8
29-30-31		0.8		0.2									1.0
32-33-34		0.4	0.4										0.8
TOTAL	6.2	10.6	10.8	2.0	0.2								29.8

**MONTH : SEPTEMBER**

**TIME : 6 UTC**

**MODEL : D**

TABLE: Mean number of occurrences of concurrent wind direction (in 30 degree sector) and wind speed in specified ranges.

Wind Direction in tens of degree	WIND SPEED (KNOTS)												TOTAL
	0	1 TO 5	6 TO 10	11 TO 15	16 TO 20	21 TO 25	26 TO 30	31 TO 35	36 TO 40	41 TO 45	46 TO 50	> 50	
Calm	5.0												5.0
Variable													
35-36-01													
02-03-04		0.4											0.4
05-06-07		2.0	2.0										4.0
08-09-10		2.0	2.6	0.4	0.4								5.4
11-12-13		0.8	0.8										1.6
14-15-16		0.4											0.4
17-18-19		0.2	0.4										0.6
20-21-22		0.2											0.2
23-24-25		0.8	0.6										1.4
26-27-28		1.0	2.8	1.0									4.8
29-30-31		1.4	1.0	1.6									4.0
32-33-34		1.0	0.6	0.2									1.8
TOTAL	5.0	10.2	10.8	3.2	0.4								29.6

**MONTH : SEPTEMBER**

**TIME : 9 UTC**

**MODEL : D**

TABLE: Mean number of occurrences of concurrent wind direction (in 30 degree sector) and wind speed in specified ranges.

Wind Direction in tens of degree	WIND SPEED (KNOTS)												TOTAL
	0	1 TO 5	6 TO 10	11 TO 15	16 TO 20	21 TO 25	26 TO 30	31 TO 35	36 TO 40	41 TO 45	46 TO 50	> 50	
Calm	5.6												5.6
Variable													
35-36-01		0.8	0.4										1.2
02-03-04		1.2	0.4										1.6
05-06-07		2.6	2.2	0.4									5.2
08-09-10		1.0	2.2	0.6									3.8
11-12-13			0.6										0.6
14-15-16		0.2	0.2										0.4
17-18-19		0.2											0.2
20-21-22		0.2	0.2										0.4
23-24-25		0.6											0.6
26-27-28		0.4	0.6	0.4									1.4
29-30-31		0.8	1.8	1.8									4.4
32-33-34		1.8	2.0	0.8									4.6
TOTAL	5.6	9.8	10.6	4.0									30.0

**MONTH : SEPTEMBER**

**TIME : 12 UTC**

**MODEL : D**

TABLE: Mean number of occurrences of concurrent wind direction (in 30 degree sector) and wind speed in specified ranges.

Wind Direction in tens of degree	WIND SPEED (KNOTS)												TOTAL
	0	1 TO 5	6 TO 10	11 TO 15	16 TO 20	21 TO 25	26 TO 30	31 TO 35	36 TO 40	41 TO 45	46 TO 50	> 50	
Calm	8.6												8.6
Variable													
35-36-01		0.2											0.2
02-03-04		0.8	0.4										1.2
05-06-07		4.4	2.0										6.4
08-09-10		1.6	0.8	0.2	0.2								2.8
11-12-13		0.2	0.8										1.0
14-15-16		0.2	0.4										0.6
17-18-19		0.2	0.2										0.4
20-21-22			0.4										0.4
23-24-25		0.4	0.4										0.8
26-27-28		0.4	1.4										1.8
29-30-31		0.8	1.2	0.2									2.2
32-33-34		1.4	1.8										3.2
TOTAL	8.6	10.6	9.8	0.4	0.2								29.6

**MONTH : SEPTEMBER**

**TIME : 15 UTC**

**MODEL : D**

TABLE: Mean number of occurrences of concurrent wind direction (in 30 degree sector) and wind speed in specified ranges.

Wind Direction in tens of degree	WIND SPEED (KNOTS)												TOTAL
	0	1 TO 5	6 TO 10	11 TO 15	16 TO 20	21 TO 25	26 TO 30	31 TO 35	36 TO 40	41 TO 45	46 TO 50	> 50	
Calm	13.2												13.2
Variable													
35-36-01													
02-03-04		0.2											0.2
05-06-07		3.2	1.4	0.2									4.8
08-09-10		1.2	1.4	0.8									3.4
11-12-13		0.8	0.4										1.2
14-15-16		0.2	0.6										0.8
17-18-19		0.6											0.6
20-21-22		0.4	0.6										1.0
23-24-25		0.6	0.6										1.2
26-27-28		0.4	1.2										1.6
29-30-31		0.4	0.2										0.6
32-33-34		0.2	0.8										1.0
TOTAL	13.2	8.2	7.2	1.0									29.6

**MONTH : SEPTEMBER**

**TIME : 18 UTC**

**MODEL : D**

TABLE: Mean number of occurrences of concurrent wind direction (in 30 degree sector) and wind speed in specified ranges.

Wind Direction in tens of degree	WIND SPEED (KNOTS)												TOTAL
	0	1 TO 5	6 TO 10	11 TO 15	16 TO 20	21 TO 25	26 TO 30	31 TO 35	36 TO 40	41 TO 45	46 TO 50	> 50	
Calm	13.2												13.2
Variable													
35-36-01													
02-03-04		0.4											0.4
05-06-07		2.4	1.0	0.2									3.6
08-09-10		2.4	1.6	0.6									4.6
11-12-13		0.2	0.8										1.0
14-15-16		0.6	0.8										1.4
17-18-19		1.0	1.2										2.2
20-21-22		0.4	0.4										0.8
23-24-25		0.6	1.0										1.6
26-27-28		0.2	0.2										0.4
29-30-31			0.2										0.2
32-33-34		0.2	0.4										0.6
TOTAL	13.2	8.4	7.6	0.8									30.0



**MONTH : SEPTEMBER**

**TIME : 21 UTC**

**MODEL : D**

TABLE: Mean number of occurrences of concurrent wind direction (in 30 degree sector) and wind speed in specified ranges.

Wind Direction in tens of degree	WIND SPEED (KNOTS)												TOTAL
	0	1 TO 5	6 TO 10	11 TO 15	16 TO 20	21 TO 25	26 TO 30	31 TO 35	36 TO 40	41 TO 45	46 TO 50	> 50	
Calm	15.6												15.6
Variable													
35-36-01													
02-03-04													
05-06-07		1.2	2.6	0.2									4.0
08-09-10		1.0	0.8	0.2									2.0
11-12-13		0.6	0.4										1.0
14-15-16		1.0											1.0
17-18-19		0.6	1.2										1.8
20-21-22		0.8											0.8
23-24-25		0.6	1.6										2.2
26-27-28		0.4	0.6										1.0
29-30-31													
32-33-34		0.2	0.4										0.6
TOTAL	15.6	6.4	7.6	0.4									30.0

**MONTH : OCTOBER**

**TIME : 0 UTC**

**MODEL : D**

TABLE: Mean number of occurrences of concurrent wind direction (in 30 degree sector) and wind speed in specified ranges.

Wind Direction in tens of degree	WIND SPEED (KNOTS)												TOTAL
	0	1 TO 5	6 TO 10	11 TO 15	16 TO 20	21 TO 25	26 TO 30	31 TO 35	36 TO 40	41 TO 45	46 TO 50	> 50	
Calm	16.2												16.2
Variable													
35-36-01													
02-03-04		0.2											0.2
05-06-07		0.4	0.2										0.6
08-09-10			0.2										0.2
11-12-13		0.4	1.0										1.4
14-15-16		1.2	1.6										2.8
17-18-19		0.6	0.8										1.4
20-21-22			0.2										0.2
23-24-25		0.4	0.2										0.6
26-27-28		0.2		0.2									0.4
29-30-31													
32-33-34		0.2											0.2
TOTAL	16.2	3.6	4.2	0.2									24.2

**MONTH : OCTOBER**

**TIME : 3 UTC**

**MODEL : D**

TABLE: Mean number of occurrences of concurrent wind direction (in 30 degree sector) and wind speed in specified ranges.

Wind Direction in tens of degree	WIND SPEED (KNOTS)												TOTAL
	0	1 TO 5	6 TO 10	11 TO 15	16 TO 20	21 TO 25	26 TO 30	31 TO 35	36 TO 40	41 TO 45	46 TO 50	> 50	
Calm	9.4												9.4
Variable													
35-36-01		0.2											0.2
02-03-04													
05-06-07		0.2	0.4										0.6
08-09-10		0.6	0.2										0.8
11-12-13		0.6	0.6										1.2
14-15-16		0.6	0.2										0.8
17-18-19		0.6	0.8										1.4
20-21-22		1.0	3.2										4.2
23-24-25		2.2	0.8										3.0
26-27-28		0.8	0.2										1.0
29-30-31		0.6	0.4										1.0
32-33-34		0.2	0.4	0.2									0.8
TOTAL	9.4	7.6	7.2	0.2									24.4

**MONTH : OCTOBER**

**TIME : 6 UTC**

**MODEL : D**

TABLE: Mean number of occurrences of concurrent wind direction (in 30 degree sector) and wind speed in specified ranges.

Wind Direction in tens of degree	WIND SPEED (KNOTS)												TOTAL
	0	1 TO 5	6 TO 10	11 TO 15	16 TO 20	21 TO 25	26 TO 30	31 TO 35	36 TO 40	41 TO 45	46 TO 50	> 50	
Calm	6.4												6.4
Variable													
35-36-01		0.2	0.6										0.8
02-03-04			0.2										0.2
05-06-07		1.2	0.4	0.4									2.0
08-09-10		1.8	0.8										2.6
11-12-13		0.2											0.2
14-15-16		0.2											0.2
17-18-19													
20-21-22		0.2	0.4										0.6
23-24-25		1.2	0.4										1.6
26-27-28		1.0	2.0	0.6									3.6
29-30-31		0.6	1.4										2.0
32-33-34		1.6	2.8										4.4
TOTAL	6.4	8.2	9.0	1.0									24.6

**MONTH : OCTOBER**

**TIME : 9 UTC**

**MODEL : D**

TABLE: Mean number of occurrences of concurrent wind direction (in 30 degree sector) and wind speed in specified ranges.

Wind Direction in tens of degree	WIND SPEED (KNOTS)												TOTAL
	0	1 TO 5	6 TO 10	11 TO 15	16 TO 20	21 TO 25	26 TO 30	31 TO 35	36 TO 40	41 TO 45	46 TO 50	> 50	
Calm	6.2												6.2
Variable													
35-36-01		0.8	1.2										2.0
02-03-04		0.8	0.2										1.0
05-06-07		2.2	0.6	0.2									3.0
08-09-10		0.4	0.2	0.2									0.8
11-12-13			0.2										0.2
14-15-16													
17-18-19		0.2	0.2										0.4
20-21-22													
23-24-25		0.2	0.4										0.6
26-27-28		0.6	1.0	0.6									2.2
29-30-31		0.4	1.0	0.4									1.8
32-33-34		3.0	2.8	0.2									6.0
TOTAL	6.2	8.6	7.8	1.6									24.2

**MONTH : OCTOBER**

**TIME : 12 UTC**

**MODEL : D**

TABLE: Mean number of occurrences of concurrent wind direction (in 30 degree sector) and wind speed in specified ranges.

Wind Direction in tens of degree	WIND SPEED (KNOTS)												TOTAL
	0	1 TO 5	6 TO 10	11 TO 15	16 TO 20	21 TO 25	26 TO 30	31 TO 35	36 TO 40	41 TO 45	46 TO 50	> 50	
Calm	14.0												14.0
Variable													
35-36-01		1.2	0.6										1.8
02-03-04			0.2										0.2
05-06-07		0.6	0.8	0.2									1.6
08-09-10		1.0											1.0
11-12-13		0.2	0.2										0.4
14-15-16													
17-18-19													
20-21-22													
23-24-25			0.2										0.2
26-27-28		0.2	0.8										1.0
29-30-31		0.4	0.2										0.6
32-33-34		2.6	1.4										4.0
TOTAL	14.0	6.2	4.4	0.2									24.8

**MONTH : OCTOBER**

**TIME : 15 UTC**

**MODEL : D**

TABLE: Mean number of occurrences of concurrent wind direction (in 30 degree sector) and wind speed in specified ranges.

Wind Direction in tens of degree	WIND SPEED (KNOTS)												TOTAL
	0	1 TO 5	6 TO 10	11 TO 15	16 TO 20	21 TO 25	26 TO 30	31 TO 35	36 TO 40	41 TO 45	46 TO 50	> 50	
Calm	16.2												16.2
Variable													
35-36-01													
02-03-04		0.6	0.6										1.2
05-06-07		0.6	0.2										0.8
08-09-10		0.2	0.8										1.0
11-12-13			0.2										0.2
14-15-16		0.8	0.2										1.0
17-18-19		0.2	1.0										1.2
20-21-22		0.4	0.2										0.6
23-24-25		0.4	0.6										1.0
26-27-28		0.6	0.4										1.0
29-30-31			0.4										0.4
32-33-34													
TOTAL	16.2	3.8	4.6										24.6

**MONTH : OCTOBER**

**TIME : 18 UTC**

**MODEL : D**

TABLE: Mean number of occurrences of concurrent wind direction (in 30 degree sector) and wind speed in specified ranges.

Wind Direction in tens of degree	WIND SPEED (KNOTS)												TOTAL
	0	1 TO 5	6 TO 10	11 TO 15	16 TO 20	21 TO 25	26 TO 30	31 TO 35	36 TO 40	41 TO 45	46 TO 50	> 50	
Calm	17.4												17.4
Variable													
35-36-01													
02-03-04		0.2											0.2
05-06-07		0.2	0.6										0.8
08-09-10		0.8											0.8
11-12-13		0.4	0.6										1.0
14-15-16		0.8	1.0										1.8
17-18-19		0.2	1.0										1.2
20-21-22													
23-24-25			0.2										0.2
26-27-28		0.4											0.4
29-30-31			0.2										0.2
32-33-34			0.2										0.2
TOTAL	17.4	3.0	3.8										24.2



**MONTH : OCTOBER**

**TIME : 21 UTC**

**MODEL : D**

TABLE: Mean number of occurrences of concurrent wind direction (in 30 degree sector) and wind speed in specified ranges.

Wind Direction in tens of degree	WIND SPEED (KNOTS)												
	0	1 TO 5	6 TO 10	11 TO 15	16 TO 20	21 TO 25	26 TO 30	31 TO 35	36 TO 40	41 TO 45	46 TO 50	> 50	TOTAL
Calm	18.4												18.4
Variable													
35-36-01													
02-03-04													
05-06-07		0.2	0.4										0.6
08-09-10		0.4	0.6										1.0
11-12-13		0.4	0.2										0.6
14-15-16		0.6	1.2										1.8
17-18-19		0.2	0.6										0.8
20-21-22		0.2	0.2										0.4
23-24-25		0.2	0.4										0.6
26-27-28		0.4											0.4
29-30-31													
32-33-34													
TOTAL	18.4	2.6	3.6										24.6

**MONTH : NOVEMBER**

**TIME : 0 UTC**

**MODEL : D**

TABLE: Mean number of occurrences of concurrent wind direction (in 30 degree sector) and wind speed in specified ranges.

Wind Direction in tens of degree	WIND SPEED (KNOTS)												
	0	1 TO 5	6 TO 10	11 TO 15	16 TO 20	21 TO 25	26 TO 30	31 TO 35	36 TO 40	41 TO 45	46 TO 50	> 50	TOTAL
Calm	14.4												14.4
Variable													
35-36-01													
02-03-04													
05-06-07													
08-09-10		0.2											0.2
11-12-13		0.8	1.8										2.6
14-15-16		2.4	0.8										3.2
17-18-19		1.4	0.6										2.0
20-21-22		0.2	0.2										0.4
23-24-25			0.4										0.4
26-27-28		0.4											0.4
29-30-31													
32-33-34		0.2											0.2
TOTAL	14.4	5.6	3.8										23.8

**MONTH : NOVEMBER**

**TIME : 3 UTC**

**MODEL : D**

TABLE: Mean number of occurrences of concurrent wind direction (in 30 degree sector) and wind speed in specified ranges.

Wind Direction in tens of degree	WIND SPEED (KNOTS)												TOTAL
	0	1 TO 5	6 TO 10	11 TO 15	16 TO 20	21 TO 25	26 TO 30	31 TO 35	36 TO 40	41 TO 45	46 TO 50	> 50	
Calm	9.8												9.8
Variable													
35-36-01													
02-03-04													
05-06-07													
08-09-10		0.2											0.2
11-12-13		0.8	0.2										1.0
14-15-16		0.6	0.4										1.0
17-18-19		1.8	0.6										2.4
20-21-22		2.0	1.8										3.8
23-24-25		2.0	1.4										3.4
26-27-28		1.2	0.4										1.6
29-30-31		0.4	0.2										0.6
32-33-34		0.2											0.2
TOTAL	9.8	9.2	5.0										24.0

**MONTH : NOVEMBER**

**TIME : 6 UTC**

**MODEL : D**

TABLE: Mean number of occurrences of concurrent wind direction (in 30 degree sector) and wind speed in specified ranges.

Wind Direction in tens of degree	WIND SPEED (KNOTS)												TOTAL
	0	1 TO 5	6 TO 10	11 TO 15	16 TO 20	21 TO 25	26 TO 30	31 TO 35	36 TO 40	41 TO 45	46 TO 50	> 50	
Calm	6.0												6.0
Variable													
35-36-01		0.4	0.2	0.2									0.8
02-03-04		0.4											0.4
05-06-07		0.6	1.0										1.6
08-09-10		0.8	0.4										1.2
11-12-13		0.4	0.2										0.6
14-15-16		0.2											0.2
17-18-19		0.2											0.2
20-21-22			0.4										0.4
23-24-25		0.4	1.0										1.4
26-27-28		0.8	1.4	0.2									2.4
29-30-31		1.4	2.4	0.4									4.2
32-33-34		2.2	2.0										4.2
TOTAL	6.0	7.8	9.0	0.8									23.6

**MONTH : NOVEMBER**

**TIME : 9 UTC**

**MODEL : D**

TABLE: Mean number of occurrences of concurrent wind direction (in 30 degree sector) and wind speed in specified ranges.

Wind Direction in tens of degree	WIND SPEED (KNOTS)												
	0	1 TO 5	6 TO 10	11 TO 15	16 TO 20	21 TO 25	26 TO 30	31 TO 35	36 TO 40	41 TO 45	46 TO 50	> 50	TOTAL
Calm	5.8												5.8
Variable													
35-36-01		0.6	0.4										1.0
02-03-04		0.4	0.8										1.2
05-06-07		0.8	0.2										1.0
08-09-10		1.0	0.2										1.2
11-12-13		0.4											0.4
14-15-16													
17-18-19													
20-21-22		0.2											0.2
23-24-25		0.4											0.4
26-27-28		0.2	1.8		0.2								2.2
29-30-31		0.6	1.4	1.8									3.8
32-33-34		2.6	3.6	0.6									6.8
TOTAL	5.8	7.2	8.4	2.4	0.2								24.0

**MONTH : NOVEMBER**

**TIME : 12 UTC**

**MODEL : D**

TABLE: Mean number of occurrences of concurrent wind direction (in 30 degree sector) and wind speed in specified ranges.

Wind Direction in tens of degree	WIND SPEED (KNOTS)												
	0	1 TO 5	6 TO 10	11 TO 15	16 TO 20	21 TO 25	26 TO 30	31 TO 35	36 TO 40	41 TO 45	46 TO 50	> 50	TOTAL
Calm	12.8												12.8
Variable													
35-36-01		1.2	0.6										1.8
02-03-04		0.4	1.2										1.6
05-06-07		0.2											0.2
08-09-10													
11-12-13													
14-15-16													
17-18-19													
20-21-22		0.2											0.2
23-24-25													
26-27-28		1.0											1.0
29-30-31		1.4	0.4	0.2									2.0
32-33-34		2.6	1.4										4.0
TOTAL	12.8	7.0	3.6	0.2									23.6

**MONTH : NOVEMBER**

**TIME : 15 UTC**

**MODEL : D**

TABLE: Mean number of occurrences of concurrent wind direction (in 30 degree sector) and wind speed in specified ranges.

Wind Direction in tens of degree	WIND SPEED (KNOTS)												TOTAL
	0	1 TO 5	6 TO 10	11 TO 15	16 TO 20	21 TO 25	26 TO 30	31 TO 35	36 TO 40	41 TO 45	46 TO 50	> 50	
Calm	17.6												17.6
Variable													
35-36-01		0.4											0.4
02-03-04		0.4											0.4
05-06-07			0.6										0.6
08-09-10													
11-12-13		0.2	0.2										0.4
14-15-16		0.4	0.4										0.8
17-18-19			0.4										0.4
20-21-22		0.2	0.6										0.8
23-24-25			0.6										0.6
26-27-28		0.2	0.2										0.4
29-30-31		0.2											0.2
32-33-34		0.8	0.6										1.4
TOTAL	17.6	2.8	3.6										24.0

**MONTH : NOVEMBER**

**TIME : 18 UTC**

**MODEL : D**

TABLE: Mean number of occurrences of concurrent wind direction (in 30 degree sector) and wind speed in specified ranges.

Wind Direction in tens of degree	WIND SPEED (KNOTS)												
	0	1 TO 5	6 TO 10	11 TO 15	16 TO 20	21 TO 25	26 TO 30	31 TO 35	36 TO 40	41 TO 45	46 TO 50	> 50	TOTAL
Calm	16.2												16.2
Variable													
35-36-01													
02-03-04													
05-06-07		0.2											0.2
08-09-10		0.4											0.4
11-12-13			0.4										0.4
14-15-16		0.8	0.8										1.6
17-18-19		1.2	0.2										1.4
20-21-22		1.0	1.4										2.4
23-24-25			0.4										0.4
26-27-28		0.4											0.4
29-30-31		0.2	0.2										0.4
32-33-34		0.2											0.2
TOTAL	16.2	4.4	3.4										24.0



**MONTH : NOVEMBER**

**TIME : 21 UTC**

**MODEL : D**

TABLE: Mean number of occurrences of concurrent wind direction (in 30 degree sector) and wind speed in specified ranges.

Wind Direction in tens of degree	WIND SPEED (KNOTS)												
	0	1 TO 5	6 TO 10	11 TO 15	16 TO 20	21 TO 25	26 TO 30	31 TO 35	36 TO 40	41 TO 45	46 TO 50	> 50	TOTAL
Calm	15.2												15.2
Variable													
35-36-01		0.2											0.2
02-03-04													
05-06-07		0.2											0.2
08-09-10		0.2	0.2										0.4
11-12-13		0.8	0.2										1.0
14-15-16		1.4	0.6										2.0
17-18-19		1.6	1.4										3.0
20-21-22			0.2										0.2
23-24-25		0.8											0.8
26-27-28		0.2	0.2										0.4
29-30-31		0.2											0.2
32-33-34		0.2											0.2
TOTAL	15.2	5.8	2.8										23.8

**MONTH : DECEMBER**

**TIME : 0 UTC**

**MODEL : D**

TABLE: Mean number of occurrences of concurrent wind direction (in 30 degree sector) and wind speed in specified ranges.

Wind Direction in tens of degree	WIND SPEED (KNOTS)												TOTAL
	0	1 TO 5	6 TO 10	11 TO 15	16 TO 20	21 TO 25	26 TO 30	31 TO 35	36 TO 40	41 TO 45	46 TO 50	> 50	
Calm	17.6												17.6
Variable													
35-36-01													
02-03-04		0.2											0.2
05-06-07													
08-09-10		0.2											0.2
11-12-13		1.4	0.8										2.2
14-15-16		4.0	1.0										5.0
17-18-19		1.2	1.2										2.4
20-21-22		0.6											0.6
23-24-25		0.6											0.6
26-27-28		0.4	0.2										0.6
29-30-31		0.4	0.2										0.6
32-33-34		0.8	0.2										1.0
TOTAL	17.6	9.8	3.6										31.0

**MONTH : DECEMBER**

**TIME : 3 UTC**

**MODEL : D**

TABLE: Mean number of occurrences of concurrent wind direction (in 30 degree sector) and wind speed in specified ranges.

<b>Wind Direction in tens of degree</b>	<b>WIND SPEED (KNOTS)</b>												
	0	1 TO 5	6 TO 10	11 TO 15	16 TO 20	21 TO 25	26 TO 30	31 TO 35	36 TO 40	41 TO 45	46 TO 50	> 50	TOTAL
Calm	11.0												11.0
Variable													
35-36-01		0.2											0.2
02-03-04													
05-06-07		0.2											0.2
08-09-10		0.6	0.6										1.2
11-12-13		2.6	0.4										3.0
14-15-16		3.2	0.8										4.0
17-18-19		0.8	1.0										1.8
20-21-22		2.0	1.2										3.2
23-24-25		1.8	1.2										3.0
26-27-28		0.8	0.6										1.4
29-30-31		0.4	0.4										0.8
32-33-34		0.6	0.6										1.2
TOTAL	11.0	13.2	6.8										31.0

**MONTH : DECEMBER**

**TIME : 6 UTC**

**MODEL : D**

TABLE: Mean number of occurrences of concurrent wind direction (in 30 degree sector) and wind speed in specified ranges.

<b>Wind Direction in tens of degree</b>	<b>WIND SPEED (KNOTS)</b>												
	0	1 TO 5	6 TO 10	11 TO 15	16 TO 20	21 TO 25	26 TO 30	31 TO 35	36 TO 40	41 TO 45	46 TO 50	> 50	TOTAL
Calm	4.8												4.8
Variable													
35-36-01		1.0	0.8										1.8
02-03-04		0.6	0.2										0.8
05-06-07		1.0	0.2										1.2
08-09-10		0.4	0.4										0.8
11-12-13		0.6	0.2										0.8
14-15-16			0.2										0.2
17-18-19													
20-21-22		0.4	0.4										0.8
23-24-25		1.2											1.2
26-27-28		2.6	3.8	0.6									7.0
29-30-31		2.0	4.6	0.6									7.2
32-33-34		3.0	1.0	0.2									4.2
TOTAL	4.8	12.8	11.8	1.4									30.8

**MONTH : DECEMBER**

**TIME : 9 UTC**

**MODEL : D**

TABLE: Mean number of occurrences of concurrent wind direction (in 30 degree sector) and wind speed in specified ranges.

<b>Wind Direction in tens of degree</b>	<b>WIND SPEED (KNOTS)</b>												
	0	1 TO 5	6 TO 10	11 TO 15	16 TO 20	21 TO 25	26 TO 30	31 TO 35	36 TO 40	41 TO 45	46 TO 50	> 50	TOTAL
Calm	4.2												4.2
Variable													
35-36-01		0.6	1.0										1.6
02-03-04		1.2	0.8										2.0
05-06-07		1.0	0.6										1.6
08-09-10		0.8											0.8
11-12-13													
14-15-16		0.2											0.2
17-18-19													
20-21-22													
23-24-25			0.4										0.4
26-27-28		2.6	2.0	0.4									5.0
29-30-31		1.0	4.0	1.2									6.2
32-33-34		4.6	3.6	0.6									8.8
TOTAL	4.2	12.0	12.4	2.2									30.8

**MONTH : DECEMBER**

**TIME : 12 UTC**

**MODEL : D**

TABLE: Mean number of occurrences of concurrent wind direction (in 30 degree sector) and wind speed in specified ranges.

Wind Direction in tens of degree	WIND SPEED (KNOTS)												TOTAL
	0	1 TO 5	6 TO 10	11 TO 15	16 TO 20	21 TO 25	26 TO 30	31 TO 35	36 TO 40	41 TO 45	46 TO 50	> 50	
Calm	16.4												16.4
Variable													
35-36-01		1.0	0.2										1.2
02-03-04		1.0	0.2										1.2
05-06-07		0.4	0.2										0.6
08-09-10		0.4	0.2										0.6
11-12-13													
14-15-16													
17-18-19			0.2										0.2
20-21-22			0.2										0.2
23-24-25		0.8	0.2										1.0
26-27-28		1.2	0.6										1.8
29-30-31		2.6	1.2										3.8
32-33-34		2.4	1.2										3.6
TOTAL	16.4	9.8	4.4										30.6

**MONTH : DECEMBER**

**TIME : 15 UTC**

**MODEL : D**

TABLE: Mean number of occurrences of concurrent wind direction (in 30 degree sector) and wind speed in specified ranges.

Wind Direction in tens of degree	WIND SPEED (KNOTS)												TOTAL
	0	1 TO 5	6 TO 10	11 TO 15	16 TO 20	21 TO 25	26 TO 30	31 TO 35	36 TO 40	41 TO 45	46 TO 50	> 50	
Calm	19.8												19.8
Variable													
35-36-01		0.4	0.2										0.6
02-03-04													
05-06-07		0.2	0.6										0.8
08-09-10		0.2											0.2
11-12-13		0.2	0.4										0.6
14-15-16			0.6										0.6
17-18-19		0.4											0.4
20-21-22		0.2	0.2										0.4
23-24-25		0.8											0.8
26-27-28		1.8	0.6										2.4
29-30-31		1.2	0.4										1.6
32-33-34		2.2	0.4										2.6
TOTAL	19.8	7.6	3.4										30.8

**MONTH : DECEMBER**

**TIME : 18 UTC**

**MODEL : D**

TABLE: Mean number of occurrences of concurrent wind direction (in 30 degree sector) and wind speed in specified ranges.

Wind Direction in tens of degree	WIND SPEED (KNOTS)												TOTAL
	0	1 TO 5	6 TO 10	11 TO 15	16 TO 20	21 TO 25	26 TO 30	31 TO 35	36 TO 40	41 TO 45	46 TO 50	> 50	
Calm	20.2												20.2
Variable													
35-36-01													
02-03-04													
05-06-07		0.2	0.2										0.4
08-09-10		0.4	0.2										0.6
11-12-13		0.8	0.2										1.0
14-15-16		1.0	1.0										2.0
17-18-19		0.8	0.6										1.4
20-21-22		0.8	0.6										1.4
23-24-25		1.2	0.4										1.6
26-27-28		0.8											0.8
29-30-31		0.6	0.4										1.0
32-33-34		0.6											0.6
TOTAL	20.2	7.2	3.6										31.0



**MONTH : DECEMBER**

**TIME : 21 UTC**

**MODEL : D**

TABLE: Mean number of occurrences of concurrent wind direction (in 30 degree sector) and wind speed in specified ranges.

Wind Direction in tens of degree	WIND SPEED (KNOTS)												
	0	1 TO 5	6 TO 10	11 TO 15	16 TO 20	21 TO 25	26 TO 30	31 TO 35	36 TO 40	41 TO 45	46 TO 50	> 50	TOTAL
Calm	19.6												19.6
Variable													
35-36-01													
02-03-04													
05-06-07													
08-09-10		0.8											0.8
11-12-13		0.8	0.6										1.4
14-15-16		1.0	0.6	0.2									1.8
17-18-19		1.2	1.2										2.4
20-21-22		1.4											1.4
23-24-25		0.8											0.8
26-27-28		1.0											1.0
29-30-31		0.2	0.2										0.4
32-33-34		1.2	0.2										1.4
TOTAL	19.6	8.4	2.8	0.2									31.0

**MONTH : JANUARY**

**MODEL : E**

TABLE: Mean number of occurrence of screen temperature (in ranges of 5 degrees) at specified time.

Time UTC	TEMPERATURE (°C)												Total
	-10 to - 5	-5 to 0	0 to 5	5 to 10	10 to 15	15 to 20	20 to 25	25 to 30	30 to 35	35 to 40	40 to 45	45 to 50	
0			0.4	16.6	10.6	3.4							31.0
1			1.2	15.8	11.0	2.6							30.6
2			0.6	14.4	12.4	3.4							30.8
3				4.8	19.8	6.4							31.0
4				1.6	10.8	16.8	1.8						31.0
5				0.2	6.4	16.6	7.4						30.6
6					4.0	12.8	12.8	0.8					30.4
7					1.4	8.8	18.4	1.8					30.4
8					0.4	7.8	19.8	3.0					31.0
9					0.2	6.6	19.4	4.6					30.8
10					0.2	7.0	19.4	4.4					31.0
11					0.2	9.6	19.0	2.2					31.0
12					1.0	15.4	13.6	0.6					30.6
13					4.6	21.4	4.2	0.2					30.4
14					12.6	16.0	2.2						30.8
15				0.8	17.6	11.2	1.2						30.8
16				3.4	19.0	7.8	0.8						31.0
17				5.0	20.4	5.6							31.0
18				6.8	19.8	4.4							31.0
19				8.8	18.0	4.0							30.8
20				11.4	16.0	3.4							30.8
21			0.2	13.0	14.4	3.0							30.6
22				14.6	13.2	3.0							30.8
23			0.2	15.8	11.6	3.0							30.6
<b>Total</b>			2.6	133.0	245.6	200.0	140.0	17.6					738.8

**MONTH : FEBRUARY**

**MODEL : E**

TABLE: Mean number of occurrence of screen temperature (in ranges of 5 degrees) at specified time.

Time UTC	TEMPERATURE (°C)												Total
	-10 to - 5	-5 to 0	0 to 5	5 to 10	10 to 15	15 to 20	20 to 25	25 to 30	30 to 35	35 to 40	40 to 45	45 to 50	
0				4.8	18.2	5.2							28.2
1				5.6	17.2	5.2							28.0
2				3.6	14.6	9.2	0.4						27.8
3					7.6	16.8	3.8						28.2
4					0.2	11.8	14.2	1.6					27.8
5						5.0	18.0	5.0	0.2				28.2
6						2.4	13.6	10.8	1.4				28.2
7						1.4	9.6	15.0	1.8				27.8
8						0.8	8.0	16.6	2.0				27.4
9						0.4	7.6	16.8	3.2				28.0
10						0.8	7.6	16.6	2.8				27.8
11						0.4	9.4	16.4	1.6				27.8
12						1.6	14.8	10.8	0.8				28.0
13						5.4	17.6	5.0					28.0
14					0.8	13.0	12.6	1.4					27.8
15					2.8	17.6	7.2	0.4					28.0
16					5.4	18.6	4.0	0.2					28.2
17					8.0	17.4	2.6						28.0
18				0.2	11.2	15.6	1.2						28.2
19				0.4	13.0	13.2	1.2						27.8
20				0.4	14.6	12.2	0.8						28.0
21				1.0	16.0	10.4	0.8						28.2
22				2.8	15.6	9.4	0.4						28.2
23				3.4	17.0	7.8							28.2
<b>Total</b>				22.2	162.2	201.6	155.4	116.6	13.8				671.8

**MONTH : MARCH**

**MODEL : E**

TABLE: Mean number of occurrence of screen temperature (in ranges of 5 degrees) at specified time.

Time UTC	TEMPERATURE (°C)												Total
	-10 to - 5	-5 to 0	0 to 5	5 to 10	10 to 15	15 to 20	20 to 25	25 to 30	30 to 35	35 to 40	40 to 45	45 to 50	
0					5.4	21.8	3.6						30.8
1					4.8	21.6	4.4						30.8
2					1.0	13.8	14.4	1.4					30.6
3						3.2	19.2	8.2					30.6
4						0.6	8.8	16.0	5.2				30.6
5						0.6	5.0	13.2	11.2	0.8			30.8
6						0.4	2.4	10.6	15.4	2.2			31.0
7						0.4	1.6	8.2	16.0	4.6	0.2		31.0
8						0.4	1.4	7.4	15.8	5.6	0.2		30.8
9						0.2	1.2	7.0	16.4	5.4	0.6		30.8
10						0.2	1.2	6.8	16.6	5.4	0.6		30.8
11						0.2	1.2	9.4	15.0	5.2			31.0
12						0.2	1.2	12.4	14.4	2.8			31.0
13							6.0	18.2	6.2	0.2			30.6
14						1.0	14.6	13.8	1.6				31.0
15						2.6	20.6	7.0	0.8				31.0
16					0.2	6.4	19.2	5.2					31.0
17					0.4	9.0	18.0	3.4					30.8
18					0.6	12.0	15.8	2.2					30.6
19					0.6	14.8	14.0	1.6					31.0
20					1.8	15.2	12.6	1.2					30.8
21					2.6	17.4	10.2	0.8					31.0
22					2.8	20.2	7.6	0.4					31.0
23					3.2	21.2	6.6						31.0
<b>Total</b>					23.4	183.4	210.8	154.4	134.6	32.2	1.6		740.4

**MONTH : APRIL**

**MODEL : E**

TABLE: Mean number of occurrence of screen temperature (in ranges of 5 degrees) at specified time.

Time UTC	TEMPERATURE (°C)												Total
	-10 to - 5	-5 to 0	0 to 5	5 to 10	10 to 15	15 to 20	20 to 25	25 to 30	30 to 35	35 to 40	40 to 45	45 to 50	
0						3.8	20.8	5.0					29.6
1						2.6	17.8	9.2					29.6
2							7.6	19.4	2.4				29.4
3							0.8	16.2	12.0	0.6			29.6
4								6.2	18.0	5.2			29.4
5								2.6	15.4	11.4	0.2		29.6
6							0.2	1.0	10.0	16.0	2.4		29.6
7								1.2	6.4	18.4	3.8		29.8
8								1.2	5.8	17.6	5.0		29.6
9							0.2	1.0	4.4	16.4	7.4		29.4
10								1.0	4.6	16.8	7.2		29.6
11								1.0	5.8	17.8	5.2		29.8
12								1.4	9.8	17.0	1.8		30.0
13							0.4	3.0	15.8	10.2	0.2		29.6
14							0.4	8.4	17.8	3.0			29.6
15							1.2	15.2	13.2	0.4			30.0
16							2.4	19.4	8.2				30.0
17							4.6	19.8	5.6				30.0
18						0.2	7.4	18.4	3.6				29.6
19						0.4	9.6	17.6	2.0				29.6
20						0.8	11.4	17.0	0.8				30.0
21						1.4	13.4	14.4	0.6				29.8
22						1.8	15.4	12.2					29.4
23						1.6	18.6	8.8					29.0
<b>Total</b>						12.6	132.2	220.6	162.2	150.8	33.2		711.6

**MONTH : MAY**

**MODEL : E**

TABLE: Mean number of occurrence of screen temperature (in ranges of 5 degrees) at specified time.

Time UTC	TEMPERATURE (°C)												Total
	-10 to - 5	-5 to 0	0 to 5	5 to 10	10 to 15	15 to 20	20 to 25	25 to 30	30 to 35	35 to 40	40 to 45	45 to 50	
0							8.4	21.6	0.6				30.6
1							5.4	21.6	4.0				31.0
2							2.0	13.2	15.0	0.4			30.6
3							0.6	7.8	17.0	5.4			30.8
4							0.2	4.8	14.6	10.4	0.6		30.6
5								3.4	10.6	14.0	2.6		30.6
6								2.2	8.2	13.6	7.0		31.0
7								1.8	5.6	12.6	10.2	0.4	30.6
8								1.8	4.8	12.8	10.6	0.4	30.4
9							0.2	1.4	5.2	10.6	13.0	0.4	30.8
10							0.2	1.0	6.4	10.8	12.2	0.4	31.0
11							0.4	2.0	6.4	10.8	10.8		30.4
12								2.8	8.0	12.0	7.6		30.4
13							0.4	4.2	9.0	14.4	2.2		30.2
14							0.8	6.6	13.0	10.6			31.0
15							1.0	8.6	16.0	5.4			31.0
16							1.6	9.2	17.4	2.6			30.8
17						0.2	1.6	11.6	15.8	1.4			30.6
18						0.2	2.0	15.8	12.6	0.2			30.8
19						0.2	2.4	17.6	10.6				30.8
20						0.2	2.8	19.0	9.0				31.0
21						0.2	3.6	20.8	6.2				30.8
22						0.2	5.2	21.6	4.0				31.0
23						0.2	5.8	22.0	2.2				30.2
<b>Total</b>						1.4	44.6	242.4	222.2	148.0	76.8	1.6	737.0

**MONTH : JUNE**

**MODEL : E**

TABLE: Mean number of occurrence of screen temperature (in ranges of 5 degrees) at specified time.

Time UTC	TEMPERATURE (°C)												Total
	-10 to - 5	-5 to 0	0 to 5	5 to 10	10 to 15	15 to 20	20 to 25	25 to 30	30 to 35	35 to 40	40 to 45	45 to 50	
0							1.0	25.2	3.8				30.0
1							0.2	19.8	9.2				29.2
2								12.8	15.4	1.2			29.4
3								8.8	16.0	4.8			29.6
4								5.8	15.0	8.6			29.4
5								4.6	12.4	12.0	0.8		29.8
6								2.8	10.0	13.6	3.4		29.8
7								2.8	8.4	13.4	4.8		29.4
8								4.2	7.2	12.2	6.2		29.8
9								4.0	7.4	12.0	5.8	0.4	29.6
10								5.2	7.4	11.2	5.4	0.6	29.8
11							0.2	5.8	7.8	10.4	5.2	0.2	29.6
12							0.2	6.2	9.8	9.4	3.8	0.2	29.6
13							0.2	7.0	11.6	9.2	1.6		29.6
14							0.2	9.4	13.4	5.8	0.6		29.4
15							0.2	11.2	13.8	4.0			29.2
16							0.2	13.2	13.6	3.0			30.0
17							0.2	14.2	13.8	1.6			29.8
18							0.4	15.6	13.2	0.6			29.8
19							0.4	16.4	12.4	0.6			29.8
20							0.4	18.4	10.2	0.4			29.4
21							0.4	20.6	8.6				29.6
22							0.4	21.0	7.8	0.2			29.4
23							0.6	23.8	5.2				29.6
<b>Total</b>							5.2	278.8	253.4	134.2	37.6	1.4	710.6

**MONTH : JULY**

**MODEL : E**

TABLE: Mean number of occurrence of screen temperature (in ranges of 5 degrees) at specified time.

Time UTC	TEMPERATURE (°C)												Total
	-10 to - 5	-5 to 0	0 to 5	5 to 10	10 to 15	15 to 20	20 to 25	25 to 30	30 to 35	35 to 40	40 to 45	45 to 50	
0						0.2	30.6	0.2					31.0
1							29.8	1.0					30.8
2						0.4	23.2	7.4					31.0
3						0.2	16.4	14.2					30.8
4						0.2	11.2	19.6					31.0
5							9.2	21.0	0.6				30.8
6							9.0	20.2	1.8				31.0
7							8.6	17.4	4.8				30.8
8							9.4	16.2	5.2				30.8
9						0.2	8.4	16.0	6.4				31.0
10							9.8	14.8	6.2				30.8
11						0.2	11.2	15.6	4.0				31.0
12							13.4	14.6	2.6				30.6
13							16.6	13.2	1.0				30.8
14							19.2	11.4	0.4				31.0
15							21.0	9.4	0.2				30.6
16							23.2	7.8					31.0
17							24.2	6.6					30.8
18							25.6	5.2					30.8
19							27.8	3.2					31.0
20						0.2	28.6	2.0					30.8
21						0.2	29.8	1.0					31.0
22						0.2	30.2	0.4					30.8
23						0.4	30.4	0.2					31.0
<b>Total</b>						2.4	466.8	238.6	33.2				741.0



**MONTH : AUGUST**

**MODEL : E**

TABLE: Mean number of occurrence of screen temperature (in ranges of 5 degrees) at specified time.

Time UTC	TEMPERATURE (°C)												Total
	-10 to - 5	-5 to 0	0 to 5	5 to 10	10 to 15	15 to 20	20 to 25	25 to 30	30 to 35	35 to 40	40 to 45	45 to 50	
0								30.6					30.6
1								30.6					30.6
2								29.0	1.8				30.8
3								21.0	9.8				30.8
4								13.6	17.0				30.6
5							0.2	8.2	22.6				31.0
6								5.0	26.0				31.0
7								5.2	25.8				31.0
8								6.2	24.0	0.6			30.8
9							0.2	6.0	23.0	1.4			30.6
10							0.2	6.4	22.4	1.4			30.4
11								7.4	23.0	0.6			31.0
12								10.2	20.6	0.2			31.0
13								14.0	17.0				31.0
14								20.0	10.6				30.6
15								23.4	7.4				30.8
16								24.6	6.2				30.8
17								28.6	2.2				30.8
18								30.2	0.4				30.6
19								30.8	0.2				31.0
20								30.8					30.8
21								31.0					31.0
22							0.2	30.8					31.0
23								31.0					31.0
<b>Total</b>							0.8	474.6	260.0	4.2			739.6

**MONTH : SEPTEMBER**

**MODEL : E**

TABLE: Mean number of occurrence of screen temperature (in ranges of 5 degrees) at specified time.

Time UTC	TEMPERATURE (°C)												Total
	-10 to - 5	-5 to 0	0 to 5	5 to 10	10 to 15	15 to 20	20 to 25	25 to 30	30 to 35	35 to 40	40 to 45	45 to 50	
0							1.8	27.8					29.6
1							1.4	28.6					30.0
2							1.2	28.4	0.2				29.8
3							1.0	20.0	8.8				29.8
4							1.0	10.8	18.0				29.8
5							1.0	6.8	22.2				30.0
6							0.8	3.2	25.4	0.2			29.6
7							0.6	3.4	26.0				30.0
8							0.8	3.0	25.0	0.6			29.4
9							0.2	5.4	22.6	1.8			30.0
10							0.2	6.8	22.2	0.6			29.8
11							0.6	8.4	20.4	0.2			29.6
12							1.0	11.0	17.6				29.6
13							1.2	14.4	14.0				29.6
14							1.2	21.2	7.2				29.6
15							1.2	25.2	3.2				29.6
16							1.2	27.0	1.8				30.0
17							1.4	28.0	0.6				30.0
18							1.4	28.2	0.4				30.0
19							1.2	28.4					29.6
20							1.4	28.2		0.2			29.8
21							1.6	28.4					30.0
22							1.8	27.8					29.6
23							2.0	27.8					29.8
<b>Total</b>							27.2	448.2	235.6	3.6			714.6

**MONTH : OCTOBER**

**MODEL : E**

TABLE: Mean number of occurrence of screen temperature (in ranges of 5 degrees) at specified time.

Time UTC	TEMPERATURE (°C)												Total
	-10 to - 5	-5 to 0	0 to 5	5 to 10	10 to 15	15 to 20	20 to 25	25 to 30	30 to 35	35 to 40	40 to 45	45 to 50	
0					0.2	6.2	11.2	6.6					24.2
1					0.2	5.4	12.2	6.8					24.6
2						2.6	11.0	10.2					23.8
3							8.8	15.2	0.4				24.4
4							3.2	17.8	3.8				24.8
5							1.0	15.4	8.4				24.8
6							0.4	9.4	14.8				24.6
7							0.4	6.4	17.4				24.2
8							0.4	5.8	18.4				24.6
9							0.6	5.0	18.6				24.2
10							0.6	6.0	18.2				24.8
11							0.6	9.6	14.2				24.4
12							1.4	15.8	7.6				24.8
13							4.0	15.6	4.2				23.8
14							9.2	14.8	0.8				24.8
15						0.6	10.8	13.2					24.6
16						1.4	10.6	12.6					24.6
17						2.2	10.8	11.6					24.6
18						3.0	10.6	10.6					24.2
19						3.2	11.8	9.6					24.6
20						3.8	12.0	8.6					24.4
21						4.4	12.6	7.6					24.6
22						4.8	13.0	6.6					24.4
23						5.6	12.4	6.2					24.2
<b>Total</b>					0.4	43.2	169.6	247.0	126.8				587.0

**MONTH : NOVEMBER**

**MODEL : E**

TABLE: Mean number of occurrence of screen temperature (in ranges of 5 degrees) at specified time.

Time UTC	TEMPERATURE (°C)												Total
	-10 to - 5	-5 to 0	0 to 5	5 to 10	10 to 15	15 to 20	20 to 25	25 to 30	30 to 35	35 to 40	40 to 45	45 to 50	
0				0.8	11.8	9.8	1.4						23.8
1				0.6	11.8	10.2	1.2						23.8
2					6.2	13.6	3.8						23.6
3					0.2	14.2	8.8	0.8					24.0
4						3.0	17.6	3.4					24.0
5						0.2	11.8	11.8	0.2				24.0
6						0.2	4.2	18.2	1.0				23.6
7							1.8	19.4	2.2				23.4
8							1.2	19.6	2.8				23.6
9							0.6	20.0	3.4				24.0
10							0.8	20.8	2.0				23.6
11							3.6	19.4	0.6				23.6
12						0.4	15.6	7.6					23.6
13						3.2	17.0	2.6					22.8
14					0.2	11.0	12.0	0.6					23.8
15					0.8	16.2	7.0						24.0
16					2.0	16.6	5.4						24.0
17					3.0	16.0	5.0						24.0
18					4.4	15.2	4.4						24.0
19					5.6	14.6	3.6						23.8
20					6.6	14.0	2.8						23.4
21					7.4	13.4	3.0						23.8
22				0.2	8.2	13.2	2.4						24.0
23				0.4	10.8	11.0	1.4						23.6
<b>Total</b>				2.0	79.0	196.0	136.4	144.2	12.2				569.8

**MONTH : DECEMBER**

**MODEL : E**

TABLE: Mean number of occurrence of screen temperature (in ranges of 5 degrees) at specified time.

Time UTC	TEMPERATURE (°C)												Total
	-10 to - 5	-5 to 0	0 to 5	5 to 10	10 to 15	15 to 20	20 to 25	25 to 30	30 to 35	35 to 40	40 to 45	45 to 50	
0			1.2	12.2	14.2	3.4							31.0
1			2.0	11.4	13.2	3.4							30.0
2			0.4	10.2	15.6	4.4							30.6
3				2.4	15.4	12.8	0.4						31.0
4				0.8	4.8	19.6	5.0						30.2
5				0.8	1.6	13.6	15.0						31.0
6				0.8	1.2	6.6	19.4	2.6	0.2				30.8
7				0.4	1.2	3.8	20.0	5.4					30.8
8				0.2	1.0	3.8	17.6	8.0					30.6
9				0.2	0.4	3.4	15.8	11.0					30.8
10					0.6	3.8	17.0	9.2					30.6
11					1.0	5.2	20.2	4.6					31.0
12					1.4	12.0	17.2						30.6
13				0.4	2.8	20.8	7.0						31.0
14				0.6	9.6	18.6	1.8						30.6
15				1.8	14.8	13.4	0.8						30.8
16				2.4	16.8	11.2	0.6						31.0
17				3.4	17.0	10.6							31.0
18				5.8	16.4	8.8							31.0
19				6.2	17.4	7.4							31.0
20				7.4	16.8	6.4							30.6
21				9.2	16.2	5.6							31.0
22				10.2	16.0	4.2							30.4
23			0.4	11.8	14.4	3.4							30.0
<b>Total</b>			4.0	98.6	229.8	206.2	157.8	40.8	0.2				737.4

**Month : January**

**TABLE : VI**

TABLE: Mean daily atmospheric pressure (hPa) at mean sea level (msl) at standard times of synoptic observation (UTC).

<b>DATE</b>	<b>0000</b>	<b>0300</b>	<b>0600</b>	<b>1200</b>	<b>1800</b>
1	1004.2	1006.6	1006.7	1003.3	1004.6
2	1004.2	1005.9	1006.1	1002.9	1004.6
3	1003.4	1005.4	1005.0	1001.9	1003.9
4	1003.3	1005.5	1005.3	1002.6	1003.9
5	1002.9	1005.1	1004.7	1001.5	1003.3
6	1002.5	1004.2	1003.9	1000.9	1002.2
7	1001.0	1003.3	1002.0	0999.6	1001.5
8	1000.9	1003.2	1002.8	1000.1	1001.7
9	1001.4	1003.4	1003.3	1000.8	1002.8
10	1002.1	1004.1	1004.1	1001.4	1003.3
11	1003.0	1005.3	1005.3	1001.9	1003.8
12	1003.0	1005.0	1004.7	1001.3	1003.1
13	1002.2	1004.3	1004.2	1000.7	1002.7
14	1002.2	1004.4	1004.3	1001.5	1003.6
15	1002.8	1004.9	1004.8	1001.7	1003.0
16	1002.0	1004.1	1003.8	1000.3	1002.0
17	1001.2	1003.9	1004.3	1001.3	1003.4
18	1002.7	1005.3	1005.4	1002.0	1003.9
19	1002.6	1004.9	1005.0	1001.8	1003.5
20	1002.7	1004.7	1004.7	1001.6	1003.3
21	1002.6	1004.9	1005.2	1001.9	1003.5
22	1003.0	1005.2	1005.0	1001.2	1002.8
23	1002.1	1003.9	1003.7	1000.4	1002.3
24	1001.8	1003.8	1004.0	1000.6	1003.2
25	1002.5	1004.8	1004.7	1001.9	1003.9
26	1002.9	1004.8	1005.1	1001.5	1003.0
27	1002.1	1004.3	1004.6	1001.4	1003.4
28	1002.6	1005.0	1005.3	1001.4	1003.3
29	1002.3	1004.9	1005.3	1002.0	1003.7
30	1002.6	1005.0	1005.0	1001.1	1002.8
31	1001.8	1004.0	1004.5	1001.5	1003.6
<b>MEAN</b>	<b>1002.5</b>	<b>1004.6</b>	<b>1004.6</b>	<b>1001.4</b>	<b>1003.2</b>

**Month : February**

**TABLE : VI**

TABLE: Mean daily atmospheric pressure (hPa) at mean sea level (msl) at standard times of synoptic observation (UTC).

<b>DATE</b>	<b>0000</b>	<b>0300</b>	<b>0600</b>	<b>1200</b>	<b>1800</b>
1	1002.8	1005.1	1005.3	1002.1	1004.1
2	1003.0	1005.4	1005.3	1002.3	1004.1
3	1003.6	1005.8	1005.7	1002.3	1004.0
4	1003.2	1005.2	1004.8	1001.5	1003.4
5	1002.7	1004.7	1004.7	1000.9	1002.5
6	1001.6	1003.4	1003.5	1000.1	1001.7
7	1000.7	1003.1	1003.4	1000.7	1002.9
8	1002.3	1004.7	1004.6	1000.9	1002.5
9	1001.6	1004.2	1004.3	1001.4	1003.1
10	1002.6	1004.9	1005.0	1001.9	1004.0
11	1003.6	1006.1	1005.7	1002.4	1005.2
12	1004.5	1007.0	1007.0	1003.6	1005.2
13	1004.5	1006.6	1006.4	1002.3	1003.8
14	1002.8	1004.9	1004.6	1001.2	1003.5
15	1002.9	1004.9	1004.7	1001.7	1003.8
16	1002.5	1004.6	1004.3	1000.4	1002.3
17	1001.2	1003.2	1003.0	0999.3	1001.5
18	1000.3	1002.6	1002.6	0999.3	1001.7
19	1000.9	1003.3	1003.1	0999.6	1001.8
20	1001.0	1002.8	1002.8	1001.4	1001.2
21	1000.2	1002.4	1002.3	0998.8	1000.9
22	1000.0	1002.4	1002.1	0998.4	1000.6
23	0999.3	1001.6	1001.5	0998.0	1000.6
24	0999.2	1001.4	1001.2	0997.6	0999.8
25	0998.4	1000.6	1000.6	0996.5	0998.5
26	0997.3	0999.8	0999.6	0996.4	0998.6
27	0997.5	0999.9	1000.0	0997.3	0999.4
28	0999.0	1001.3	1001.5	0997.4	0999.8
29	0999.0	1001.2	1001.1	0999.3	1000.5
<b>MEAN</b>	<b>1001.3</b>	<b>1003.6</b>	<b>1003.5</b>	<b>1000.2</b>	<b>1002.1</b>

**Month : March**

**TABLE : VI**

TABLE: Mean daily atmospheric pressure (hPa) at mean sea level (msl) at standard times of synoptic observation (UTC).

<b>DATE</b>	<b>0000</b>	<b>0300</b>	<b>0600</b>	<b>1200</b>	<b>1800</b>
1	0999.3	1001.6	1001.7	0998.3	0999.7
2	0999.1	1001.2	1000.7	0996.3	0998.2
3	0997.3	0999.3	0998.7	0995.2	0997.6
4	0996.0	0998.0	0998.2	0994.6	0996.7
5	0996.1	0998.6	0998.5	0994.9	0997.3
6	0997.0	0999.8	0999.7	0996.3	0998.8
7	0997.9	1000.5	1000.5	0997.3	0999.8
8	0999.0	1001.0	1000.8	0997.2	0999.0
9	0997.6	0999.9	1000.0	0996.2	0998.2
10	0997.1	0999.8	0999.6	0995.7	0998.2
11	0997.8	1000.6	1000.8	0997.2	0999.5
12	0998.8	1001.3	1001.1	0998.0	1000.2
13	0999.8	1002.7	1002.7	0999.2	1001.0
14	0999.6	1001.9	1002.1	0997.8	0999.9
15	0998.7	1001.5	1001.4	0997.6	0999.3
16	0998.7	1001.0	1000.9	0997.2	0999.0
17	0998.2	0999.6	1000.3	0997.0	0998.6
18	0998.3	1000.8	1000.7	0996.9	0998.9
19	0998.0	1000.5	1000.1	0996.6	0998.5
20	0997.2	0999.5	0999.1	0995.0	0997.0
21	0996.7	0999.1	0999.0	0995.8	0997.8
22	0996.9	0999.2	0998.9	0995.0	0997.4
23	0996.9	0999.4	0998.7	0995.2	0998.1
24	0997.5	0999.9	0999.4	0995.3	0997.5
25	0997.2	0999.4	0999.1	0995.2	0998.0
26	0997.4	1000.2	0999.7	0995.7	0998.3
27	0997.3	0999.7	0999.1	0995.3	0998.1
28	0996.7	0998.7	0998.1	0993.8	0995.9
29	0994.7	0996.6	0996.1	0991.7	0994.2
30	0993.3	0995.0	0994.1	0990.1	0994.5
31	0992.9	0995.4	0994.9	0991.1	0993.6
<b>MEAN</b>	<b>0997.4</b>	<b>0999.7</b>	<b>0999.5</b>	<b>0995.8</b>	<b>0998.0</b>



Month : April

TABLE : VI

TABLE: Mean daily atmospheric pressure (hPa) at mean sea level (msl) at standard times of synoptic observation (UTC).

<i>DATE</i>	<i>0000</i>	<i>0300</i>	<i>0600</i>	<i>1200</i>	<i>1800</i>
1	0993.4	0995.5	0995.5	0991.3	0994.5
2	0994.1	0995.8	0995.6	0991.8	0994.4
3	0994.7	0997.0	0996.6	0992.8	0995.5
4	0995.4	0997.5	0996.6	0992.3	0995.3
5	0995.1	0997.2	0996.5	0992.6	0995.4
6	0994.7	0996.8	0995.8	0992.3	0994.9
7	0994.6	0996.7	0996.1	0991.7	0994.2
8	0994.5	0996.8	0996.1	0992.2	0995.6
9	0995.2	0997.5	0997.0	0992.6	0995.7
10	0995.8	0997.8	0997.4	0993.5	0996.5
11	0995.9	0997.9	0997.3	0993.4	0995.7
12	0995.2	0997.6	0997.0	0992.3	0996.2
13	0994.8	0996.9	0996.2	0991.9	0994.9
14	0994.3	0996.1	0995.3	0991.0	0994.1
15	0993.5	0995.7	0994.7	0990.5	0993.6
16	0993.2	0995.4	0994.8	0990.9	0994.6
17	0994.3	0996.9	0996.1	0992.1	0995.3
18	0994.9	0997.1	0996.4	0991.4	0993.8
19	0993.1	0994.7	0993.9	0989.7	0992.3
20	0991.8	0994.0	0994.3	0989.5	0992.6
21	0991.4	0993.9	0994.1	0990.0	0993.5
22	0992.7	0995.6	0995.3	0991.5	0994.7
23	0994.5	0995.9	0995.0	0990.7	0994.8
24	0993.9	0995.4	0994.4	0989.9	0993.0
25	0992.5	0994.5	0994.0	0990.0	0992.7
26	0992.6	0994.7	0994.5	0992.9	0993.9
27	0994.2	0995.6	0995.3	0991.5	0994.7
28	0994.0	0995.6	0994.8	0990.8	0993.5
29	0993.1	0994.9	0993.9	0989.4	0992.8
30	0994.3	0994.6	0994.0	0965.0	0993.2
<b>MEAN</b>	<b>0994.1</b>	<b>0996.1</b>	<b>0995.5</b>	<b>0990.6</b>	<b>0994.4</b>

**Month : May**

**TABLE : VI**

TABLE: Mean daily atmospheric pressure (hPa) at mean sea level (msl) at standard times of synoptic observation (UTC).

<b>DATE</b>	<b>0000</b>	<b>0300</b>	<b>0600</b>	<b>1200</b>	<b>1800</b>
1	0993.2	0994.3	0994.2	0991.4	0993.8
2	0993.6	0995.6	0995.1	0991.2	0994.0
3	0993.8	0995.6	0994.9	0991.7	0994.3
4	0993.8	0995.9	0995.4	0991.8	0994.2
5	0993.4	0995.6	0994.3	0990.9	0994.1
6	0993.7	0995.2	0994.5	0990.5	0993.3
7	0992.8	0994.9	0994.2	0990.1	0991.8
8	0992.3	0976.0	0993.0	0988.8	0991.7
9	0991.6	0994.2	0993.5	0989.9	0992.7
10	0992.6	0995.1	0994.0	0990.2	0992.8
11	0992.3	0994.8	0994.4	0990.3	0993.1
12	0992.7	0994.3	0993.5	0989.7	0992.1
13	0992.1	0993.7	0993.4	0988.7	0992.1
14	0991.7	0993.2	0992.4	0988.7	0990.8
15	0990.5	0992.2	0991.5	0987.4	0990.1
16	0990.1	0991.9	0991.5	0987.7	0990.3
17	0990.5	0992.0	0991.3	0987.8	0991.1
18	0990.4	0992.0	0991.3	0988.0	0990.8
19	0990.3	0992.1	0991.6	0988.0	0991.2
20	0989.9	0991.5	0991.1	0987.7	0990.2
21	0989.4	0991.4	0991.0	0987.4	0990.3
22	0989.3	0991.1	0990.7	0986.9	0990.0
23	0989.7	0991.3	0990.8	0987.5	0989.9
24	0991.5	0990.7	0990.2	0986.4	0988.5
25	0987.3	0989.4	0988.9	0985.2	0988.1
26	0987.9	0989.2	0988.5	0985.1	0987.9
27	0987.3	0988.5	0988.1	0985.9	0987.4
28	0987.7	0989.4	0989.0	0985.7	0989.2
29	0988.4	0990.1	0989.5	0986.0	0988.8
30	0987.9	0989.4	0989.0	0985.9	0989.3
31	0988.9	0990.3	0990.0	0986.7	0990.8
<b>MEAN</b>	<b>0990.9</b>	<b>0992.0</b>	<b>0992.0</b>	<b>0988.4</b>	<b>0991.1</b>

Month : June

TABLE : VI

TABLE: Mean daily atmospheric pressure (hPa) at mean sea level (msl) at standard times of synoptic observation (UTC).

<i>DATE</i>	<i>0000</i>	<i>0300</i>	<i>0600</i>	<i>1200</i>	<i>1800</i>
1	0990.3	0991.1	0991.1	0988.1	0990.6
2	0990.3	0992.3	0991.6	0988.0	0990.6
3	0990.3	0991.6	0990.2	0987.1	0989.3
4	0989.1	0990.4	0990.0	0986.4	0989.0
5	0988.3	0990.0	0989.5	0986.5	0989.7
6	0989.9	0991.6	0991.2	0987.8	0990.2
7	0989.8	0990.6	0989.7	0986.4	0988.8
8	0987.9	0989.3	0988.7	0985.3	0987.6
9	0987.2	0988.4	0987.6	0983.6	0986.7
10	0985.7	0987.2	0986.0	0984.5	0985.5
11	0984.6	0985.6	0985.4	0982.2	0985.3
12	0984.5	0985.7	0984.9	0982.0	0984.9
13	0984.6	0985.8	0985.5	0972.2	0985.5
14	0985.1	0986.0	0985.5	0982.8	0985.4
15	0984.6	0985.9	0985.4	0982.7	0985.4
16	0985.0	0986.2	0985.9	0983.5	0986.4
17	0985.3	0986.3	0985.9	0983.4	0986.2
18	0988.0	0986.6	0986.5	0983.6	0986.4
19	0985.6	0987.1	0987.0	0984.2	0987.2
20	0986.2	0987.9	0987.8	0985.2	0987.9
21	0987.1	0990.2	0987.9	0984.8	0987.6
22	0986.6	0988.0	0987.9	0985.0	0987.8
23	0987.5	0989.2	0989.1	0985.7	0988.7
24	0988.1	0989.0	0988.8	0985.4	0987.8
25	0986.9	0987.9	0987.3	0985.2	0987.6
26	0987.0	0990.3	0988.3	0985.4	0988.4
27	0987.3	0988.8	0988.4	0986.1	0988.0
28	0987.5	0988.8	0988.7	0985.0	0988.4
29	0987.8	0988.5	0988.0	0985.0	0987.4
30	0986.5	0987.4	0987.0	0984.3	0986.8
<b>MEAN</b>	<b>0987.2</b>	<b>0988.5</b>	<b>0987.9</b>	<b>0984.6</b>	<b>0987.6</b>

Month : July

TABLE : VI

TABLE: Mean daily atmospheric pressure (hPa) at mean sea level (msl) at standard times of synoptic observation (UTC).

<i>DATE</i>	<i>0000</i>	<i>0300</i>	<i>0600</i>	<i>1200</i>	<i>1800</i>
1	0985.6	0987.1	0986.8	0984.2	0986.7
2	0985.5	0986.6	0986.9	0984.2	0986.9
3	0985.9	0987.1	0987.1	0983.9	0987.2
4	0985.9	0986.9	0986.9	0985.3	0986.6
5	0985.9	0987.3	0986.7	0983.5	0986.0
6	0985.0	0986.2	0985.7	0983.2	0986.0
7	0985.0	0986.3	0986.5	0984.3	0987.2
8	0986.4	0987.5	0987.3	0984.4	0987.1
9	0985.8	0987.0	0987.1	0984.8	0987.1
10	0986.0	0987.1	0987.1	0984.9	0987.3
11	0986.3	0988.0	0988.0	0985.5	0988.0
12	0987.1	0988.8	0988.9	0985.6	0988.3
13	0987.4	0988.4	0988.2	0987.0	0987.9
14	0987.1	0988.2	0988.0	0984.9	0989.8
15	0987.2	0988.2	0988.0	0984.9	0987.9
16	0987.5	0988.6	0988.3	0984.9	0987.9
17	0987.1	0988.4	0988.1	0985.2	0988.3
18	0987.4	0988.3	0988.1	0985.1	0988.1
19	0987.0	0987.8	0987.4	0984.4	0987.0
20	0985.8	0987.3	0987.3	0983.9	0986.9
21	0986.1	0988.1	0987.8	0984.9	0987.5
22	0986.2	0987.5	0987.4	0984.1	0986.5
23	0985.6	0986.6	0986.6	0984.1	0986.8
24	0985.8	0987.2	0987.7	0985.5	0988.5
25	0987.4	0988.7	0988.3	0985.6	0987.6
26	0986.4	0987.4	0987.5	0985.3	0987.7
27	0986.6	0987.8	0987.9	0985.1	0988.1
28	0987.0	0988.2	0988.5	0986.1	0988.3
29	0986.9	0988.4	0988.2	0986.0	0988.5
30	0987.2	0989.6	0988.8	0985.6	0987.7
31	0986.1	0987.9	0987.8	0985.4	0988.2
<b>MEAN</b>	<b>0986.4</b>	<b>0987.7</b>	<b>0987.6</b>	<b>0984.9</b>	<b>0987.5</b>

Month : August

TABLE : VI

TABLE: Mean daily atmospheric pressure (hPa) at mean sea level (msl) at standard times of synoptic observation (UTC).

<i>DATE</i>	<i>0000</i>	<i>0300</i>	<i>0600</i>	<i>1200</i>	<i>1800</i>
1	0987.0	0988.3	0990.5	0985.2	0988.0
2	0986.8	0988.1	0987.5	0984.8	0987.8
3	0986.7	0989.4	0987.2	0983.6	0987.7
4	0985.6	0986.9	0986.8	0983.2	0985.7
5	0984.7	0986.0	0986.2	0983.0	0985.8
6	0984.8	0986.7	0986.7	0983.9	0987.3
7	0986.1	0981.4	0987.2	0984.5	0986.9
8	0986.3	0987.4	0987.3	0985.1	0988.2
9	0987.7	0989.5	0989.3	0986.1	0988.7
10	0987.3	0988.6	0988.4	0985.2	0987.9
11	0986.8	0987.9	0987.6	0985.2	0987.9
12	0986.5	0988.2	0988.2	0985.3	0988.2
13	0987.0	0988.8	0988.7	0985.7	0988.3
14	0987.1	0988.6	0988.7	0985.4	0988.5
15	0987.5	0989.2	0988.9	0985.8	0989.0
16	0988.1	0988.7	0989.1	0986.1	0989.0
17	0987.9	0989.1	0988.8	0985.6	0988.3
18	0987.5	0988.7	0988.7	0985.2	0988.3
19	0987.3	0989.1	0988.7	0986.0	0989.2
20	0988.4	0989.8	0989.9	0986.5	0989.6
21	0989.0	0990.6	0990.4	0987.2	0990.2
22	0989.5	0990.9	0990.6	0987.4	0990.1
23	0989.5	0990.9	0990.7	0987.7	0990.2
24	0989.4	0990.9	0990.5	0987.3	0990.0
25	0988.8	0989.9	0989.4	0986.2	0989.0
26	0987.2	0988.8	0988.5	0985.7	0988.4
27	0987.2	0989.0	0989.0	0986.1	0989.1
28	0988.2	0989.3	0989.3	0986.5	0990.0
29	0989.0	0990.8	0990.8	0987.6	0990.6
30	0990.2	0991.5	0991.1	0988.0	0991.0
31	0990.6	0991.9	0991.8	0988.5	0991.8
<b>MEAN</b>	<b>0987.6</b>	<b>0988.9</b>	<b>0988.9</b>	<b>0985.8</b>	<b>0988.7</b>

**Month : September**

**TABLE : VI**

TABLE: Mean daily atmospheric pressure (hPa) at mean sea level (msl) at standard times of synoptic observation (UTC).

<i>DATE</i>	<i>0000</i>	<i>0300</i>	<i>0600</i>	<i>1200</i>	<i>1800</i>
1	0991.0	0992.7	0992.7	0988.9	0991.6
2	0990.8	0992.4	0992.0	0988.8	0991.5
3	0989.3	0992.3	0992.1	0988.8	0991.9
4	0991.0	0992.6	0991.9	0988.2	0991.0
5	0990.1	0991.7	0991.2	0987.5	0990.1
6	0989.6	0991.3	0990.7	0987.3	0990.5
7	0989.7	0991.3	0991.4	0988.7	0991.8
8	0991.2	0992.8	0992.6	0989.4	0992.0
9	0991.1	0992.6	0992.2	0988.8	0991.4
10	0991.0	0992.6	0992.3	0989.3	0992.2
11	0991.8	0993.1	0992.7	0989.7	0992.4
12	0991.6	0993.0	0992.4	0989.1	0991.5
13	0991.0	0992.8	0992.5	0991.7	0992.0
14	0991.1	0993.1	0993.0	0990.7	0992.6
15	0991.9	0993.6	0993.6	0990.4	0992.6
16	0991.6	0992.9	0992.6	0989.2	0991.4
17	0990.6	0992.1	0992.0	0989.3	0992.1
18	0991.5	0993.4	0993.2	0990.6	0993.0
19	0991.2	0994.0	0993.3	0990.0	0992.2
20	0991.4	0993.0	0992.4	0989.5	0991.7
21	0990.9	0992.9	0992.4	0989.6	0992.6
22	0992.2	0994.1	0993.8	0991.3	0993.9
23	0993.5	0995.5	0995.3	0992.1	0995.0
24	0994.5	0995.8	0995.3	0992.1	0993.8
25	0992.8	0994.5	0994.3	0991.5	0994.0
26	0993.4	0995.2	0995.3	0992.3	0994.9
27	0994.2	0996.3	0996.0	0992.8	0995.0
28	0994.4	0996.1	0995.5	0992.5	0995.0
29	0994.4	0996.1	0995.7	0992.8	0994.6
30	0993.9	0995.4	0994.7	0992.8	0994.6
<b>MEAN</b>	<b>0991.8</b>	<b>0993.5</b>	<b>0993.2</b>	<b>0990.2</b>	<b>0992.6</b>

**Month : October**

**TABLE : VI**

TABLE: Mean daily atmospheric pressure (hPa) at mean sea level (msl) at standard times of synoptic observation (UTC).

<b>DATE</b>	<b>0000</b>	<b>0300</b>	<b>0600</b>	<b>1200</b>	<b>1800</b>
1	0993.1	0995.8	0995.5	0992.8	0994.7
2	0994.1	0996.0	0995.6	0992.5	0993.8
3	0993.8	0995.9	0995.6	0993.0	0995.4
4	0994.9	0996.6	0996.0	0992.9	0995.6
5	0995.3	0997.4	0997.0	0993.9	0996.0
6	0996.0	0997.8	0997.2	0993.8	0996.0
7	0996.0	0997.1	0997.2	0994.0	0995.9
8	0995.7	0997.4	0996.8	0993.8	0996.3
9	0995.8	0997.6	0996.8	0993.8	0995.6
10	0995.7	0997.5	0996.7	0993.6	0995.5
11	0995.2	0997.0	0996.1	0993.3	0995.4
12	0995.2	0997.7	0995.2	0993.7	0995.7
13	0995.4	0997.7	0997.0	0994.0	0996.0
14	0995.8	0997.9	0997.1	0994.4	0996.1
15	0996.1	0998.8	0997.2	0994.4	0996.4
16	0996.3	0998.3	0997.5	0994.6	0997.0
17	0996.8	0998.8	0997.7	0994.2	0996.5
18	0996.1	0998.2	0997.3	0994.6	0996.4
19	0996.0	0998.6	0998.0	0995.6	0997.6
20	0997.7	0999.9	0999.3	0996.8	0998.6
21	0998.2	1000.0	0999.1	0995.8	0997.0
22	0996.4	0998.2	0997.8	0995.4	0997.1
23	0996.7	0999.0	0998.4	0996.2	0998.2
24	0997.6	0999.9	0999.4	0997.2	0999.3
25	0998.9	1000.8	1000.2	0998.1	0999.9
26	0999.6	1001.8	1001.1	0998.6	1000.6
27	1000.3	1002.2	1001.6	0998.8	1000.8
28	1000.6	1002.8	1002.1	0999.4	1001.2
29	1001.2	1003.2	1002.2	0999.5	1000.4
30	0999.7	1002.6	1001.3	0998.6	1000.8
31	1000.1	1001.8	1000.8	0998.3	1000.4
<b>MEAN</b>	<b>0996.8</b>	<b>0998.8</b>	<b>0998.1</b>	<b>0995.3</b>	<b>0997.3</b>

**Month : November**

**TABLE : VI**

TABLE: Mean daily atmospheric pressure (hPa) at mean sea level (msl) at standard times of synoptic observation (UTC).

<i><b>DATE</b></i>	<i><b>0000</b></i>	<i><b>0300</b></i>	<i><b>0600</b></i>	<i><b>1200</b></i>	<i><b>1800</b></i>
1	1000.0	1002.2	1001.8	0998.5	1000.6
2	1000.5	1002.7	1001.9	0998.8	1001.2
3	1000.2	1002.4	1001.6	0998.8	1000.5
4	1000.2	1001.9	1000.9	0998.3	0999.8
5	0999.2	1001.4	1000.9	0998.2	0999.8
6	0999.8	1001.8	1001.0	0999.0	1000.3
7	1000.3	1002.5	1001.6	0999.5	1001.4
8	1001.0	1003.2	1002.2	0999.6	1001.2
9	1000.4	1002.4	1001.3	0998.7	1000.8
10	1000.2	1002.4	1001.4	0998.5	1000.8
11	1000.6	1002.6	1002.0	0999.3	1001.4
12	1001.0	1003.4	1002.5	0999.6	1001.6
13	1001.1	1002.8	1002.0	0999.0	1000.8
14	1000.4	1002.5	1001.8	0998.7	1001.0
15	1000.0	1002.4	1001.7	0998.7	1000.4
16	0999.9	1002.2	1001.2	0999.0	1000.9
17	1000.8	1002.8	1001.9	0998.4	1000.1
18	1000.2	1002.9	1002.0	0999.0	1000.8
19	1000.2	1002.6	1001.5	0998.8	1000.5
20	0999.9	1002.3	1001.5	0999.0	1001.5
21	1001.2	1003.7	1002.7	0999.8	1002.2
22	1002.0	1004.1	1003.2	1000.3	1002.6
23	1002.4	1004.6	1003.6	1000.6	1002.5
24	1002.2	1004.3	1003.4	1000.6	1002.9
25	1002.2	1004.3	1003.6	1000.8	1002.7
26	1002.3	1004.5	1003.7	1000.9	1002.9
27	1002.8	1005.3	1004.8	1002.6	1004.5
28	1003.7	1006.1	1005.3	1002.0	1003.8
29	1003.6	1005.7	1005.0	1001.7	1003.5
30	1003.2	1005.6	1004.8	1001.6	1003.4
<b>MEAN</b>	<b>1001.1</b>	<b>1003.3</b>	<b>1002.4</b>	<b>0999.6</b>	<b>1001.5</b>



**Month : December**

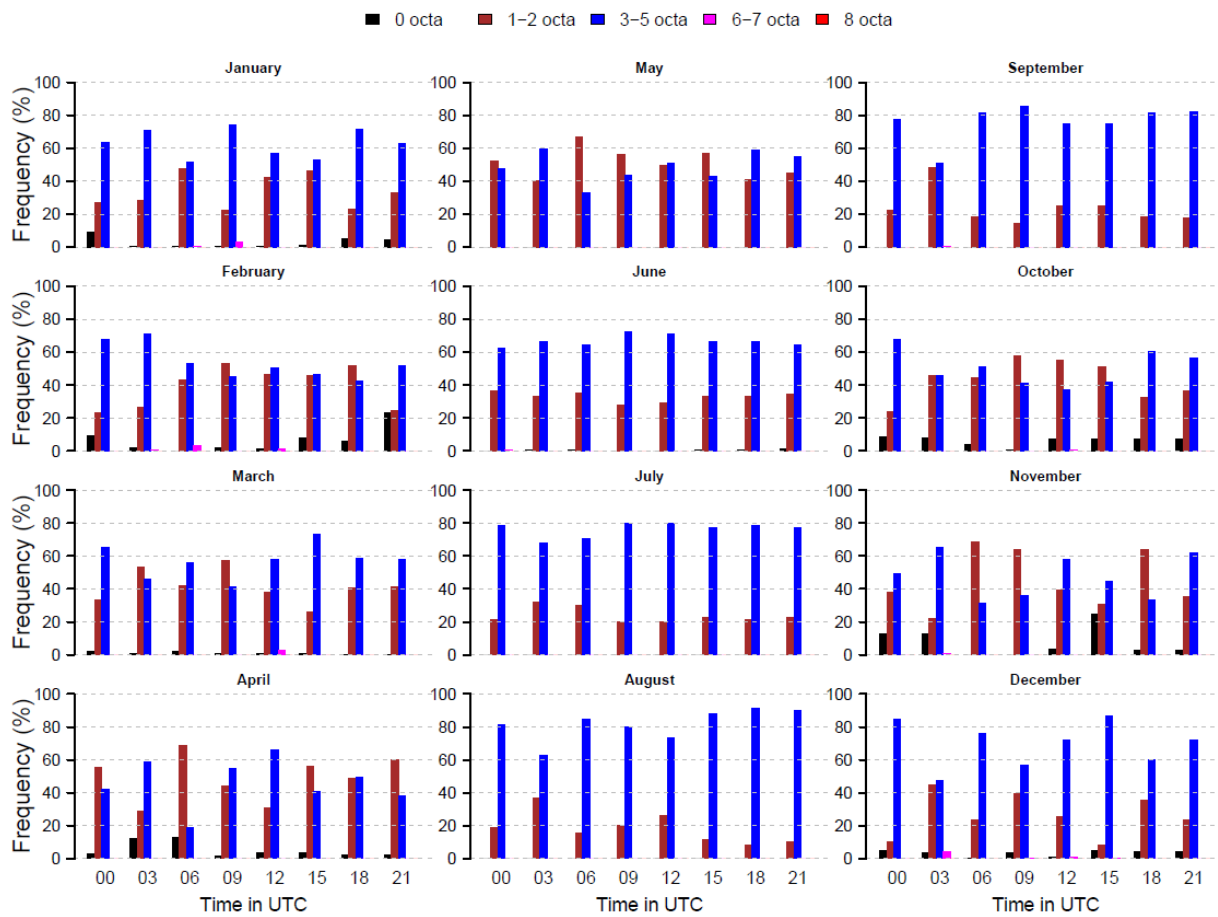
**TABLE : VI**

TABLE: Mean daily atmospheric pressure (hPa) at mean sea level (msl) at standard times of synoptic observation (UTC).

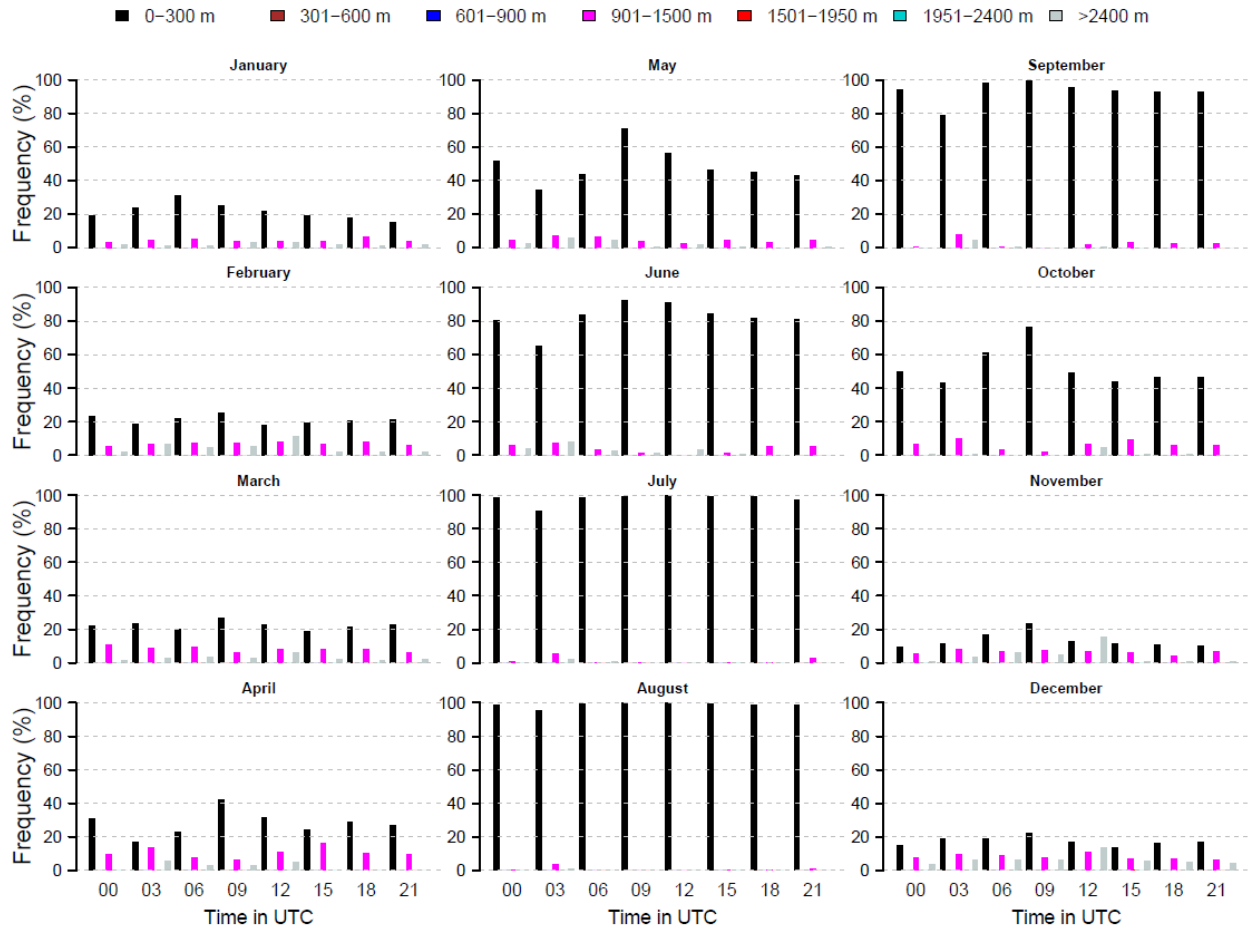
<b>DATE</b>	<b>0000</b>	<b>0300</b>	<b>0600</b>	<b>1200</b>	<b>1800</b>
1	1002.9	1005.0	1003.9	1000.8	1002.7
2	1002.2	1004.5	1003.6	1000.4	1002.3
3	1002.1	1004.4	1001.2	1001.1	1003.3
4	1002.4	1004.6	1003.8	1000.8	1003.1
5	1002.8	1004.6	1003.6	1000.6	1002.2
6	1001.6	1003.8	1003.3	1000.4	1002.0
7	1001.8	1003.8	1003.3	1001.1	1003.2
8	1002.8	1005.3	1004.5	1001.5	1003.4
9	1003.1	1005.0	1004.1	1000.9	1002.6
10	1001.9	1003.9	1003.3	1000.4	1002.3
11	1001.6	1004.0	1003.4	1000.5	1002.8
12	1002.4	1003.8	1004.3	1001.1	1002.7
13	1002.7	1004.7	1004.5	1001.5	1003.3
14	1003.0	1005.6	1005.6	1002.8	1004.5
15	1003.7	1006.4	1005.9	1003.5	1005.3
16	1004.8	1006.9	1006.8	1003.8	1005.6
17	1005.0	1007.0	1006.8	1003.7	1005.3
18	1004.8	1007.0	1007.0	1004.2	1005.9
19	1004.8	1007.5	1006.9	1003.8	1005.4
20	1005.4	1006.8	1006.3	1002.7	1004.7
21	1003.9	1006.0	1005.5	1002.0	1003.6
22	1003.0	1005.3	1005.0	1001.5	1003.2
23	1002.5	1004.7	1004.3	1001.3	1003.0
24	1002.3	1004.7	1004.0	1000.8	1002.4
25	1002.0	1004.0	1003.8	1001.0	1003.1
26	1002.6	1004.9	1004.8	1002.4	1003.9
27	1003.1	1005.3	1004.9	1001.9	1003.4
28	1003.5	1005.1	1004.8	1001.8	1003.7
29	1003.0	1005.6	1005.8	1003.5	1005.6
30	1005.0	1007.8	1007.7	1004.7	1006.1
31	1005.6	1007.7	1007.6	1004.1	1005.6
<b>MEAN</b>	<b>1003.2</b>	<b>1005.3</b>	<b>1004.8</b>	<b>1002.0</b>	<b>1003.7</b>

# DIAGRAMS

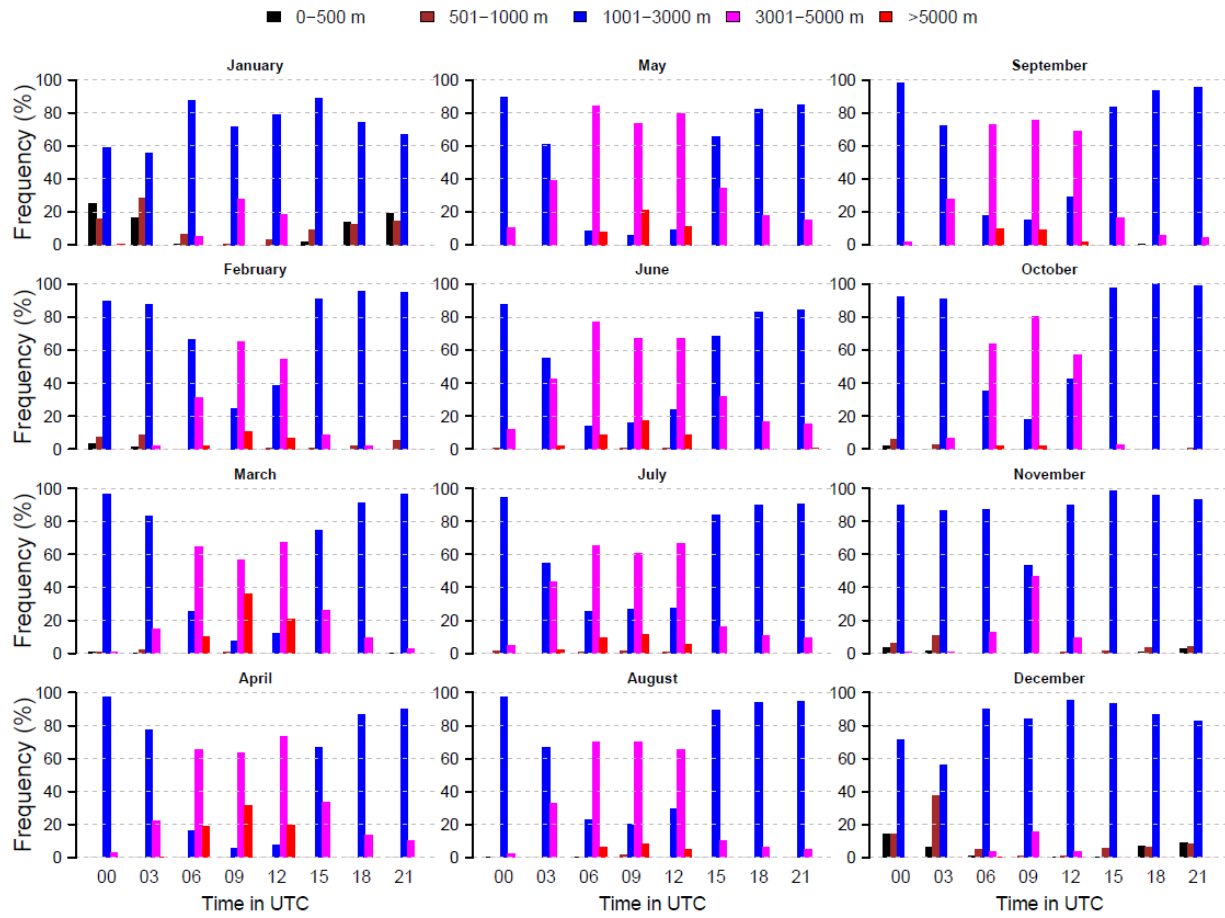
## Frequency of Low cloud amount



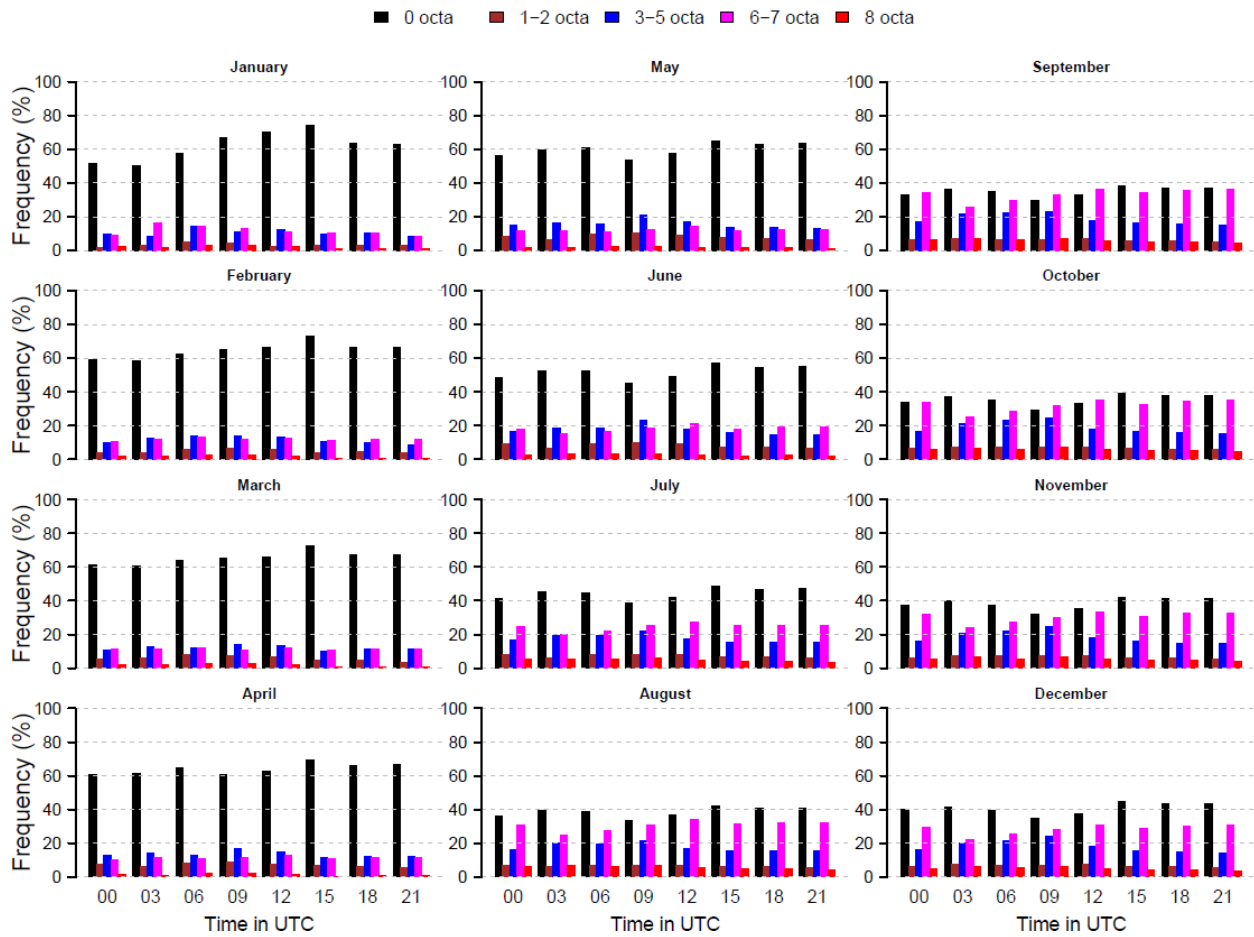
## Frequency of Height of Low cloud



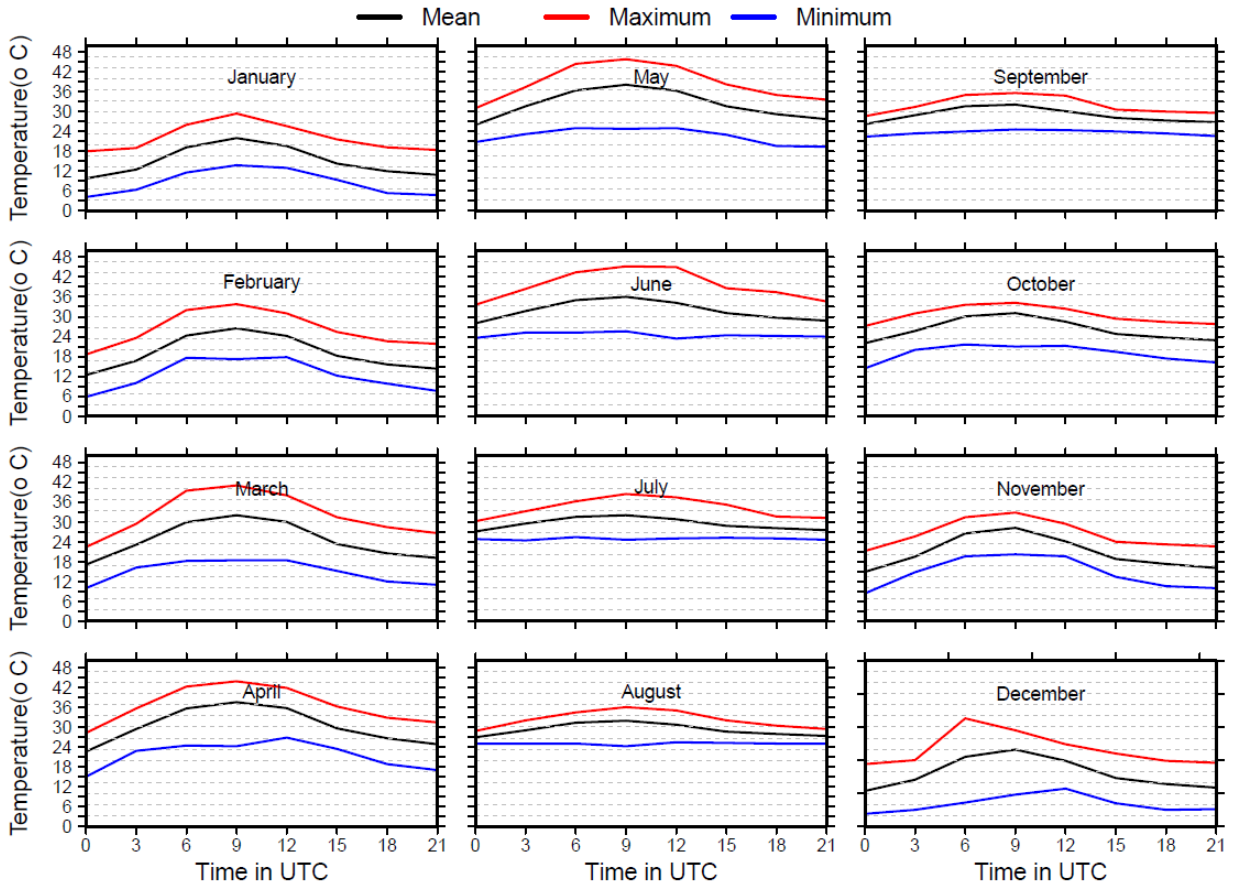
## Frequency of Visibility



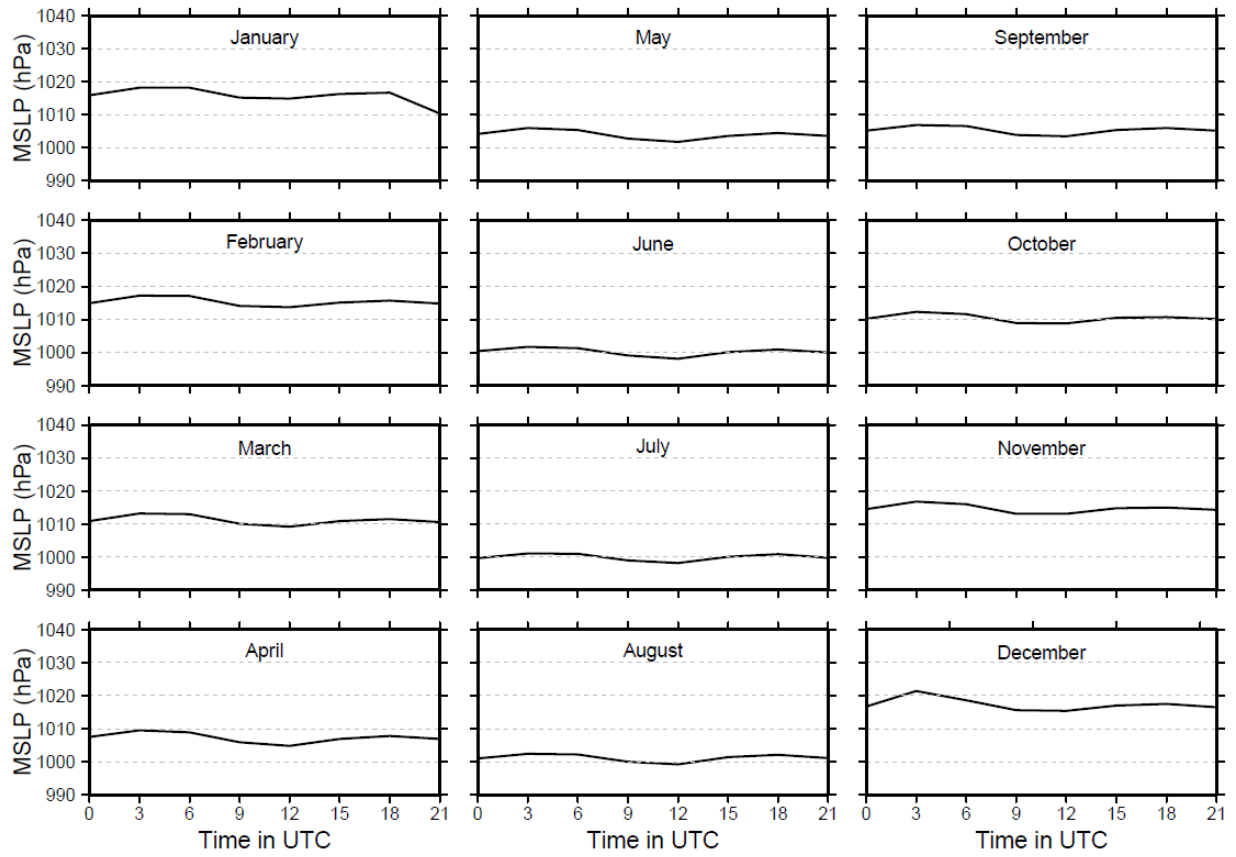
## Frequency of Total Cloud Amount



## Diurnal variation of Temperature



## Diurnal variation of Mean Sea Level Pressure



## Diurnal variation of Station Level Pressure

