



2017-2021

AERODROME CLIMATOLOGICAL SUMMARIES

**KADAPA
AIRPORT**

KADAPA

OFFICE OF CLIMATE RESEARCH & SERVICES
INDIA METEOROLOGICAL DEPARTMENT



PREFACE

The aviation industry in India has emerged as one of the fastest growing industries in the country during the last three years. India is currently considered the third largest domestic civil aviation market in the world. Same time meteorological information plays an essential role for all sectors of the Aviation industry - airlines, airports, air traffic control and management for taking correct and timely decisions that makes navigation safe, efficient and cost effective.

Aircrafts fly in the atmosphere where most of the weather systems develop and decay. Information of important meteorological parameters related to the safety of aircraft such as atmospheric Pressure, Temperature, Wind direction and speed, Visibility, Runway Visual Range (RVR) and Cloud Height are needed for smooth operations of an aircraft from take off to the landing phase. It is therefore very essential that climatology of an airport is available as a ready reckoner to understand mean number of occurrences (frequencies) of various weather elements in different temporal scales which affect aircraft operations round the clock. Aeronautical Climatological Summary of an Airport provides this vital information. Aeronautical Climatological Summaries for various National and International Airports are being prepared and updated at regular interval. The publication is prepared on the pattern of WMO Models A, B, C, D, E and Table VI in accordance with the procedures laid down in Technical Regulations as per International Civil Aviation Organization (ICAO) standards. The details of these models are given in Appendix-1. The present publication has been prepared for **Kadapa Airport, Kadapa** (Latitude 14° 20'N, Longitude 78° 50'E and Altitude 129.20m) using the meteorological data for the period 2017-2021.

The successful publication of this report is achieved by valuable guidance and constant Encouragement by Dr. (Mrs) K. Naga Ratna , Sc.E, Dr. A. Dharma Raju, Sc. C to the officials involved in this work at Climatological Unit and local Meteorological Office level. The valuable contributions towards quality of work and keying in of huge volumes of data were made by Smt. M. Suguna Kumari, Met A, Smt. N. Sujatha, Met A, Sri. K. Jayakar , Met A,E.Madhava Reddy,S.A, C.Raja Mannar, S.A, R.Sudheer Kumar, S.A and P.Mallikarjuna Reddy, S.A along with Climatological Unit staff.

The entire work of this publication has been done by a group of officers and staff members led by Dr. Sudeep Kumar. B. L, Scientist C, under the guidance of Shri. A.D. Tathe, Scientist F & Head, Climate Data Management and Services (CDMS) Group. Valuable contributions were made by Smt. S.H. Joshi, Met. A, Shri Pradeep Rajmane, Met. B and Smt. Reshma Pathan, S.A. towards preparation of the summaries. I appreciate the help rendered by the entire team. I am hopeful that this publication will serve as a source of useful information to aviation services.

K. S. Hosalikar
Head CRS

CONTENTS

Sn	Model name	Description	Pages
1	<u>MODEL - A</u>	Runway Visual Range or Visibility and/or the height of the base of lowest cloud layer	1 - 12
2	<u>MODEL - B</u>	Visibility	13 - 24
3	<u>MODEL - C</u>	Height of base of the lowest cloud	25 - 36
4	<u>MODEL - D</u>	Wind direction and wind speed	37 - 132
5	<u>MODEL - E</u>	Temperature	133 - 144
6	<u>TABLE - VI</u>	Atmospheric pressure	145 - 156
7	<u>DIAGRAMS</u>	Low cloud, total cloud, Visibility, Pressure and Temperature	157 - 163

DESCRIPTION OF MODELS

Model type	Description
MODEL A	Monthly mean number of occurrences of runway visual range / visibility and/or the height of the base of lowest cloud layer (in metres), covering more than 4/8 th of the sky below specified values at the specified time.
MODEL B	Monthly mean number of visibility below specified values (in metres) at the specified time.
MODEL C	Monthly mean number of occurrences of the height of the base (in metres) of the lowest cloud layer covering more than 4/8th of the sky below specified values at the specified time.
MODEL D	Monthly mean number of occurrences of concurrent wind direction (30 degree sector) and wind speed (knots) within specified ranges.
MODEL E	Monthly mean number of occurrences of surface (screen) temperature (°C) in ranges of 5 degrees of the specified time.
TABLE VI	Monthly mean atmospheric pressure (hPa) at the reference level / mean sea level (for low level stations) at standard times for surface synoptic observations.

THE TERMS USED IN PUBLICATION WITH DESCRIPTION AND ITS UNITS.

S.N.	Terms	Description and Units
1	Time	Time of observation in universal time coordinated (UTC).
2	HS	The height of base of lowest cloud layer covering more than 4/8 of the sky (metres).
3	Visibility	Horizontal visibility (metres).
4	RVR	Runway Visual Range (metres).
5	Wind Direction	Direction of wind from true north (degrees).
6	Wind speed	The speed of wind(knots).
7	Pressure	Mean sea level pressure (hPa).
8	Temperature	Screen temperatures (degree Celsius).

MONTH: JANUARY

MODEL : A

Table: Mean number of occurrences of Runway Visual Range or Visibility and/or the height of the base of lowest cloud layer covering more than 4/8 th of the sky (HS), below specified values and time.

Time UTC	Runway Visual Range OR Visibility / HS (metres)								
	VIS<100	<200	<400	<800	<1500	<1500	<3000	<8000	TOTAL
	HS		<30	<60	<90	<150	<300	<600	
0									
1									
2									
3						3.4	8.0	6.0	17.4
4						0.6	5.8	15.6	22.0
5							1.2	21.0	22.2
6							0.2	22.2	22.4
7								26.4	26.4
8								26.6	26.6
9								23.4	23.4
10				0.2				26.8	27.0
11				0.2				24.4	24.6
12								9.2	9.2
13									
14									
15									
16									
17									
18									
19									
20									
21									
22									
23									
TOTAL				0.4		4.0	15.2	201.6	221.2

MONTH: FEBRUARY

MODEL: A

Table: Mean number of occurrences of Runway Visual Range or Visibility and/or the height of the base of lowest cloud layer covering more than 4/8 th of the sky (HS), below specified values and time.

Time UTC	Runway Visual Range OR Visibility / HS (metres)								TOTAL
	VIS<100	<200	<400	<800	<1500	<1500	<3000	<8000	
	HS		<30	<60	<90	<150	<300	<600	
0									
1			0.2					0.2	0.4
2							1.4	2.8	4.2
3							5.6	15.4	21.0
4							1.6	20.8	22.4
5	21.0							22.4	43.4
6								21.6	21.6
7								24.8	24.8
8								25.2	25.2
9								24.0	24.0
10								24.6	24.6
11								20.4	20.4
12								8.8	8.8
13									
14									
15									
16									
17									
18									
19									
20									
21									
22									
23									
TOTAL	21.0		0.2				8.6	211.0	240.8

MONTH: MARCH

MODEL: A

Table: Mean number of occurrences of Runway Visual Range or Visibility and/or the height of the base of lowest cloud layer covering more than 4/8 th of the sky (HS), below specified values and time.

Time UTC	Runway Visual Range OR Visibility / HS (metres)								
	VIS<100	<200	<400	<800	<1500	<1500	<3000	<8000	TOTAL
	HS		<30	<60	<90	<150	<300	<600	
0									
1								3.8	3.8
2								15.0	15.0
3							0.6	21.8	22.4
4				0.2				26.6	26.8
5								26.6	26.6
6								25.4	25.4
7								26.2	26.2
8								25.0	25.0
9				0.2				21.2	21.4
10								24.4	24.4
11								16.4	16.4
12								7.6	7.6
13									
14									
15									
16									
17									
18									
19									
20									
21									
22									
23									
TOTAL				0.4			0.6	240.0	241.0

MONTH: APRIL

MODEL: A

Table: Mean number of occurrences of Runway Visual Range or Visibility and/or the height of the base of lowest cloud layer covering more than 4/8 th of the sky (HS), below specified values and time.

Time UTC	Runway Visual Range OR Visibility / HS (metres)								
	VIS<100	<200	<400	<800	<1500	<1500	<3000	<8000	TOTAL
	HS		<30	<60	<90	<150	<300	<600	
0									
1							0.2	1.6	1.8
2								15.0	15.0
3								22.2	22.2
4								21.4	21.4
5								21.2	21.2
6								21.4	21.4
7								22.2	22.2
8								20.0	20.0
9								17.8	17.8
10								18.2	18.2
11								18.2	18.2
12								3.6	3.6
13								0.2	0.2
14									
15									
16									
17									
18									
19									
20									
21									
22									
23									
TOTAL							0.2	203.0	203.2

MONTH: MAY

MODEL: A

Table: Mean number of occurrences of Runway Visual Range or Visibility and/or the height of the base of lowest cloud layer covering more than 4/8 th of the sky (HS), below specified values and time.

Time UTC	Runway Visual Range OR Visibility / HS (metres)								
	VIS<100	<200	<400	<800	<1500	<1500	<3000	<8000	TOTAL
	HS		<30	<60	<90	<150	<300	<600	
0									
1								0.2	0.2
2								12.0	12.0
3								22.0	22.0
4								23.4	23.4
5								22.8	22.8
6								21.2	21.2
7								22.2	22.2
8								23.2	23.2
9								18.6	18.6
10								17.8	17.8
11								18.2	18.2
12								7.4	7.4
13								0.4	0.4
14									
15									
16									
17									
18									
19									
20									
21									
22									
23									
TOTAL								209.4	209.4

MONTH: JUNE

MODEL: A

Table: Mean number of occurrences of Runway Visual Range or Visibility and/or the height of the base of lowest cloud layer covering more than 4/8 th of the sky (HS), below specified values and time.

Time UTC	Runway Visual Range OR Visibility / HS (metres)								
	VIS<100	<200	<400	<800	<1500	<1500	<3000	<8000	TOTAL
	HS		<30	<60	<90	<150	<300	<600	
0									
1									
2								11.6	11.6
3								29.0	29.0
4								27.8	27.8
5				0.2				28.2	28.4
6								27.0	27.0
7								27.6	27.6
8								27.6	27.6
9						0.2		22.2	22.4
10							0.2	23.0	23.2
11								18.2	18.2
12								4.0	4.0
13								0.2	0.2
14									
15									
16									
17									
18									
19									
20									
21									
22									
23									
TOTAL				0.2		0.2	0.2	246.4	247.0

MONTH: JULY

MODEL: A

Table: Mean number of occurrences of Runway Visual Range or Visibility and/or the height of the base of lowest cloud layer covering more than 4/8 th of the sky (HS), below specified values and time.

Time UTC	Runway Visual Range OR Visibility / HS (metres)								
	VIS<100	<200	<400	<800	<1500	<1500	<3000	<8000	TOTAL
	HS		<30	<60	<90	<150	<300	<600	
0									
1									
2								12.8	12.8
3								25.8	25.8
4								26.2	26.2
5	26.4						0.2	25.8	52.4
6	26.0							29.6	55.6
7	29.8							29.8	59.6
8								30.6	30.6
9								28.8	28.8
10								30.2	30.2
11								24.2	24.2
12								6.8	6.8
13								0.4	0.4
14									
15									
16									
17									
18									
19									
20									
21									
22									
23									
TOTAL	82.2						0.2	271.0	353.4

MONTH: AUGUST

MODEL: A

Table: Mean number of occurrences of Runway Visual Range or Visibility and/or the height of the base of lowest cloud layer covering more than 4/8 th of the sky (HS), below specified values and time.

Time UTC	Runway Visual Range OR Visibility / HS (metres)								
	VIS<100	<200	<400	<800	<1500	<1500	<3000	<8000	TOTAL
	HS		<30	<60	<90	<150	<300	<600	
0									
1									
2				0.2			0.2	12.0	12.4
3							0.2	24.8	25.0
4							0.2	26.2	26.4
5				0.2				26.4	26.6
6								29.6	29.6
7								29.8	29.8
8								30.0	30.0
9								29.4	29.4
10						0.2	0.2	30.2	30.6
11								24.2	24.2
12								10.8	10.8
13								0.6	0.6
14									
15									
16									
17									
18									
19									
20									
21									
22									
23									
TOTAL				0.4		0.2	0.8	274.0	275.4

MONTH: SEPTEMBER

MODEL: A

Table: Mean number of occurrences of Runway Visual Range or Visibility and/or the height of the base of lowest cloud layer covering more than 4/8 th of the sky (HS), below specified values and time.

Time UTC	Runway Visual Range OR Visibility / HS (metres)								
	VIS<100	<200	<400	<800	<1500	<1500	<3000	<8000	TOTAL
	HS		<30	<60	<90	<150	<300	<600	
0									
1								0.2	0.2
2							0.2	11.8	12.0
3								23.6	23.6
4							0.2	26.2	26.4
5							0.2	26.2	26.4
6								28.8	28.8
7								29.2	29.2
8								29.6	29.6
9				0.2				26.6	26.8
10								27.6	27.6
11							0.2	21.0	21.2
12								7.0	7.0
13								0.4	0.4
14									
15									
16									
17									
18									
19									
20									
21									
22									
23									
TOTAL				0.2			0.8	258.2	259.2

MONTH: OCTOBER

MODEL: A

Table: Mean number of occurrences of Runway Visual Range or Visibility and/or the height of the base of lowest cloud layer covering more than 4/8 th of the sky (HS), below specified values and time.

Time UTC	Runway Visual Range OR Visibility / HS (metres)								
	VIS<100	<200	<400	<800	<1500	<1500	<3000	<8000	TOTAL
	HS		<30	<60	<90	<150	<300	<600	
0									
1									
2							0.4	11.4	11.8
3							1.8	22.2	24.0
4							1.0	28.4	29.4
5				0.2			0.2	28.8	29.2
6								29.6	29.6
7								30.4	30.4
8							0.2	30.8	31.0
9								28.2	28.2
10							0.4	29.2	29.6
11						0.2		25.0	25.2
12								13.4	13.4
13								0.2	0.2
14									
15									
16									
17									
18									
19									
20									
21									
22									
23									
TOTAL				0.2		0.2	4.0	277.6	282.0

MONTH: NOVEMBER

MODEL: A

Table: Mean number of occurrences of Runway Visual Range or Visibility and/or the height of the base of lowest cloud layer covering more than 4/8 th of the sky (HS), below specified values and time.

Time UTC	Runway Visual Range OR Visibility / HS (metres)								
	VIS<100	<200	<400	<800	<1500	<1500	<3000	<8000	TOTAL
	HS		<30	<60	<90	<150	<300	<600	
0									
1								0.4	0.4
2						0.8	1.2	3.2	5.2
3						0.6	5.4	14.4	20.4
4							3.6	19.6	23.2
5							0.8	22.0	22.8
6							0.4	22.6	23.0
7							0.4	29.2	29.6
8							1.0	28.4	29.4
9						0.2	0.4	26.8	27.4
10						0.2	0.4	29.2	29.8
11						0.2	0.6	25.0	25.8
12						0.2		11.6	11.8
13									
14									
15									
16									
17									
18									
19									
20									
21									
22									
23									
TOTAL						2.2	14.2	232.4	248.8

MONTH: DECEMBER

MODEL: A

Table: Mean number of occurrences of Runway Visual Range or Visibility and/or the height of the base of lowest cloud layer covering more than 4/8 th of the sky (HS), below specified values and time.

Time UTC	Runway Visual Range OR Visibility / HS (metres)								
	VIS<100	<200	<400	<800	<1500	<1500	<3000	<8000	TOTAL
	HS		<30	<60	<90	<150	<300	<600	
0									
1									
2							0.2		0.2
3						3.6	11.2	9.4	24.2
4						0.6	9.0	14.8	24.4
5							1.2	23.6	24.8
6							0.2	27.6	27.8
7							0.2	30.4	30.6
8								30.4	30.4
9								28.4	28.4
10								29.4	29.4
11								29.2	29.2
12								16.0	16.0
13									
14									
15									
16									
17									
18									
19									
20									
21									
22									
23									
TOTAL						4.2	22.0	239.2	265.4

MONTH : JANUARY

MODEL : B

TABLE: Mean number of occurrences of visibility below specified values and time.

Time UTC	VISIBILITY (metres)								
	<200	<400	<600	<800	<1500	<3000	<5000	<8000	TOTAL
0									
1									
2									
3					3.4	8.0	4.8	1.2	17.4
4					0.6	5.8	13.2	2.4	22.0
5						1.2	9.6	11.4	22.2
6						0.2	3.2	19.0	22.4
7							0.2	26.2	26.4
8								26.6	26.6
9								23.4	23.4
10			0.2					26.8	27.0
11								24.4	24.4
12								9.2	9.2
13									
14									
15									
16									
17									
18									
19									
20									
21									
22									
23									
TOTAL			0.2		4.0	15.2	31.0	170.6	221.0

MONTH : FEBRUARY

MODEL : B

TABLE: Mean number of occurrences of visibility below specified values and time.

Time UTC	VISIBILITY (metres)								
	<200	<400	<600	<800	<1500	<3000	<5000	<8000	TOTAL
0									
1		0.2					0.2		0.4
2						1.4	2.8		4.2
3						5.6	11.4	4.0	21.0
4						1.6	13.2	7.6	22.4
5							3.8	18.6	22.4
6								21.6	21.6
7							0.2	24.6	24.8
8								25.2	25.2
9								24.0	24.0
10								24.6	24.6
11								20.4	20.4
12								8.8	8.8
13									
14									
15									
16									
17									
18									
19									
20									
21									
22									
23									
TOTAL		0.2				8.6	31.6	179.4	219.8

MONTH : MARCH

MODEL : B

TABLE: Mean number of occurrences of visibility below specified values and time.

Time UTC	VISIBILITY (metres)								
	<200	<400	<600	<800	<1500	<3000	<5000	<8000	TOTAL
0									
1							2.2	1.6	3.8
2							3.0	12.0	15.0
3						0.6	5.4	16.4	22.4
4			0.2				6.2	20.4	26.8
5							0.4	26.2	26.6
6								25.4	25.4
7								26.2	26.2
8								25.0	25.0
9				0.2				21.2	21.4
10								24.4	24.4
11								16.4	16.4
12								7.6	7.6
13									
14									
15									
16									
17									
18									
19									
20									
21									
22									
23									
TOTAL			0.2	0.2		0.6	17.2	222.8	241.0

MONTH : APRIL

MODEL : B

TABLE: Mean number of occurrences of visibility below specified values and time.

Time UTC	VISIBILITY (metres)								
	<200	<400	<600	<800	<1500	<3000	<5000	<8000	TOTAL
0									
1						0.2	1.6		1.8
2							3.8	11.2	15.0
3							5.4	16.8	22.2
4							3.8	17.6	21.4
5	0.2						2.0	19.2	21.4
6							0.8	20.6	21.4
7								22.2	22.2
8								20.0	20.0
9								17.8	17.8
10								18.2	18.2
11	0.2							18.2	18.4
12								3.6	3.6
13								0.2	0.2
14									
15									
16									
17									
18									
19									
20									
21									
22									
23									
TOTAL	0.4					0.2	17.4	185.6	203.6

MONTH : MAY

MODEL : B

TABLE: Mean number of occurrences of visibility below specified values and time.

Time UTC	VISIBILITY (metres)								
	<200	<400	<600	<800	<1500	<3000	<5000	<8000	TOTAL
0									
1								0.2	0.2
2							0.4	11.6	12.0
3								22.0	22.0
4								23.4	23.4
5								22.8	22.8
6								21.2	21.2
7								22.2	22.2
8								23.2	23.2
9								18.6	18.6
10								17.8	17.8
11								18.2	18.2
12								7.4	7.4
13								0.4	0.4
14									
15									
16									
17									
18									
19									
20									
21									
22									
23									
TOTAL							0.4	209.0	209.4

MONTH : JUNE

MODEL : B

TABLE: Mean number of occurrences of visibility below specified values and time.

Time UTC	VISIBILITY (metres)								
	<200	<400	<600	<800	<1500	<3000	<5000	<8000	TOTAL
0									
1									
2								11.6	11.6
3								29.0	29.0
4								27.8	27.8
5	0.2			0.2				28.2	28.6
6								27.0	27.0
7								27.6	27.6
8								27.6	27.6
9					0.2		0.2	22.0	22.4
10						0.2		23.0	23.2
11								18.2	18.2
12								4.0	4.0
13								0.2	0.2
14									
15									
16									
17									
18									
19									
20									
21									
22									
23									
TOTAL	0.2			0.2	0.2	0.2	0.2	246.2	247.2

MONTH : JULY

MODEL : B

TABLE: Mean number of occurrences of visibility below specified values and time.

Time UTC	VISIBILITY (metres)								
	<200	<400	<600	<800	<1500	<3000	<5000	<8000	TOTAL
0									
1									
2								12.8	12.8
3								25.8	25.8
4								26.2	26.2
5						0.2		25.8	26.0
6							0.2	29.4	29.6
7							0.2	29.6	29.8
8							0.2	30.4	30.6
9								28.8	28.8
10							0.2	30.0	30.2
11							0.4	23.8	24.2
12								6.8	6.8
13								0.4	0.4
14									
15									
16									
17									
18									
19									
20									
21									
22									
23									
TOTAL						0.2	1.2	269.8	271.2

MONTH : AUGUST

MODEL : B

TABLE: Mean number of occurrences of visibility below specified values and time.

Time UTC	VISIBILITY (metres)								
	<200	<400	<600	<800	<1500	<3000	<5000	<8000	TOTAL
0									
1									
2			0.2			0.2	0.8	11.2	12.4
3						0.2	1.0	23.8	25.0
4						0.2	0.8	25.4	26.4
5			0.2				0.4	26.0	26.6
6							0.8	28.8	29.6
7							1.0	28.8	29.8
8							0.8	29.2	30.0
9							0.6	28.8	29.4
10					0.2	0.2	0.8	29.4	30.6
11							0.4	23.8	24.2
12							0.4	10.4	10.8
13							0.2	0.4	0.6
14									
15									
16									
17									
18									
19									
20									
21									
22									
23									
TOTAL			0.4		0.2	0.8	8.0	266.0	275.4

MONTH : SEPTEMBER

MODEL : B

TABLE: Mean number of occurrences of visibility below specified values and time.

Time UTC	VISIBILITY (metres)								
	<200	<400	<600	<800	<1500	<3000	<5000	<8000	TOTAL
0									
1								0.2	0.2
2						0.2	1.0	10.8	12.0
3							1.6	22.0	23.6
4						0.2	1.0	25.2	26.4
5						0.2	0.4	25.8	26.4
6							0.8	28.0	28.8
7							0.6	28.6	29.2
8							0.2	29.4	29.6
9			0.2					26.6	26.8
10							0.2	27.4	27.6
11						0.2	0.2	20.8	21.2
12							0.2	6.8	7.0
13							0.2	0.2	0.4
14									
15									
16									
17									
18									
19									
20									
21									
22									
23									
TOTAL			0.2			0.8	6.4	251.8	259.2

MONTH : OCTOBER

MODEL : B

TABLE: Mean number of occurrences of visibility below specified values and time.

Time UTC	VISIBILITY (metres)								
	<200	<400	<600	<800	<1500	<3000	<5000	<8000	TOTAL
0									
1									
2						0.4	3.2	8.2	11.8
3						1.8	7.6	14.6	24.0
4						1.0	7.4	21.0	29.4
5	0.2					0.2	4.8	24.0	29.2
6							2.0	27.6	29.6
7							1.6	28.8	30.4
8						0.2	1.0	29.8	31.0
9							0.2	28.0	28.2
10						0.4		29.2	29.6
11					0.2		0.6	24.4	25.2
12							0.4	13.0	13.4
13							0.2		0.2
14									
15									
16									
17									
18									
19									
20									
21									
22									
23									
TOTAL	0.2				0.2	4.0	29.0	248.6	282.0

MONTH : NOVEMBER

MODEL : B

TABLE: Mean number of occurrences of visibility below specified values and time.

Time UTC	VISIBILITY (metres)								
	<200	<400	<600	<800	<1500	<3000	<5000	<8000	TOTAL
0									
1							0.2	0.2	0.4
2					0.8	1.2	2.2	1.0	5.2
3					0.6	5.4	6.4	7.6	20.0
4						3.6	9.8	9.4	22.8
5	0.2					0.8	7.4	14.2	22.6
6						0.4	5.0	17.2	22.6
7						0.4	3.8	25.2	29.4
8						1.0	0.8	27.0	28.8
9					0.2	0.4	1.2	25.2	27.0
10					0.2	0.4	1.2	27.6	29.4
11					0.2	0.6	0.8	23.6	25.2
12					0.2		0.4	11.0	11.6
13									
14									
15									
16									
17									
18									
19									
20									
21									
22									
23									
TOTAL	0.2				2.2	14.2	39.2	189.2	245.0

MONTH : DECEMBER

MODEL : B

TABLE: Mean number of occurrences of visibility below specified values and time.

Time UTC	VISIBILITY (metres)								
	<200	<400	<600	<800	<1500	<3000	<5000	<8000	TOTAL
0									
1									
2						0.2			0.2
3					3.6	11.2	6.2	3.0	24.0
4					0.6	9.0	10.2	4.6	24.4
5						1.2	15.0	8.6	24.8
6						0.2	7.4	20.2	27.8
7						0.2	2.8	27.4	30.4
8							0.6	29.8	30.4
9							0.4	28.0	28.4
10							0.2	29.2	29.4
11							0.8	28.4	29.2
12							0.6	15.4	16.0
13									
14									
15									
16									
17									
18									
19									
20									
21									
22									
23									
TOTAL					4.2	22.0	44.2	194.6	265.0

MONTH : JANUARY

MODEL : C

TABLE: Mean number of occurrences of the height of the base of the lowest cloud layer (metres) covering more than 4/8 of the sky below specified values and time.

Time (UTC)	Height of the base of the lowest cloud layer (metres)						
	<30	<60	<90	<150	<300	<450	TOTAL
0							
1							
2							
3							
4							
5							
6							
7							
8							
9							
10							
11							
12							
13							
14							
15							
16							
17							
18							
19							
20							
21							
22							
23							
TOTAL							

MONTH : FEBRUARY

MODEL : C

TABLE: Mean number of occurrences of the height of the base of the lowest cloud layer (metres) covering more than 4/8 of the sky below specified values and time.

Time (UTC)	Height of the base of the lowest cloud layer (metres)						
	<30	<60	<90	<150	<300	<450	TOTAL
0							
1							
2							
3							
4							
5							
6							
7							
8							
9							
10							
11							
12							
13							
14							
15							
16							
17							
18							
19							
20							
21							
22							
23							
TOTAL							

MONTH : MARCH

MODEL : C

TABLE: Mean number of occurrences of the height of the base of the lowest cloud layer (metres) covering more than 4/8 of the sky below specified values and time.

Time (UTC)	Height of the base of the lowest cloud layer (metres)						
	<30	<60	<90	<150	<300	<450	TOTAL
0							
1							
2							
3							
4							
5							
6							
7							
8							
9							
10							
11							
12							
13							
14							
15							
16							
17							
18							
19							
20							
21							
22							
23							
TOTAL							

MONTH : APRIL

MODEL : C

TABLE: Mean number of occurrences of the height of the base of the lowest cloud layer (metres) covering more than 4/8 of the sky below specified values and time.

Time (UTC)	Height of the base of the lowest cloud layer (metres)						
	<30	<60	<90	<150	<300	<450	TOTAL
0							
1							
2							
3							
4							
5							
6							
7							
8							
9							
10							
11							
12							
13							
14							
15							
16							
17							
18							
19							
20							
21							
22							
23							
TOTAL							

MONTH : MAY

MODEL : C

TABLE: Mean number of occurrences of the height of the base of the lowest cloud layer (metres) covering more than 4/8 of the sky below specified values and time.

Time (UTC)	Height of the base of the lowest cloud layer (metres)						
	<30	<60	<90	<150	<300	<450	TOTAL
0							
1							
2							
3							
4							
5							
6							
7							
8							
9							
10							
11							
12							
13							
14							
15							
16							
17							
18							
19							
20							
21							
22							
23							
TOTAL							

MONTH : JUNE

MODEL : C

TABLE: Mean number of occurrences of the height of the base of the lowest cloud layer (metres) covering more than 4/8 of the sky below specified values and time.

Time (UTC)	Height of the base of the lowest cloud layer (metres)						
	<30	<60	<90	<150	<300	<450	TOTAL
0							
1							
2							
3							
4							
5							
6							
7							
8							
9							
10							
11							
12							
13							
14							
15							
16							
17							
18							
19							
20							
21							
22							
23							
TOTAL							

MONTH : JULY

MODEL : C

TABLE: Mean number of occurrences of the height of the base of the lowest cloud layer (metres) covering more than 4/8 of the sky below specified values and time.

Time (UTC)	Height of the base of the lowest cloud layer (metres)						
	<30	<60	<90	<150	<300	<450	TOTAL
0							
1							
2							
3							
4							
5							
6							
7							
8							
9							
10							
11							
12							
13							
14							
15							
16							
17							
18							
19							
20							
21							
22							
23							
TOTAL							

MONTH : AUGUST

MODEL : C

TABLE: Mean number of occurrences of the height of the base of the lowest cloud layer (metres) covering more than 4/8 of the sky below specified values and time.

Time (UTC)	Height of the base of the lowest cloud layer (metres)						
	<30	<60	<90	<150	<300	<450	TOTAL
0							
1							
2							
3							
4							
5							
6							
7							
8							
9							
10							
11							
12							
13							
14							
15							
16							
17							
18							
19							
20							
21							
22							
23							
TOTAL							

MONTH : SEPTEMBER

MODEL : C

TABLE: Mean number of occurrences of the height of the base of the lowest cloud layer (metres) covering more than 4/8 of the sky below specified values and time.

Time (UTC)	Height of the base of the lowest cloud layer (metres)						
	<30	<60	<90	<150	<300	<450	TOTAL
0							
1							
2							
3							
4							
5							
6							
7							
8							
9							
10							
11							
12							
13							
14							
15							
16							
17							
18							
19							
20							
21							
22							
23							
TOTAL							

MONTH : OCTOBER

MODEL : C

TABLE: Mean number of occurrences of the height of the base of the lowest cloud layer (metres) covering more than 4/8 of the sky below specified values and time.

Time (UTC)	Height of the base of the lowest cloud layer (metres)						
	<30	<60	<90	<150	<300	<450	TOTAL
0							
1							
2							
3							
4							
5							
6							
7							
8							
9							
10							
11							
12							
13							
14							
15							
16							
17							
18							
19							
20							
21							
22							
23							
TOTAL							

MONTH : NOVEMBER

MODEL : C

TABLE: Mean number of occurrences of the height of the base of the lowest cloud layer (metres) covering more than 4/8 of the sky below specified values and time.

Time (UTC)	Height of the base of the lowest cloud layer (metres)						
	<30	<60	<90	<150	<300	<450	TOTAL
0							
1							
2							
3							
4							
5							
6							
7							
8							
9							
10							
11							
12							
13							
14							
15							
16							
17							
18							
19							
20							
21							
22							
23							
TOTAL							

MONTH : DECEMBER

MODEL : C

TABLE: Mean number of occurrences of the height of the base of the lowest cloud layer (metres) covering more than 4/8 of the sky below specified values and time.

Time (UTC)	Height of the base of the lowest cloud layer (metres)						
	<30	<60	<90	<150	<300	<450	TOTAL
0							
1							
2							
3							
4							
5							
6						0.2	0.2
7							
8							
9							
10							
11							
12							
13							
14							
15							
16							
17							
18							
19							
20							
21							
22							
23							
TOTAL						0.2	0.2

MONTH : JANUARY

TIME : 0 UTC

MODEL : D

TABLE: Mean number of occurrences of concurrent wind direction (in 30 degree sector) and wind speed in specified ranges.

Wind Direction in tens of degree	WIND SPEED (KNOTS)												
	0	1 TO 5	6 TO 10	11 TO 15	16 TO 20	21 TO 25	26 TO 30	31 TO 35	36 TO 40	41 TO 45	46 TO 50	> 50	TOTAL
Calm													
Variable													
35-36-01													
02-03-04													
05-06-07													
08-09-10													
11-12-13													
14-15-16													
17-18-19													
20-21-22													
23-24-25													
26-27-28													
29-30-31													
32-33-34													
TOTAL													0

MONTH : JANUARY

TIME : 3 UTC

MODEL : D

TABLE: Mean number of occurrences of concurrent wind direction (in 30 degree sector) and wind speed in specified ranges.

Wind Direction in tens of degree	WIND SPEED (KNOTS)												
	0	1 TO 5	6 TO 10	11 TO 15	16 TO 20	21 TO 25	26 TO 30	31 TO 35	36 TO 40	41 TO 45	46 TO 50	> 50	TOTAL
Calm	10.6												10.6
Variable													
35-36-01		0.8											0.8
02-03-04													
05-06-07		0.6	0.2										0.8
08-09-10		2.8	0.2										3.0
11-12-13		1.0	0.8										1.8
14-15-16													
17-18-19													
20-21-22													
23-24-25													
26-27-28		0.2											0.2
29-30-31													
32-33-34		0.2											0.2
TOTAL	10.6	5.6	1.2										17.4

MONTH : JANUARY

TIME : 6 UTC

MODEL : D

TABLE: Mean number of occurrences of concurrent wind direction (in 30 degree sector) and wind speed in specified ranges.

Wind Direction in tens of degree	WIND SPEED (KNOTS)												
	0	1 TO 5	6 TO 10	11 TO 15	16 TO 20	21 TO 25	26 TO 30	31 TO 35	36 TO 40	41 TO 45	46 TO 50	> 50	TOTAL
Calm	2.0												2.0
Variable													
35-36-01		0.2											0.2
02-03-04		0.8	0.2										1.0
05-06-07		1.4	1.6										3.0
08-09-10		5.2	5.4	0.8									11.4
11-12-13		0.6	2.2	1.4									4.2
14-15-16		0.2											0.2
17-18-19													
20-21-22		0.4											0.4
23-24-25													
26-27-28													
29-30-31													
32-33-34													
TOTAL	2.0	8.8	9.4	2.2									22.4

MONTH : JANUARY

TIME : 9 UTC

MODEL : D

TABLE: Mean number of occurrences of concurrent wind direction (in 30 degree sector) and wind speed in specified ranges.

Wind Direction in tens of degree	WIND SPEED (KNOTS)												
	0	1 TO 5	6 TO 10	11 TO 15	16 TO 20	21 TO 25	26 TO 30	31 TO 35	36 TO 40	41 TO 45	46 TO 50	> 50	TOTAL
Calm	1.6												1.6
Variable													
35-36-01		0.8											0.8
02-03-04		0.2	0.4										0.6
05-06-07		0.4	2.2		0.2								2.8
08-09-10		3.4	5.2	4.0	0.2								12.8
11-12-13		0.6	2.0	1.6									4.2
14-15-16		0.2											0.2
17-18-19		0.2											0.2
20-21-22													
23-24-25													
26-27-28													
29-30-31		0.2											0.2
32-33-34													
TOTAL	1.6	6.0	9.8	5.6	0.4								23.4

MONTH : JANUARY

TIME : 12 UTC

MODEL : D

TABLE: Mean number of occurrences of concurrent wind direction (in 30 degree sector) and wind speed in specified ranges.

Wind Direction in tens of degree	WIND SPEED (KNOTS)												
	0	1 TO 5	6 TO 10	11 TO 15	16 TO 20	21 TO 25	26 TO 30	31 TO 35	36 TO 40	41 TO 45	46 TO 50	> 50	TOTAL
Calm	0.2												0.2
Variable													
35-36-01		0.2											0.2
02-03-04		0.2											0.2
05-06-07			0.4										0.4
08-09-10		0.6	4.4	1.6									6.6
11-12-13		0.2	1.4										1.6
14-15-16													
17-18-19													
20-21-22													
23-24-25													
26-27-28													
29-30-31													
32-33-34													
TOTAL	0.2	1.2	6.2	1.6									9.2

MONTH : JANUARY

TIME : 15 UTC

MODEL : D

TABLE: Mean number of occurrences of concurrent wind direction (in 30 degree sector) and wind speed in specified ranges.

Wind Direction in tens of degree	WIND SPEED (KNOTS)												
	0	1 TO 5	6 TO 10	11 TO 15	16 TO 20	21 TO 25	26 TO 30	31 TO 35	36 TO 40	41 TO 45	46 TO 50	> 50	TOTAL
Calm													
Variable													
35-36-01													
02-03-04													
05-06-07													
08-09-10													
11-12-13													
14-15-16													
17-18-19													
20-21-22													
23-24-25													
26-27-28													
29-30-31													
32-33-34													
TOTAL													0

MONTH : JANUARY

TIME : 18 UTC

MODEL : D

TABLE: Mean number of occurrences of concurrent wind direction (in 30 degree sector) and wind speed in specified ranges.

Wind Direction in tens of degree	WIND SPEED (KNOTS)												
	0	1 TO 5	6 TO 10	11 TO 15	16 TO 20	21 TO 25	26 TO 30	31 TO 35	36 TO 40	41 TO 45	46 TO 50	> 50	TOTAL
Calm													
Variable													
35-36-01													
02-03-04													
05-06-07													
08-09-10													
11-12-13													
14-15-16													
17-18-19													
20-21-22													
23-24-25													
26-27-28													
29-30-31													
32-33-34													
TOTAL													0

MONTH : JANUARY

TIME : 21 UTC

MODEL : D

TABLE: Mean number of occurrences of concurrent wind direction (in 30 degree sector) and wind speed in specified ranges.

Wind Direction in tens of degree	WIND SPEED (KNOTS)												
	0	1 TO 5	6 TO 10	11 TO 15	16 TO 20	21 TO 25	26 TO 30	31 TO 35	36 TO 40	41 TO 45	46 TO 50	> 50	TOTAL
Calm													
Variable													
35-36-01													
02-03-04													
05-06-07													
08-09-10													
11-12-13													
14-15-16													
17-18-19													
20-21-22													
23-24-25													
26-27-28													
29-30-31													
32-33-34													
TOTAL													0

MONTH : FEBRUARY

TIME : 0 UTC

MODEL : D

TABLE: Mean number of occurrences of concurrent wind direction (in 30 degree sector) and wind speed in specified ranges.

Wind Direction in tens of degree	WIND SPEED (KNOTS)												
	0	1 TO 5	6 TO 10	11 TO 15	16 TO 20	21 TO 25	26 TO 30	31 TO 35	36 TO 40	41 TO 45	46 TO 50	> 50	TOTAL
Calm													
Variable													
35-36-01													
02-03-04													
05-06-07													
08-09-10													
11-12-13													
14-15-16													
17-18-19													
20-21-22													
23-24-25													
26-27-28													
29-30-31													
32-33-34													
TOTAL													0

MONTH : FEBRUARY

TIME : 3 UTC

MODEL : D

TABLE: Mean number of occurrences of concurrent wind direction (in 30 degree sector) and wind speed in specified ranges.

Wind Direction in tens of degree	WIND SPEED (KNOTS)												
	0	1 TO 5	6 TO 10	11 TO 15	16 TO 20	21 TO 25	26 TO 30	31 TO 35	36 TO 40	41 TO 45	46 TO 50	> 50	TOTAL
Calm	11.4												11.4
Variable													
35-36-01		0.4											0.4
02-03-04		0.2											0.2
05-06-07		2.0											2.0
08-09-10		3.8	1.8										5.6
11-12-13			0.6										0.6
14-15-16		0.4	0.2										0.6
17-18-19													
20-21-22		0.2											0.2
23-24-25													
26-27-28													
29-30-31													
32-33-34													
TOTAL	11.4	7.0	2.6										21.0

MONTH : FEBRUARY

TIME : 6 UTC

MODEL : D

TABLE: Mean number of occurrences of concurrent wind direction (in 30 degree sector) and wind speed in specified ranges.

Wind Direction in tens of degree	WIND SPEED (KNOTS)												
	0	1 TO 5	6 TO 10	11 TO 15	16 TO 20	21 TO 25	26 TO 30	31 TO 35	36 TO 40	41 TO 45	46 TO 50	> 50	TOTAL
Calm	1.2												1.2
Variable													
35-36-01		0.2	0.4										0.6
02-03-04		0.4	0.2										0.6
05-06-07		0.6	1.0	0.2									1.8
08-09-10		3.2	4.2	2.8									10.2
11-12-13		1.4	2.2	0.6	0.4								4.6
14-15-16		0.4	0.8										1.2
17-18-19													
20-21-22		0.4											0.4
23-24-25													
26-27-28		0.4	0.2										0.6
29-30-31		0.6											0.6
32-33-34													
TOTAL	1.2	7.6	9.0	3.6	0.4								21.8

MONTH : FEBRUARY

TIME : 9 UTC

MODEL : D

TABLE: Mean number of occurrences of concurrent wind direction (in 30 degree sector) and wind speed in specified ranges.

Wind Direction in tens of degree	WIND SPEED (KNOTS)												
	0	1 TO 5	6 TO 10	11 TO 15	16 TO 20	21 TO 25	26 TO 30	31 TO 35	36 TO 40	41 TO 45	46 TO 50	> 50	TOTAL
Calm	1.0												1.0
Variable													
35-36-01		0.8	0.4										1.2
02-03-04		0.6	0.4	0.2									1.2
05-06-07		0.8	2.0	0.2									3.0
08-09-10		1.4	5.4	4.4									11.2
11-12-13		0.2	2.0	2.0	0.4								4.6
14-15-16		0.2	1.0	0.2									1.4
17-18-19													
20-21-22													
23-24-25													
26-27-28													
29-30-31		0.2											0.2
32-33-34			0.2	0.2									0.4
TOTAL	1.0	4.2	11.4	7.2	0.4								24.2

MONTH : FEBRUARY

TIME : 12 UTC

MODEL : D

TABLE: Mean number of occurrences of concurrent wind direction (in 30 degree sector) and wind speed in specified ranges.

Wind Direction in tens of degree	WIND SPEED (KNOTS)												
	0	1 TO 5	6 TO 10	11 TO 15	16 TO 20	21 TO 25	26 TO 30	31 TO 35	36 TO 40	41 TO 45	46 TO 50	> 50	TOTAL
Calm	0.2												0.2
Variable													
35-36-01													
02-03-04			0.2										0.2
05-06-07			0.6	0.2									0.8
08-09-10			2.0	4.4	0.4								6.8
11-12-13		0.2	0.2	0.2									0.6
14-15-16													
17-18-19													
20-21-22													
23-24-25													
26-27-28													
29-30-31		0.2											0.2
32-33-34													
TOTAL	0.2	0.4	3.0	4.8	0.4								8.8

MONTH : FEBRUARY

TIME : 15 UTC

MODEL : D

TABLE: Mean number of occurrences of concurrent wind direction (in 30 degree sector) and wind speed in specified ranges.

Wind Direction in tens of degree	WIND SPEED (KNOTS)												
	0	1 TO 5	6 TO 10	11 TO 15	16 TO 20	21 TO 25	26 TO 30	31 TO 35	36 TO 40	41 TO 45	46 TO 50	> 50	TOTAL
Calm													
Variable													
35-36-01													
02-03-04													
05-06-07													
08-09-10													
11-12-13													
14-15-16													
17-18-19													
20-21-22													
23-24-25													
26-27-28													
29-30-31													
32-33-34													
TOTAL													0

MONTH : FEBRUARY

TIME : 18 UTC

MODEL : D

TABLE: Mean number of occurrences of concurrent wind direction (in 30 degree sector) and wind speed in specified ranges.

Wind Direction in tens of degree	WIND SPEED (KNOTS)												
	0	1 TO 5	6 TO 10	11 TO 15	16 TO 20	21 TO 25	26 TO 30	31 TO 35	36 TO 40	41 TO 45	46 TO 50	> 50	TOTAL
Calm													
Variable													
35-36-01													
02-03-04													
05-06-07													
08-09-10													
11-12-13													
14-15-16													
17-18-19													
20-21-22													
23-24-25													
26-27-28													
29-30-31													
32-33-34													
TOTAL													0

MONTH : FEBRUARY

TIME : 21 UTC

MODEL : D

TABLE: Mean number of occurrences of concurrent wind direction (in 30 degree sector) and wind speed in specified ranges.

Wind Direction in tens of degree	WIND SPEED (KNOTS)												
	0	1 TO 5	6 TO 10	11 TO 15	16 TO 20	21 TO 25	26 TO 30	31 TO 35	36 TO 40	41 TO 45	46 TO 50	> 50	TOTAL
Calm													
Variable													
35-36-01													
02-03-04													
05-06-07													
08-09-10													
11-12-13													
14-15-16													
17-18-19													
20-21-22													
23-24-25													
26-27-28													
29-30-31													
32-33-34													
TOTAL													0

MONTH : MARCH

TIME : 0 UTC

MODEL : D

TABLE: Mean number of occurrences of concurrent wind direction (in 30 degree sector) and wind speed in specified ranges.

Wind Direction in tens of degree	WIND SPEED (KNOTS)												
	0	1 TO 5	6 TO 10	11 TO 15	16 TO 20	21 TO 25	26 TO 30	31 TO 35	36 TO 40	41 TO 45	46 TO 50	> 50	TOTAL
Calm													
Variable													
35-36-01													
02-03-04													
05-06-07													
08-09-10													
11-12-13													
14-15-16													
17-18-19													
20-21-22													
23-24-25													
26-27-28													
29-30-31													
32-33-34													
TOTAL													0

MONTH : MARCH

TIME : 3 UTC

MODEL : D

TABLE: Mean number of occurrences of concurrent wind direction (in 30 degree sector) and wind speed in specified ranges.

Wind Direction in tens of degree	WIND SPEED (KNOTS)												
	0	1 TO 5	6 TO 10	11 TO 15	16 TO 20	21 TO 25	26 TO 30	31 TO 35	36 TO 40	41 TO 45	46 TO 50	> 50	TOTAL
Calm	8.0												8.0
Variable													
35-36-01			0.2										0.2
02-03-04		0.2											0.2
05-06-07		0.2	0.4										0.6
08-09-10		4.8	2.8	0.2									7.8
11-12-13		1.4	1.0										2.4
14-15-16		1.0	0.4										1.4
17-18-19		0.2	0.4										0.6
20-21-22													
23-24-25													
26-27-28		0.4	0.4										0.8
29-30-31													
32-33-34		0.4											0.4
TOTAL	8.0	8.6	5.6	0.2									22.4

MONTH : MARCH

TIME : 6 UTC

MODEL : D

TABLE: Mean number of occurrences of concurrent wind direction (in 30 degree sector) and wind speed in specified ranges.

Wind Direction in tens of degree	WIND SPEED (KNOTS)												
	0	1 TO 5	6 TO 10	11 TO 15	16 TO 20	21 TO 25	26 TO 30	31 TO 35	36 TO 40	41 TO 45	46 TO 50	> 50	TOTAL
Calm	2.2												2.2
Variable													
35-36-01		1.0	0.6										1.6
02-03-04		0.8	0.6										1.4
05-06-07		0.8	1.0	0.2									2.0
08-09-10		3.0	5.2	1.2	0.2								9.6
11-12-13		2.0	1.4	0.6	0.2								4.2
14-15-16		1.4	0.4										1.8
17-18-19		0.2											0.2
20-21-22			0.2										0.2
23-24-25		0.2											0.2
26-27-28			0.8										0.8
29-30-31			0.6										0.6
32-33-34		0.2	0.2	0.2									0.6
TOTAL	2.2	9.6	11.0	2.2	0.4								25.4

MONTH : MARCH

TIME : 9 UTC

MODEL : D

TABLE: Mean number of occurrences of concurrent wind direction (in 30 degree sector) and wind speed in specified ranges.

Wind Direction in tens of degree	WIND SPEED (KNOTS)												
	0	1 TO 5	6 TO 10	11 TO 15	16 TO 20	21 TO 25	26 TO 30	31 TO 35	36 TO 40	41 TO 45	46 TO 50	> 50	TOTAL
Calm	0.8												0.8
Variable													
35-36-01		0.2	0.8										1.0
02-03-04		1.0	0.4										1.4
05-06-07		0.4	1.4	1.0									2.8
08-09-10		1.6	3.2	4.6	0.6								10.0
11-12-13		1.2	1.6	0.4	0.4								3.6
14-15-16		0.2	0.4										0.6
17-18-19													
20-21-22													
23-24-25		0.2	0.2										0.4
26-27-28													
29-30-31			0.2										0.2
32-33-34			0.4		0.2								0.6
TOTAL	0.8	4.8	8.6	6.0	1.2								21.4

MONTH : MARCH

TIME : 12 UTC

MODEL : D

TABLE: Mean number of occurrences of concurrent wind direction (in 30 degree sector) and wind speed in specified ranges.

Wind Direction in tens of degree	WIND SPEED (KNOTS)												
	0	1 TO 5	6 TO 10	11 TO 15	16 TO 20	21 TO 25	26 TO 30	31 TO 35	36 TO 40	41 TO 45	46 TO 50	> 50	TOTAL
Calm	0.2												0.2
Variable													
35-36-01		0.4	0.2										0.6
02-03-04													
05-06-07		0.2	0.2	0.2									0.6
08-09-10		0.4	1.6	2.2	0.4								4.6
11-12-13			0.6	0.4	0.2								1.2
14-15-16													
17-18-19					0.2								0.2
20-21-22													
23-24-25													
26-27-28			0.2										0.2
29-30-31													
32-33-34													
TOTAL	0.2	1.0	2.8	2.8	0.8								7.6

MONTH : MARCH

TIME : 15 UTC

MODEL : D

TABLE: Mean number of occurrences of concurrent wind direction (in 30 degree sector) and wind speed in specified ranges.

Wind Direction in tens of degree	WIND SPEED (KNOTS)												
	0	1 TO 5	6 TO 10	11 TO 15	16 TO 20	21 TO 25	26 TO 30	31 TO 35	36 TO 40	41 TO 45	46 TO 50	> 50	TOTAL
Calm													
Variable													
35-36-01													
02-03-04													
05-06-07													
08-09-10													
11-12-13													
14-15-16													
17-18-19													
20-21-22													
23-24-25													
26-27-28													
29-30-31													
32-33-34													
TOTAL													0

MONTH : MARCH

TIME : 18 UTC

MODEL : D

TABLE: Mean number of occurrences of concurrent wind direction (in 30 degree sector) and wind speed in specified ranges.

Wind Direction in tens of degree	WIND SPEED (KNOTS)												
	0	1 TO 5	6 TO 10	11 TO 15	16 TO 20	21 TO 25	26 TO 30	31 TO 35	36 TO 40	41 TO 45	46 TO 50	> 50	TOTAL
Calm													
Variable													
35-36-01													
02-03-04													
05-06-07													
08-09-10													
11-12-13													
14-15-16													
17-18-19													
20-21-22													
23-24-25													
26-27-28													
29-30-31													
32-33-34													
TOTAL													0

MONTH : MARCH

TIME : 21 UTC

MODEL : D

TABLE: Mean number of occurrences of concurrent wind direction (in 30 degree sector) and wind speed in specified ranges.

Wind Direction in tens of degree	WIND SPEED (KNOTS)												
	0	1 TO 5	6 TO 10	11 TO 15	16 TO 20	21 TO 25	26 TO 30	31 TO 35	36 TO 40	41 TO 45	46 TO 50	> 50	TOTAL
Calm													
Variable													
35-36-01													
02-03-04													
05-06-07													
08-09-10													
11-12-13													
14-15-16													
17-18-19													
20-21-22													
23-24-25													
26-27-28													
29-30-31													
32-33-34													
TOTAL													0

MONTH : APRIL

TIME : 0 UTC

MODEL : D

TABLE: Mean number of occurrences of concurrent wind direction (in 30 degree sector) and wind speed in specified ranges.

Wind Direction in tens of degree	WIND SPEED (KNOTS)												
	0	1 TO 5	6 TO 10	11 TO 15	16 TO 20	21 TO 25	26 TO 30	31 TO 35	36 TO 40	41 TO 45	46 TO 50	> 50	TOTAL
Calm													
Variable													
35-36-01													
02-03-04													
05-06-07													
08-09-10													
11-12-13													
14-15-16													
17-18-19													
20-21-22													
23-24-25													
26-27-28													
29-30-31													
32-33-34													
TOTAL													0

MONTH : APRIL

TIME : 3 UTC

MODEL : D

TABLE: Mean number of occurrences of concurrent wind direction (in 30 degree sector) and wind speed in specified ranges.

Wind Direction in tens of degree	WIND SPEED (KNOTS)												
	0	1 TO 5	6 TO 10	11 TO 15	16 TO 20	21 TO 25	26 TO 30	31 TO 35	36 TO 40	41 TO 45	46 TO 50	> 50	TOTAL
Calm	3.8												3.8
Variable													
35-36-01		0.2											0.2
02-03-04													
05-06-07		0.6	0.2										0.8
08-09-10		3.0	3.6										6.6
11-12-13		1.4	2.0										3.4
14-15-16		2.2	2.6										4.8
17-18-19		0.2	0.2										0.4
20-21-22													
23-24-25													
26-27-28		0.2	0.6	0.6									1.4
29-30-31		0.4											0.4
32-33-34		0.2	0.2										0.4
TOTAL	3.8	8.4	9.4	0.6									22.2

MONTH : APRIL

TIME : 6 UTC

MODEL : D

TABLE: Mean number of occurrences of concurrent wind direction (in 30 degree sector) and wind speed in specified ranges.

Wind Direction in tens of degree	WIND SPEED (KNOTS)												
	0	1 TO 5	6 TO 10	11 TO 15	16 TO 20	21 TO 25	26 TO 30	31 TO 35	36 TO 40	41 TO 45	46 TO 50	> 50	TOTAL
Calm	2.2												2.2
Variable													
35-36-01		0.8	0.2										1.0
02-03-04			0.2										0.2
05-06-07		0.6	1.6										2.2
08-09-10		3.4	1.2										4.6
11-12-13		1.6	1.8	0.2									3.6
14-15-16		2.2	1.0										3.2
17-18-19		0.4	0.2										0.6
20-21-22			0.2										0.2
23-24-25			0.4										0.4
26-27-28		0.2	1.0										1.2
29-30-31		0.2	0.6	0.4									1.2
32-33-34		0.2	0.6										0.8
TOTAL	2.2	9.6	9.0	0.6									21.4

MONTH : APRIL

TIME : 9 UTC

MODEL : D

TABLE: Mean number of occurrences of concurrent wind direction (in 30 degree sector) and wind speed in specified ranges.

Wind Direction in tens of degree	WIND SPEED (KNOTS)												
	0	1 TO 5	6 TO 10	11 TO 15	16 TO 20	21 TO 25	26 TO 30	31 TO 35	36 TO 40	41 TO 45	46 TO 50	> 50	TOTAL
Calm	1.4												1.4
Variable													
35-36-01		0.8	2.0										2.8
02-03-04		0.8	0.2										1.0
05-06-07		0.6	0.4										1.0
08-09-10		2.2	2.6	0.6									5.4
11-12-13		1.4	1.6	0.4									3.4
14-15-16		0.8	0.6										1.4
17-18-19		0.2											0.2
20-21-22													
23-24-25													
26-27-28													
29-30-31		0.6											0.6
32-33-34			0.6										0.6
TOTAL	1.4	7.4	8.0	1.0									17.8

MONTH : APRIL

TIME : 12 UTC

MODEL : D

TABLE: Mean number of occurrences of concurrent wind direction (in 30 degree sector) and wind speed in specified ranges.

Wind Direction in tens of degree	WIND SPEED (KNOTS)												
	0	1 TO 5	6 TO 10	11 TO 15	16 TO 20	21 TO 25	26 TO 30	31 TO 35	36 TO 40	41 TO 45	46 TO 50	> 50	TOTAL
Calm													
Variable													
35-36-01		0.2				0.2							0.4
02-03-04													
05-06-07			0.4	0.2									0.6
08-09-10		0.8	0.8	0.4									2.0
11-12-13			0.4										0.4
14-15-16			0.2										0.2
17-18-19													
20-21-22													
23-24-25													
26-27-28													
29-30-31													
32-33-34													
TOTAL		1.0	1.8	0.6		0.2							3.6

MONTH : APRIL

TIME : 15 UTC

MODEL : D

TABLE: Mean number of occurrences of concurrent wind direction (in 30 degree sector) and wind speed in specified ranges.

Wind Direction in tens of degree	WIND SPEED (KNOTS)												
	0	1 TO 5	6 TO 10	11 TO 15	16 TO 20	21 TO 25	26 TO 30	31 TO 35	36 TO 40	41 TO 45	46 TO 50	> 50	TOTAL
Calm													
Variable													
35-36-01													
02-03-04													
05-06-07													
08-09-10													
11-12-13													
14-15-16													
17-18-19													
20-21-22													
23-24-25													
26-27-28													
29-30-31													
32-33-34													
TOTAL													0

MONTH : APRIL

TIME : 18 UTC

MODEL : D

TABLE: Mean number of occurrences of concurrent wind direction (in 30 degree sector) and wind speed in specified ranges.

Wind Direction in tens of degree	WIND SPEED (KNOTS)												
	0	1 TO 5	6 TO 10	11 TO 15	16 TO 20	21 TO 25	26 TO 30	31 TO 35	36 TO 40	41 TO 45	46 TO 50	> 50	TOTAL
Calm													
Variable													
35-36-01													
02-03-04													
05-06-07													
08-09-10													
11-12-13													
14-15-16													
17-18-19													
20-21-22													
23-24-25													
26-27-28													
29-30-31													
32-33-34													
TOTAL													0

MONTH : APRIL

TIME : 21 UTC

MODEL : D

TABLE: Mean number of occurrences of concurrent wind direction (in 30 degree sector) and wind speed in specified ranges.

Wind Direction in tens of degree	WIND SPEED (KNOTS)												
	0	1 TO 5	6 TO 10	11 TO 15	16 TO 20	21 TO 25	26 TO 30	31 TO 35	36 TO 40	41 TO 45	46 TO 50	> 50	TOTAL
Calm													
Variable													
35-36-01													
02-03-04													
05-06-07													
08-09-10													
11-12-13													
14-15-16													
17-18-19													
20-21-22													
23-24-25													
26-27-28													
29-30-31													
32-33-34													
TOTAL													0

MONTH : MAY

TIME : 0 UTC

MODEL : D

TABLE: Mean number of occurrences of concurrent wind direction (in 30 degree sector) and wind speed in specified ranges.

Wind Direction in tens of degree	WIND SPEED (KNOTS)												
	0	1 TO 5	6 TO 10	11 TO 15	16 TO 20	21 TO 25	26 TO 30	31 TO 35	36 TO 40	41 TO 45	46 TO 50	> 50	TOTAL
Calm													
Variable													
35-36-01													
02-03-04													
05-06-07													
08-09-10													
11-12-13													
14-15-16													
17-18-19													
20-21-22													
23-24-25													
26-27-28													
29-30-31													
32-33-34													
TOTAL													0

MONTH : MAY

TIME : 3 UTC

MODEL : D

TABLE: Mean number of occurrences of concurrent wind direction (in 30 degree sector) and wind speed in specified ranges.

Wind Direction in tens of degree	WIND SPEED (KNOTS)												
	0	1 TO 5	6 TO 10	11 TO 15	16 TO 20	21 TO 25	26 TO 30	31 TO 35	36 TO 40	41 TO 45	46 TO 50	> 50	TOTAL
Calm	2.4												2.4
Variable													
35-36-01													
02-03-04													
05-06-07		0.2											0.2
08-09-10		1.6	1.4										3.0
11-12-13		1.0	0.4										1.4
14-15-16		1.0	1.6										2.6
17-18-19		0.2											0.2
20-21-22			0.6										0.6
23-24-25			0.2	0.4	0.2								0.8
26-27-28		0.8	3.2	2.6	1.8								8.4
29-30-31		0.4	1.2	0.6	0.2								2.4
32-33-34			0.2										0.2
TOTAL	2.4	5.2	8.8	3.6	2.2								22.2

MONTH : MAY

TIME : 6 UTC

MODEL : D

TABLE: Mean number of occurrences of concurrent wind direction (in 30 degree sector) and wind speed in specified ranges.

Wind Direction in tens of degree	WIND SPEED (KNOTS)												
	0	1 TO 5	6 TO 10	11 TO 15	16 TO 20	21 TO 25	26 TO 30	31 TO 35	36 TO 40	41 TO 45	46 TO 50	> 50	TOTAL
Calm	1.2												1.2
Variable													
35-36-01		0.4	0.4										0.8
02-03-04													
05-06-07			0.2										0.2
08-09-10		1.4	1.4										2.8
11-12-13		0.6	1.0										1.6
14-15-16		0.4	1.8										2.2
17-18-19													
20-21-22			0.2										0.2
23-24-25		0.2	0.6	0.2	0.6								1.6
26-27-28		0.8	2.0	1.2	1.8								5.8
29-30-31		0.2	1.8	1.4	0.4								3.8
32-33-34		0.6	0.6	0.2									1.4
TOTAL	1.2	4.6	10.0	3.0	2.8								21.6

MONTH : MAY

TIME : 9 UTC

MODEL : D

TABLE: Mean number of occurrences of concurrent wind direction (in 30 degree sector) and wind speed in specified ranges.

Wind Direction in tens of degree	WIND SPEED (KNOTS)												
	0	1 TO 5	6 TO 10	11 TO 15	16 TO 20	21 TO 25	26 TO 30	31 TO 35	36 TO 40	41 TO 45	46 TO 50	> 50	TOTAL
Calm	1.4												1.4
Variable													
35-36-01		0.2	0.8										1.0
02-03-04		0.2	0.8										1.0
05-06-07		0.2	0.6	0.4									1.2
08-09-10		2.8	0.6	0.2									3.6
11-12-13		0.2	0.6		0.2								1.0
14-15-16		0.2	0.4										0.6
17-18-19													
20-21-22		0.4											0.4
23-24-25		0.4	0.2										0.6
26-27-28		0.2	1.2	0.8	0.4	0.2							2.8
29-30-31		0.8	1.0	1.0	0.2								3.0
32-33-34		0.4	2.0	0.2									2.6
TOTAL	1.4	6.0	8.2	2.6	0.8	0.2							19.2

MONTH : MAY

TIME : 12 UTC

MODEL : D

TABLE: Mean number of occurrences of concurrent wind direction (in 30 degree sector) and wind speed in specified ranges.

Wind Direction in tens of degree	WIND SPEED (KNOTS)												
	0	1 TO 5	6 TO 10	11 TO 15	16 TO 20	21 TO 25	26 TO 30	31 TO 35	36 TO 40	41 TO 45	46 TO 50	> 50	TOTAL
Calm	0.2												0.2
Variable													
35-36-01		0.4	0.2	0.2									0.8
02-03-04		0.2											0.2
05-06-07		0.4		0.4		0.2							1.0
08-09-10		0.8	0.8	0.2									1.8
11-12-13			0.2										0.2
14-15-16													
17-18-19													
20-21-22													
23-24-25		0.4	0.2	0.2									0.8
26-27-28			0.2	0.4									0.6
29-30-31		0.2	0.2										0.4
32-33-34		0.6	0.8	0.2									1.6
TOTAL	0.2	3.0	2.6	1.6		0.2							7.6

MONTH : MAY

TIME : 15 UTC

MODEL : D

TABLE: Mean number of occurrences of concurrent wind direction (in 30 degree sector) and wind speed in specified ranges.

Wind Direction in tens of degree	WIND SPEED (KNOTS)												
	0	1 TO 5	6 TO 10	11 TO 15	16 TO 20	21 TO 25	26 TO 30	31 TO 35	36 TO 40	41 TO 45	46 TO 50	> 50	TOTAL
Calm													
Variable													
35-36-01													
02-03-04													
05-06-07													
08-09-10													
11-12-13													
14-15-16													
17-18-19													
20-21-22													
23-24-25													
26-27-28													
29-30-31													
32-33-34													
TOTAL													0

MONTH : MAY

TIME : 18 UTC

MODEL : D

TABLE: Mean number of occurrences of concurrent wind direction (in 30 degree sector) and wind speed in specified ranges.

Wind Direction in tens of degree	WIND SPEED (KNOTS)												
	0	1 TO 5	6 TO 10	11 TO 15	16 TO 20	21 TO 25	26 TO 30	31 TO 35	36 TO 40	41 TO 45	46 TO 50	> 50	TOTAL
Calm													
Variable													
35-36-01													
02-03-04													
05-06-07													
08-09-10													
11-12-13													
14-15-16													
17-18-19													
20-21-22													
23-24-25													
26-27-28													
29-30-31													
32-33-34													
TOTAL													0

MONTH : MAY

TIME : 21 UTC

MODEL : D

TABLE: Mean number of occurrences of concurrent wind direction (in 30 degree sector) and wind speed in specified ranges.

Wind Direction in tens of degree	WIND SPEED (KNOTS)												
	0	1 TO 5	6 TO 10	11 TO 15	16 TO 20	21 TO 25	26 TO 30	31 TO 35	36 TO 40	41 TO 45	46 TO 50	> 50	TOTAL
Calm													
Variable													
35-36-01													
02-03-04													
05-06-07													
08-09-10													
11-12-13													
14-15-16													
17-18-19													
20-21-22													
23-24-25													
26-27-28													
29-30-31													
32-33-34													
TOTAL													0

MONTH : JUNE

TIME : 0 UTC

MODEL : D

TABLE: Mean number of occurrences of concurrent wind direction (in 30 degree sector) and wind speed in specified ranges.

Wind Direction in tens of degree	WIND SPEED (KNOTS)												
	0	1 TO 5	6 TO 10	11 TO 15	16 TO 20	21 TO 25	26 TO 30	31 TO 35	36 TO 40	41 TO 45	46 TO 50	> 50	TOTAL
Calm													
Variable													
35-36-01													
02-03-04													
05-06-07													
08-09-10													
11-12-13													
14-15-16													
17-18-19													
20-21-22													
23-24-25													
26-27-28													
29-30-31													
32-33-34													
TOTAL													0

MONTH : JUNE

TIME : 3 UTC

MODEL : D

TABLE: Mean number of occurrences of concurrent wind direction (in 30 degree sector) and wind speed in specified ranges.

Wind Direction in tens of degree	WIND SPEED (KNOTS)												
	0	1 TO 5	6 TO 10	11 TO 15	16 TO 20	21 TO 25	26 TO 30	31 TO 35	36 TO 40	41 TO 45	46 TO 50	> 50	TOTAL
Calm	1.0												1.0
Variable													
35-36-01		0.2											0.2
02-03-04													
05-06-07													
08-09-10		0.4											0.4
11-12-13													
14-15-16													
17-18-19													
20-21-22			0.2										0.2
23-24-25		0.4	3.2	1.2	0.8								5.6
26-27-28		2.4	6.8	5.4	4.0								18.6
29-30-31		0.4	1.4	0.8	0.2								2.8
32-33-34		0.2											0.2
TOTAL	1.0	4.0	11.6	7.4	5.0								29.0

MONTH : JUNE

TIME : 6 UTC

MODEL : D

TABLE: Mean number of occurrences of concurrent wind direction (in 30 degree sector) and wind speed in specified ranges.

Wind Direction in tens of degree	WIND SPEED (KNOTS)												
	0	1 TO 5	6 TO 10	11 TO 15	16 TO 20	21 TO 25	26 TO 30	31 TO 35	36 TO 40	41 TO 45	46 TO 50	> 50	TOTAL
Calm	0.4												0.4
Variable													
35-36-01		0.2											0.2
02-03-04													
05-06-07													
08-09-10		0.2											0.2
11-12-13		0.2											0.2
14-15-16													
17-18-19													
20-21-22													
23-24-25		0.4	1.6	2.6	2.4								7.0
26-27-28		0.4	4.6	3.8	4.6	0.6							14.0
29-30-31		0.2	1.8	1.4	0.4	0.2							4.0
32-33-34			0.8	0.2									1.0
TOTAL	0.4	1.6	8.8	8.0	7.4	0.8							27.0

MONTH : JUNE

TIME : 9 UTC

MODEL : D

TABLE: Mean number of occurrences of concurrent wind direction (in 30 degree sector) and wind speed in specified ranges.

Wind Direction in tens of degree	WIND SPEED (KNOTS)												
	0	1 TO 5	6 TO 10	11 TO 15	16 TO 20	21 TO 25	26 TO 30	31 TO 35	36 TO 40	41 TO 45	46 TO 50	> 50	TOTAL
Calm	0.2												0.2
Variable													
35-36-01		0.2	0.4										0.6
02-03-04		0.4											0.4
05-06-07		0.2											0.2
08-09-10													
11-12-13			0.2										0.2
14-15-16													
17-18-19													
20-21-22		0.4	0.2	0.2	0.2								1.0
23-24-25			1.0	1.8	1.4								4.2
26-27-28		0.8	1.4	2.4	2.8	0.4	0.2						8.0
29-30-31		0.6	3.2	2.2	0.2								6.2
32-33-34			1.0	0.4									1.4
TOTAL	0.2	2.6	7.4	7.0	4.6	0.4	0.2						22.4

MONTH : JUNE

TIME : 12 UTC

MODEL : D

TABLE: Mean number of occurrences of concurrent wind direction (in 30 degree sector) and wind speed in specified ranges.

Wind Direction in tens of degree	WIND SPEED (KNOTS)												
	0	1 TO 5	6 TO 10	11 TO 15	16 TO 20	21 TO 25	26 TO 30	31 TO 35	36 TO 40	41 TO 45	46 TO 50	> 50	TOTAL
Calm													
Variable													
35-36-01				0.2									0.2
02-03-04													
05-06-07													
08-09-10													
11-12-13													
14-15-16		0.2											0.2
17-18-19													
20-21-22							0.2						0.2
23-24-25					0.4	0.2							0.6
26-27-28			0.4	0.8	1.0								2.2
29-30-31													
32-33-34		0.2	0.4										0.6
TOTAL		0.4	0.8	1.0	1.4	0.2	0.2						4.0

MONTH : JUNE

TIME : 15 UTC

MODEL : D

TABLE: Mean number of occurrences of concurrent wind direction (in 30 degree sector) and wind speed in specified ranges.

Wind Direction in tens of degree	WIND SPEED (KNOTS)												
	0	1 TO 5	6 TO 10	11 TO 15	16 TO 20	21 TO 25	26 TO 30	31 TO 35	36 TO 40	41 TO 45	46 TO 50	> 50	TOTAL
Calm													
Variable													
35-36-01													
02-03-04													
05-06-07													
08-09-10													
11-12-13													
14-15-16													
17-18-19													
20-21-22													
23-24-25													
26-27-28													
29-30-31													
32-33-34													
TOTAL													0

MONTH : JUNE

TIME : 18 UTC

MODEL : D

TABLE: Mean number of occurrences of concurrent wind direction (in 30 degree sector) and wind speed in specified ranges.

Wind Direction in tens of degree	WIND SPEED (KNOTS)												
	0	1 TO 5	6 TO 10	11 TO 15	16 TO 20	21 TO 25	26 TO 30	31 TO 35	36 TO 40	41 TO 45	46 TO 50	> 50	TOTAL
Calm													
Variable													
35-36-01													
02-03-04													
05-06-07													
08-09-10													
11-12-13													
14-15-16													
17-18-19													
20-21-22													
23-24-25													
26-27-28													
29-30-31													
32-33-34													
TOTAL													0

MONTH : JUNE

TIME : 21 UTC

MODEL : D

TABLE: Mean number of occurrences of concurrent wind direction (in 30 degree sector) and wind speed in specified ranges.

Wind Direction in tens of degree	WIND SPEED (KNOTS)												
	0	1 TO 5	6 TO 10	11 TO 15	16 TO 20	21 TO 25	26 TO 30	31 TO 35	36 TO 40	41 TO 45	46 TO 50	> 50	TOTAL
Calm													
Variable													
35-36-01													
02-03-04													
05-06-07													
08-09-10													
11-12-13													
14-15-16													
17-18-19													
20-21-22													
23-24-25													
26-27-28													
29-30-31													
32-33-34													
TOTAL													0

MONTH : JULY

TIME : 0 UTC

MODEL : D

TABLE: Mean number of occurrences of concurrent wind direction (in 30 degree sector) and wind speed in specified ranges.

Wind Direction in tens of degree	WIND SPEED (KNOTS)												
	0	1 TO 5	6 TO 10	11 TO 15	16 TO 20	21 TO 25	26 TO 30	31 TO 35	36 TO 40	41 TO 45	46 TO 50	> 50	TOTAL
Calm													
Variable													
35-36-01													
02-03-04													
05-06-07													
08-09-10													
11-12-13													
14-15-16													
17-18-19													
20-21-22													
23-24-25													
26-27-28													
29-30-31													
32-33-34													
TOTAL													0

MONTH : JULY

TIME : 3 UTC

MODEL : D

TABLE: Mean number of occurrences of concurrent wind direction (in 30 degree sector) and wind speed in specified ranges.

Wind Direction in tens of degree	WIND SPEED (KNOTS)												
	0	1 TO 5	6 TO 10	11 TO 15	16 TO 20	21 TO 25	26 TO 30	31 TO 35	36 TO 40	41 TO 45	46 TO 50	> 50	TOTAL
Calm	2.2												2.2
Variable													
35-36-01		0.4											0.4
02-03-04													
05-06-07													
08-09-10		0.8											0.8
11-12-13		0.2											0.2
14-15-16													
17-18-19		0.2											0.2
20-21-22			0.2		0.2								0.4
23-24-25		0.6	2.2	1.6	0.2								4.6
26-27-28		1.2	4.6	5.0	3.0	0.2							14.0
29-30-31		0.8	1.4	0.2	0.2								2.6
32-33-34		0.2	0.2										0.4
TOTAL	2.2	4.4	8.6	6.8	3.6	0.2							25.8

MONTH : JULY

TIME : 6 UTC

MODEL : D

TABLE: Mean number of occurrences of concurrent wind direction (in 30 degree sector) and wind speed in specified ranges.

Wind Direction in tens of degree	WIND SPEED (KNOTS)												
	0	1 TO 5	6 TO 10	11 TO 15	16 TO 20	21 TO 25	26 TO 30	31 TO 35	36 TO 40	41 TO 45	46 TO 50	> 50	TOTAL
Calm	0.2												0.2
Variable													
35-36-01		0.2											0.2
02-03-04													
05-06-07													
08-09-10		0.2											0.2
11-12-13		0.4											0.4
14-15-16													
17-18-19													
20-21-22													
23-24-25		1.0	2.4	1.8	1.2	0.4							6.8
26-27-28		0.4	3.8	4.2	4.6	3.6							16.6
29-30-31		0.4	1.2	1.6	0.8	0.2							4.2
32-33-34		0.2	0.6	0.2									1.0
TOTAL	0.2	2.8	8.0	7.8	6.6	4.2							29.6

MONTH : JULY

TIME : 9 UTC

MODEL : D

TABLE: Mean number of occurrences of concurrent wind direction (in 30 degree sector) and wind speed in specified ranges.

Wind Direction in tens of degree	WIND SPEED (KNOTS)												
	0	1 TO 5	6 TO 10	11 TO 15	16 TO 20	21 TO 25	26 TO 30	31 TO 35	36 TO 40	41 TO 45	46 TO 50	> 50	TOTAL
Calm	0.8												0.8
Variable													
35-36-01		0.4	0.2										0.6
02-03-04													
05-06-07													
08-09-10													
11-12-13													
14-15-16			0.2										0.2
17-18-19		0.2											0.2
20-21-22					0.2								0.2
23-24-25		0.8	2.2	1.4	1.4								5.8
26-27-28		0.2	2.4	3.2	4.2	3.0		0.2					13.2
29-30-31			1.8	1.6	1.4	1.0	0.2						6.0
32-33-34		0.6	1.0	0.2									1.8
TOTAL	0.8	2.2	7.8	6.4	7.2	4.0	0.2	0.2					28.8

MONTH : JULY

TIME : 12 UTC

MODEL : D

TABLE: Mean number of occurrences of concurrent wind direction (in 30 degree sector) and wind speed in specified ranges.

Wind Direction in tens of degree	WIND SPEED (KNOTS)												
	0	1 TO 5	6 TO 10	11 TO 15	16 TO 20	21 TO 25	26 TO 30	31 TO 35	36 TO 40	41 TO 45	46 TO 50	> 50	TOTAL
Calm	0.6												0.6
Variable													
35-36-01													
02-03-04													
05-06-07													
08-09-10													
11-12-13													
14-15-16													
17-18-19		0.2											0.2
20-21-22													
23-24-25		1.2	1.4	0.6	0.4	0.2							3.8
26-27-28				0.8	0.4	0.2							1.4
29-30-31		0.2	0.2										0.4
32-33-34		0.4											0.4
TOTAL	0.6	2.0	1.6	1.4	0.8	0.4							6.8

MONTH : JULY

TIME : 15 UTC

MODEL : D

TABLE: Mean number of occurrences of concurrent wind direction (in 30 degree sector) and wind speed in specified ranges.

Wind Direction in tens of degree	WIND SPEED (KNOTS)												
	0	1 TO 5	6 TO 10	11 TO 15	16 TO 20	21 TO 25	26 TO 30	31 TO 35	36 TO 40	41 TO 45	46 TO 50	> 50	TOTAL
Calm													
Variable													
35-36-01													
02-03-04													
05-06-07													
08-09-10													
11-12-13													
14-15-16													
17-18-19													
20-21-22													
23-24-25													
26-27-28													
29-30-31													
32-33-34													
TOTAL													0

MONTH : JULY

TIME : 18 UTC

MODEL : D

TABLE: Mean number of occurrences of concurrent wind direction (in 30 degree sector) and wind speed in specified ranges.

Wind Direction in tens of degree	WIND SPEED (KNOTS)												
	0	1 TO 5	6 TO 10	11 TO 15	16 TO 20	21 TO 25	26 TO 30	31 TO 35	36 TO 40	41 TO 45	46 TO 50	> 50	TOTAL
Calm													
Variable													
35-36-01													
02-03-04													
05-06-07													
08-09-10													
11-12-13													
14-15-16													
17-18-19													
20-21-22													
23-24-25													
26-27-28													
29-30-31													
32-33-34													
TOTAL													0

MONTH : JULY

TIME : 21 UTC

MODEL : D

TABLE: Mean number of occurrences of concurrent wind direction (in 30 degree sector) and wind speed in specified ranges.

Wind Direction in tens of degree	WIND SPEED (KNOTS)												
	0	1 TO 5	6 TO 10	11 TO 15	16 TO 20	21 TO 25	26 TO 30	31 TO 35	36 TO 40	41 TO 45	46 TO 50	> 50	TOTAL
Calm													
Variable													
35-36-01													
02-03-04													
05-06-07													
08-09-10													
11-12-13													
14-15-16													
17-18-19													
20-21-22													
23-24-25													
26-27-28													
29-30-31													
32-33-34													
TOTAL													0

MONTH : AUGUST

TIME : 0 UTC

MODEL : D

TABLE: Mean number of occurrences of concurrent wind direction (in 30 degree sector) and wind speed in specified ranges.

Wind Direction in tens of degree	WIND SPEED (KNOTS)												
	0	1 TO 5	6 TO 10	11 TO 15	16 TO 20	21 TO 25	26 TO 30	31 TO 35	36 TO 40	41 TO 45	46 TO 50	> 50	TOTAL
Calm													
Variable													
35-36-01													
02-03-04													
05-06-07													
08-09-10													
11-12-13													
14-15-16													
17-18-19													
20-21-22													
23-24-25													
26-27-28													
29-30-31													
32-33-34													
TOTAL													0

MONTH : AUGUST

TIME : 3 UTC

MODEL : D

TABLE: Mean number of occurrences of concurrent wind direction (in 30 degree sector) and wind speed in specified ranges.

Wind Direction in tens of degree	WIND SPEED (KNOTS)												
	0	1 TO 5	6 TO 10	11 TO 15	16 TO 20	21 TO 25	26 TO 30	31 TO 35	36 TO 40	41 TO 45	46 TO 50	> 50	TOTAL
Calm	2.4												2.4
Variable													
35-36-01		0.2											0.2
02-03-04													
05-06-07		0.2											0.2
08-09-10		0.4	0.2										0.6
11-12-13													
14-15-16													
17-18-19													
20-21-22													
23-24-25		1.0	1.6	0.2									2.8
26-27-28		2.4	3.4	5.2	1.8								12.8
29-30-31		0.8	2.0	1.2	1.2								5.2
32-33-34		0.4	0.2	0.2									0.8
TOTAL	2.4	5.4	7.4	6.8	3.0								25.0

MONTH : AUGUST

TIME : 6 UTC

MODEL : D

TABLE: Mean number of occurrences of concurrent wind direction (in 30 degree sector) and wind speed in specified ranges.

Wind Direction in tens of degree	WIND SPEED (KNOTS)												
	0	1 TO 5	6 TO 10	11 TO 15	16 TO 20	21 TO 25	26 TO 30	31 TO 35	36 TO 40	41 TO 45	46 TO 50	> 50	TOTAL
Calm	0.4												0.4
Variable													
35-36-01		0.2	0.2										0.4
02-03-04													
05-06-07													
08-09-10													
11-12-13													
14-15-16													
17-18-19													
20-21-22				0.2									0.2
23-24-25		1.8	2.6	0.6	0.6	0.2							5.8
26-27-28		0.4	2.6	5.8	5.4	0.8	0.4						15.4
29-30-31		1.0	2.8	0.6	1.8	0.2	0.2						6.6
32-33-34		0.2		0.4	0.2								0.8
TOTAL	0.4	3.6	8.2	7.6	8.0	1.2	0.6						29.6

MONTH : AUGUST

TIME : 9 UTC

MODEL : D

TABLE: Mean number of occurrences of concurrent wind direction (in 30 degree sector) and wind speed in specified ranges.

Wind Direction in tens of degree	WIND SPEED (KNOTS)												
	0	1 TO 5	6 TO 10	11 TO 15	16 TO 20	21 TO 25	26 TO 30	31 TO 35	36 TO 40	41 TO 45	46 TO 50	> 50	TOTAL
Calm	0.6												0.6
Variable													
35-36-01		0.6		0.2									0.8
02-03-04													
05-06-07		0.4											0.4
08-09-10		0.2											0.2
11-12-13													
14-15-16													
17-18-19		0.2											0.2
20-21-22				0.2									0.2
23-24-25		3.0	1.4	1.6	0.2	0.2							6.4
26-27-28		0.4	1.6	5.0	3.8	1.4	0.6						12.8
29-30-31		1.2	1.6	1.4	1.0	0.8	0.4						6.4
32-33-34		0.4	0.8	0.2									1.4
TOTAL	0.6	6.4	5.4	8.6	5.0	2.4	1.0						29.4

MONTH : AUGUST

TIME : 12 UTC

MODEL : D

TABLE: Mean number of occurrences of concurrent wind direction (in 30 degree sector) and wind speed in specified ranges.

Wind Direction in tens of degree	WIND SPEED (KNOTS)												
	0	1 TO 5	6 TO 10	11 TO 15	16 TO 20	21 TO 25	26 TO 30	31 TO 35	36 TO 40	41 TO 45	46 TO 50	> 50	TOTAL
Calm	1.0												1.0
Variable													
35-36-01													
02-03-04		0.2											0.2
05-06-07													
08-09-10		0.6	0.4										1.0
11-12-13		0.2											0.2
14-15-16		0.4											0.4
17-18-19													
20-21-22		0.2		0.2									0.4
23-24-25		1.2	0.8	0.4									2.4
26-27-28		0.4	0.6	0.8	0.4	1.0							3.2
29-30-31		0.4	0.4	0.4									1.2
32-33-34		0.2	0.4	0.2									0.8
TOTAL	1.0	3.8	2.6	2.0	0.4	1.0							10.8

MONTH : AUGUST

TIME : 15 UTC

MODEL : D

TABLE: Mean number of occurrences of concurrent wind direction (in 30 degree sector) and wind speed in specified ranges.

Wind Direction in tens of degree	WIND SPEED (KNOTS)												
	0	1 TO 5	6 TO 10	11 TO 15	16 TO 20	21 TO 25	26 TO 30	31 TO 35	36 TO 40	41 TO 45	46 TO 50	> 50	TOTAL
Calm													
Variable													
35-36-01													
02-03-04													
05-06-07													
08-09-10													
11-12-13													
14-15-16													
17-18-19													
20-21-22													
23-24-25													
26-27-28													
29-30-31													
32-33-34													
TOTAL													0

MONTH : AUGUST

TIME : 18 UTC

MODEL : D

TABLE: Mean number of occurrences of concurrent wind direction (in 30 degree sector) and wind speed in specified ranges.

Wind Direction in tens of degree	WIND SPEED (KNOTS)												
	0	1 TO 5	6 TO 10	11 TO 15	16 TO 20	21 TO 25	26 TO 30	31 TO 35	36 TO 40	41 TO 45	46 TO 50	> 50	TOTAL
Calm													
Variable													
35-36-01													
02-03-04													
05-06-07													
08-09-10													
11-12-13													
14-15-16													
17-18-19													
20-21-22													
23-24-25													
26-27-28													
29-30-31													
32-33-34													
TOTAL													0

MONTH : AUGUST

TIME : 21 UTC

MODEL : D

TABLE: Mean number of occurrences of concurrent wind direction (in 30 degree sector) and wind speed in specified ranges.

Wind Direction in tens of degree	WIND SPEED (KNOTS)												
	0	1 TO 5	6 TO 10	11 TO 15	16 TO 20	21 TO 25	26 TO 30	31 TO 35	36 TO 40	41 TO 45	46 TO 50	> 50	TOTAL
Calm													
Variable													
35-36-01													
02-03-04													
05-06-07													
08-09-10													
11-12-13													
14-15-16													
17-18-19													
20-21-22													
23-24-25													
26-27-28													
29-30-31													
32-33-34													
TOTAL													0

MONTH : SEPTEMBER

TIME : 0 UTC

MODEL : D

TABLE: Mean number of occurrences of concurrent wind direction (in 30 degree sector) and wind speed in specified ranges.

Wind Direction in tens of degree	WIND SPEED (KNOTS)												
	0	1 TO 5	6 TO 10	11 TO 15	16 TO 20	21 TO 25	26 TO 30	31 TO 35	36 TO 40	41 TO 45	46 TO 50	> 50	TOTAL
Calm													
Variable													
35-36-01													
02-03-04													
05-06-07													
08-09-10													
11-12-13													
14-15-16													
17-18-19													
20-21-22													
23-24-25													
26-27-28													
29-30-31													
32-33-34													
TOTAL													0

MONTH : SEPTEMBER

TIME : 3 UTC

MODEL : D

TABLE: Mean number of occurrences of concurrent wind direction (in 30 degree sector) and wind speed in specified ranges.

Wind Direction in tens of degree	WIND SPEED (KNOTS)												
	0	1 TO 5	6 TO 10	11 TO 15	16 TO 20	21 TO 25	26 TO 30	31 TO 35	36 TO 40	41 TO 45	46 TO 50	> 50	TOTAL
Calm	4.8												4.8
Variable													
35-36-01		0.4											0.4
02-03-04		0.2											0.2
05-06-07			0.2										0.2
08-09-10		1.0	0.2										1.2
11-12-13		0.4	0.4										0.8
14-15-16		0.4											0.4
17-18-19													
20-21-22													
23-24-25		0.6	0.6	0.8									2.0
26-27-28		1.8	5.6	2.6	0.4								10.4
29-30-31		1.2	0.4	0.6	0.2								2.4
32-33-34		0.6	0.2										0.8
TOTAL	4.8	6.6	7.6	4.0	0.6								23.6

MONTH : SEPTEMBER

TIME : 6 UTC

MODEL : D

TABLE: Mean number of occurrences of concurrent wind direction (in 30 degree sector) and wind speed in specified ranges.

Wind Direction in tens of degree	WIND SPEED (KNOTS)												
	0	1 TO 5	6 TO 10	11 TO 15	16 TO 20	21 TO 25	26 TO 30	31 TO 35	36 TO 40	41 TO 45	46 TO 50	> 50	TOTAL
Calm	2.6												2.6
Variable													
35-36-01		1.0	0.2										1.2
02-03-04		0.4											0.4
05-06-07		0.8											0.8
08-09-10		1.8	1.2										3.0
11-12-13		0.4	0.2										0.6
14-15-16													
17-18-19													
20-21-22		0.2	0.2										0.4
23-24-25		0.2	0.8	1.4	0.2								2.6
26-27-28		0.2	1.8	5.4	2.6								10.0
29-30-31		1.4	2.2	1.4	1.0								6.0
32-33-34		0.4	0.6	0.2									1.2
TOTAL	2.6	6.8	7.2	8.4	3.8								28.8

MONTH : SEPTEMBER

TIME : 9 UTC

MODEL : D

TABLE: Mean number of occurrences of concurrent wind direction (in 30 degree sector) and wind speed in specified ranges.

Wind Direction in tens of degree	WIND SPEED (KNOTS)												
	0	1 TO 5	6 TO 10	11 TO 15	16 TO 20	21 TO 25	26 TO 30	31 TO 35	36 TO 40	41 TO 45	46 TO 50	> 50	TOTAL
Calm	2.2												2.2
Variable													
35-36-01		0.4	1.0										1.4
02-03-04		0.4	0.6										1.0
05-06-07		0.6	0.4										1.0
08-09-10		2.2	1.6										3.8
11-12-13		0.2	0.2	0.2									0.6
14-15-16													
17-18-19													
20-21-22		0.2	0.2										0.4
23-24-25		0.2	0.6	1.0									1.8
26-27-28		0.6	1.2	4.0	1.4	0.4							7.6
29-30-31		1.0	1.0	2.0	0.2	0.2							4.4
32-33-34		1.2	1.2	0.2									2.6
TOTAL	2.2	7.0	8.0	7.4	1.6	0.6							26.8

MONTH : SEPTEMBER

TIME : 12 UTC

MODEL : D

TABLE: Mean number of occurrences of concurrent wind direction (in 30 degree sector) and wind speed in specified ranges.

Wind Direction in tens of degree	WIND SPEED (KNOTS)												
	0	1 TO 5	6 TO 10	11 TO 15	16 TO 20	21 TO 25	26 TO 30	31 TO 35	36 TO 40	41 TO 45	46 TO 50	> 50	TOTAL
Calm	1.4												1.4
Variable													
35-36-01													
02-03-04		0.6											0.6
05-06-07		0.6	0.2										0.8
08-09-10		0.8	0.8										1.6
11-12-13													
14-15-16													
17-18-19													
20-21-22													
23-24-25		0.2		0.2	0.2								0.6
26-27-28			0.4	0.4	0.8								1.6
29-30-31			0.2	0.2									0.4
32-33-34													
TOTAL	1.4	2.2	1.6	0.8	1.0								7.0

MONTH : SEPTEMBER

TIME : 15 UTC

MODEL : D

TABLE: Mean number of occurrences of concurrent wind direction (in 30 degree sector) and wind speed in specified ranges.

Wind Direction in tens of degree	WIND SPEED (KNOTS)												
	0	1 TO 5	6 TO 10	11 TO 15	16 TO 20	21 TO 25	26 TO 30	31 TO 35	36 TO 40	41 TO 45	46 TO 50	> 50	TOTAL
Calm													
Variable													
35-36-01													
02-03-04													
05-06-07													
08-09-10													
11-12-13													
14-15-16													
17-18-19													
20-21-22													
23-24-25													
26-27-28													
29-30-31													
32-33-34													
TOTAL													0

MONTH : SEPTEMBER

TIME : 18 UTC

MODEL : D

TABLE: Mean number of occurrences of concurrent wind direction (in 30 degree sector) and wind speed in specified ranges.

Wind Direction in tens of degree	WIND SPEED (KNOTS)												
	0	1 TO 5	6 TO 10	11 TO 15	16 TO 20	21 TO 25	26 TO 30	31 TO 35	36 TO 40	41 TO 45	46 TO 50	> 50	TOTAL
Calm													
Variable													
35-36-01													
02-03-04													
05-06-07													
08-09-10													
11-12-13													
14-15-16													
17-18-19													
20-21-22													
23-24-25													
26-27-28													
29-30-31													
32-33-34													
TOTAL													0

MONTH : SEPTEMBER

TIME : 21 UTC

MODEL : D

TABLE: Mean number of occurrences of concurrent wind direction (in 30 degree sector) and wind speed in specified ranges.

Wind Direction in tens of degree	WIND SPEED (KNOTS)												
	0	1 TO 5	6 TO 10	11 TO 15	16 TO 20	21 TO 25	26 TO 30	31 TO 35	36 TO 40	41 TO 45	46 TO 50	> 50	TOTAL
Calm													
Variable													
35-36-01													
02-03-04													
05-06-07													
08-09-10													
11-12-13													
14-15-16													
17-18-19													
20-21-22													
23-24-25													
26-27-28													
29-30-31													
32-33-34													
TOTAL													0

MONTH : OCTOBER

TIME : 0 UTC

MODEL : D

TABLE: Mean number of occurrences of concurrent wind direction (in 30 degree sector) and wind speed in specified ranges.

Wind Direction in tens of degree	WIND SPEED (KNOTS)												
	0	1 TO 5	6 TO 10	11 TO 15	16 TO 20	21 TO 25	26 TO 30	31 TO 35	36 TO 40	41 TO 45	46 TO 50	> 50	TOTAL
Calm													
Variable													
35-36-01													
02-03-04													
05-06-07													
08-09-10													
11-12-13													
14-15-16													
17-18-19													
20-21-22													
23-24-25													
26-27-28													
29-30-31													
32-33-34													
TOTAL													0

MONTH : OCTOBER

TIME : 3 UTC

MODEL : D

TABLE: Mean number of occurrences of concurrent wind direction (in 30 degree sector) and wind speed in specified ranges.

Wind Direction in tens of degree	WIND SPEED (KNOTS)												
	0	1 TO 5	6 TO 10	11 TO 15	16 TO 20	21 TO 25	26 TO 30	31 TO 35	36 TO 40	41 TO 45	46 TO 50	> 50	TOTAL
Calm	11.4												11.4
Variable													
35-36-01		0.2											0.2
02-03-04		0.2											0.2
05-06-07		0.6											0.6
08-09-10		2.2	0.4										2.6
11-12-13		1.4	0.2	0.2									1.8
14-15-16		0.2											0.2
17-18-19													
20-21-22		0.2											0.2
23-24-25		0.2	0.2										0.4
26-27-28		1.6	1.4	0.6									3.6
29-30-31		0.6	0.6	0.2									1.4
32-33-34		1.4											1.4
TOTAL	11.4	8.8	2.8	1.0									24.0

MONTH : OCTOBER

TIME : 6 UTC

MODEL : D

TABLE: Mean number of occurrences of concurrent wind direction (in 30 degree sector) and wind speed in specified ranges.

Wind Direction in tens of degree	WIND SPEED (KNOTS)												
	0	1 TO 5	6 TO 10	11 TO 15	16 TO 20	21 TO 25	26 TO 30	31 TO 35	36 TO 40	41 TO 45	46 TO 50	> 50	TOTAL
Calm	7.0												7.0
Variable													
35-36-01		2.8											2.8
02-03-04		0.6	0.4										1.0
05-06-07		1.6	1.0										2.6
08-09-10		2.2	1.2	0.2									3.6
11-12-13		0.4	2.0	0.2									2.6
14-15-16		0.2	0.2										0.4
17-18-19													
20-21-22													
23-24-25		0.4	0.6	0.2									1.2
26-27-28		1.2	2.0	0.8	0.2								4.2
29-30-31		1.4	1.2	0.4									3.0
32-33-34		1.2											1.2
TOTAL	7.0	12.0	8.6	1.8	0.2								29.6

MONTH : OCTOBER

TIME : 9 UTC

MODEL : D

TABLE: Mean number of occurrences of concurrent wind direction (in 30 degree sector) and wind speed in specified ranges.

Wind Direction in tens of degree	WIND SPEED (KNOTS)												
	0	1 TO 5	6 TO 10	11 TO 15	16 TO 20	21 TO 25	26 TO 30	31 TO 35	36 TO 40	41 TO 45	46 TO 50	> 50	TOTAL
Calm	4.6												4.6
Variable													
35-36-01		1.6	1.0	0.2									2.8
02-03-04		1.6	0.2										1.8
05-06-07		0.4	1.0										1.4
08-09-10		1.2	2.8	1.0									5.0
11-12-13		0.8	1.0	0.4	0.2								2.4
14-15-16			0.4										0.4
17-18-19													
20-21-22		0.2	0.2										0.4
23-24-25		0.4	0.4	0.2									1.0
26-27-28		0.6	1.0		0.2								1.8
29-30-31		1.4	2.2	0.2									3.8
32-33-34		1.4	1.2	0.2									2.8
TOTAL	4.6	9.6	11.4	2.2	0.4								28.2

MONTH : OCTOBER

TIME : 12 UTC

MODEL : D

TABLE: Mean number of occurrences of concurrent wind direction (in 30 degree sector) and wind speed in specified ranges.

Wind Direction in tens of degree	WIND SPEED (KNOTS)												
	0	1 TO 5	6 TO 10	11 TO 15	16 TO 20	21 TO 25	26 TO 30	31 TO 35	36 TO 40	41 TO 45	46 TO 50	> 50	TOTAL
Calm	2.4												2.4
Variable													
35-36-01		2.0	0.2	0.2									2.4
02-03-04		0.2	0.2										0.4
05-06-07		0.8	0.2										1.0
08-09-10		0.8	2.2										3.0
11-12-13		0.2	1.2										1.4
14-15-16		0.2											0.2
17-18-19			0.2										0.2
20-21-22			0.2										0.2
23-24-25													
26-27-28		0.2	0.2	0.4									0.8
29-30-31		0.2	0.4										0.6
32-33-34		0.4	0.4										0.8
TOTAL	2.4	5.0	5.4	0.6									13.4

MONTH : OCTOBER

TIME : 15 UTC

MODEL : D

TABLE: Mean number of occurrences of concurrent wind direction (in 30 degree sector) and wind speed in specified ranges.

Wind Direction in tens of degree	WIND SPEED (KNOTS)												
	0	1 TO 5	6 TO 10	11 TO 15	16 TO 20	21 TO 25	26 TO 30	31 TO 35	36 TO 40	41 TO 45	46 TO 50	> 50	TOTAL
Calm													
Variable													
35-36-01													
02-03-04													
05-06-07													
08-09-10													
11-12-13													
14-15-16													
17-18-19													
20-21-22													
23-24-25													
26-27-28													
29-30-31													
32-33-34													
TOTAL													0

MONTH : OCTOBER

TIME : 18 UTC

MODEL : D

TABLE: Mean number of occurrences of concurrent wind direction (in 30 degree sector) and wind speed in specified ranges.

Wind Direction in tens of degree	WIND SPEED (KNOTS)												
	0	1 TO 5	6 TO 10	11 TO 15	16 TO 20	21 TO 25	26 TO 30	31 TO 35	36 TO 40	41 TO 45	46 TO 50	> 50	TOTAL
Calm													
Variable													
35-36-01													
02-03-04													
05-06-07													
08-09-10													
11-12-13													
14-15-16													
17-18-19													
20-21-22													
23-24-25													
26-27-28													
29-30-31													
32-33-34													
TOTAL													0

MONTH : OCTOBER

TIME : 21 UTC

MODEL : D

TABLE: Mean number of occurrences of concurrent wind direction (in 30 degree sector) and wind speed in specified ranges.

Wind Direction in tens of degree	WIND SPEED (KNOTS)												
	0	1 TO 5	6 TO 10	11 TO 15	16 TO 20	21 TO 25	26 TO 30	31 TO 35	36 TO 40	41 TO 45	46 TO 50	> 50	TOTAL
Calm													
Variable													
35-36-01													
02-03-04													
05-06-07													
08-09-10													
11-12-13													
14-15-16													
17-18-19													
20-21-22													
23-24-25													
26-27-28													
29-30-31													
32-33-34													
TOTAL													0

MONTH : NOVEMBER

TIME : 0 UTC

MODEL : D

TABLE: Mean number of occurrences of concurrent wind direction (in 30 degree sector) and wind speed in specified ranges.

Wind Direction in tens of degree	WIND SPEED (KNOTS)												
	0	1 TO 5	6 TO 10	11 TO 15	16 TO 20	21 TO 25	26 TO 30	31 TO 35	36 TO 40	41 TO 45	46 TO 50	> 50	TOTAL
Calm													
Variable													
35-36-01													
02-03-04													
05-06-07													
08-09-10													
11-12-13													
14-15-16													
17-18-19													
20-21-22													
23-24-25													
26-27-28													
29-30-31													
32-33-34													
TOTAL													0

MONTH : NOVEMBER

TIME : 3 UTC

MODEL : D

TABLE: Mean number of occurrences of concurrent wind direction (in 30 degree sector) and wind speed in specified ranges.

Wind Direction in tens of degree	WIND SPEED (KNOTS)												
	0	1 TO 5	6 TO 10	11 TO 15	16 TO 20	21 TO 25	26 TO 30	31 TO 35	36 TO 40	41 TO 45	46 TO 50	> 50	TOTAL
Calm	14.0												14.0
Variable													
35-36-01		0.6	0.4										1.0
02-03-04		0.2											0.2
05-06-07		0.2	0.2										0.4
08-09-10		1.4	0.6										2.0
11-12-13			0.2										0.2
14-15-16													
17-18-19													
20-21-22													
23-24-25		0.2											0.2
26-27-28		0.2		0.2									0.4
29-30-31		0.6	0.2										0.8
32-33-34		0.6	0.2										0.8
TOTAL	14.0	4.0	1.8	0.2									20.0

MONTH : NOVEMBER

TIME : 6 UTC

MODEL : D

TABLE: Mean number of occurrences of concurrent wind direction (in 30 degree sector) and wind speed in specified ranges.

Wind Direction in tens of degree	WIND SPEED (KNOTS)												
	0	1 TO 5	6 TO 10	11 TO 15	16 TO 20	21 TO 25	26 TO 30	31 TO 35	36 TO 40	41 TO 45	46 TO 50	> 50	TOTAL
Calm	6.4												6.4
Variable													
35-36-01		2.4	0.2	0.2									2.8
02-03-04		1.2	0.2										1.4
05-06-07		1.8	1.0										2.8
08-09-10		3.0	2.0										5.0
11-12-13		0.8	1.2	0.4									2.4
14-15-16		0.2											0.2
17-18-19													
20-21-22													
23-24-25													
26-27-28		0.2											0.2
29-30-31		0.2	0.4										0.6
32-33-34			0.6		0.2								0.8
TOTAL	6.4	9.8	5.6	0.6	0.2								22.6

MONTH : NOVEMBER

TIME : 9 UTC

MODEL : D

TABLE: Mean number of occurrences of concurrent wind direction (in 30 degree sector) and wind speed in specified ranges.

Wind Direction in tens of degree	WIND SPEED (KNOTS)												
	0	1 TO 5	6 TO 10	11 TO 15	16 TO 20	21 TO 25	26 TO 30	31 TO 35	36 TO 40	41 TO 45	46 TO 50	> 50	TOTAL
Calm	4.4												4.4
Variable													
35-36-01		2.4	1.4	0.6		0.2							4.6
02-03-04		0.6	0.6										1.2
05-06-07		1.8	2.0	0.2									4.0
08-09-10		1.8	6.4	0.4									8.6
11-12-13		0.2	1.4	0.2									1.8
14-15-16		0.4											0.4
17-18-19													
20-21-22		0.2											0.2
23-24-25		0.2	0.2										0.4
26-27-28				0.2									0.2
29-30-31		0.2	0.2										0.4
32-33-34		0.4	0.2	0.2									0.8
TOTAL	4.4	8.2	12.4	1.8		0.2							27.0

MONTH : NOVEMBER

TIME : 12 UTC

MODEL : D

TABLE: Mean number of occurrences of concurrent wind direction (in 30 degree sector) and wind speed in specified ranges.

Wind Direction in tens of degree	WIND SPEED (KNOTS)												
	0	1 TO 5	6 TO 10	11 TO 15	16 TO 20	21 TO 25	26 TO 30	31 TO 35	36 TO 40	41 TO 45	46 TO 50	> 50	TOTAL
Calm	0.2												0.2
Variable													
35-36-01		1.0											1.0
02-03-04													
05-06-07		0.8	1.6										2.4
08-09-10		1.6	3.2	0.6									5.4
11-12-13		0.8	0.8										1.6
14-15-16		0.2											0.2
17-18-19													
20-21-22													
23-24-25		0.2											0.2
26-27-28													
29-30-31													
32-33-34		0.2	0.2	0.2									0.6
TOTAL	0.2	4.8	5.8	0.8									11.6

MONTH : NOVEMBER

TIME : 15 UTC

MODEL : D

TABLE: Mean number of occurrences of concurrent wind direction (in 30 degree sector) and wind speed in specified ranges.

Wind Direction in tens of degree	WIND SPEED (KNOTS)												
	0	1 TO 5	6 TO 10	11 TO 15	16 TO 20	21 TO 25	26 TO 30	31 TO 35	36 TO 40	41 TO 45	46 TO 50	> 50	TOTAL
Calm													
Variable													
35-36-01													
02-03-04													
05-06-07													
08-09-10													
11-12-13													
14-15-16													
17-18-19													
20-21-22													
23-24-25													
26-27-28													
29-30-31													
32-33-34													
TOTAL													0

MONTH : NOVEMBER

TIME : 18 UTC

MODEL : D

TABLE: Mean number of occurrences of concurrent wind direction (in 30 degree sector) and wind speed in specified ranges.

Wind Direction in tens of degree	WIND SPEED (KNOTS)												
	0	1 TO 5	6 TO 10	11 TO 15	16 TO 20	21 TO 25	26 TO 30	31 TO 35	36 TO 40	41 TO 45	46 TO 50	> 50	TOTAL
Calm													
Variable													
35-36-01													
02-03-04													
05-06-07													
08-09-10													
11-12-13													
14-15-16													
17-18-19													
20-21-22													
23-24-25													
26-27-28													
29-30-31													
32-33-34													
TOTAL													0

MONTH : NOVEMBER

TIME : 21 UTC

MODEL : D

TABLE: Mean number of occurrences of concurrent wind direction (in 30 degree sector) and wind speed in specified ranges.

Wind Direction in tens of degree	WIND SPEED (KNOTS)												
	0	1 TO 5	6 TO 10	11 TO 15	16 TO 20	21 TO 25	26 TO 30	31 TO 35	36 TO 40	41 TO 45	46 TO 50	> 50	TOTAL
Calm													
Variable													
35-36-01													
02-03-04													
05-06-07													
08-09-10													
11-12-13													
14-15-16													
17-18-19													
20-21-22													
23-24-25													
26-27-28													
29-30-31													
32-33-34													
TOTAL													0

MONTH : DECEMBER

TIME : 0 UTC

MODEL : D

TABLE: Mean number of occurrences of concurrent wind direction (in 30 degree sector) and wind speed in specified ranges.

Wind Direction in tens of degree	WIND SPEED (KNOTS)												
	0	1 TO 5	6 TO 10	11 TO 15	16 TO 20	21 TO 25	26 TO 30	31 TO 35	36 TO 40	41 TO 45	46 TO 50	> 50	TOTAL
Calm													
Variable													
35-36-01													
02-03-04													
05-06-07													
08-09-10													
11-12-13													
14-15-16													
17-18-19													
20-21-22													
23-24-25													
26-27-28													
29-30-31													
32-33-34													
TOTAL													0

MONTH : DECEMBER

TIME : 3 UTC

MODEL : D

TABLE: Mean number of occurrences of concurrent wind direction (in 30 degree sector) and wind speed in specified ranges.

Wind Direction in tens of degree	WIND SPEED (KNOTS)												
	0	1 TO 5	6 TO 10	11 TO 15	16 TO 20	21 TO 25	26 TO 30	31 TO 35	36 TO 40	41 TO 45	46 TO 50	> 50	TOTAL
Calm	17.0												17.0
Variable													
35-36-01		0.8											0.8
02-03-04		0.4	0.2										0.6
05-06-07			0.6										0.6
08-09-10		2.8	1.0										3.8
11-12-13		0.6	0.4										1.0
14-15-16													
17-18-19													
20-21-22													
23-24-25													
26-27-28			0.2										0.2
29-30-31													
32-33-34													
TOTAL	17.0	4.6	2.4										24.0

MONTH : DECEMBER

TIME : 6 UTC

MODEL : D

TABLE: Mean number of occurrences of concurrent wind direction (in 30 degree sector) and wind speed in specified ranges.

Wind Direction in tens of degree	WIND SPEED (KNOTS)												
	0	1 TO 5	6 TO 10	11 TO 15	16 TO 20	21 TO 25	26 TO 30	31 TO 35	36 TO 40	41 TO 45	46 TO 50	> 50	TOTAL
Calm	5.8												5.8
Variable													
35-36-01		1.0	0.6										1.6
02-03-04		0.4											0.4
05-06-07		2.8	1.6	0.2									4.6
08-09-10		5.2	3.8	1.0									10.0
11-12-13		1.6	2.2	0.6									4.4
14-15-16		0.2											0.2
17-18-19													
20-21-22													
23-24-25													
26-27-28													
29-30-31		0.4											0.4
32-33-34			0.2	0.2									0.4
TOTAL	5.8	11.6	8.4	2.0									27.8

MONTH : DECEMBER

TIME : 9 UTC

MODEL : D

TABLE: Mean number of occurrences of concurrent wind direction (in 30 degree sector) and wind speed in specified ranges.

Wind Direction in tens of degree	WIND SPEED (KNOTS)												
	0	1 TO 5	6 TO 10	11 TO 15	16 TO 20	21 TO 25	26 TO 30	31 TO 35	36 TO 40	41 TO 45	46 TO 50	> 50	TOTAL
Calm	4.0												4.0
Variable													
35-36-01		0.8	0.6										1.4
02-03-04		1.0	0.6										1.6
05-06-07		0.6	2.4	0.4									3.4
08-09-10		2.2	7.8	2.6									12.6
11-12-13		1.0	1.8	1.0									3.8
14-15-16		0.4											0.4
17-18-19													
20-21-22													
23-24-25													
26-27-28		0.4											0.4
29-30-31			0.2										0.2
32-33-34		0.2	0.2	0.2									0.6
TOTAL	4.0	6.6	13.6	4.2									28.4

MONTH : DECEMBER

TIME : 12 UTC

MODEL : D

TABLE: Mean number of occurrences of concurrent wind direction (in 30 degree sector) and wind speed in specified ranges.

Wind Direction in tens of degree	WIND SPEED (KNOTS)												
	0	1 TO 5	6 TO 10	11 TO 15	16 TO 20	21 TO 25	26 TO 30	31 TO 35	36 TO 40	41 TO 45	46 TO 50	> 50	TOTAL
Calm	0.8												0.8
Variable													
35-36-01		0.4	0.4										0.8
02-03-04		0.2											0.2
05-06-07		0.6	1.8	0.2									2.6
08-09-10		2.2	6.2	0.4									8.8
11-12-13			1.8	0.2									2.0
14-15-16		0.6											0.6
17-18-19													
20-21-22		0.2											0.2
23-24-25													
26-27-28													
29-30-31													
32-33-34													
TOTAL	0.8	4.2	10.2	0.8									16.0

MONTH : DECEMBER

TIME : 15 UTC

MODEL : D

TABLE: Mean number of occurrences of concurrent wind direction (in 30 degree sector) and wind speed in specified ranges.

Wind Direction in tens of degree	WIND SPEED (KNOTS)												
	0	1 TO 5	6 TO 10	11 TO 15	16 TO 20	21 TO 25	26 TO 30	31 TO 35	36 TO 40	41 TO 45	46 TO 50	> 50	TOTAL
Calm													
Variable													
35-36-01													
02-03-04													
05-06-07													
08-09-10													
11-12-13													
14-15-16													
17-18-19													
20-21-22													
23-24-25													
26-27-28													
29-30-31													
32-33-34													
TOTAL													0

MONTH : DECEMBER

TIME : 18 UTC

MODEL : D

TABLE: Mean number of occurrences of concurrent wind direction (in 30 degree sector) and wind speed in specified ranges.

Wind Direction in tens of degree	WIND SPEED (KNOTS)												
	0	1 TO 5	6 TO 10	11 TO 15	16 TO 20	21 TO 25	26 TO 30	31 TO 35	36 TO 40	41 TO 45	46 TO 50	> 50	TOTAL
Calm													
Variable													
35-36-01													
02-03-04													
05-06-07													
08-09-10													
11-12-13													
14-15-16													
17-18-19													
20-21-22													
23-24-25													
26-27-28													
29-30-31													
32-33-34													
TOTAL													0

MONTH : DECEMBER

TIME : 21 UTC

MODEL : D

TABLE: Mean number of occurrences of concurrent wind direction (in 30 degree sector) and wind speed in specified ranges.

Wind Direction in tens of degree	WIND SPEED (KNOTS)												
	0	1 TO 5	6 TO 10	11 TO 15	16 TO 20	21 TO 25	26 TO 30	31 TO 35	36 TO 40	41 TO 45	46 TO 50	> 50	TOTAL
Calm													
Variable													
35-36-01													
02-03-04													
05-06-07													
08-09-10													
11-12-13													
14-15-16													
17-18-19													
20-21-22													
23-24-25													
26-27-28													
29-30-31													
32-33-34													
TOTAL													0

MONTH : JANUARY

MODEL : E

TABLE: Mean number of occurrence of screen temperature (in ranges of 5 degrees) at specified time.

Time UTC	TEMPERATURE (°C)												Total
	-10 to -5	-5 to 0	0 to 5	5 to 10	10 to 15	15 to 20	20 to 25	25 to 30	30 to 35	35 to 40	40 to 45	45 to 50	
0													
1													
2													
3							13.2	4.2					17.4
4							6.4	15.6					22.0
5							1.0	20.8	0.4				22.2
6								20.0	2.4				22.4
7								16.8	9.6				26.4
8								9.4	17.2				26.6
9								6.8	16.4	0.2			23.4
10								5.8	21.0	0.2			27.0
11								9.4	15.0				24.4
12								6.0	3.2				9.2
13													
14													
15													
16													
17													
18													
19													
20													
21													
22													
23													
Total							20.6	114.8	85.2	0.4			221.0

MONTH : FEBRUARY

MODEL : E

TABLE: Mean number of occurrence of screen temperature (in ranges of 5 degrees) at specified time.

Time UTC	TEMPERATURE (°C)												Total
	-10 to -5	-5 to 0	0 to 5	5 to 10	10 to 15	15 to 20	20 to 25	25 to 30	30 to 35	35 to 40	40 to 45	45 to 50	
0													
1							0.2	0.2					0.4
2							3.6	0.6					4.2
3							7.4	13.6					21.0
4							1.2	18.4	2.8				22.4
5								16.4	6.0				22.4
6								7.0	13.8	1.0			21.8
7								3.8	20.4	0.8			25.0
8								1.2	20.4	3.8			25.4
9								0.4	19.8	4.0			24.2
10								0.4	20.0	4.4			24.8
11								0.4	16.6	3.4			20.4
12								0.6	7.4	0.8			8.8
13													
14													
15													
16													
17													
18													
19													
20													
21													
22													
23													
Total							12.4	63.0	127.2	18.2			220.8

MONTH : MARCH

MODEL : E

TABLE: Mean number of occurrence of screen temperature (in ranges of 5 degrees) at specified time.

Time UTC	TEMPERATURE (°C)												Total
	-10 to -5	-5 to 0	0 to 5	5 to 10	10 to 15	15 to 20	20 to 25	25 to 30	30 to 35	35 to 40	40 to 45	45 to 50	
0													
1								3.8					3.8
2							2.2	12.0	0.8				15.0
3								15.4	7.0				22.4
4								11.4	15.2	0.2			26.8
5								1.8	23.6	1.2			26.6
6								0.2	19.8	5.4			25.4
7								0.2	13.2	12.8			26.2
8									6.6	18.4			25.0
9									4.0	17.0	0.4		21.4
10								0.4	3.0	19.8	1.2		24.4
11								0.2	2.2	13.2	0.8		16.4
12									2.8	4.8			7.6
13													
14													
15													
16													
17													
18													
19													
20													
21													
22													
23													
Total							2.2	45.4	98.2	92.8	2.4		241.0

MONTH : APRIL

MODEL : E

TABLE: Mean number of occurrence of screen temperature (in ranges of 5 degrees) at specified time.

Time UTC	TEMPERATURE (°C)												Total
	-10 to -5	-5 to 0	0 to 5	5 to 10	10 to 15	15 to 20	20 to 25	25 to 30	30 to 35	35 to 40	40 to 45	45 to 50	
0													
1								1.4	0.4				1.8
2								6.2	8.8				15.0
3								2.4	19.6	0.2			22.2
4								0.2	18.8	2.4			21.4
5									11.0	10.4			21.4
6								0.2	6.2	15.0			21.4
7								0.2	2.6	19.2	0.2		22.2
8									1.2	17.2	1.6		20.0
9									0.6	13.2	4.0		17.8
10									0.4	13.0	4.8		18.2
11									0.4	14.4	3.6		18.4
12									1.2	2.0	0.4		3.6
13										0.2			0.2
14													
15													
16													
17													
18													
19													
20													
21													
22													
23													
Total								10.6	71.2	107.2	14.6		203.6

MONTH : MAY

MODEL : E

TABLE: Mean number of occurrence of screen temperature (in ranges of 5 degrees) at specified time.

Time UTC	TEMPERATURE (°C)												Total
	-10 to -5	-5 to 0	0 to 5	5 to 10	10 to 15	15 to 20	20 to 25	25 to 30	30 to 35	35 to 40	40 to 45	45 to 50	
0													
1								0.2					0.2
2								0.8	11.2				12.0
3							0.2	1.6	18.8	1.6			22.2
4								0.8	16.0	6.8			23.6
5								0.2	9.6	13.4			23.2
6									5.2	16.2	0.2		21.6
7									2.8	18.6	1.4		22.8
8								0.2	1.6	17.6	4.4		23.8
9									1.0	11.0	7.2		19.2
10									1.2	11.0	6.2		18.4
11									1.6	13.2	4.0		18.8
12								0.2	0.2	5.0	2.2		7.6
13										0.4			0.4
14													
15													
16													
17													
18													
19													
20													
21													
22													
23													
Total							0.2	4.0	69.2	114.8	25.6		213.8

MONTH : JUNE

MODEL : E

TABLE: Mean number of occurrence of screen temperature (in ranges of 5 degrees) at specified time.

Time UTC	TEMPERATURE (°C)												Total
	-10 to -5	-5 to 0	0 to 5	5 to 10	10 to 15	15 to 20	20 to 25	25 to 30	30 to 35	35 to 40	40 to 45	45 to 50	
0													
1													
2								2.8	8.8				11.6
3								4.4	24.2	0.4			29.0
4								2.2	25.2	0.4			27.8
5								0.8	25.6	2.2			28.6
6								0.4	20.2	6.4			27.0
7								0.4	14.0	13.2			27.6
8								0.4	9.8	17.2	0.2		27.6
9							0.2	0.4	4.6	16.8	0.4		22.4
10							0.2	0.4	4.6	17.4	0.6		23.2
11							0.2	0.2	4.8	12.6	0.4		18.2
12									1.2	2.8			4.0
13									0.2				0.2
14													
15													
16													
17													
18													
19													
20													
21													
22													
23													
Total							0.6	12.4	143.2	89.4	1.6		247.2

MONTH : JULY

MODEL : E

TABLE: Mean number of occurrence of screen temperature (in ranges of 5 degrees) at specified time.

Time UTC	TEMPERATURE (°C)												Total
	-10 to -5	-5 to 0	0 to 5	5 to 10	10 to 15	15 to 20	20 to 25	25 to 30	30 to 35	35 to 40	40 to 45	45 to 50	
0													
1													
2								11.2	1.6				12.8
3								14.8	11.0				25.8
4								7.4	18.8				26.2
5								4.0	22.0				26.0
6								2.4	26.6	0.6			29.6
7								1.4	25.0	3.4			29.8
8								1.0	23.6	6.0			30.6
9								1.0	19.2	8.6			28.8
10								1.8	18.2	10.2			30.2
11								1.2	15.2	7.8			24.2
12								0.8	3.8	2.2			6.8
13								0.2		0.2			0.4
14													
15													
16													
17													
18													
19													
20													
21													
22													
23													
Total								47.2	185.0	39.0			271.2

MONTH : AUGUST

MODEL : E

TABLE: Mean number of occurrence of screen temperature (in ranges of 5 degrees) at specified time.

Time UTC	TEMPERATURE (°C)												Total
	-10 to -5	-5 to 0	0 to 5	5 to 10	10 to 15	15 to 20	20 to 25	25 to 30	30 to 35	35 to 40	40 to 45	45 to 50	
0													
1													
2								11.8	0.6				12.4
3							0.2	18.8	6.0				25.0
4								11.8	14.6				26.4
5								6.0	20.6				26.6
6								3.6	25.8	0.2			29.6
7								2.0	27.0	0.8			29.8
8								1.6	25.2	3.2			30.0
9								1.0	22.6	5.8			29.4
10								2.2	21.0	7.4			30.6
11								3.0	14.2	7.0			24.2
12								2.4	6.6	1.8			10.8
13								0.6					0.6
14													
15													
16													
17													
18													
19													
20													
21													
22													
23													
Total							0.2	64.8	184.2	26.2			275.4

MONTH : SEPTEMBER

MODEL : E

TABLE: Mean number of occurrence of screen temperature (in ranges of 5 degrees) at specified time.

Time UTC	TEMPERATURE (°C)												Total
	-10 to -5	-5 to 0	0 to 5	5 to 10	10 to 15	15 to 20	20 to 25	25 to 30	30 to 35	35 to 40	40 to 45	45 to 50	
0													
1								0.2					0.2
2							0.2	11.4	0.4				12.0
3							0.4	17.6	5.6				23.6
4								12.2	14.2				26.4
5								7.2	19.2				26.4
6								4.8	23.6	0.4			28.8
7								3.4	24.2	1.6			29.2
8								2.8	22.2	4.6			29.6
9							0.2	2.8	17.0	6.8			26.8
10							0.2	2.8	17.2	7.4			27.6
11								2.2	12.8	6.2			21.2
12								1.0	4.8	1.2			7.0
13							0.2		0.2				0.4
14													
15													
16													
17													
18													
19													
20													
21													
22													
23													
Total							1.2	68.4	161.4	28.2			259.2

MONTH : OCTOBER

MODEL : E

TABLE: Mean number of occurrence of screen temperature (in ranges of 5 degrees) at specified time.

Time UTC	TEMPERATURE (°C)												Total
	-10 to -5	-5 to 0	0 to 5	5 to 10	10 to 15	15 to 20	20 to 25	25 to 30	30 to 35	35 to 40	40 to 45	45 to 50	
0													
1													
2							0.4	11.2		0.2			11.8
3								21.4	2.6				24.0
4								16.6	12.8				29.4
5								10.4	18.8				29.2
6								5.6	24.0				29.6
7								3.0	27.0	0.4			30.4
8								3.4	25.6	2.0			31.0
9								2.8	22.6	2.8			28.2
10								3.2	23.6	2.8			29.6
11							0.2	5.4	18.6	1.4			25.6
12								3.6	9.8				13.4
13								0.2					0.2
14													
15													
16													
17													
18													
19													
20													
21													
22													
23													
Total							0.6	86.8	185.4	9.6			282.4

MONTH : NOVEMBER

MODEL : E

TABLE: Mean number of occurrence of screen temperature (in ranges of 5 degrees) at specified time.

Time UTC	TEMPERATURE (°C)												Total
	-10 to -5	-5 to 0	0 to 5	5 to 10	10 to 15	15 to 20	20 to 25	25 to 30	30 to 35	35 to 40	40 to 45	45 to 50	
0													
1								0.4					0.4
2							1.8	3.4					5.2
3							4.2	15.8					20.0
4							2.8	18.2	1.8				22.8
5							1.0	17.6	4.2				22.8
6							0.8	13.2	8.6				22.6
7							0.8	11.6	17.0				29.4
8							0.8	8.8	19.2				28.8
9							1.0	7.6	17.6	0.8			27.0
10							0.8	9.4	18.8	0.4			29.4
11							1.0	9.2	15.0				25.2
12							0.2	6.6	4.8				11.6
13													
14													
15													
16													
17													
18													
19													
20													
21													
22													
23													
Total							15.2	121.8	107.0	1.2			245.2

MONTH : DECEMBER

MODEL : E

TABLE: Mean number of occurrence of screen temperature (in ranges of 5 degrees) at specified time.

Time UTC	TEMPERATURE (°C)												Total
	-10 to -5	-5 to 0	0 to 5	5 to 10	10 to 15	15 to 20	20 to 25	25 to 30	30 to 35	35 to 40	40 to 45	45 to 50	
0													
1													
2							0.2						0.2
3							13.6	10.4					24.0
4							6.8	17.6					24.4
5							1.0	23.4	0.4				24.8
6							0.6	24.8	2.4				27.8
7							0.4	22.2	7.8				30.4
8							0.4	19.2	10.8				30.4
9							0.2	14.6	13.6				28.4
10							0.2	15.8	13.4				29.4
11							0.6	19.6	9.0				29.2
12							0.6	13.8	1.6				16.0
13													
14													
15													
16													
17													
18													
19													
20													
21													
22													
23													
Total							24.6	181.4	59.0				265.0

Month : January

TABLE : VI

TABLE: Mean daily atmospheric pressure (hPa) at mean sea level (msl) at standard times of synoptic observation (UTC).

DATE	0000	0300	0600	1200	1800
1		1001.3	0999.7	0998.7	
2		0996.0	0999.5	0999.2	
3		1000.5	0999.5	0994.6	
4		1001.0	0999.1	0996.4	
5		1000.4	0999.1	0996.6	
6		0999.2	0998.1	0996.3	
7		0998.9	0998.0	0996.0	
8		0999.5	0998.2	0995.5	
9		0999.5	0998.7	0997.2	
10		0999.8	0998.9	0995.8	
11		1000.0	0999.0	0995.7	
12		1000.7	0999.3	0993.9	
13		1001.0	0999.1	0995.3	
14		1000.4	0999.3	0995.6	
15		1001.4	0998.7	0995.1	
16		1000.4	0998.3	0995.0	
17		0999.7	0998.6	0995.6	
18		0999.9	0999.3	0995.9	
19		1000.3	1000.5	0995.8	
20		1001.6	1000.4	0998.3	
21		0999.6	0999.5	0995.6	
22		0999.8	0999.6	0996.0	
23		0999.0	0999.4	0996.0	
24		0999.1	0999.1	0996.3	
25		0998.9	0999.0	0994.1	
26		0998.7	0998.1	0993.3	
27		0999.2	0998.8	0994.3	
28		0999.8	0999.7	0994.5	
29		1000.9	1000.1	0992.8	
30		1001.1	1000.4	0992.0	
31		1000.4	0999.2		
MEAN		0999.9	0999.2	0995.6	

Month : February

TABLE : VI

TABLE: Mean daily atmospheric pressure (hPa) at mean sea level (msl) at standard times of synoptic observation (UTC).

DATE	0000	0300	0600	1200	1800
1		1001.0	1000.3	0995.0	
2		1000.9	1000.1	0996.5	
3		1000.8	0999.6	0995.7	
4		1001.4	1000.1	0993.8	
5		1001.8	1001.4	0993.9	
6		1000.3	0999.3	0993.8	
7		0999.2	0998.6	0993.8	
8		0999.7	0999.0	0994.4	
9		0999.1	0998.5	0995.8	
10		0999.6	0998.1	0995.6	
11		1000.0	0999.5	0996.6	
12		1001.0	1000.7	0997.6	
13		1002.8	1002.1	0995.7	
14		1002.3	1001.4	0993.6	
15		1001.9	1000.5	0994.3	
16		1001.1	1000.0	0995.7	
17		0999.5	0998.8	0995.0	
18		0999.1	0998.4	0995.4	
19		0998.3	0997.9	0994.4	
20		0999.3	0998.4	0995.2	
21		0998.8	0998.0	0997.3	
22		0999.0	0998.0	0996.0	
23		0998.5	0997.5	0996.4	
24		0998.4	0997.8	0992.4	
25		0998.4	0997.3	0993.2	
26		0997.0	0996.3	0993.3	
27		0995.6	0995.9	0992.1	
28		0997.5	0996.5	0991.2	
29		1000.9	1000.1	0991.9	
MEAN		0999.7	0998.9	0994.7	

Month : March

TABLE : VI

TABLE: Mean daily atmospheric pressure (hPa) at mean sea level (msl) at standard times of synoptic observation (UTC).

DATE	0000	0300	0600	1200	1800
1		0993.8	0994.2	0992.1	
2		0997.8	0997.3	0992.8	
3		0997.2	0995.8	0989.6	
4		0996.4	0995.8	0975.6	
5		0996.9	0995.7	0991.1	
6		0996.3	0995.5	0992.1	
7		0995.9	0995.9	0990.8	
8		0989.4	0996.3	0990.6	
9		0997.2	0996.2	0991.2	
10		0997.0	0997.0	0993.3	
11		0998.0	0997.1	0992.2	
12		0999.1	0998.2	0991.5	
13		0998.3	0997.6	0993.0	
14		0997.7	0996.8	0993.2	
15		0997.6	0996.8	0994.1	
16		0997.6	0996.6	0992.8	
17		0997.2	0996.8	0990.7	
18		0997.3	0996.6	0991.8	
19		0997.4	0995.5	0990.5	
20		0996.1	0995.3	0991.5	
21		0996.7	0995.5	0989.8	
22		0996.6	0995.5	0991.5	
23		0996.5	0995.4	0993.1	
24		0996.5	0995.5	0992.9	
25		0996.7	0995.9	0989.5	
26		0997.2	0996.5	0989.9	
27		0997.2	0995.9	0989.4	
28		0996.6	0995.8	0991.2	
29		0995.2	0994.6	0991.9	
30		0994.7	0994.4	0994.7	
31		0994.9	0993.9		
MEAN		0996.5	0996.0	0991.0	

Month : April

TABLE : VI

TABLE: Mean daily atmospheric pressure (hPa) at mean sea level (msl) at standard times of synoptic observation (UTC).

DATE	0000	0300	0600	1200	1800
1		0994.7	0993.6	0990.6	
2		0995.0	0993.4	0990.9	
3		0995.0	0994.0	0990.9	
4		0995.6	0994.4	0989.3	
5		0995.3	0994.0	0992.4	
6		0995.3	0994.1	0992.0	
7		0996.1	0994.6	0990.5	
8		0995.2	0994.1	0989.1	
9		0995.6	0994.7	0989.1	
10		0995.5	0994.4	0989.2	
11		0996.0	0994.6	0988.7	
12		0995.5	0994.5	0988.0	
13		0995.8	0995.1	0987.9	
14		0995.6	0994.3	0988.4	
15		0995.4	0994.3	0991.2	
16		0995.4	0994.0	0987.9	
17		0995.5	0994.0	0990.7	
18		0995.1	0994.0	0991.8	
19		0994.4	0993.0	0990.5	
20		0993.4	0992.4	0991.5	
21		0993.9	0992.8	0989.8	
22		0993.9	0992.8	0991.5	
23		0994.8	0993.9	0993.1	
24		0996.3	0993.8	0992.9	
25		0993.9	0992.5	0989.5	
26		0993.5	0992.4	0989.9	
27		0993.8	0992.5	0989.4	
28		0994.5	0993.1	0991.2	
29		0994.7	0993.3	0991.9	
30		0993.4	0992.3	0994.7	
MEAN		0994.9	0993.7	0989.8	

Month : May

TABLE : VI

TABLE: Mean daily atmospheric pressure (hPa) at mean sea level (msl) at standard times of synoptic observation (UTC).

DATE	0000	0300	0600	1200	1800
1		0994.0	0992.0	0985.6	
2		0993.8	0992.7	0985.1	
3		0994.1	0993.2	0988.6	
4		0995.3	0993.8	0990.4	
5		0995.0	0993.8	0990.0	
6		0994.6	0993.6	0987.4	
7		0995.0	0993.6	0987.6	
8		0993.9	0993.0	0987.4	
9		0993.2	0992.0	0986.6	
10		0993.5	0992.6	0987.8	
11		0993.6	0992.6	0987.6	
12		0993.6	0992.5	0988.8	
13		0993.0	0991.4	0987.1	
14		0992.3	0991.2	0990.6	
15		0992.0	0990.9	0989.3	
16		0992.1	0990.1	0988.6	
17		0992.2	0990.7	0987.3	
18		0992.2	0991.0	0987.4	
19		0992.5	0990.7	0987.6	
20		0992.4	0991.2	0989.8	
21		0992.3	0990.8	0986.9	
22		0992.6	0991.8	0986.7	
23		0992.1	0990.9	0986.2	
24		0992.3	0990.3	0986.3	
25		0991.2	0989.6	0985.2	
26		0990.0	0988.6	0986.0	
27		0990.9	0990.2	0984.6	
28		0990.7	0989.2	0984.5	
29		0989.9	0989.2	0985.3	
30		0990.7	0989.9	0984.1	
31		0990.2	0989.3	0989.8	
MEAN		0992.6	0991.4	0987.2	

Month : June

TABLE : VI

TABLE: Mean daily atmospheric pressure (hPa) at mean sea level (msl) at standard times of synoptic observation (UTC).

DATE	0000	0300	0600	1200	1800
1		0992.0	0991.7	0986.1	
2		0991.7	0990.8	0984.3	
3		0992.4	0991.6	0986.2	
4		0992.4	0991.2	0984.3	
5		0992.3	0990.7	0984.8	
6		0992.4	0991.2	0984.8	
7		0992.4	0991.3	0985.7	
8		0992.2	0991.6	0988.0	
9		0990.4	0989.3	0986.9	
10		0989.8	0988.8	0988.3	
11		0988.4	0988.5	0985.7	
12		0989.8	0988.5	0984.9	
13		0990.1	0989.1	0985.5	
14		0990.8	0989.6	0985.2	
15		0991.9	0990.1	0985.9	
16		0991.7	0990.5	0987.2	
17		0991.7	0990.7	0987.3	
18		0992.0	0991.0	0987.4	
19		0991.8	0990.9	0987.6	
20		0992.0	0991.1	0989.8	
21		0991.8	0990.5	0986.9	
22		0991.3	0990.1	0986.7	
23		0990.4	0989.7	0986.2	
24		0991.2	0990.2	0986.3	
25		0990.6	0989.6	0985.2	
26		0990.4	0989.3	0986.0	
27		0989.9	0989.9	0984.6	
28		0991.3	0990.1	0984.5	
29		0990.9	0989.9	0985.3	
30		0990.8	0990.0	0984.1	
MEAN		0991.2	0990.2	0985.9	

Month : July

TABLE : VI

TABLE: Mean daily atmospheric pressure (hPa) at mean sea level (msl) at standard times of synoptic observation (UTC).

<i>DATE</i>	<i>0000</i>	<i>0300</i>	<i>0600</i>	<i>1200</i>	<i>1800</i>
1		0990.7	0990.3	0987.3	
2		0990.4	0989.6	0987.7	
3		0991.4	0990.6	0986.0	
4		0991.3	0990.6	0987.0	
5		0991.0	0990.1	0987.3	
6		0990.3	0989.5	0986.2	
7		0990.7	0990.2	0986.6	
8		0991.6	0990.4	0989.4	
9		0989.3	0988.9	0988.4	
10		0990.6	0989.9	0987.6	
11		0991.1	0990.0	0988.6	
12		0991.0	0990.7	0986.3	
13		0990.9	0990.2	0987.0	
14		0990.5	0989.7	0987.9	
15		0990.0	0989.2	0988.0	
16		0990.2	0989.7	0985.6	
17		0989.9	0989.8	0986.5	
18		0990.0	0989.5	0987.4	
19		0990.4	0990.4	0986.5	
20		0990.2	0989.5	0987.2	
21		0990.4	0990.0	0988.4	
22		0990.4	0989.7	0989.2	
23		0990.5	0990.0	0988.3	
24		0991.1	0990.5	0990.0	
25		0992.6	0991.3	0985.2	
26		0992.8	0991.7	0986.0	
27		0992.2	0991.2	0984.6	
28		0991.8	0991.2	0984.5	
29		0990.8	0990.8	0985.3	
30		0991.9	0991.7	0984.1	
31		0992.4	0991.6	0985.9	
MEAN		0990.9	0990.3	0987.5	

Month : August

TABLE : VI

TABLE: Mean daily atmospheric pressure (hPa) at mean sea level (msl) at standard times of synoptic observation (UTC).

<i>DATE</i>	<i>0000</i>	<i>0300</i>	<i>0600</i>	<i>1200</i>	<i>1800</i>
1		0992.0	0991.6	0989.0	
2		0992.2	0991.4	0988.6	
3		0992.2	0991.4	0988.5	
4		0990.9	0989.9	0985.7	
5		0990.2	0989.1	0987.5	
6		0990.8	0989.2	0986.7	
7		0990.5	0989.9	0989.1	
8		0990.6	0989.8	0989.9	
9		0991.4	0991.2	0990.0	
10		0992.5	0991.9	0986.6	
11		0992.0	0991.3	0986.3	
12		0992.0	0992.1	0989.3	
13		0991.4	0991.7	0987.0	
14		0990.8	0991.3	0987.4	
15		0991.0	0990.9	0987.1	
16		0991.2	0990.9	0988.3	
17		0991.2	0991.1	0986.9	
18		0991.5	0990.6	0987.2	
19		0990.8	0990.4	0987.3	
20		0991.8	0991.2	0988.0	
21		0992.7	0992.2	0987.9	
22		0993.4	0991.8	0987.6	
23		0993.4	0992.0	0986.2	
24		0993.6	0992.1	0985.2	
25		0993.4	0992.0	0987.7	
26		0992.6	0990.6	0986.6	
27		0992.0	0990.2	0985.0	
28		0991.7	0990.1	0987.8	
29		0991.9	0990.1	0985.3	
30		0991.7	0990.8	0984.1	
31		0992.2	0991.4	0985.9	
MEAN		0991.8	0991.0	0987.5	

Month : September

TABLE : VI

TABLE: Mean daily atmospheric pressure (hPa) at mean sea level (msl) at standard times of synoptic observation (UTC).

<i>DATE</i>	<i>0000</i>	<i>0300</i>	<i>0600</i>	<i>1200</i>	<i>1800</i>
1		0993.2	0992.6	0989.1	
2		0993.6	0992.8	0988.5	
3		0993.0	0992.2	0988.5	
4		0993.0	0992.1	0988.1	
5		0992.0	0991.4	0988.0	
6		0991.8	0990.7	0987.7	
7		0991.4	0990.9	0987.6	
8		0993.1	0992.3	0986.9	
9		0993.2	0992.0	0987.4	
10		0992.7	0991.8	0989.7	
11		0993.4	0992.2	0987.3	
12		0993.9	0992.9	0990.0	
13		0993.4	0992.5	0990.0	
14		0993.0	0992.6	0989.6	
15		0993.5	0991.9	0990.0	
16		0993.4	0992.1	0988.0	
17		0993.1	0992.4	0991.5	
18		0992.6	0992.4	0988.7	
19		0993.3	0992.3	0990.5	
20		0992.1	0991.1	0994.6	
21		0991.5	0990.8	0992.1	
22		0992.7	0992.0	0994.4	
23		0993.9	0993.0	0991.8	
24		0994.7	0993.8	0985.2	
25		0993.9	0992.8	0987.7	
26		0994.7	0992.9	0986.6	
27		0994.4	0993.1	0985.0	
28		0994.7	0993.2	0987.8	
29		0995.2	0993.7	0985.3	
30		0995.8	0994.1	0984.1	
MEAN		0993.3	0992.4	0989.6	

Month : October

TABLE : VI

TABLE: Mean daily atmospheric pressure (hPa) at mean sea level (msl) at standard times of synoptic observation (UTC).

<i>DATE</i>	<i>0000</i>	<i>0300</i>	<i>0600</i>	<i>1200</i>	<i>1800</i>
1		0994.9	0993.7	0990.6	
2		0996.2	0993.7	0988.8	
3		0994.9	0993.2	0991.3	
4		0995.0	0993.7	0991.2	
5		0995.1	0993.5	0990.2	
6		0994.7	0992.8	0989.6	
7		0980.4	0993.1	0990.0	
8		0994.4	0992.8	0991.5	
9		0994.7	0992.7	0989.3	
10		0994.0	0992.7	0990.2	
11		0993.7	0992.2	0989.3	
12		0993.1	0992.1	0990.2	
13		0993.2	0991.7	0987.6	
14		0993.6	0992.1	0988.7	
15		0993.1	0992.4	0990.2	
16		0993.6	0992.7	0991.7	
17		0993.6	0993.3	0990.8	
18		0995.2	0993.7	0991.2	
19		0996.5	0994.6	0992.8	
20		0996.5	0995.2	0993.8	
21		0994.5	0995.7	0991.9	
22		0996.4	0995.3	0991.8	
23		0995.7	0994.2	0988.3	
24		0996.3	0995.6	0990.6	
25		0996.9	0996.3	0991.3	
26		0997.3	0996.8	0992.7	
27		0997.8	0996.8	0993.0	
28		0998.0	0996.7	0993.4	
29		0997.8	0996.9	0993.4	
30		0997.6	0997.0	0993.3	
31		0997.1	0996.4	0992.9	
MEAN		0994.9	0994.2	0991.0	

Month : November

TABLE : VI

TABLE: Mean daily atmospheric pressure (hPa) at mean sea level (msl) at standard times of synoptic observation (UTC).

<i>DATE</i>	<i>0000</i>	<i>0300</i>	<i>0600</i>	<i>1200</i>	<i>1800</i>
1		0997.5	0997.1	0993.2	
2		0997.5	0996.4	0993.9	
3		0997.9	0996.4	0994.6	
4		0998.1	0996.2	0994.8	
5		0998.0	0996.9	0992.5	
6		0997.9	0996.9	0991.4	
7		0998.6	0997.5	0992.2	
8		0998.9	0997.6	0993.4	
9		0998.5	0997.2	0993.7	
10		0998.0	0996.2	0992.8	
11		0996.7	0996.0	0991.0	
12		0996.8	0995.6	0993.7	
13		0996.7	0995.2	0993.6	
14		0996.3	0994.4	0994.0	
15		0995.9	0994.1	0995.8	
16		0996.3	0994.8	0992.8	
17		0996.4	0995.6	0993.9	
18		0996.6	0995.6	0994.6	
19		0995.7	0994.9	0995.7	
20		0996.7	0996.1	0993.4	
21		0998.0	0996.9	0996.2	
22		0998.9	0997.6	0997.3	
23		0998.5	0997.6	0994.4	
24		0998.8	0997.8	0995.8	
25		0998.7	0997.7	0995.2	
26		0998.1	0996.6	0995.0	
27		0999.0	0997.7	0995.0	
28		0999.6	0998.6	0996.5	
29		1000.2	0999.3	0995.3	
30		0997.8	0999.1	0995.8	
MEAN		0997.8	0996.7	0994.2	

Month : December

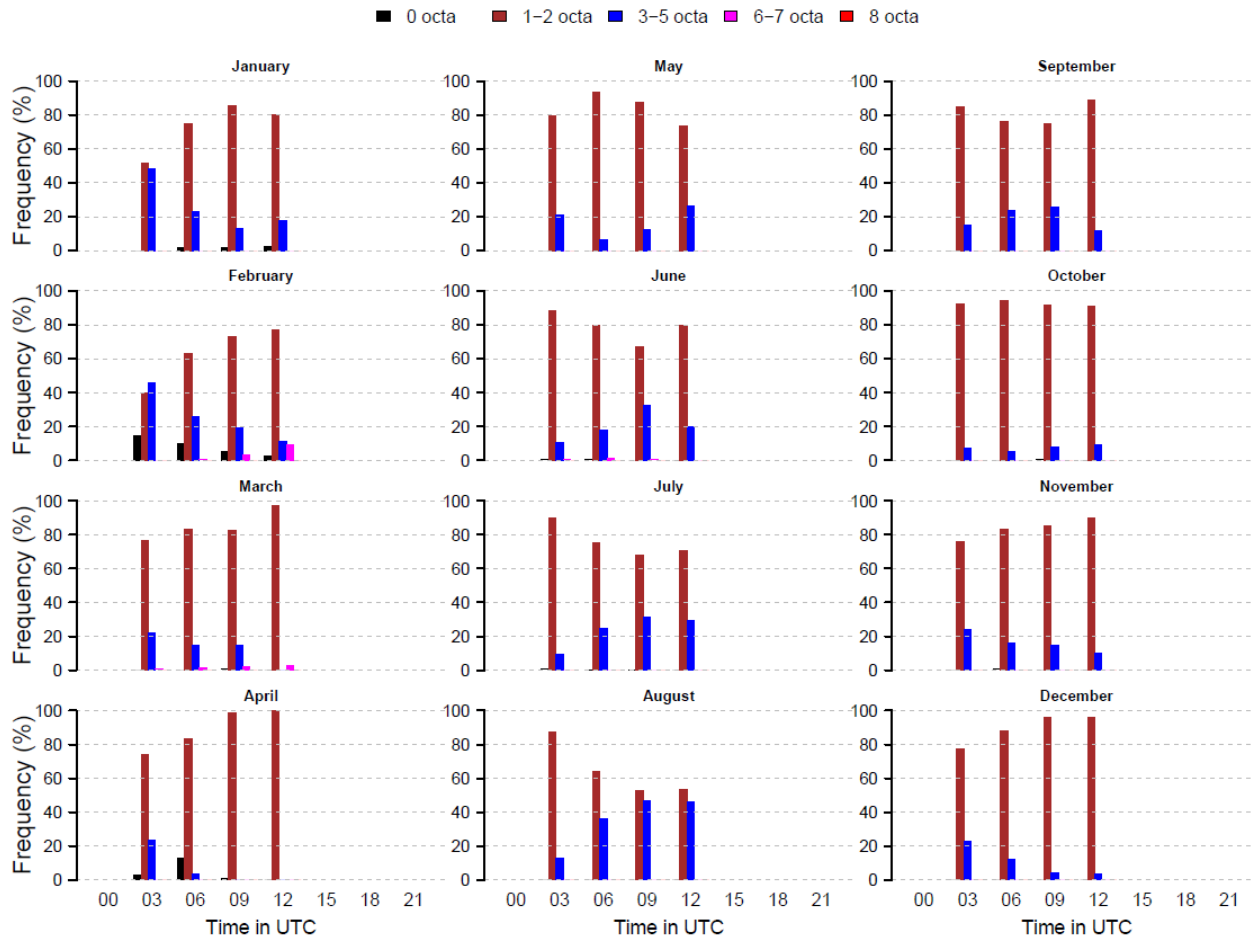
TABLE : VI

TABLE: Mean daily atmospheric pressure (hPa) at mean sea level (msl) at standard times of synoptic observation (UTC).

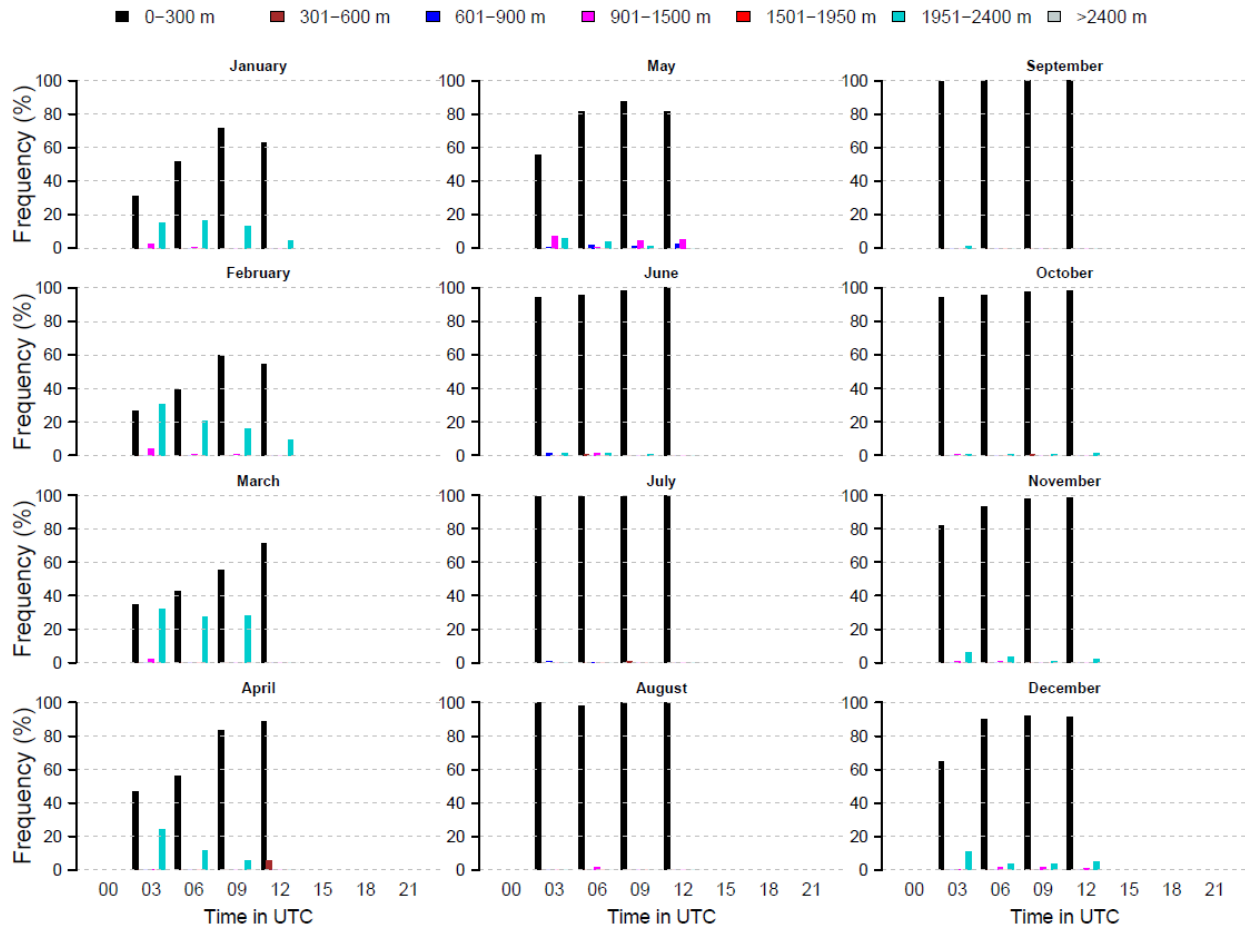
DATE	0000	0300	0600	1200	1800
1		0999.0	0997.9	0994.9	
2		0998.7	0997.6	0994.7	
3		0998.3	0997.8	0995.6	
4		0997.8	0997.1	0996.0	
5		0997.7	0997.0	0995.7	
6		0997.8	0997.8	0998.1	
7		0998.2	0997.3	0995.7	
8		0998.8	0997.8	0996.5	
9		0999.0	0998.0	0998.0	
10		0999.7	0999.1	0995.5	
11		0999.8	0998.5	0994.4	
12		0998.4	0999.1	0994.9	
13		0999.9	0999.2	0996.4	
14		0999.7	0999.3	0997.0	
15		1000.5	0999.7	0997.2	
16		1001.2	1000.0	0996.9	
17		1001.1	1000.2	0995.6	
18		1001.4	1000.9	0998.3	
19		1001.7	1000.7	0997.7	
20		1002.0	1000.5	0996.0	
21		1001.6	1000.3	0996.8	
22		1000.3	0999.4	0996.2	
23		0999.6	0999.0	0995.7	
24		0999.6	0998.9	0995.5	
25		0999.8	0999.0	0996.4	
26		0999.9	0999.3	0995.6	
27		1000.3	0998.8	0995.2	
28		1000.4	0999.1	0996.5	
29		1000.3	0999.2	0996.7	
30		1001.7	1000.0	0998.0	
31		1001.0	1000.1	0994.6	
MEAN		0999.8	0999.0	0996.2	

DIAGRAMS

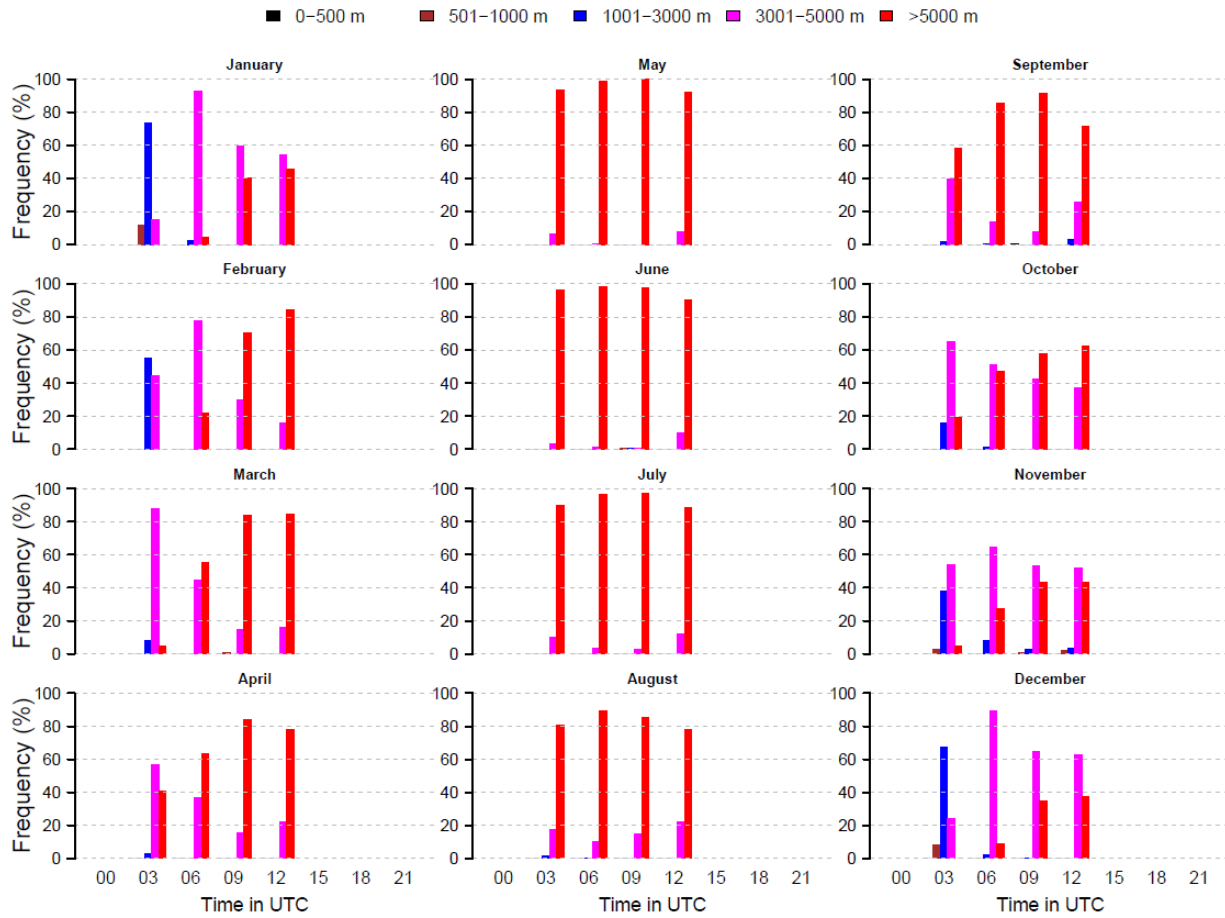
Frequency of Low cloud amount



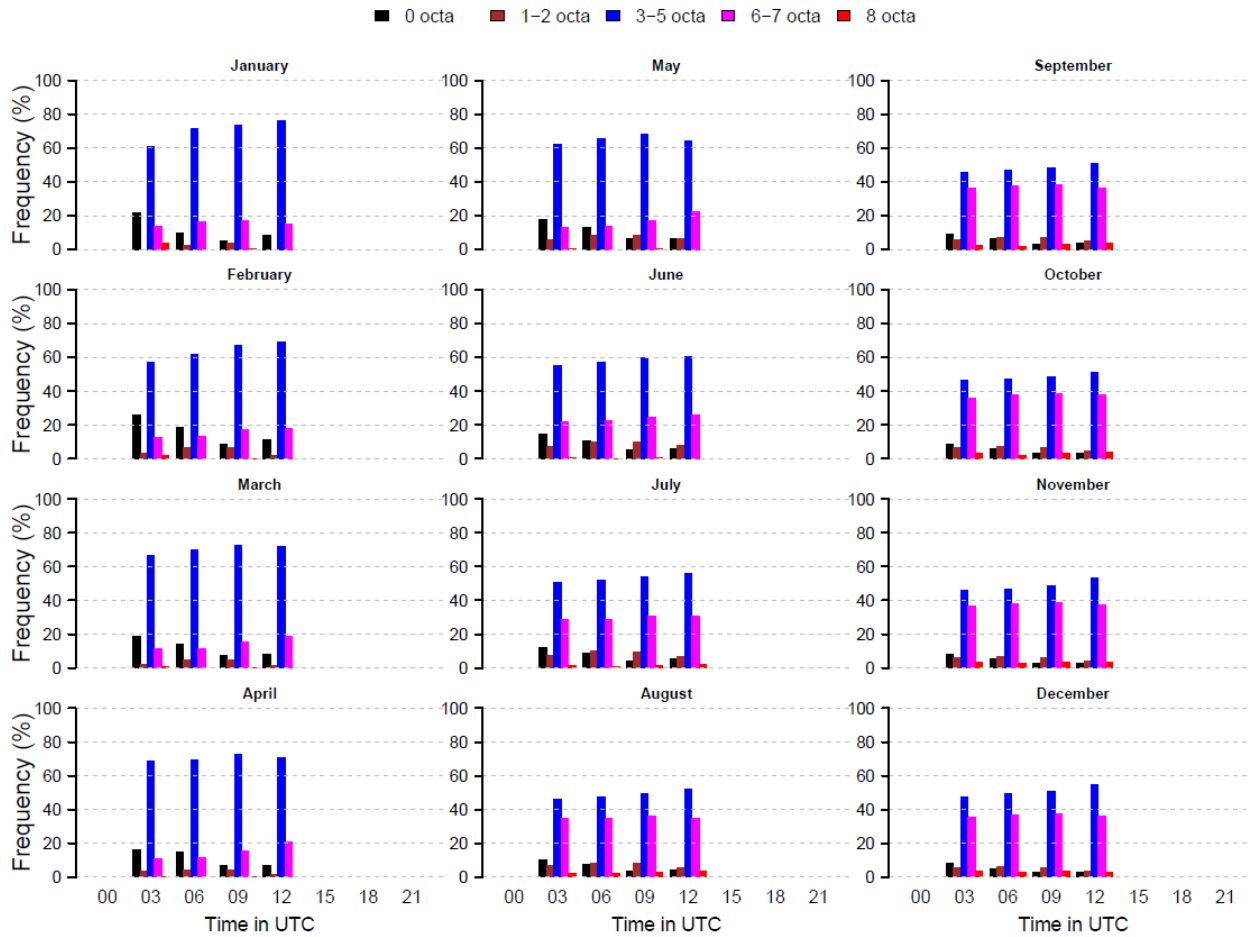
Frequency of Height of Low cloud



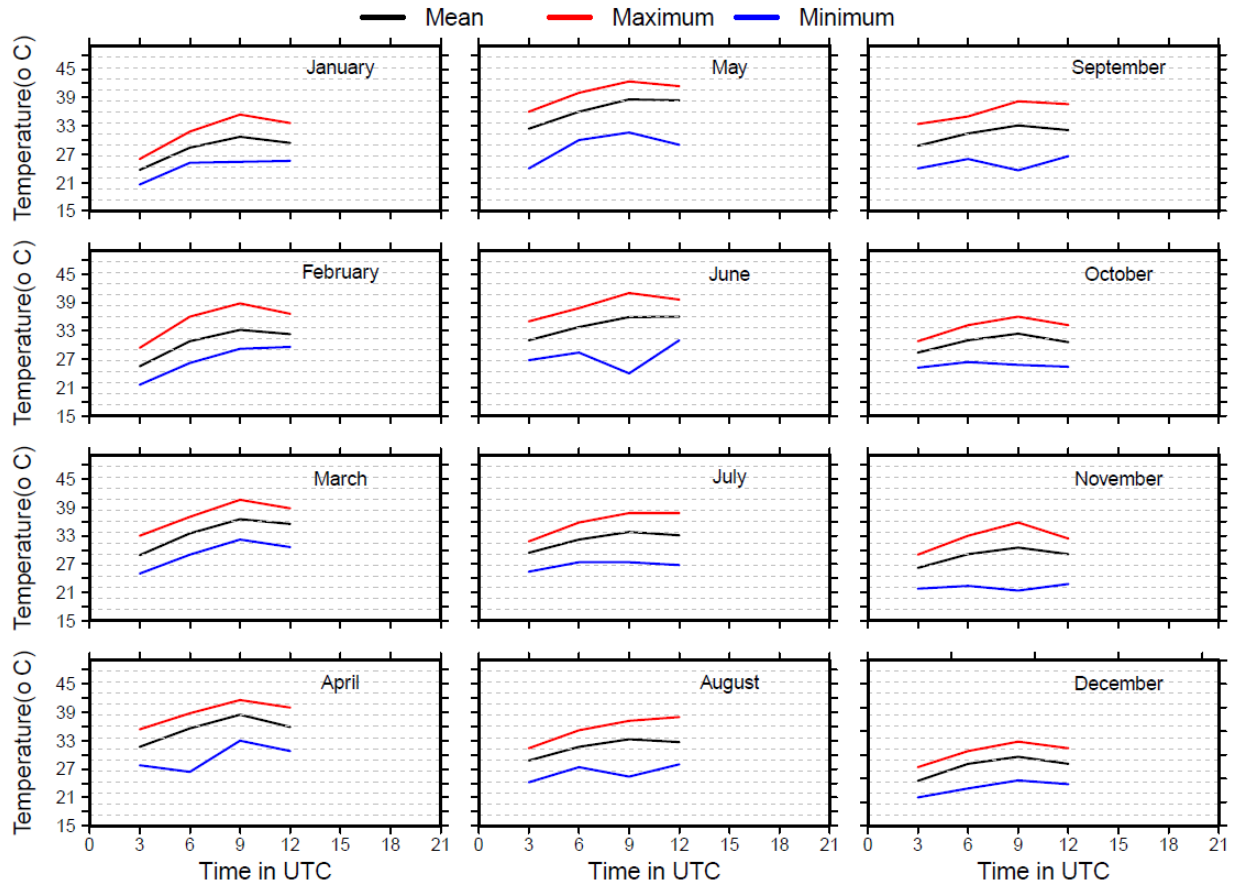
Frequency of Visibility



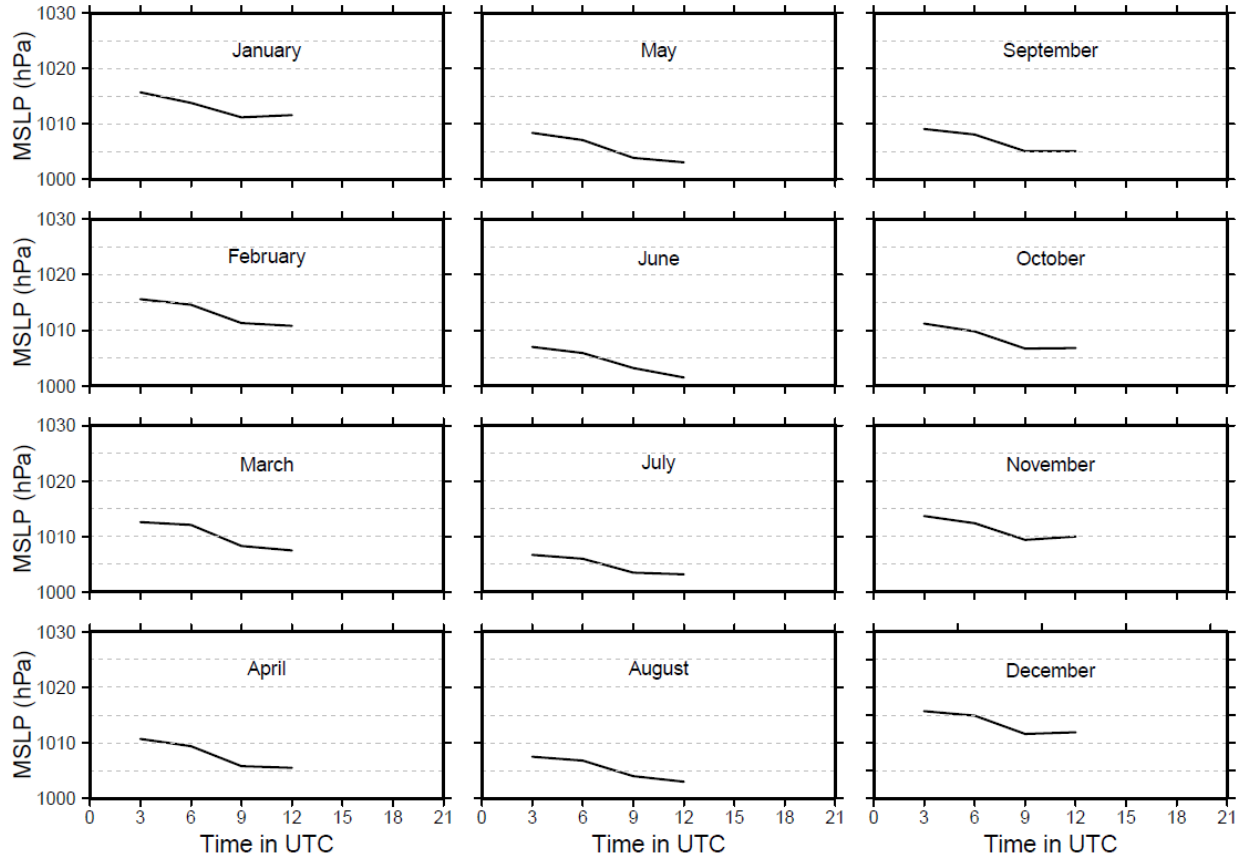
Frequency of Total Cloud Amount



Diurnal variation of Temperature



Diurnal variation of Mean Sea Level Pressure



Diurnal variation of Station Level Pressure

