



2019-2023

AERODROME CLIMATOLOGICAL SUMMARIES

KANGRA

AIRPORT

GAGGAL

OFFICE OF CLIMATE RESEARCH & SERVICES
INDIA METEOROLOGICAL DEPARTMENT

2024



PREFACE

The aviation industry in India has emerged as one of the fastest growing industries in the country during the last three years. India is currently considered the third largest domestic civil aviation market in the world. Same time meteorological information plays an essential role for all sectors of the Aviation industry - airlines, airports, air traffic control and management for taking correct and timely decisions that makes navigation safe, efficient and cost effective.

Aircrafts fly in the atmosphere where most of the weather systems develop and decay. Information of important meteorological parameters related to the safety of aircraft such as atmospheric Pressure, Temperature, Wind direction and speed, Visibility, Runway Visual Range (RVR) and Cloud Height are needed for smooth operations of an aircraft from take off to the landing phase. It is therefore very essential that climatology of an airport is available as a ready reckoner to understand mean number of occurrences (frequencies) of various weather elements in different temporal scales which affect aircraft operations round the clock. Aeronautical Climatological Summary of an Airport provides this vital information. Aeronautical Climatological Summaries for various National and International Airports are being prepared and updated at regular interval. The publication is prepared on the pattern of WMO Models A, B, C, D, E and Table VI in accordance with the procedures laid down in Technical Regulations as per International Civil Aviation Organization (ICAO) standards. The details of these models are given in Appendix-1. The present publication has been prepared for **Kangra Airport, Gaggal** (Latitude 32° 06'N, Longitude 76° 16'E and Altitude 770m) using the meteorological data for the period **2019-2023**.

The successful publication of this report is achieved by valuable guidance and suggestions by Sh. Vipin Sharma, Met-A, officer-in-charge, AMS Kangra and Contributions towards quality of work by Smt. Shailza Kaundal, SA. The keying in of huge volume of data were made by Sh. Vipin Sharma, Met-A and Smt. Shailza Kaundal, SA.

The entire work of this publication has been done by a group of officers and staff members led by Dr Sudeep Kumar. B. L, Scientist D, under the guidance of Shri. A.D. Tathe, Scientist F & Head, Climate Data Management and Services (CDMS) Group. Valuable contributions were made by Shri. S. H. Bhagwat, Met. B, Shri. S. S. Khedkar, Met. A, Shri S. H. Sangale Met. A, Shri Pradeep Rajmane, Met. B and Smt. Reshma Pathan, Met. A. towards preparation of the summaries. I appreciate the help rendered by the entire team.

I am hopeful that this publication will serve as a source of useful information to aviation services.

K. S. Hosalikar
Head CRS

CONTENTS

Sn	Model name	Description	Pages
1	<u>MODEL - A</u>	Runway Visual Range or Visibility and/or the height of the base of lowest cloud layer	1 - 12
2	<u>MODEL - B</u>	Visibility	13 - 24
3	<u>MODEL - C</u>	Height of base of the lowest cloud	25 - 36
4	<u>MODEL - D</u>	Wind direction and wind speed	37 - 132
5	<u>MODEL - E</u>	Temperature	133 - 144
6	<u>TABLE - VI</u>	Atmospheric pressure	145 - 156
7	<u>DIAGRAMS</u>	Low cloud, total cloud, Visibility, Pressure and Temperature	157 - 163

DESCRIPTION OF MODELS

Model type	Description
MODEL A	Monthly mean number of occurrences of runway visual range / visibility and/or the height of the base of lowest cloud layer (in metres), covering more than 4/8 th of the sky below specified values at the specified time.
MODEL B	Monthly mean number of visibility below specified values (in metres) at the specified time.
MODEL C	Monthly mean number of occurrences of the height of the base (in metres) of the lowest cloud layer covering more than 4/8th of the sky below specified values at the specified time.
MODEL D	Monthly mean number of occurrences of concurrent wind direction (30 degree sector) and wind speed (knots) within specified ranges.
MODEL E	Monthly mean number of occurrences of surface (screen) temperature (°C) in ranges of 5 degrees of the specified time.
TABLE VI	Monthly mean atmospheric pressure (hPa) at the reference level / mean sea level (for low level stations) at standard times for surface synoptic observations.

THE TERMS USED IN PUBLICATION WITH DESCRIPTION AND ITS UNITS.

S.N.	Terms	Description and Units
1	Time	Time of observation in universal time coordinated (UTC).
2	HS	The height of base of lowest cloud layer covering more than 4/8 of the sky (metres).
3	Visibility	Horizontal visibility (metres).
4	RVR	Runway Visual Range (metres).
5	Wind Direction	Direction of wind from true north (degrees).
6	Wind speed	The speed of wind(knots).
7	Pressure	Mean sea level pressure (hPa).
8	Temperature	Screen temperatures (Degree Celsius).

MONTH: JANUARY

MODEL : A

Table: Mean number of occurrences of Runway Visual Range or Visibility and/or the height of the base of lowest cloud layer covering more than 4/8 th of the sky (HS), below specified values and time.

Time UTC	Runway Visual Range OR Visibility / HS (metres)								
	VIS<100	<200	<400	<800	<1500	<1500	<3000	<8000	TOTAL
	HS		<30	<60	<90	<150	<300	<600	
0									
1									
2									
3									
4									
5									
6									
7									
8									
9									
10									
11									
12									
13									
14									
15									
16									
17									
18									
19									
20									
21									
22									
23									
TOTAL									

MONTH: FEBRUARY

MODEL: A

Table: Mean number of occurrences of Runway Visual Range or Visibility and/or the height of the base of lowest cloud layer covering more than 4/8 th of the sky (HS), below specified values and time.

Time UTC	Runway Visual Range OR Visibility / HS (metres)								
	VIS<100	<200	<400	<800	<1500	<1500	<3000	<8000	TOTAL
	HS		<30	<60	<90	<150	<300	<600	
0									
1								27.0	27.0
2								27.0	27.0
3								27.0	27.0
4								28.0	28.0
5								27.0	27.0
6								28.0	28.0
7								28.0	28.0
8								28.0	28.0
9								28.0	28.0
10								28.0	28.0
11								28.0	28.0
12								28.0	28.0
13									
14									
15									
16									
17									
18									
19									
20									
21									
22									
23									
TOTAL								332.0	332.0

MONTH: MARCH

MODEL: A

Table: Mean number of occurrences of Runway Visual Range or Visibility and/or the height of the base of lowest cloud layer covering more than 4/8 th of the sky (HS), below specified values and time.

Time UTC	Runway Visual Range OR Visibility / HS (metres)								
	VIS<100	<200	<400	<800	<1500	<1500	<3000	<8000	TOTAL
	HS		<30	<60	<90	<150	<300	<600	
0									
1								31.0	31.0
2								30.0	30.0
3								31.0	31.0
4								30.0	30.0
5								31.0	31.0
6								30.0	30.0
7								31.0	31.0
8								31.0	31.0
9								31.0	31.0
10								31.0	31.0
11								30.0	30.0
12								31.0	31.0
13									
14									
15									
16									
17									
18									
19									
20									
21									
22									
23									
TOTAL								368.0	368.0

MONTH: APRIL

MODEL: A

Table: Mean number of occurrences of Runway Visual Range or Visibility and/or the height of the base of lowest cloud layer covering more than 4/8 th of the sky (HS), below specified values and time.

Time UTC	Runway Visual Range OR Visibility / HS (metres)								
	VIS<100	<200	<400	<800	<1500	<1500	<3000	<8000	TOTAL
	HS		<30	<60	<90	<150	<300	<600	
0									
1								21.0	21.0
2								20.0	20.0
3								20.0	20.0
4								20.0	20.0
5								20.0	20.0
6								20.0	20.0
7								19.0	19.0
8								20.0	20.0
9								20.0	20.0
10								20.0	20.0
11								21.0	21.0
12								21.0	21.0
13									
14									
15								1.0	1.0
16									
17									
18									
19									
20									
21									
22									
23									
TOTAL								243.0	243.0

MONTH: MAY

MODEL: A

Table: Mean number of occurrences of Runway Visual Range or Visibility and/or the height of the base of lowest cloud layer covering more than 4/8 th of the sky (HS), below specified values and time.

Time UTC	Runway Visual Range OR Visibility / HS (metres)								
	VIS<100	<200	<400	<800	<1500	<1500	<3000	<8000	TOTAL
	HS		<30	<60	<90	<150	<300	<600	
0									
1								31.0	31.0
2								27.0	27.0
3								31.0	31.0
4								30.0	30.0
5								30.0	30.0
6								30.0	30.0
7								31.0	31.0
8								31.0	31.0
9								31.0	31.0
10								31.0	31.0
11								31.0	31.0
12								31.0	31.0
13									
14									
15									
16									
17								1.0	1.0
18								1.0	1.0
19									
20									
21									
22									
23									
TOTAL								367.0	367.0

MONTH: JUNE

MODEL: A

Table: Mean number of occurrences of Runway Visual Range or Visibility and/or the height of the base of lowest cloud layer covering more than 4/8 th of the sky (HS), below specified values and time.

Time UTC	Runway Visual Range OR Visibility / HS (metres)								
	VIS<100	<200	<400	<800	<1500	<1500	<3000	<8000	TOTAL
	HS		<30	<60	<90	<150	<300	<600	
0									
1							1.0	28.0	29.0
2								29.0	29.0
3								30.0	30.0
4								30.0	30.0
5								30.0	30.0
6								30.0	30.0
7								30.0	30.0
8								30.0	30.0
9								30.0	30.0
10								30.0	30.0
11								30.0	30.0
12								30.0	30.0
13									
14									
15									
16									
17									
18									
19									
20									
21									
22									
23									
TOTAL							1.0	357.0	358.0

MONTH: JULY

MODEL: A

Table: Mean number of occurrences of Runway Visual Range or Visibility and/or the height of the base of lowest cloud layer covering more than 4/8 th of the sky (HS), below specified values and time.

Time UTC	Runway Visual Range OR Visibility / HS (metres)								
	VIS<100	<200	<400	<800	<1500	<1500	<3000	<8000	TOTAL
	HS		<30	<60	<90	<150	<300	<600	
0									
1							1.0	28.0	29.0
2							1.0	30.0	31.0
3							1.0	30.0	31.0
4							2.0	29.0	31.0
5								31.0	31.0
6							1.0	30.0	31.0
7							1.0	30.0	31.0
8							1.0	30.0	31.0
9								31.0	31.0
10								31.0	31.0
11								30.0	30.0
12								31.0	31.0
13									
14									
15									
16									
17									
18									
19									
20									
21									
22									
23									
TOTAL							8.0	361.0	369.0

MONTH: AUGUST

MODEL: A

Table: Mean number of occurrences of Runway Visual Range or Visibility and/or the height of the base of lowest cloud layer covering more than 4/8 th of the sky (HS), below specified values and time.

Time UTC	Runway Visual Range OR Visibility / HS (metres)								
	VIS<100	<200	<400	<800	<1500	<1500	<3000	<8000	TOTAL
	HS		<30	<60	<90	<150	<300	<600	
0									
1							2.0	29.0	31.0
2							2.0	29.0	31.0
3							3.0	28.0	31.0
4							2.0	29.0	31.0
5							1.0	30.0	31.0
6								31.0	31.0
7								31.0	31.0
8								31.0	31.0
9								29.0	29.0
10								29.0	29.0
11								29.0	29.0
12								29.0	29.0
13									
14									
15									
16									
17									
18									
19									
20									
21									
22									
23									
TOTAL							10.0	354.0	364.0

MONTH: SEPTEMBER

MODEL: A

Table: Mean number of occurrences of Runway Visual Range or Visibility and/or the height of the base of lowest cloud layer covering more than 4/8 th of the sky (HS), below specified values and time.

Time UTC	Runway Visual Range OR Visibility / HS (metres)								
	VIS<100	<200	<400	<800	<1500	<1500	<3000	<8000	TOTAL
	HS		<30	<60	<90	<150	<300	<600	
0									
1								28.0	28.0
2								27.0	27.0
3								29.0	29.0
4								27.0	27.0
5								27.0	27.0
6								27.0	27.0
7								25.0	25.0
8								23.0	23.0
9								25.0	25.0
10								26.0	26.0
11								25.0	25.0
12								25.0	25.0
13								1.0	1.0
14									
15									
16									
17									
18									
19									
20									
21									
22									
23									
TOTAL								315.0	315.0

MONTH: OCTOBER

MODEL: A

Table: Mean number of occurrences of Runway Visual Range or Visibility and/or the height of the base of lowest cloud layer covering more than 4/8 th of the sky (HS), below specified values and time.

Time UTC	Runway Visual Range OR Visibility / HS (metres)								
	VIS<100	<200	<400	<800	<1500	<1500	<3000	<8000	TOTAL
	HS		<30	<60	<90	<150	<300	<600	
0									
1								31.0	31.0
2								30.0	30.0
3								30.0	30.0
4								30.0	30.0
5								30.0	30.0
6								28.0	28.0
7								29.0	29.0
8								29.0	29.0
9								29.0	29.0
10								29.0	29.0
11								28.0	28.0
12								29.0	29.0
13									
14									
15									
16									
17									
18									
19									
20									
21									
22									
23									
TOTAL								352.0	352.0

MONTH: NOVEMBER

MODEL: A

Table: Mean number of occurrences of Runway Visual Range or Visibility and/or the height of the base of lowest cloud layer covering more than 4/8 th of the sky (HS), below specified values and time.

Time UTC	Runway Visual Range OR Visibility / HS (metres)								
	VIS<100	<200	<400	<800	<1500	<1500	<3000	<8000	TOTAL
	HS		<30	<60	<90	<150	<300	<600	
0									
1								30.0	30.0
2								30.0	30.0
3								30.0	30.0
4								29.0	29.0
5								29.0	29.0
6								30.0	30.0
7								30.0	30.0
8								29.0	29.0
9								30.0	30.0
10								30.0	30.0
11								30.0	30.0
12								29.0	29.0
13									
14									
15									
16									
17									
18									
19									
20									
21									
22									
23									
TOTAL								356.0	356.0

MONTH: DECEMBER

MODEL: A

Table: Mean number of occurrences of Runway Visual Range or Visibility and/or the height of the base of lowest cloud layer covering more than 4/8 th of the sky (HS), below specified values and time.

Time UTC	Runway Visual Range OR Visibility / HS (metres)								
	VIS<100	<200	<400	<800	<1500	<1500	<3000	<8000	TOTAL
	HS		<30	<60	<90	<150	<300	<600	
0									
1									
2									
3									
4									
5									
6									
7									
8									
9									
10									
11									
12									
13									
14									
15									
16									
17									
18									
19									
20									
21									
22									
23									
TOTAL									

MONTH : JANUARY

MODEL : B

TABLE: Mean number of occurrences of visibility below specified values and time.

Time UTC	VISIBILITY (metres)								
	<200	<400	<600	<800	<1500	<3000	<5000	<8000	TOTAL
0									
1									
2									
3									
4									
5									
6									
7									
8									
9									
10									
11									
12									
13									
14									
15									
16									
17									
18									
19									
20									
21									
22									
23									
TOTAL									

MONTH : FEBRUARY

MODEL : B

TABLE: Mean number of occurrences of visibility below specified values and time.

Time UTC	VISIBILITY (metres)								
	<200	<400	<600	<800	<1500	<3000	<5000	<8000	TOTAL
0									
1								27.0	27.0
2							1.0	26.0	27.0
3								27.0	27.0
4								28.0	28.0
5								27.0	27.0
6								28.0	28.0
7								28.0	28.0
8								28.0	28.0
9								28.0	28.0
10								28.0	28.0
11								28.0	28.0
12							1.0	27.0	28.0
13									
14									
15									
16									
17									
18									
19									
20									
21									
22									
23									
TOTAL							2.0	330.0	332.0

MONTH : MARCH

MODEL : B

TABLE: Mean number of occurrences of visibility below specified values and time.

Time UTC	VISIBILITY (metres)								
	<200	<400	<600	<800	<1500	<3000	<5000	<8000	TOTAL
0									
1							3.0	28.0	31.0
2							1.0	29.0	30.0
3							1.0	30.0	31.0
4							1.0	29.0	30.0
5								31.0	31.0
6							1.0	29.0	30.0
7								31.0	31.0
8							1.0	30.0	31.0
9								31.0	31.0
10								31.0	31.0
11								30.0	30.0
12								31.0	31.0
13									
14									
15									
16									
17									
18									
19									
20									
21									
22									
23									
TOTAL							8.0	360.0	368.0

MONTH : APRIL

MODEL : B

TABLE: Mean number of occurrences of visibility below specified values and time.

Time UTC	VISIBILITY (metres)								
	<200	<400	<600	<800	<1500	<3000	<5000	<8000	TOTAL
0									
1							1.0	20.0	21.0
2								20.0	20.0
3								20.0	20.0
4								20.0	20.0
5								20.0	20.0
6								20.0	20.0
7								19.0	19.0
8								20.0	20.0
9								20.0	20.0
10								20.0	20.0
11								21.0	21.0
12								21.0	21.0
13									
14									
15								1.0	1.0
16									
17									
18									
19									
20									
21									
22									
23									
TOTAL							1.0	242.0	243.0

MONTH : MAY

MODEL : B

TABLE: Mean number of occurrences of visibility below specified values and time.

Time UTC	VISIBILITY (metres)								
	<200	<400	<600	<800	<1500	<3000	<5000	<8000	TOTAL
0									
1							1.0	30.0	31.0
2								27.0	27.0
3								31.0	31.0
4								30.0	30.0
5								30.0	30.0
6								30.0	30.0
7								31.0	31.0
8							1.0	30.0	31.0
9								31.0	31.0
10								31.0	31.0
11							1.0	30.0	31.0
12							1.0	30.0	31.0
13									
14									
15									
16									
17								1.0	1.0
18								1.0	1.0
19									
20									
21									
22									
23									
TOTAL							4.0	363.0	367.0

MONTH : JUNE

MODEL : B

TABLE: Mean number of occurrences of visibility below specified values and time.

Time UTC	VISIBILITY (metres)								
	<200	<400	<600	<800	<1500	<3000	<5000	<8000	TOTAL
0									
1						1.0		28.0	29.0
2								29.0	29.0
3								30.0	30.0
4							1.0	29.0	30.0
5								30.0	30.0
6								30.0	30.0
7								30.0	30.0
8								30.0	30.0
9							1.0	29.0	30.0
10							2.0	28.0	30.0
11							2.0	28.0	30.0
12							1.0	29.0	30.0
13									
14									
15									
16									
17									
18									
19									
20									
21									
22									
23									
TOTAL						1.0	7.0	350.0	358.0

MONTH : JULY

MODEL : B

TABLE: Mean number of occurrences of visibility below specified values and time.

Time UTC	VISIBILITY (metres)								
	<200	<400	<600	<800	<1500	<3000	<5000	<8000	TOTAL
0									
1						1.0	5.0	23.0	29.0
2						1.0	5.0	25.0	31.0
3						1.0	4.0	26.0	31.0
4						2.0	4.0	25.0	31.0
5							4.0	27.0	31.0
6						1.0	2.0	28.0	31.0
7						1.0	3.0	27.0	31.0
8						1.0	2.0	28.0	31.0
9							4.0	27.0	31.0
10							4.0	27.0	31.0
11							3.0	27.0	30.0
12							2.0	29.0	31.0
13									
14									
15									
16									
17									
18									
19									
20									
21									
22									
23									
TOTAL						8.0	42.0	319.0	369.0

MONTH : AUGUST

MODEL : B

TABLE: Mean number of occurrences of visibility below specified values and time.

Time UTC	VISIBILITY (metres)								
	<200	<400	<600	<800	<1500	<3000	<5000	<8000	TOTAL
0									
1						2.0	10.0	19.0	31.0
2						2.0	9.0	20.0	31.0
3						3.0	5.0	23.0	31.0
4						2.0	2.0	27.0	31.0
5						1.0	3.0	27.0	31.0
6							2.0	29.0	31.0
7								31.0	31.0
8								31.0	31.0
9								29.0	29.0
10							1.0	28.0	29.0
11							3.0	26.0	29.0
12							4.0	25.0	29.0
13									
14									
15									
16									
17									
18									
19									
20									
21									
22									
23									
TOTAL						10.0	39.0	315.0	364.0

MONTH : SEPTEMBER

MODEL : B

TABLE: Mean number of occurrences of visibility below specified values and time.

Time UTC	VISIBILITY (metres)								
	<200	<400	<600	<800	<1500	<3000	<5000	<8000	TOTAL
0									
1							5.0	23.0	28.0
2							2.0	25.0	27.0
3							2.0	27.0	29.0
4							1.0	26.0	27.0
5								27.0	27.0
6								27.0	27.0
7								25.0	25.0
8							1.0	22.0	23.0
9								25.0	25.0
10								26.0	26.0
11								25.0	25.0
12								25.0	25.0
13								1.0	1.0
14									
15									
16									
17									
18									
19									
20									
21									
22									
23									
TOTAL							11.0	304.0	315.0

MONTH : OCTOBER

MODEL : B

TABLE: Mean number of occurrences of visibility below specified values and time.

Time UTC	VISIBILITY (metres)								
	<200	<400	<600	<800	<1500	<3000	<5000	<8000	TOTAL
0									
1								31.0	31.0
2								30.0	30.0
3								30.0	30.0
4								30.0	30.0
5							1.0	29.0	30.0
6							1.0	27.0	28.0
7								29.0	29.0
8								29.0	29.0
9								29.0	29.0
10								29.0	29.0
11								28.0	28.0
12								29.0	29.0
13									
14									
15									
16									
17									
18									
19									
20									
21									
22									
23									
TOTAL							2.0	350.0	352.0

MONTH : NOVEMBER

MODEL : B

TABLE: Mean number of occurrences of visibility below specified values and time.

Time UTC	VISIBILITY (metres)								
	<200	<400	<600	<800	<1500	<3000	<5000	<8000	TOTAL
0									
1								30.0	30.0
2								30.0	30.0
3								30.0	30.0
4								29.0	29.0
5							1.0	28.0	29.0
6							1.0	29.0	30.0
7								30.0	30.0
8							1.0	28.0	29.0
9							1.0	29.0	30.0
10							1.0	29.0	30.0
11							1.0	29.0	30.0
12								29.0	29.0
13									
14									
15									
16									
17									
18									
19									
20									
21									
22									
23									
TOTAL							6.0	350.0	356.0

MONTH : DECEMBER

MODEL : B

TABLE: Mean number of occurrences of visibility below specified values and time.

Time UTC	VISIBILITY (metres)								
	<200	<400	<600	<800	<1500	<3000	<5000	<8000	TOTAL
0									
1									
2									
3									
4									
5									
6									
7									
8									
9									
10									
11									
12									
13									
14									
15									
16									
17									
18									
19									
20									
21									
22									
23									
TOTAL									

MONTH : JANUARY

MODEL : C

TABLE: Mean number of occurrences of the height of the base of the lowest cloud layer (metres) covering more than 4/8 of the sky below specified values and time.

Time (UTC)	Height of the base of the lowest cloud layer (metres)						
	<30	<60	<90	<150	<300	<450	TOTAL
0							
1							
2							
3							
4							
5							
6							
7							
8							
9							
10							
11							
12							
13							
14							
15							
16							
17							
18							
19							
20							
21							
22							
23							
TOTAL							

MONTH : FEBRUARY

MODEL : C

TABLE: Mean number of occurrences of the height of the base of the lowest cloud layer (metres) covering more than 4/8 of the sky below specified values and time.

Time (UTC)	Height of the base of the lowest cloud layer (metres)						
	<30	<60	<90	<150	<300	<450	TOTAL
0							
1							
2							
3							
4							
5							
6							
7							
8							
9							
10							
11							
12							
13							
14							
15							
16							
17							
18							
19							
20							
21							
22							
23							
TOTAL							

MONTH : MARCH

MODEL : C

TABLE: Mean number of occurrences of the height of the base of the lowest cloud layer (metres) covering more than 4/8 of the sky below specified values and time.

Time (UTC)	Height of the base of the lowest cloud layer (metres)						
	<30	<60	<90	<150	<300	<450	TOTAL
0							
1							
2							
3							
4							
5							
6							
7							
8							
9							
10							
11							
12							
13							
14							
15							
16							
17							
18							
19							
20							
21							
22							
23							
TOTAL							

MONTH : APRIL

MODEL : C

TABLE: Mean number of occurrences of the height of the base of the lowest cloud layer (metres) covering more than 4/8 of the sky below specified values and time.

Time (UTC)	Height of the base of the lowest cloud layer (metres)						
	<30	<60	<90	<150	<300	<450	TOTAL
0							
1							
2							
3							
4							
5							
6							
7							
8							
9							
10							
11							
12							
13							
14							
15							
16							
17							
18							
19							
20							
21							
22							
23							
TOTAL							

MONTH : MAY

MODEL : C

TABLE: Mean number of occurrences of the height of the base of the lowest cloud layer (metres) covering more than 4/8 of the sky below specified values and time.

Time (UTC)	Height of the base of the lowest cloud layer (metres)						
	<30	<60	<90	<150	<300	<450	TOTAL
0							
1							
2							
3							
4							
5							
6							
7							
8							
9							
10							
11							
12							
13							
14							
15							
16							
17							
18							
19							
20							
21							
22							
23							
TOTAL							

MONTH : JUNE

MODEL : C

TABLE: Mean number of occurrences of the height of the base of the lowest cloud layer (metres) covering more than 4/8 of the sky below specified values and time.

Time (UTC)	Height of the base of the lowest cloud layer (metres)						
	<30	<60	<90	<150	<300	<450	TOTAL
0							
1							
2							
3							
4							
5							
6							
7							
8							
9							
10							
11							
12							
13							
14							
15							
16							
17							
18							
19							
20							
21							
22							
23							
TOTAL							

MONTH : JULY

MODEL : C

TABLE: Mean number of occurrences of the height of the base of the lowest cloud layer (metres) covering more than 4/8 of the sky below specified values and time.

Time (UTC)	Height of the base of the lowest cloud layer (metres)						
	<30	<60	<90	<150	<300	<450	TOTAL
0							
1							
2							
3							
4							
5							
6							
7							
8							
9							
10							
11							
12							
13							
14							
15							
16							
17							
18							
19							
20							
21							
22							
23							
TOTAL							

MONTH : AUGUST

MODEL : C

TABLE: Mean number of occurrences of the height of the base of the lowest cloud layer (metres) covering more than 4/8 of the sky below specified values and time.

Time (UTC)	Height of the base of the lowest cloud layer (metres)						
	<30	<60	<90	<150	<300	<450	TOTAL
0							
1							
2							
3							
4							
5							
6							
7							
8							
9							
10							
11							
12							
13							
14							
15							
16							
17							
18							
19							
20							
21							
22							
23							
TOTAL							

MONTH : SEPTEMBER

MODEL : C

TABLE: Mean number of occurrences of the height of the base of the lowest cloud layer (metres) covering more than 4/8 of the sky below specified values and time.

Time (UTC)	Height of the base of the lowest cloud layer (metres)						
	<30	<60	<90	<150	<300	<450	TOTAL
0							
1							
2							
3							
4							
5							
6							
7							
8							
9							
10							
11							
12							
13							
14							
15							
16							
17							
18							
19							
20							
21							
22							
23							
TOTAL							

MONTH : OCTOBER

MODEL : C

TABLE: Mean number of occurrences of the height of the base of the lowest cloud layer (metres) covering more than 4/8 of the sky below specified values and time.

Time (UTC)	Height of the base of the lowest cloud layer (metres)						
	<30	<60	<90	<150	<300	<450	TOTAL
0							
1							
2							
3							
4							
5							
6							
7							
8							
9							
10							
11							
12							
13							
14							
15							
16							
17							
18							
19							
20							
21							
22							
23							
TOTAL							

MONTH : NOVEMBER

MODEL : C

TABLE: Mean number of occurrences of the height of the base of the lowest cloud layer (metres) covering more than 4/8 of the sky below specified values and time.

Time (UTC)	Height of the base of the lowest cloud layer (metres)						
	<30	<60	<90	<150	<300	<450	TOTAL
0							
1							
2							
3							
4							
5							
6							
7							
8							
9							
10							
11							
12							
13							
14							
15							
16							
17							
18							
19							
20							
21							
22							
23							
TOTAL							

MONTH : DECEMBER

MODEL : C

TABLE: Mean number of occurrences of the height of the base of the lowest cloud layer (metres) covering more than 4/8 of the sky below specified values and time.

Time (UTC)	Height of the base of the lowest cloud layer (metres)						
	<30	<60	<90	<150	<300	<450	TOTAL
0							
1							
2							
3							
4							
5							
6							
7							
8							
9							
10							
11							
12							
13							
14							
15							
16							
17							
18							
19							
20							
21							
22							
23							
TOTAL							

MONTH : JANUARY

TIME : 0 UTC

MODEL : D

TABLE: Mean number of occurrences of concurrent wind direction (in 30 degree sector) and wind speed in specified ranges.

Wind Direction in tens of degree	WIND SPEED (KNOTS)												
	0	1 TO 5	6 TO 10	11 TO 15	16 TO 20	21 TO 25	26 TO 30	31 TO 35	36 TO 40	41 TO 45	46 TO 50	> 50	TOTAL
Calm													
Variable													
35-36-01													
02-03-04													
05-06-07													
08-09-10													
11-12-13													
14-15-16													
17-18-19													
20-21-22													
23-24-25													
26-27-28													
29-30-31													
32-33-34													
TOTAL													0

MONTH : JANUARY

TIME : 3 UTC

MODEL : D

TABLE: Mean number of occurrences of concurrent wind direction (in 30 degree sector) and wind speed in specified ranges.

Wind Direction in tens of degree	WIND SPEED (KNOTS)												
	0	1 TO 5	6 TO 10	11 TO 15	16 TO 20	21 TO 25	26 TO 30	31 TO 35	36 TO 40	41 TO 45	46 TO 50	> 50	TOTAL
Calm													
Variable													
35-36-01													
02-03-04													
05-06-07													
08-09-10													
11-12-13													
14-15-16													
17-18-19													
20-21-22													
23-24-25													
26-27-28													
29-30-31													
32-33-34													
TOTAL													0

MONTH : JANUARY

TIME : 6 UTC

MODEL : D

TABLE: Mean number of occurrences of concurrent wind direction (in 30 degree sector) and wind speed in specified ranges.

Wind Direction in tens of degree	WIND SPEED (KNOTS)												
	0	1 TO 5	6 TO 10	11 TO 15	16 TO 20	21 TO 25	26 TO 30	31 TO 35	36 TO 40	41 TO 45	46 TO 50	> 50	TOTAL
Calm													
Variable													
35-36-01													
02-03-04													
05-06-07													
08-09-10													
11-12-13													
14-15-16													
17-18-19													
20-21-22													
23-24-25													
26-27-28													
29-30-31													
32-33-34													
TOTAL													0

MONTH : JANUARY

TIME : 9 UTC

MODEL : D

TABLE: Mean number of occurrences of concurrent wind direction (in 30 degree sector) and wind speed in specified ranges.

Wind Direction in tens of degree	WIND SPEED (KNOTS)												
	0	1 TO 5	6 TO 10	11 TO 15	16 TO 20	21 TO 25	26 TO 30	31 TO 35	36 TO 40	41 TO 45	46 TO 50	> 50	TOTAL
Calm													
Variable													
35-36-01													
02-03-04													
05-06-07													
08-09-10													
11-12-13													
14-15-16													
17-18-19													
20-21-22													
23-24-25													
26-27-28													
29-30-31													
32-33-34													
TOTAL													0

MONTH : JANUARY

TIME : 12 UTC

MODEL : D

TABLE: Mean number of occurrences of concurrent wind direction (in 30 degree sector) and wind speed in specified ranges.

Wind Direction in tens of degree	WIND SPEED (KNOTS)												
	0	1 TO 5	6 TO 10	11 TO 15	16 TO 20	21 TO 25	26 TO 30	31 TO 35	36 TO 40	41 TO 45	46 TO 50	> 50	TOTAL
Calm													
Variable													
35-36-01													
02-03-04													
05-06-07													
08-09-10													
11-12-13													
14-15-16													
17-18-19													
20-21-22													
23-24-25													
26-27-28													
29-30-31													
32-33-34													
TOTAL													0

MONTH : JANUARY

TIME : 15 UTC

MODEL : D

TABLE: Mean number of occurrences of concurrent wind direction (in 30 degree sector) and wind speed in specified ranges.

Wind Direction in tens of degree	WIND SPEED (KNOTS)												
	0	1 TO 5	6 TO 10	11 TO 15	16 TO 20	21 TO 25	26 TO 30	31 TO 35	36 TO 40	41 TO 45	46 TO 50	> 50	TOTAL
Calm													
Variable													
35-36-01													
02-03-04													
05-06-07													
08-09-10													
11-12-13													
14-15-16													
17-18-19													
20-21-22													
23-24-25													
26-27-28													
29-30-31													
32-33-34													
TOTAL													0

MONTH : JANUARY

TIME : 18 UTC

MODEL : D

TABLE: Mean number of occurrences of concurrent wind direction (in 30 degree sector) and wind speed in specified ranges.

Wind Direction in tens of degree	WIND SPEED (KNOTS)												
	0	1 TO 5	6 TO 10	11 TO 15	16 TO 20	21 TO 25	26 TO 30	31 TO 35	36 TO 40	41 TO 45	46 TO 50	> 50	TOTAL
Calm													
Variable													
35-36-01													
02-03-04													
05-06-07													
08-09-10													
11-12-13													
14-15-16													
17-18-19													
20-21-22													
23-24-25													
26-27-28													
29-30-31													
32-33-34													
TOTAL													0

MONTH : JANUARY

TIME : 21 UTC

MODEL : D

TABLE: Mean number of occurrences of concurrent wind direction (in 30 degree sector) and wind speed in specified ranges.

Wind Direction in tens of degree	WIND SPEED (KNOTS)												
	0	1 TO 5	6 TO 10	11 TO 15	16 TO 20	21 TO 25	26 TO 30	31 TO 35	36 TO 40	41 TO 45	46 TO 50	> 50	TOTAL
Calm													
Variable													
35-36-01													
02-03-04													
05-06-07													
08-09-10													
11-12-13													
14-15-16													
17-18-19													
20-21-22													
23-24-25													
26-27-28													
29-30-31													
32-33-34													
TOTAL													0

MONTH : FEBRUARY

TIME : 0 UTC

MODEL : D

TABLE: Mean number of occurrences of concurrent wind direction (in 30 degree sector) and wind speed in specified ranges.

Wind Direction in tens of degree	WIND SPEED (KNOTS)												
	0	1 TO 5	6 TO 10	11 TO 15	16 TO 20	21 TO 25	26 TO 30	31 TO 35	36 TO 40	41 TO 45	46 TO 50	> 50	TOTAL
Calm													
Variable													
35-36-01													
02-03-04													
05-06-07													
08-09-10													
11-12-13													
14-15-16													
17-18-19													
20-21-22													
23-24-25													
26-27-28													
29-30-31													
32-33-34													
TOTAL													0

MONTH : FEBRUARY

TIME : 3 UTC

MODEL : D

TABLE: Mean number of occurrences of concurrent wind direction (in 30 degree sector) and wind speed in specified ranges.

Wind Direction in tens of degree	WIND SPEED (KNOTS)												
	0	1 TO 5	6 TO 10	11 TO 15	16 TO 20	21 TO 25	26 TO 30	31 TO 35	36 TO 40	41 TO 45	46 TO 50	> 50	TOTAL
Calm	22.0												22.0
Variable													
35-36-01		1.0											1.0
02-03-04		2.0											2.0
05-06-07													
08-09-10													
11-12-13		1.0											1.0
14-15-16		1.0											1.0
17-18-19													
20-21-22													
23-24-25													
26-27-28													
29-30-31													
32-33-34													
TOTAL	22.0	5.0											27

MONTH : FEBRUARY

TIME : 6 UTC

MODEL : D

TABLE: Mean number of occurrences of concurrent wind direction (in 30 degree sector) and wind speed in specified ranges.

Wind Direction in tens of degree	WIND SPEED (KNOTS)												
	0	1 TO 5	6 TO 10	11 TO 15	16 TO 20	21 TO 25	26 TO 30	31 TO 35	36 TO 40	41 TO 45	46 TO 50	> 50	TOTAL
Calm	13.0												13.0
Variable													
35-36-01													
02-03-04													
05-06-07		1.0											1.0
08-09-10		1.0											1.0
11-12-13		2.0											2.0
14-15-16		9.0											9.0
17-18-19													
20-21-22													
23-24-25		2.0											2.0
26-27-28													
29-30-31													
32-33-34													
TOTAL	13.0	15.0											28

MONTH : FEBRUARY

TIME : 9 UTC

MODEL : D

TABLE: Mean number of occurrences of concurrent wind direction (in 30 degree sector) and wind speed in specified ranges.

Wind Direction in tens of degree	WIND SPEED (KNOTS)												
	0	1 TO 5	6 TO 10	11 TO 15	16 TO 20	21 TO 25	26 TO 30	31 TO 35	36 TO 40	41 TO 45	46 TO 50	> 50	TOTAL
Calm	15.0												15.0
Variable													
35-36-01													
02-03-04													
05-06-07													
08-09-10													
11-12-13													
14-15-16		2.0											2.0
17-18-19		1.0											1.0
20-21-22		8.0											8.0
23-24-25		2.0											2.0
26-27-28													
29-30-31													
32-33-34													
TOTAL	15.0	13.0											28

MONTH : FEBRUARY

TIME : 12 UTC

MODEL : D

TABLE: Mean number of occurrences of concurrent wind direction (in 30 degree sector) and wind speed in specified ranges.

Wind Direction in tens of degree	WIND SPEED (KNOTS)												
	0	1 TO 5	6 TO 10	11 TO 15	16 TO 20	21 TO 25	26 TO 30	31 TO 35	36 TO 40	41 TO 45	46 TO 50	> 50	TOTAL
Calm	18.0												18.0
Variable													
35-36-01													
02-03-04													
05-06-07		1.0	1.0										2.0
08-09-10													
11-12-13													
14-15-16		2.0											2.0
17-18-19													
20-21-22		4.0											4.0
23-24-25		1.0											1.0
26-27-28		1.0											1.0
29-30-31													
32-33-34													
TOTAL	18.0	9.0	1.0										28

MONTH : FEBRUARY

TIME : 15 UTC

MODEL : D

TABLE: Mean number of occurrences of concurrent wind direction (in 30 degree sector) and wind speed in specified ranges.

Wind Direction in tens of degree	WIND SPEED (KNOTS)												
	0	1 TO 5	6 TO 10	11 TO 15	16 TO 20	21 TO 25	26 TO 30	31 TO 35	36 TO 40	41 TO 45	46 TO 50	> 50	TOTAL
Calm													
Variable													
35-36-01													
02-03-04													
05-06-07													
08-09-10													
11-12-13													
14-15-16													
17-18-19													
20-21-22													
23-24-25													
26-27-28													
29-30-31													
32-33-34													
TOTAL													0

MONTH : FEBRUARY

TIME : 18 UTC

MODEL : D

TABLE: Mean number of occurrences of concurrent wind direction (in 30 degree sector) and wind speed in specified ranges.

Wind Direction in tens of degree	WIND SPEED (KNOTS)												
	0	1 TO 5	6 TO 10	11 TO 15	16 TO 20	21 TO 25	26 TO 30	31 TO 35	36 TO 40	41 TO 45	46 TO 50	> 50	TOTAL
Calm													
Variable													
35-36-01													
02-03-04													
05-06-07													
08-09-10													
11-12-13													
14-15-16													
17-18-19													
20-21-22													
23-24-25													
26-27-28													
29-30-31													
32-33-34													
TOTAL													0

MONTH : FEBRUARY

TIME : 21 UTC

MODEL : D

TABLE: Mean number of occurrences of concurrent wind direction (in 30 degree sector) and wind speed in specified ranges.

Wind Direction in tens of degree	WIND SPEED (KNOTS)												
	0	1 TO 5	6 TO 10	11 TO 15	16 TO 20	21 TO 25	26 TO 30	31 TO 35	36 TO 40	41 TO 45	46 TO 50	> 50	TOTAL
Calm													
Variable													
35-36-01													
02-03-04													
05-06-07													
08-09-10													
11-12-13													
14-15-16													
17-18-19													
20-21-22													
23-24-25													
26-27-28													
29-30-31													
32-33-34													
TOTAL													0

MONTH : MARCH

TIME : 0 UTC

MODEL : D

TABLE: Mean number of occurrences of concurrent wind direction (in 30 degree sector) and wind speed in specified ranges.

Wind Direction in tens of degree	WIND SPEED (KNOTS)												
	0	1 TO 5	6 TO 10	11 TO 15	16 TO 20	21 TO 25	26 TO 30	31 TO 35	36 TO 40	41 TO 45	46 TO 50	> 50	TOTAL
Calm													
Variable													
35-36-01													
02-03-04													
05-06-07													
08-09-10													
11-12-13													
14-15-16													
17-18-19													
20-21-22													
23-24-25													
26-27-28													
29-30-31													
32-33-34													
TOTAL													0

MONTH : MARCH

TIME : 3 UTC

MODEL : D

TABLE: Mean number of occurrences of concurrent wind direction (in 30 degree sector) and wind speed in specified ranges.

Wind Direction in tens of degree	WIND SPEED (KNOTS)												TOTAL
	0	1 TO 5	6 TO 10	11 TO 15	16 TO 20	21 TO 25	26 TO 30	31 TO 35	36 TO 40	41 TO 45	46 TO 50	> 50	
Calm	28.0												28.0
Variable													
35-36-01													
02-03-04													
05-06-07		1.0											1.0
08-09-10		1.0											1.0
11-12-13		1.0											1.0
14-15-16													
17-18-19													
20-21-22													
23-24-25													
26-27-28													
29-30-31													
32-33-34													
TOTAL	28.0	3.0											31

MONTH : MARCH

TIME : 6 UTC

MODEL : D

TABLE: Mean number of occurrences of concurrent wind direction (in 30 degree sector) and wind speed in specified ranges.

Wind Direction in tens of degree	WIND SPEED (KNOTS)												
	0	1 TO 5	6 TO 10	11 TO 15	16 TO 20	21 TO 25	26 TO 30	31 TO 35	36 TO 40	41 TO 45	46 TO 50	> 50	TOTAL
Calm	16.0												16.0
Variable													
35-36-01		1.0											1.0
02-03-04													
05-06-07		1.0	1.0										2.0
08-09-10													
11-12-13		1.0											1.0
14-15-16		6.0											6.0
17-18-19		1.0											1.0
20-21-22													
23-24-25		2.0											2.0
26-27-28		1.0											1.0
29-30-31													
32-33-34													
TOTAL	16.0	13.0	1.0										30

MONTH : MARCH

TIME : 9 UTC

MODEL : D

TABLE: Mean number of occurrences of concurrent wind direction (in 30 degree sector) and wind speed in specified ranges.

Wind Direction in tens of degree	WIND SPEED (KNOTS)												TOTAL
	0	1 TO 5	6 TO 10	11 TO 15	16 TO 20	21 TO 25	26 TO 30	31 TO 35	36 TO 40	41 TO 45	46 TO 50	> 50	
Calm	9.0												9.0
Variable													
35-36-01		2.0											2.0
02-03-04		1.0	2.0										3.0
05-06-07													
08-09-10		1.0											1.0
11-12-13		2.0											2.0
14-15-16													
17-18-19													
20-21-22		7.0											7.0
23-24-25		6.0											6.0
26-27-28		1.0											1.0
29-30-31													
32-33-34													
TOTAL	9.0	20.0	2.0										31

MONTH : MARCH

TIME : 12 UTC

MODEL : D

TABLE: Mean number of occurrences of concurrent wind direction (in 30 degree sector) and wind speed in specified ranges.

Wind Direction in tens of degree	WIND SPEED (KNOTS)												
	0	1 TO 5	6 TO 10	11 TO 15	16 TO 20	21 TO 25	26 TO 30	31 TO 35	36 TO 40	41 TO 45	46 TO 50	> 50	TOTAL
Calm	12.0												12.0
Variable													
35-36-01		1.0											1.0
02-03-04													
05-06-07													
08-09-10		2.0											2.0
11-12-13													
14-15-16		1.0											1.0
17-18-19													
20-21-22		7.0											7.0
23-24-25		6.0											6.0
26-27-28		1.0											1.0
29-30-31													
32-33-34		1.0											1.0
TOTAL	12.0	19.0											31

MONTH : MARCH

TIME : 15 UTC

MODEL : D

TABLE: Mean number of occurrences of concurrent wind direction (in 30 degree sector) and wind speed in specified ranges.

Wind Direction in tens of degree	WIND SPEED (KNOTS)												
	0	1 TO 5	6 TO 10	11 TO 15	16 TO 20	21 TO 25	26 TO 30	31 TO 35	36 TO 40	41 TO 45	46 TO 50	> 50	TOTAL
Calm													
Variable													
35-36-01													
02-03-04													
05-06-07													
08-09-10													
11-12-13													
14-15-16													
17-18-19													
20-21-22													
23-24-25													
26-27-28													
29-30-31													
32-33-34													
TOTAL													0

MONTH : MARCH

TIME : 18 UTC

MODEL : D

TABLE: Mean number of occurrences of concurrent wind direction (in 30 degree sector) and wind speed in specified ranges.

Wind Direction in tens of degree	WIND SPEED (KNOTS)												
	0	1 TO 5	6 TO 10	11 TO 15	16 TO 20	21 TO 25	26 TO 30	31 TO 35	36 TO 40	41 TO 45	46 TO 50	> 50	TOTAL
Calm													
Variable													
35-36-01													
02-03-04													
05-06-07													
08-09-10													
11-12-13													
14-15-16													
17-18-19													
20-21-22													
23-24-25													
26-27-28													
29-30-31													
32-33-34													
TOTAL													0

MONTH : MARCH

TIME : 21 UTC

MODEL : D

TABLE: Mean number of occurrences of concurrent wind direction (in 30 degree sector) and wind speed in specified ranges.

Wind Direction in tens of degree	WIND SPEED (KNOTS)												
	0	1 TO 5	6 TO 10	11 TO 15	16 TO 20	21 TO 25	26 TO 30	31 TO 35	36 TO 40	41 TO 45	46 TO 50	> 50	TOTAL
Calm													
Variable													
35-36-01													
02-03-04													
05-06-07													
08-09-10													
11-12-13													
14-15-16													
17-18-19													
20-21-22													
23-24-25													
26-27-28													
29-30-31													
32-33-34													
TOTAL													0

MONTH : APRIL

TIME : 0 UTC

MODEL : D

TABLE: Mean number of occurrences of concurrent wind direction (in 30 degree sector) and wind speed in specified ranges.

Wind Direction in tens of degree	WIND SPEED (KNOTS)												
	0	1 TO 5	6 TO 10	11 TO 15	16 TO 20	21 TO 25	26 TO 30	31 TO 35	36 TO 40	41 TO 45	46 TO 50	> 50	TOTAL
Calm													
Variable													
35-36-01													
02-03-04													
05-06-07													
08-09-10													
11-12-13													
14-15-16													
17-18-19													
20-21-22													
23-24-25													
26-27-28													
29-30-31													
32-33-34													
TOTAL													0

MONTH : APRIL

TIME : 3 UTC

MODEL : D

TABLE: Mean number of occurrences of concurrent wind direction (in 30 degree sector) and wind speed in specified ranges.

Wind Direction in tens of degree	WIND SPEED (KNOTS)												
	0	1 TO 5	6 TO 10	11 TO 15	16 TO 20	21 TO 25	26 TO 30	31 TO 35	36 TO 40	41 TO 45	46 TO 50	> 50	TOTAL
Calm	21.0												21.0
Variable													
35-36-01													
02-03-04		2.0											2.0
05-06-07		1.0											1.0
08-09-10		2.0											2.0
11-12-13		1.0											1.0
14-15-16		1.0											1.0
17-18-19													
20-21-22		1.0											1.0
23-24-25													
26-27-28													
29-30-31													
32-33-34													
TOTAL	21.0	8.0											29

MONTH : APRIL

TIME : 6 UTC

MODEL : D

TABLE: Mean number of occurrences of concurrent wind direction (in 30 degree sector) and wind speed in specified ranges.

Wind Direction in tens of degree	WIND SPEED (KNOTS)												TOTAL
	0	1 TO 5	6 TO 10	11 TO 15	16 TO 20	21 TO 25	26 TO 30	31 TO 35	36 TO 40	41 TO 45	46 TO 50	> 50	
Calm	16.0												16.0
Variable													
35-36-01													
02-03-04													
05-06-07			1.0										1.0
08-09-10													
11-12-13		4.0											4.0
14-15-16		5.0											5.0
17-18-19													
20-21-22		3.0											3.0
23-24-25		1.0											1.0
26-27-28													
29-30-31													
32-33-34													
TOTAL	16.0	13.0	1.0										30

MONTH : APRIL

TIME : 9 UTC

MODEL : D

TABLE: Mean number of occurrences of concurrent wind direction (in 30 degree sector) and wind speed in specified ranges.

Wind Direction in tens of degree	WIND SPEED (KNOTS)												TOTAL
	0	1 TO 5	6 TO 10	11 TO 15	16 TO 20	21 TO 25	26 TO 30	31 TO 35	36 TO 40	41 TO 45	46 TO 50	> 50	
Calm	7.0												7.0
Variable													
35-36-01		1.0											1.0
02-03-04													
05-06-07		2.0											2.0
08-09-10		1.0											1.0
11-12-13			1.0										1.0
14-15-16		1.0											1.0
17-18-19		1.0											1.0
20-21-22		5.0											5.0
23-24-25		8.0											8.0
26-27-28		1.0											1.0
29-30-31		1.0											1.0
32-33-34		1.0											1.0
TOTAL	7.0	22.0	1.0										30

MONTH : APRIL

TIME : 12 UTC

MODEL : D

TABLE: Mean number of occurrences of concurrent wind direction (in 30 degree sector) and wind speed in specified ranges.

Wind Direction in tens of degree	WIND SPEED (KNOTS)												TOTAL
	0	1 TO 5	6 TO 10	11 TO 15	16 TO 20	21 TO 25	26 TO 30	31 TO 35	36 TO 40	41 TO 45	46 TO 50	> 50	
Calm	7.0												7.0
Variable													
35-36-01		1.0	1.0										2.0
02-03-04			1.0										1.0
05-06-07			1.0										1.0
08-09-10		1.0											1.0
11-12-13			1.0										1.0
14-15-16		1.0											1.0
17-18-19													
20-21-22		4.0											4.0
23-24-25		9.0											9.0
26-27-28													
29-30-31		1.0											1.0
32-33-34		2.0											2.0
TOTAL	7.0	19.0	4.0										30

MONTH : APRIL

TIME : 15 UTC

MODEL : D

TABLE: Mean number of occurrences of concurrent wind direction (in 30 degree sector) and wind speed in specified ranges.

Wind Direction in tens of degree	WIND SPEED (KNOTS)												
	0	1 TO 5	6 TO 10	11 TO 15	16 TO 20	21 TO 25	26 TO 30	31 TO 35	36 TO 40	41 TO 45	46 TO 50	> 50	TOTAL
Calm	1.0												1.0
Variable													
35-36-01													
02-03-04													
05-06-07													
08-09-10													
11-12-13													
14-15-16													
17-18-19													
20-21-22													
23-24-25													
26-27-28													
29-30-31													
32-33-34													
TOTAL	1.0												1

MONTH : APRIL

TIME : 18 UTC

MODEL : D

TABLE: Mean number of occurrences of concurrent wind direction (in 30 degree sector) and wind speed in specified ranges.

Wind Direction in tens of degree	WIND SPEED (KNOTS)												
	0	1 TO 5	6 TO 10	11 TO 15	16 TO 20	21 TO 25	26 TO 30	31 TO 35	36 TO 40	41 TO 45	46 TO 50	> 50	TOTAL
Calm													
Variable													
35-36-01													
02-03-04													
05-06-07													
08-09-10													
11-12-13													
14-15-16													
17-18-19													
20-21-22													
23-24-25													
26-27-28													
29-30-31													
32-33-34													
TOTAL													0

MONTH : APRIL

TIME : 21 UTC

MODEL : D

TABLE: Mean number of occurrences of concurrent wind direction (in 30 degree sector) and wind speed in specified ranges.

Wind Direction in tens of degree	WIND SPEED (KNOTS)												
	0	1 TO 5	6 TO 10	11 TO 15	16 TO 20	21 TO 25	26 TO 30	31 TO 35	36 TO 40	41 TO 45	46 TO 50	> 50	TOTAL
Calm													
Variable													
35-36-01													
02-03-04													
05-06-07													
08-09-10													
11-12-13													
14-15-16													
17-18-19													
20-21-22													
23-24-25													
26-27-28													
29-30-31													
32-33-34													
TOTAL													0

MONTH : MAY

TIME : 0 UTC

MODEL : D

TABLE: Mean number of occurrences of concurrent wind direction (in 30 degree sector) and wind speed in specified ranges.

Wind Direction in tens of degree	WIND SPEED (KNOTS)												
	0	1 TO 5	6 TO 10	11 TO 15	16 TO 20	21 TO 25	26 TO 30	31 TO 35	36 TO 40	41 TO 45	46 TO 50	> 50	TOTAL
Calm													
Variable													
35-36-01													
02-03-04													
05-06-07													
08-09-10													
11-12-13													
14-15-16													
17-18-19													
20-21-22													
23-24-25													
26-27-28													
29-30-31													
32-33-34													
TOTAL													0

MONTH : MAY

TIME : 3 UTC

MODEL : D

TABLE: Mean number of occurrences of concurrent wind direction (in 30 degree sector) and wind speed in specified ranges.

Wind Direction in tens of degree	WIND SPEED (KNOTS)												
	0	1 TO 5	6 TO 10	11 TO 15	16 TO 20	21 TO 25	26 TO 30	31 TO 35	36 TO 40	41 TO 45	46 TO 50	> 50	TOTAL
Calm	20.0												20.0
Variable													
35-36-01													
02-03-04		1.0											1.0
05-06-07		3.0											3.0
08-09-10													
11-12-13		3.0											3.0
14-15-16		2.0											2.0
17-18-19													
20-21-22													
23-24-25		1.0											1.0
26-27-28													
29-30-31													
32-33-34		1.0											1.0
TOTAL	20.0	11.0											31

MONTH : MAY

TIME : 6 UTC

MODEL : D

TABLE: Mean number of occurrences of concurrent wind direction (in 30 degree sector) and wind speed in specified ranges.

Wind Direction in tens of degree	WIND SPEED (KNOTS)												
	0	1 TO 5	6 TO 10	11 TO 15	16 TO 20	21 TO 25	26 TO 30	31 TO 35	36 TO 40	41 TO 45	46 TO 50	> 50	TOTAL
Calm	16.0												16.0
Variable													
35-36-01													
02-03-04		2.0											2.0
05-06-07		1.0											1.0
08-09-10		1.0											1.0
11-12-13		2.0											2.0
14-15-16		5.0											5.0
17-18-19													
20-21-22		2.0											2.0
23-24-25		1.0											1.0
26-27-28													
29-30-31													
32-33-34													
TOTAL	16.0	14.0											30

MONTH : MAY

TIME : 9 UTC

MODEL : D

TABLE: Mean number of occurrences of concurrent wind direction (in 30 degree sector) and wind speed in specified ranges.

Wind Direction in tens of degree	WIND SPEED (KNOTS)												
	0	1 TO 5	6 TO 10	11 TO 15	16 TO 20	21 TO 25	26 TO 30	31 TO 35	36 TO 40	41 TO 45	46 TO 50	> 50	TOTAL
Calm	13.0												13.0
Variable													
35-36-01													
02-03-04													
05-06-07		2.0											2.0
08-09-10													
11-12-13		2.0											2.0
14-15-16		6.0											6.0
17-18-19		1.0											1.0
20-21-22													
23-24-25		5.0											5.0
26-27-28		1.0											1.0
29-30-31													
32-33-34		1.0											1.0
TOTAL	13.0	18.0											31

MONTH : MAY

TIME : 12 UTC

MODEL : D

TABLE: Mean number of occurrences of concurrent wind direction (in 30 degree sector) and wind speed in specified ranges.

Wind Direction in tens of degree	WIND SPEED (KNOTS)												
	0	1 TO 5	6 TO 10	11 TO 15	16 TO 20	21 TO 25	26 TO 30	31 TO 35	36 TO 40	41 TO 45	46 TO 50	> 50	TOTAL
Calm	14.0												14.0
Variable													
35-36-01		1.0											1.0
02-03-04		1.0	1.0										2.0
05-06-07		4.0											4.0
08-09-10													
11-12-13		2.0											2.0
14-15-16													
17-18-19		1.0											1.0
20-21-22													
23-24-25		6.0											6.0
26-27-28													
29-30-31													
32-33-34		1.0											1.0
TOTAL	14.0	16.0	1.0										31

MONTH : MAY

TIME : 15 UTC

MODEL : D

TABLE: Mean number of occurrences of concurrent wind direction (in 30 degree sector) and wind speed in specified ranges.

Wind Direction in tens of degree	WIND SPEED (KNOTS)												
	0	1 TO 5	6 TO 10	11 TO 15	16 TO 20	21 TO 25	26 TO 30	31 TO 35	36 TO 40	41 TO 45	46 TO 50	> 50	TOTAL
Calm													
Variable													
35-36-01													
02-03-04													
05-06-07													
08-09-10													
11-12-13													
14-15-16													
17-18-19													
20-21-22													
23-24-25													
26-27-28													
29-30-31													
32-33-34													
TOTAL													0

MONTH : MAY

TIME : 18 UTC

MODEL : D

TABLE: Mean number of occurrences of concurrent wind direction (in 30 degree sector) and wind speed in specified ranges.

Wind Direction in tens of degree	WIND SPEED (KNOTS)												
	0	1 TO 5	6 TO 10	11 TO 15	16 TO 20	21 TO 25	26 TO 30	31 TO 35	36 TO 40	41 TO 45	46 TO 50	> 50	TOTAL
Calm	1.0												1.0
Variable													
35-36-01													
02-03-04													
05-06-07													
08-09-10													
11-12-13													
14-15-16													
17-18-19													
20-21-22													
23-24-25													
26-27-28													
29-30-31													
32-33-34													
TOTAL	1.0												1

MONTH : MAY

TIME : 21 UTC

MODEL : D

TABLE: Mean number of occurrences of concurrent wind direction (in 30 degree sector) and wind speed in specified ranges.

Wind Direction in tens of degree	WIND SPEED (KNOTS)												
	0	1 TO 5	6 TO 10	11 TO 15	16 TO 20	21 TO 25	26 TO 30	31 TO 35	36 TO 40	41 TO 45	46 TO 50	> 50	TOTAL
Calm													
Variable													
35-36-01													
02-03-04													
05-06-07													
08-09-10													
11-12-13													
14-15-16													
17-18-19													
20-21-22													
23-24-25													
26-27-28													
29-30-31													
32-33-34													
TOTAL													0

MONTH : JUNE

TIME : 0 UTC

MODEL : D

TABLE: Mean number of occurrences of concurrent wind direction (in 30 degree sector) and wind speed in specified ranges.

Wind Direction in tens of degree	WIND SPEED (KNOTS)												
	0	1 TO 5	6 TO 10	11 TO 15	16 TO 20	21 TO 25	26 TO 30	31 TO 35	36 TO 40	41 TO 45	46 TO 50	> 50	TOTAL
Calm													
Variable													
35-36-01													
02-03-04													
05-06-07													
08-09-10													
11-12-13													
14-15-16													
17-18-19													
20-21-22													
23-24-25													
26-27-28													
29-30-31													
32-33-34													
TOTAL													0

MONTH : JUNE

TIME : 3 UTC

MODEL : D

TABLE: Mean number of occurrences of concurrent wind direction (in 30 degree sector) and wind speed in specified ranges.

Wind Direction in tens of degree	WIND SPEED (KNOTS)												TOTAL
	0	1 TO 5	6 TO 10	11 TO 15	16 TO 20	21 TO 25	26 TO 30	31 TO 35	36 TO 40	41 TO 45	46 TO 50	> 50	
Calm	22.0												22.0
Variable													
35-36-01													
02-03-04		1.0											1.0
05-06-07		1.0											1.0
08-09-10		1.0											1.0
11-12-13		3.0											3.0
14-15-16		2.0											2.0
17-18-19													
20-21-22													
23-24-25													
26-27-28													
29-30-31													
32-33-34													
TOTAL	22.0	8.0											30

MONTH : JUNE

TIME : 6 UTC

MODEL : D

TABLE: Mean number of occurrences of concurrent wind direction (in 30 degree sector) and wind speed in specified ranges.

Wind Direction in tens of degree	WIND SPEED (KNOTS)												
	0	1 TO 5	6 TO 10	11 TO 15	16 TO 20	21 TO 25	26 TO 30	31 TO 35	36 TO 40	41 TO 45	46 TO 50	> 50	TOTAL
Calm	19.0												19.0
Variable													
35-36-01													
02-03-04													
05-06-07		1.0											1.0
08-09-10		2.0											2.0
11-12-13		3.0											3.0
14-15-16		1.0											1.0
17-18-19		1.0											1.0
20-21-22		1.0											1.0
23-24-25		2.0											2.0
26-27-28													
29-30-31													
32-33-34													
TOTAL	19.0	11.0											30

MONTH : JUNE

TIME : 9 UTC

MODEL : D

TABLE: Mean number of occurrences of concurrent wind direction (in 30 degree sector) and wind speed in specified ranges.

Wind Direction in tens of degree	WIND SPEED (KNOTS)												TOTAL
	0	1 TO 5	6 TO 10	11 TO 15	16 TO 20	21 TO 25	26 TO 30	31 TO 35	36 TO 40	41 TO 45	46 TO 50	> 50	
Calm	9.0												9.0
Variable													
35-36-01		1.0											1.0
02-03-04			1.0										1.0
05-06-07		3.0											3.0
08-09-10													
11-12-13		2.0											2.0
14-15-16		4.0											4.0
17-18-19		2.0											2.0
20-21-22		2.0											2.0
23-24-25		4.0											4.0
26-27-28		1.0											1.0
29-30-31													
32-33-34		1.0											1.0
TOTAL	9.0	20.0	1.0										30

MONTH : JUNE

TIME : 12 UTC

MODEL : D

TABLE: Mean number of occurrences of concurrent wind direction (in 30 degree sector) and wind speed in specified ranges.

Wind Direction in tens of degree	WIND SPEED (KNOTS)												
	0	1 TO 5	6 TO 10	11 TO 15	16 TO 20	21 TO 25	26 TO 30	31 TO 35	36 TO 40	41 TO 45	46 TO 50	> 50	TOTAL
Calm	16.0												16.0
Variable													
35-36-01		1.0											1.0
02-03-04													
05-06-07		2.0											2.0
08-09-10													
11-12-13		2.0											2.0
14-15-16													
17-18-19		1.0											1.0
20-21-22		2.0											2.0
23-24-25		6.0											6.0
26-27-28													
29-30-31													
32-33-34													
TOTAL	16.0	14.0											30

MONTH : JUNE

TIME : 15 UTC

MODEL : D

TABLE: Mean number of occurrences of concurrent wind direction (in 30 degree sector) and wind speed in specified ranges.

Wind Direction in tens of degree	WIND SPEED (KNOTS)												
	0	1 TO 5	6 TO 10	11 TO 15	16 TO 20	21 TO 25	26 TO 30	31 TO 35	36 TO 40	41 TO 45	46 TO 50	> 50	TOTAL
Calm													
Variable													
35-36-01													
02-03-04													
05-06-07													
08-09-10													
11-12-13													
14-15-16													
17-18-19													
20-21-22													
23-24-25													
26-27-28													
29-30-31													
32-33-34													
TOTAL													0

MONTH : JUNE

TIME : 18 UTC

MODEL : D

TABLE: Mean number of occurrences of concurrent wind direction (in 30 degree sector) and wind speed in specified ranges.

Wind Direction in tens of degree	WIND SPEED (KNOTS)												
	0	1 TO 5	6 TO 10	11 TO 15	16 TO 20	21 TO 25	26 TO 30	31 TO 35	36 TO 40	41 TO 45	46 TO 50	> 50	TOTAL
Calm													
Variable													
35-36-01													
02-03-04													
05-06-07													
08-09-10													
11-12-13													
14-15-16													
17-18-19													
20-21-22													
23-24-25													
26-27-28													
29-30-31													
32-33-34													
TOTAL													0

MONTH : JUNE

TIME : 21 UTC

MODEL : D

TABLE: Mean number of occurrences of concurrent wind direction (in 30 degree sector) and wind speed in specified ranges.

Wind Direction in tens of degree	WIND SPEED (KNOTS)												
	0	1 TO 5	6 TO 10	11 TO 15	16 TO 20	21 TO 25	26 TO 30	31 TO 35	36 TO 40	41 TO 45	46 TO 50	> 50	TOTAL
Calm													
Variable													
35-36-01													
02-03-04													
05-06-07													
08-09-10													
11-12-13													
14-15-16													
17-18-19													
20-21-22													
23-24-25													
26-27-28													
29-30-31													
32-33-34													
TOTAL													0

MONTH : JULY

TIME : 0 UTC

MODEL : D

TABLE: Mean number of occurrences of concurrent wind direction (in 30 degree sector) and wind speed in specified ranges.

Wind Direction in tens of degree	WIND SPEED (KNOTS)												
	0	1 TO 5	6 TO 10	11 TO 15	16 TO 20	21 TO 25	26 TO 30	31 TO 35	36 TO 40	41 TO 45	46 TO 50	> 50	TOTAL
Calm													
Variable													
35-36-01													
02-03-04													
05-06-07													
08-09-10													
11-12-13													
14-15-16													
17-18-19													
20-21-22													
23-24-25													
26-27-28													
29-30-31													
32-33-34													
TOTAL													0

MONTH : JULY

TIME : 3 UTC

MODEL : D

TABLE: Mean number of occurrences of concurrent wind direction (in 30 degree sector) and wind speed in specified ranges.

Wind Direction in tens of degree	WIND SPEED (KNOTS)												
	0	1 TO 5	6 TO 10	11 TO 15	16 TO 20	21 TO 25	26 TO 30	31 TO 35	36 TO 40	41 TO 45	46 TO 50	> 50	TOTAL
Calm	23.0												23.0
Variable													
35-36-01													
02-03-04		1.0											1.0
05-06-07													
08-09-10		3.0											3.0
11-12-13		1.0											1.0
14-15-16		1.0											1.0
17-18-19													
20-21-22		1.0											1.0
23-24-25													
26-27-28													
29-30-31													
32-33-34		1.0											1.0
TOTAL	23.0	8.0											31

MONTH : JULY

TIME : 6 UTC

MODEL : D

TABLE: Mean number of occurrences of concurrent wind direction (in 30 degree sector) and wind speed in specified ranges.

Wind Direction in tens of degree	WIND SPEED (KNOTS)												
	0	1 TO 5	6 TO 10	11 TO 15	16 TO 20	21 TO 25	26 TO 30	31 TO 35	36 TO 40	41 TO 45	46 TO 50	> 50	TOTAL
Calm	18.0												18.0
Variable													
35-36-01													
02-03-04													
05-06-07													
08-09-10		3.0											3.0
11-12-13		1.0											1.0
14-15-16		3.0											3.0
17-18-19		1.0											1.0
20-21-22													
23-24-25		5.0											5.0
26-27-28													
29-30-31													
32-33-34													
TOTAL	18.0	13.0											31

MONTH : JULY

TIME : 9 UTC

MODEL : D

TABLE: Mean number of occurrences of concurrent wind direction (in 30 degree sector) and wind speed in specified ranges.

Wind Direction in tens of degree	WIND SPEED (KNOTS)												
	0	1 TO 5	6 TO 10	11 TO 15	16 TO 20	21 TO 25	26 TO 30	31 TO 35	36 TO 40	41 TO 45	46 TO 50	> 50	TOTAL
Calm	8.0												8.0
Variable													
35-36-01													
02-03-04			1.0										1.0
05-06-07		2.0											2.0
08-09-10													
11-12-13													
14-15-16		1.0											1.0
17-18-19		3.0											3.0
20-21-22		9.0											9.0
23-24-25		5.0											5.0
26-27-28													
29-30-31													
32-33-34		2.0											2.0
TOTAL	8.0	22.0	1.0										31

MONTH : JULY

TIME : 12 UTC

MODEL : D

TABLE: Mean number of occurrences of concurrent wind direction (in 30 degree sector) and wind speed in specified ranges.

Wind Direction in tens of degree	WIND SPEED (KNOTS)												
	0	1 TO 5	6 TO 10	11 TO 15	16 TO 20	21 TO 25	26 TO 30	31 TO 35	36 TO 40	41 TO 45	46 TO 50	> 50	TOTAL
Calm	14.0												14.0
Variable													
35-36-01		2.0											2.0
02-03-04		2.0											2.0
05-06-07													
08-09-10		1.0											1.0
11-12-13		2.0											2.0
14-15-16		1.0											1.0
17-18-19													
20-21-22		3.0											3.0
23-24-25		5.0											5.0
26-27-28		1.0											1.0
29-30-31													
32-33-34													
TOTAL	14.0	17.0											31

MONTH : JULY

TIME : 15 UTC

MODEL : D

TABLE: Mean number of occurrences of concurrent wind direction (in 30 degree sector) and wind speed in specified ranges.

Wind Direction in tens of degree	WIND SPEED (KNOTS)												
	0	1 TO 5	6 TO 10	11 TO 15	16 TO 20	21 TO 25	26 TO 30	31 TO 35	36 TO 40	41 TO 45	46 TO 50	> 50	TOTAL
Calm													
Variable													
35-36-01													
02-03-04													
05-06-07													
08-09-10													
11-12-13													
14-15-16													
17-18-19													
20-21-22													
23-24-25													
26-27-28													
29-30-31													
32-33-34													
TOTAL													0

MONTH : JULY

TIME : 18 UTC

MODEL : D

TABLE: Mean number of occurrences of concurrent wind direction (in 30 degree sector) and wind speed in specified ranges.

Wind Direction in tens of degree	WIND SPEED (KNOTS)												
	0	1 TO 5	6 TO 10	11 TO 15	16 TO 20	21 TO 25	26 TO 30	31 TO 35	36 TO 40	41 TO 45	46 TO 50	> 50	TOTAL
Calm													
Variable													
35-36-01													
02-03-04													
05-06-07													
08-09-10													
11-12-13													
14-15-16													
17-18-19													
20-21-22													
23-24-25													
26-27-28													
29-30-31													
32-33-34													
TOTAL													0

MONTH : JULY

TIME : 21 UTC

MODEL : D

TABLE: Mean number of occurrences of concurrent wind direction (in 30 degree sector) and wind speed in specified ranges.

Wind Direction in tens of degree	WIND SPEED (KNOTS)												
	0	1 TO 5	6 TO 10	11 TO 15	16 TO 20	21 TO 25	26 TO 30	31 TO 35	36 TO 40	41 TO 45	46 TO 50	> 50	TOTAL
Calm													
Variable													
35-36-01													
02-03-04													
05-06-07													
08-09-10													
11-12-13													
14-15-16													
17-18-19													
20-21-22													
23-24-25													
26-27-28													
29-30-31													
32-33-34													
TOTAL													0

MONTH : AUGUST

TIME : 0 UTC

MODEL : D

TABLE: Mean number of occurrences of concurrent wind direction (in 30 degree sector) and wind speed in specified ranges.

Wind Direction in tens of degree	WIND SPEED (KNOTS)												
	0	1 TO 5	6 TO 10	11 TO 15	16 TO 20	21 TO 25	26 TO 30	31 TO 35	36 TO 40	41 TO 45	46 TO 50	> 50	TOTAL
Calm													
Variable													
35-36-01													
02-03-04													
05-06-07													
08-09-10													
11-12-13													
14-15-16													
17-18-19													
20-21-22													
23-24-25													
26-27-28													
29-30-31													
32-33-34													
TOTAL													0

MONTH : AUGUST

TIME : 3 UTC

MODEL : D

TABLE: Mean number of occurrences of concurrent wind direction (in 30 degree sector) and wind speed in specified ranges.

Wind Direction in tens of degree	WIND SPEED (KNOTS)												TOTAL
	0	1 TO 5	6 TO 10	11 TO 15	16 TO 20	21 TO 25	26 TO 30	31 TO 35	36 TO 40	41 TO 45	46 TO 50	> 50	
Calm	21.0												21.0
Variable													
35-36-01													
02-03-04		1.0											1.0
05-06-07													
08-09-10		1.0											1.0
11-12-13		2.0											2.0
14-15-16		2.0											2.0
17-18-19													
20-21-22													
23-24-25		2.0	1.0										3.0
26-27-28													
29-30-31													
32-33-34		1.0											1.0
TOTAL	21.0	9.0	1.0										31

MONTH : AUGUST

TIME : 6 UTC

MODEL : D

TABLE: Mean number of occurrences of concurrent wind direction (in 30 degree sector) and wind speed in specified ranges.

Wind Direction in tens of degree	WIND SPEED (KNOTS)												
	0	1 TO 5	6 TO 10	11 TO 15	16 TO 20	21 TO 25	26 TO 30	31 TO 35	36 TO 40	41 TO 45	46 TO 50	> 50	TOTAL
Calm	25.0												25.0
Variable													
35-36-01													
02-03-04													
05-06-07													
08-09-10		1.0											1.0
11-12-13													
14-15-16		3.0											3.0
17-18-19													
20-21-22		1.0											1.0
23-24-25		1.0											1.0
26-27-28													
29-30-31													
32-33-34													
TOTAL	25.0	6.0											31

MONTH : AUGUST

TIME : 9 UTC

MODEL : D

TABLE: Mean number of occurrences of concurrent wind direction (in 30 degree sector) and wind speed in specified ranges.

Wind Direction in tens of degree	WIND SPEED (KNOTS)												TOTAL
	0	1 TO 5	6 TO 10	11 TO 15	16 TO 20	21 TO 25	26 TO 30	31 TO 35	36 TO 40	41 TO 45	46 TO 50	> 50	
Calm	9.0												9.0
Variable													
35-36-01													
02-03-04													
05-06-07													
08-09-10		1.0											1.0
11-12-13		3.0											3.0
14-15-16		2.0											2.0
17-18-19													
20-21-22		8.0											8.0
23-24-25		5.0											5.0
26-27-28													
29-30-31		1.0											1.0
32-33-34													
TOTAL	9.0	20.0											29

MONTH : AUGUST

TIME : 12 UTC

MODEL : D

TABLE: Mean number of occurrences of concurrent wind direction (in 30 degree sector) and wind speed in specified ranges.

Wind Direction in tens of degree	WIND SPEED (KNOTS)												
	0	1 TO 5	6 TO 10	11 TO 15	16 TO 20	21 TO 25	26 TO 30	31 TO 35	36 TO 40	41 TO 45	46 TO 50	> 50	TOTAL
Calm	11.0												11.0
Variable													
35-36-01		2.0											2.0
02-03-04													
05-06-07													
08-09-10													
11-12-13													
14-15-16		1.0											1.0
17-18-19													
20-21-22		7.0											7.0
23-24-25		8.0											8.0
26-27-28													
29-30-31													
32-33-34													
TOTAL	11.0	18.0											29

MONTH : AUGUST

TIME : 15 UTC

MODEL : D

TABLE: Mean number of occurrences of concurrent wind direction (in 30 degree sector) and wind speed in specified ranges.

Wind Direction in tens of degree	WIND SPEED (KNOTS)												
	0	1 TO 5	6 TO 10	11 TO 15	16 TO 20	21 TO 25	26 TO 30	31 TO 35	36 TO 40	41 TO 45	46 TO 50	> 50	TOTAL
Calm													
Variable													
35-36-01													
02-03-04													
05-06-07													
08-09-10													
11-12-13													
14-15-16													
17-18-19													
20-21-22													
23-24-25													
26-27-28													
29-30-31													
32-33-34													
TOTAL													0

MONTH : AUGUST

TIME : 18 UTC

MODEL : D

TABLE: Mean number of occurrences of concurrent wind direction (in 30 degree sector) and wind speed in specified ranges.

Wind Direction in tens of degree	WIND SPEED (KNOTS)												
	0	1 TO 5	6 TO 10	11 TO 15	16 TO 20	21 TO 25	26 TO 30	31 TO 35	36 TO 40	41 TO 45	46 TO 50	> 50	TOTAL
Calm													
Variable													
35-36-01													
02-03-04													
05-06-07													
08-09-10													
11-12-13													
14-15-16													
17-18-19													
20-21-22													
23-24-25													
26-27-28													
29-30-31													
32-33-34													
TOTAL													0

MONTH : AUGUST

TIME : 21 UTC

MODEL : D

TABLE: Mean number of occurrences of concurrent wind direction (in 30 degree sector) and wind speed in specified ranges.

Wind Direction in tens of degree	WIND SPEED (KNOTS)												
	0	1 TO 5	6 TO 10	11 TO 15	16 TO 20	21 TO 25	26 TO 30	31 TO 35	36 TO 40	41 TO 45	46 TO 50	> 50	TOTAL
Calm													
Variable													
35-36-01													
02-03-04													
05-06-07													
08-09-10													
11-12-13													
14-15-16													
17-18-19													
20-21-22													
23-24-25													
26-27-28													
29-30-31													
32-33-34													
TOTAL													0

MONTH : SEPTEMBER

TIME : 0 UTC

MODEL : D

TABLE: Mean number of occurrences of concurrent wind direction (in 30 degree sector) and wind speed in specified ranges.

Wind Direction in tens of degree	WIND SPEED (KNOTS)												
	0	1 TO 5	6 TO 10	11 TO 15	16 TO 20	21 TO 25	26 TO 30	31 TO 35	36 TO 40	41 TO 45	46 TO 50	> 50	TOTAL
Calm													
Variable													
35-36-01													
02-03-04													
05-06-07													
08-09-10													
11-12-13													
14-15-16													
17-18-19													
20-21-22													
23-24-25													
26-27-28													
29-30-31													
32-33-34													
TOTAL													0

MONTH : SEPTEMBER

TIME : 3 UTC

MODEL : D

TABLE: Mean number of occurrences of concurrent wind direction (in 30 degree sector) and wind speed in specified ranges.

Wind Direction in tens of degree	WIND SPEED (KNOTS)												TOTAL
	0	1 TO 5	6 TO 10	11 TO 15	16 TO 20	21 TO 25	26 TO 30	31 TO 35	36 TO 40	41 TO 45	46 TO 50	> 50	
Calm	26.0												26.0
Variable													
35-36-01													
02-03-04													
05-06-07													
08-09-10		2.0											2.0
11-12-13													
14-15-16		2.0											2.0
17-18-19													
20-21-22													
23-24-25													
26-27-28													
29-30-31													
32-33-34													
TOTAL	26.0	4.0											30

MONTH : SEPTEMBER

TIME : 6 UTC

MODEL : D

TABLE: Mean number of occurrences of concurrent wind direction (in 30 degree sector) and wind speed in specified ranges.

Wind Direction in tens of degree	WIND SPEED (KNOTS)												
	0	1 TO 5	6 TO 10	11 TO 15	16 TO 20	21 TO 25	26 TO 30	31 TO 35	36 TO 40	41 TO 45	46 TO 50	> 50	TOTAL
Calm	17.0												17.0
Variable													
35-36-01													
02-03-04													
05-06-07													
08-09-10													
11-12-13		2.0											2.0
14-15-16		2.0											2.0
17-18-19		2.0											2.0
20-21-22		4.0											4.0
23-24-25		2.0											2.0
26-27-28		1.0											1.0
29-30-31													
32-33-34													
TOTAL	17.0	13.0											30

MONTH : SEPTEMBER

TIME : 9 UTC

MODEL : D

TABLE: Mean number of occurrences of concurrent wind direction (in 30 degree sector) and wind speed in specified ranges.

Wind Direction in tens of degree	WIND SPEED (KNOTS)												
	0	1 TO 5	6 TO 10	11 TO 15	16 TO 20	21 TO 25	26 TO 30	31 TO 35	36 TO 40	41 TO 45	46 TO 50	> 50	TOTAL
Calm	13.0												13.0
Variable													
35-36-01													
02-03-04													
05-06-07		1.0											1.0
08-09-10													
11-12-13		1.0											1.0
14-15-16													
17-18-19		1.0											1.0
20-21-22		9.0											9.0
23-24-25		4.0											4.0
26-27-28													
29-30-31													
32-33-34													
TOTAL	13.0	16.0											29

MONTH : SEPTEMBER

TIME : 12 UTC

MODEL : D

TABLE: Mean number of occurrences of concurrent wind direction (in 30 degree sector) and wind speed in specified ranges.

Wind Direction in tens of degree	WIND SPEED (KNOTS)												
	0	1 TO 5	6 TO 10	11 TO 15	16 TO 20	21 TO 25	26 TO 30	31 TO 35	36 TO 40	41 TO 45	46 TO 50	> 50	TOTAL
Calm	21.0												21.0
Variable													
35-36-01													
02-03-04		1.0											1.0
05-06-07													
08-09-10													
11-12-13													
14-15-16													
17-18-19													
20-21-22		5.0											5.0
23-24-25		1.0											1.0
26-27-28													
29-30-31													
32-33-34		1.0											1.0
TOTAL	21.0	8.0											29

MONTH : SEPTEMBER

TIME : 15 UTC

MODEL : D

TABLE: Mean number of occurrences of concurrent wind direction (in 30 degree sector) and wind speed in specified ranges.

Wind Direction in tens of degree	WIND SPEED (KNOTS)												
	0	1 TO 5	6 TO 10	11 TO 15	16 TO 20	21 TO 25	26 TO 30	31 TO 35	36 TO 40	41 TO 45	46 TO 50	> 50	TOTAL
Calm													
Variable													
35-36-01													
02-03-04													
05-06-07													
08-09-10													
11-12-13													
14-15-16													
17-18-19													
20-21-22													
23-24-25													
26-27-28													
29-30-31													
32-33-34													
TOTAL													0

MONTH : SEPTEMBER

TIME : 18 UTC

MODEL : D

TABLE: Mean number of occurrences of concurrent wind direction (in 30 degree sector) and wind speed in specified ranges.

Wind Direction in tens of degree	WIND SPEED (KNOTS)												
	0	1 TO 5	6 TO 10	11 TO 15	16 TO 20	21 TO 25	26 TO 30	31 TO 35	36 TO 40	41 TO 45	46 TO 50	> 50	TOTAL
Calm													
Variable													
35-36-01													
02-03-04													
05-06-07													
08-09-10													
11-12-13													
14-15-16													
17-18-19													
20-21-22													
23-24-25													
26-27-28													
29-30-31													
32-33-34													
TOTAL													0

MONTH : SEPTEMBER

TIME : 21 UTC

MODEL : D

TABLE: Mean number of occurrences of concurrent wind direction (in 30 degree sector) and wind speed in specified ranges.

Wind Direction in tens of degree	WIND SPEED (KNOTS)												
	0	1 TO 5	6 TO 10	11 TO 15	16 TO 20	21 TO 25	26 TO 30	31 TO 35	36 TO 40	41 TO 45	46 TO 50	> 50	TOTAL
Calm													
Variable													
35-36-01													
02-03-04													
05-06-07													
08-09-10													
11-12-13													
14-15-16													
17-18-19													
20-21-22													
23-24-25													
26-27-28													
29-30-31													
32-33-34													
TOTAL													0

MONTH : OCTOBER

TIME : 0 UTC

MODEL : D

TABLE: Mean number of occurrences of concurrent wind direction (in 30 degree sector) and wind speed in specified ranges.

Wind Direction in tens of degree	WIND SPEED (KNOTS)												
	0	1 TO 5	6 TO 10	11 TO 15	16 TO 20	21 TO 25	26 TO 30	31 TO 35	36 TO 40	41 TO 45	46 TO 50	> 50	TOTAL
Calm													
Variable													
35-36-01													
02-03-04													
05-06-07													
08-09-10													
11-12-13													
14-15-16													
17-18-19													
20-21-22													
23-24-25													
26-27-28													
29-30-31													
32-33-34													
TOTAL													0

MONTH : OCTOBER

TIME : 3 UTC

MODEL : D

TABLE: Mean number of occurrences of concurrent wind direction (in 30 degree sector) and wind speed in specified ranges.

Wind Direction in tens of degree	WIND SPEED (KNOTS)												
	0	1 TO 5	6 TO 10	11 TO 15	16 TO 20	21 TO 25	26 TO 30	31 TO 35	36 TO 40	41 TO 45	46 TO 50	> 50	TOTAL
Calm	25.0												25.0
Variable													
35-36-01													
02-03-04													
05-06-07		1.0											1.0
08-09-10		4.0											4.0
11-12-13													
14-15-16													
17-18-19													
20-21-22													
23-24-25													
26-27-28													
29-30-31													
32-33-34													
TOTAL	25.0	5.0											30

MONTH : OCTOBER

TIME : 6 UTC

MODEL : D

TABLE: Mean number of occurrences of concurrent wind direction (in 30 degree sector) and wind speed in specified ranges.

Wind Direction in tens of degree	WIND SPEED (KNOTS)												
	0	1 TO 5	6 TO 10	11 TO 15	16 TO 20	21 TO 25	26 TO 30	31 TO 35	36 TO 40	41 TO 45	46 TO 50	> 50	TOTAL
Calm	19.0												19.0
Variable													
35-36-01		1.0											1.0
02-03-04													
05-06-07			1.0										1.0
08-09-10													
11-12-13		3.0											3.0
14-15-16		4.0											4.0
17-18-19		1.0											1.0
20-21-22		1.0											1.0
23-24-25		1.0											1.0
26-27-28													
29-30-31													
32-33-34													
TOTAL	19.0	11.0	1.0										31

MONTH : OCTOBER

TIME : 9 UTC

MODEL : D

TABLE: Mean number of occurrences of concurrent wind direction (in 30 degree sector) and wind speed in specified ranges.

Wind Direction in tens of degree	WIND SPEED (KNOTS)												
	0	1 TO 5	6 TO 10	11 TO 15	16 TO 20	21 TO 25	26 TO 30	31 TO 35	36 TO 40	41 TO 45	46 TO 50	> 50	TOTAL
Calm	11.0												11.0
Variable													
35-36-01													
02-03-04													
05-06-07													
08-09-10		1.0											1.0
11-12-13		1.0											1.0
14-15-16		1.0											1.0
17-18-19		2.0											2.0
20-21-22		10.0											10.0
23-24-25		5.0											5.0
26-27-28													
29-30-31													
32-33-34													
TOTAL	11.0	20.0											31

MONTH : OCTOBER

TIME : 12 UTC

MODEL : D

TABLE: Mean number of occurrences of concurrent wind direction (in 30 degree sector) and wind speed in specified ranges.

Wind Direction in tens of degree	WIND SPEED (KNOTS)												
	0	1 TO 5	6 TO 10	11 TO 15	16 TO 20	21 TO 25	26 TO 30	31 TO 35	36 TO 40	41 TO 45	46 TO 50	> 50	TOTAL
Calm	28.0												28.0
Variable													
35-36-01													
02-03-04													
05-06-07													
08-09-10													
11-12-13													
14-15-16		1.0											1.0
17-18-19													
20-21-22													
23-24-25		1.0											1.0
26-27-28													
29-30-31													
32-33-34		1.0											1.0
TOTAL	28.0	3.0											31

MONTH : OCTOBER

TIME : 15 UTC

MODEL : D

TABLE: Mean number of occurrences of concurrent wind direction (in 30 degree sector) and wind speed in specified ranges.

Wind Direction in tens of degree	WIND SPEED (KNOTS)												
	0	1 TO 5	6 TO 10	11 TO 15	16 TO 20	21 TO 25	26 TO 30	31 TO 35	36 TO 40	41 TO 45	46 TO 50	> 50	TOTAL
Calm													
Variable													
35-36-01													
02-03-04													
05-06-07													
08-09-10													
11-12-13													
14-15-16													
17-18-19													
20-21-22													
23-24-25													
26-27-28													
29-30-31													
32-33-34													
TOTAL													0

MONTH : OCTOBER

TIME : 18 UTC

MODEL : D

TABLE: Mean number of occurrences of concurrent wind direction (in 30 degree sector) and wind speed in specified ranges.

Wind Direction in tens of degree	WIND SPEED (KNOTS)												
	0	1 TO 5	6 TO 10	11 TO 15	16 TO 20	21 TO 25	26 TO 30	31 TO 35	36 TO 40	41 TO 45	46 TO 50	> 50	TOTAL
Calm													
Variable													
35-36-01													
02-03-04													
05-06-07													
08-09-10													
11-12-13													
14-15-16													
17-18-19													
20-21-22													
23-24-25													
26-27-28													
29-30-31													
32-33-34													
TOTAL													0

MONTH : OCTOBER

TIME : 21 UTC

MODEL : D

TABLE: Mean number of occurrences of concurrent wind direction (in 30 degree sector) and wind speed in specified ranges.

Wind Direction in tens of degree	WIND SPEED (KNOTS)												
	0	1 TO 5	6 TO 10	11 TO 15	16 TO 20	21 TO 25	26 TO 30	31 TO 35	36 TO 40	41 TO 45	46 TO 50	> 50	TOTAL
Calm													
Variable													
35-36-01													
02-03-04													
05-06-07													
08-09-10													
11-12-13													
14-15-16													
17-18-19													
20-21-22													
23-24-25													
26-27-28													
29-30-31													
32-33-34													
TOTAL													0

MONTH : NOVEMBER

TIME : 0 UTC

MODEL : D

TABLE: Mean number of occurrences of concurrent wind direction (in 30 degree sector) and wind speed in specified ranges.

Wind Direction in tens of degree	WIND SPEED (KNOTS)												
	0	1 TO 5	6 TO 10	11 TO 15	16 TO 20	21 TO 25	26 TO 30	31 TO 35	36 TO 40	41 TO 45	46 TO 50	> 50	TOTAL
Calm													
Variable													
35-36-01													
02-03-04													
05-06-07													
08-09-10													
11-12-13													
14-15-16													
17-18-19													
20-21-22													
23-24-25													
26-27-28													
29-30-31													
32-33-34													
TOTAL													0

MONTH : NOVEMBER

TIME : 3 UTC

MODEL : D

TABLE: Mean number of occurrences of concurrent wind direction (in 30 degree sector) and wind speed in specified ranges.

Wind Direction in tens of degree	WIND SPEED (KNOTS)												
	0	1 TO 5	6 TO 10	11 TO 15	16 TO 20	21 TO 25	26 TO 30	31 TO 35	36 TO 40	41 TO 45	46 TO 50	> 50	TOTAL
Calm	24.0												24.0
Variable													
35-36-01													
02-03-04													
05-06-07													
08-09-10													
11-12-13		3.0											3.0
14-15-16		2.0											2.0
17-18-19													
20-21-22													
23-24-25		1.0											1.0
26-27-28													
29-30-31													
32-33-34													
TOTAL	24.0	6.0											30

MONTH : NOVEMBER

TIME : 6 UTC

MODEL : D

TABLE: Mean number of occurrences of concurrent wind direction (in 30 degree sector) and wind speed in specified ranges.

Wind Direction in tens of degree	WIND SPEED (KNOTS)												
	0	1 TO 5	6 TO 10	11 TO 15	16 TO 20	21 TO 25	26 TO 30	31 TO 35	36 TO 40	41 TO 45	46 TO 50	> 50	TOTAL
Calm	20.0												20.0
Variable													
35-36-01													
02-03-04													
05-06-07													
08-09-10													
11-12-13		3.0											3.0
14-15-16		5.0											5.0
17-18-19													
20-21-22		2.0											2.0
23-24-25													
26-27-28													
29-30-31													
32-33-34													
TOTAL	20.0	10.0											30

MONTH : NOVEMBER

TIME : 9 UTC

MODEL : D

TABLE: Mean number of occurrences of concurrent wind direction (in 30 degree sector) and wind speed in specified ranges.

Wind Direction in tens of degree	WIND SPEED (KNOTS)												TOTAL
	0	1 TO 5	6 TO 10	11 TO 15	16 TO 20	21 TO 25	26 TO 30	31 TO 35	36 TO 40	41 TO 45	46 TO 50	> 50	
Calm	9.0												9.0
Variable													
35-36-01													
02-03-04													
05-06-07													
08-09-10													
11-12-13													
14-15-16		1.0											1.0
17-18-19		7.0											7.0
20-21-22		6.0											6.0
23-24-25		6.0											6.0
26-27-28													
29-30-31													
32-33-34		1.0											1.0
TOTAL	9.0	21.0											30

MONTH : NOVEMBER

TIME : 12 UTC

MODEL : D

TABLE: Mean number of occurrences of concurrent wind direction (in 30 degree sector) and wind speed in specified ranges.

Wind Direction in tens of degree	WIND SPEED (KNOTS)												
	0	1 TO 5	6 TO 10	11 TO 15	16 TO 20	21 TO 25	26 TO 30	31 TO 35	36 TO 40	41 TO 45	46 TO 50	> 50	TOTAL
Calm	26.0												26.0
Variable													
35-36-01													
02-03-04		1.0											1.0
05-06-07		1.0											1.0
08-09-10													
11-12-13													
14-15-16													
17-18-19													
20-21-22													
23-24-25													
26-27-28													
29-30-31													
32-33-34		1.0											1.0
TOTAL	26.0	3.0											29

MONTH : NOVEMBER

TIME : 15 UTC

MODEL : D

TABLE: Mean number of occurrences of concurrent wind direction (in 30 degree sector) and wind speed in specified ranges.

Wind Direction in tens of degree	WIND SPEED (KNOTS)												TOTAL
	0	1 TO 5	6 TO 10	11 TO 15	16 TO 20	21 TO 25	26 TO 30	31 TO 35	36 TO 40	41 TO 45	46 TO 50	> 50	
Calm													
Variable													
35-36-01													
02-03-04													
05-06-07													
08-09-10													
11-12-13													
14-15-16													
17-18-19													
20-21-22													
23-24-25													
26-27-28													
29-30-31													
32-33-34													
TOTAL													0

MONTH : NOVEMBER

TIME : 18 UTC

MODEL : D

TABLE: Mean number of occurrences of concurrent wind direction (in 30 degree sector) and wind speed in specified ranges.

Wind Direction in tens of degree	WIND SPEED (KNOTS)												
	0	1 TO 5	6 TO 10	11 TO 15	16 TO 20	21 TO 25	26 TO 30	31 TO 35	36 TO 40	41 TO 45	46 TO 50	> 50	TOTAL
Calm													
Variable													
35-36-01													
02-03-04													
05-06-07													
08-09-10													
11-12-13													
14-15-16													
17-18-19													
20-21-22													
23-24-25													
26-27-28													
29-30-31													
32-33-34													
TOTAL													0

MONTH : NOVEMBER

TIME : 21 UTC

MODEL : D

TABLE: Mean number of occurrences of concurrent wind direction (in 30 degree sector) and wind speed in specified ranges.

Wind Direction in tens of degree	WIND SPEED (KNOTS)												
	0	1 TO 5	6 TO 10	11 TO 15	16 TO 20	21 TO 25	26 TO 30	31 TO 35	36 TO 40	41 TO 45	46 TO 50	> 50	TOTAL
Calm													
Variable													
35-36-01													
02-03-04													
05-06-07													
08-09-10													
11-12-13													
14-15-16													
17-18-19													
20-21-22													
23-24-25													
26-27-28													
29-30-31													
32-33-34													
TOTAL													0

MONTH : DECEMBER

TIME : 0 UTC

MODEL : D

TABLE: Mean number of occurrences of concurrent wind direction (in 30 degree sector) and wind speed in specified ranges.

Wind Direction in tens of degree	WIND SPEED (KNOTS)												
	0	1 TO 5	6 TO 10	11 TO 15	16 TO 20	21 TO 25	26 TO 30	31 TO 35	36 TO 40	41 TO 45	46 TO 50	> 50	TOTAL
Calm													
Variable													
35-36-01													
02-03-04													
05-06-07													
08-09-10													
11-12-13													
14-15-16													
17-18-19													
20-21-22													
23-24-25													
26-27-28													
29-30-31													
32-33-34													
TOTAL													0

MONTH : DECEMBER

TIME : 3 UTC

MODEL : D

TABLE: Mean number of occurrences of concurrent wind direction (in 30 degree sector) and wind speed in specified ranges.

Wind Direction in tens of degree	WIND SPEED (KNOTS)												
	0	1 TO 5	6 TO 10	11 TO 15	16 TO 20	21 TO 25	26 TO 30	31 TO 35	36 TO 40	41 TO 45	46 TO 50	> 50	TOTAL
Calm													
Variable													
35-36-01													
02-03-04													
05-06-07													
08-09-10													
11-12-13													
14-15-16													
17-18-19													
20-21-22													
23-24-25													
26-27-28													
29-30-31													
32-33-34													
TOTAL													0

MONTH : DECEMBER

TIME : 6 UTC

MODEL : D

TABLE: Mean number of occurrences of concurrent wind direction (in 30 degree sector) and wind speed in specified ranges.

Wind Direction in tens of degree	WIND SPEED (KNOTS)												
	0	1 TO 5	6 TO 10	11 TO 15	16 TO 20	21 TO 25	26 TO 30	31 TO 35	36 TO 40	41 TO 45	46 TO 50	> 50	TOTAL
Calm													
Variable													
35-36-01													
02-03-04													
05-06-07													
08-09-10													
11-12-13													
14-15-16													
17-18-19													
20-21-22													
23-24-25													
26-27-28													
29-30-31													
32-33-34													
TOTAL													0

MONTH : DECEMBER

TIME : 9 UTC

MODEL : D

TABLE: Mean number of occurrences of concurrent wind direction (in 30 degree sector) and wind speed in specified ranges.

Wind Direction in tens of degree	WIND SPEED (KNOTS)												
	0	1 TO 5	6 TO 10	11 TO 15	16 TO 20	21 TO 25	26 TO 30	31 TO 35	36 TO 40	41 TO 45	46 TO 50	> 50	TOTAL
Calm													
Variable													
35-36-01													
02-03-04													
05-06-07													
08-09-10													
11-12-13													
14-15-16													
17-18-19													
20-21-22													
23-24-25													
26-27-28													
29-30-31													
32-33-34													
TOTAL													0

MONTH : DECEMBER

TIME : 12 UTC

MODEL : D

TABLE: Mean number of occurrences of concurrent wind direction (in 30 degree sector) and wind speed in specified ranges.

Wind Direction in tens of degree	WIND SPEED (KNOTS)												
	0	1 TO 5	6 TO 10	11 TO 15	16 TO 20	21 TO 25	26 TO 30	31 TO 35	36 TO 40	41 TO 45	46 TO 50	> 50	TOTAL
Calm													
Variable													
35-36-01													
02-03-04													
05-06-07													
08-09-10													
11-12-13													
14-15-16													
17-18-19													
20-21-22													
23-24-25													
26-27-28													
29-30-31													
32-33-34													
TOTAL													0

MONTH : DECEMBER

TIME : 15 UTC

MODEL : D

TABLE: Mean number of occurrences of concurrent wind direction (in 30 degree sector) and wind speed in specified ranges.

Wind Direction in tens of degree	WIND SPEED (KNOTS)												
	0	1 TO 5	6 TO 10	11 TO 15	16 TO 20	21 TO 25	26 TO 30	31 TO 35	36 TO 40	41 TO 45	46 TO 50	> 50	TOTAL
Calm													
Variable													
35-36-01													
02-03-04													
05-06-07													
08-09-10													
11-12-13													
14-15-16													
17-18-19													
20-21-22													
23-24-25													
26-27-28													
29-30-31													
32-33-34													
TOTAL													0

MONTH : DECEMBER

TIME : 18 UTC

MODEL : D

TABLE: Mean number of occurrences of concurrent wind direction (in 30 degree sector) and wind speed in specified ranges.

Wind Direction in tens of degree	WIND SPEED (KNOTS)												
	0	1 TO 5	6 TO 10	11 TO 15	16 TO 20	21 TO 25	26 TO 30	31 TO 35	36 TO 40	41 TO 45	46 TO 50	> 50	TOTAL
Calm													
Variable													
35-36-01													
02-03-04													
05-06-07													
08-09-10													
11-12-13													
14-15-16													
17-18-19													
20-21-22													
23-24-25													
26-27-28													
29-30-31													
32-33-34													
TOTAL													0

MONTH : DECEMBER

TIME : 21 UTC

MODEL : D

TABLE: Mean number of occurrences of concurrent wind direction (in 30 degree sector) and wind speed in specified ranges.

Wind Direction in tens of degree	WIND SPEED (KNOTS)												
	0	1 TO 5	6 TO 10	11 TO 15	16 TO 20	21 TO 25	26 TO 30	31 TO 35	36 TO 40	41 TO 45	46 TO 50	> 50	TOTAL
Calm													
Variable													
35-36-01													
02-03-04													
05-06-07													
08-09-10													
11-12-13													
14-15-16													
17-18-19													
20-21-22													
23-24-25													
26-27-28													
29-30-31													
32-33-34													
TOTAL													0

MONTH : JANUARY

MODEL : E

TABLE: Mean number of occurrence of screen temperature (in ranges of 5 degrees) at specified time.

Time UTC	TEMPERATURE (°C)												Total
	-10 to -5	-5 to 0	0 to 5	5 to 10	10 to 15	15 to 20	20 to 25	25 to 30	30 to 35	35 to 40	40 to 45	45 to 50	
0													
1													
2													
3													
4													
5													
6													
7													
8													
9													
10													
11													
12													
13													
14													
15													
16													
17													
18													
19													
20													
21													
22													
23													
Total													

MONTH : FEBRUARY

MODEL : E

TABLE: Mean number of occurrence of screen temperature (in ranges of 5 degrees) at specified time.

Time UTC	TEMPERATURE (°C)												Total
	-10 to - 5	-5 to 0	0 to 5	5 to 10	10 to 15	15 to 20	20 to 25	25 to 30	30 to 35	35 to 40	40 to 45	45 to 50	
0													
1			1.0	15.0	9.0	2.0							27.0
2			1.0	14.0	11.0	1.0							27.0
3				11.0	14.0	2.0							27.0
4					12.0	16.0							28.0
5					3.0	14.0	10.0						27.0
6					1.0	9.0	17.0	1.0					28.0
7						5.0	20.0	3.0					28.0
8						5.0	13.0	10.0					28.0
9						5.0	12.0	11.0					28.0
10						4.0	15.0	9.0					28.0
11						8.0	14.0	6.0					28.0
12					1.0	12.0	14.0	1.0					28.0
13													
14													
15													
16													
17													
18													
19													
20													
21													
22													
23													
Total			2.0	40.0	51.0	83.0	115.0	41.0					332.0

MONTH : MARCH

MODEL : E

TABLE: Mean number of occurrence of screen temperature (in ranges of 5 degrees) at specified time.

Time UTC	TEMPERATURE (°C)												Total
	-10 to - 5	-5 to 0	0 to 5	5 to 10	10 to 15	15 to 20	20 to 25	25 to 30	30 to 35	35 to 40	40 to 45	45 to 50	
0													
1				2.0	28.0	1.0							31.0
2					29.0	1.0							30.0
3					17.0	14.0							31.0
4					2.0	20.0	8.0						30.0
5					2.0	8.0	19.0	2.0					31.0
6					1.0	6.0	14.0	9.0					30.0
7					1.0	6.0	11.0	13.0					31.0
8					2.0	3.0	10.0	16.0					31.0
9					3.0	3.0	8.0	17.0					31.0
10					2.0	3.0	10.0	16.0					31.0
11					1.0	5.0	14.0	10.0					30.0
12						7.0	20.0	4.0					31.0
13													
14													
15													
16													
17													
18													
19													
20													
21													
22													
23													
Total				2.0	88.0	77.0	114.0	87.0					368.0

MONTH : APRIL

MODEL : E

TABLE: Mean number of occurrence of screen temperature (in ranges of 5 degrees) at specified time.

Time UTC	TEMPERATURE (°C)												Total
	-10 to - 5	-5 to 0	0 to 5	5 to 10	10 to 15	15 to 20	20 to 25	25 to 30	30 to 35	35 to 40	40 to 45	45 to 50	
0													
1					16.0	14.0							30.0
2					10.0	18.0	2.0						30.0
3					4.0	14.0	11.0						29.0
4					1.0	7.0	11.0	11.0					30.0
5						3.0	10.0	13.0	3.0				29.0
6						2.0	6.0	18.0	4.0				30.0
7						2.0	5.0	15.0	7.0				29.0
8						1.0	5.0	16.0	8.0				30.0
9						2.0	3.0	15.0	9.0	1.0			30.0
10						2.0	3.0	14.0	11.0				30.0
11						3.0	4.0	17.0	6.0				30.0
12						4.0	6.0	16.0	4.0				30.0
13													
14													
15							1.0						1.0
16													
17													
18													
19													
20													
21													
22													
23													
Total					31.0	72.0	67.0	135.0	52.0	1.0			358.0

MONTH : MAY

MODEL : E

TABLE: Mean number of occurrence of screen temperature (in ranges of 5 degrees) at specified time.

Time UTC	TEMPERATURE (°C)												Total
	-10 to - 5	-5 to 0	0 to 5	5 to 10	10 to 15	15 to 20	20 to 25	25 to 30	30 to 35	35 to 40	40 to 45	45 to 50	
0													
1					2.0	21.0	8.0						31.0
2						12.0	13.0	2.0					27.0
3						5.0	18.0	8.0					31.0
4						4.0	11.0	13.0	3.0				31.0
5						4.0	6.0	12.0	8.0	1.0			31.0
6						2.0	4.0	14.0	9.0	1.0			30.0
7						2.0	4.0	11.0	11.0	3.0			31.0
8						3.0	3.0	9.0	13.0	3.0			31.0
9						2.0	3.0	8.0	15.0	3.0			31.0
10						2.0	2.0	8.0	16.0	3.0			31.0
11						2.0	4.0	8.0	15.0	2.0			31.0
12						2.0	6.0	10.0	11.0	2.0			31.0
13													
14													
15													
16													
17						1.0							1.0
18						1.0							1.0
19													
20													
21													
22													
23													
Total					2.0	63.0	82.0	103.0	101.0	18.0			369.0

MONTH : JUNE

MODEL : E

TABLE: Mean number of occurrence of screen temperature (in ranges of 5 degrees) at specified time.

Time UTC	TEMPERATURE (°C)												Total
	-10 to - 5	-5 to 0	0 to 5	5 to 10	10 to 15	15 to 20	20 to 25	25 to 30	30 to 35	35 to 40	40 to 45	45 to 50	
0													
1						7.0	19.0	3.0					29.0
2						3.0	18.0	8.0					29.0
3						1.0	11.0	18.0					30.0
4						1.0	7.0	14.0	8.0				30.0
5						1.0	5.0	9.0	15.0				30.0
6							2.0	11.0	17.0				30.0
7							2.0	8.0	20.0				30.0
8							2.0	7.0	20.0	1.0			30.0
9							1.0	8.0	16.0	5.0			30.0
10							3.0	9.0	13.0	5.0			30.0
11							2.0	12.0	16.0				30.0
12							2.0	12.0	16.0				30.0
13													
14													
15													
16													
17													
18													
19													
20													
21													
22													
23													
Total						13.0	74.0	119.0	141.0	11.0			358.0

MONTH : JULY

MODEL : E

TABLE: Mean number of occurrence of screen temperature (in ranges of 5 degrees) at specified time.

Time UTC	TEMPERATURE (°C)												Total
	-10 to - 5	-5 to 0	0 to 5	5 to 10	10 to 15	15 to 20	20 to 25	25 to 30	30 to 35	35 to 40	40 to 45	45 to 50	
0													
1							28.0	1.0					29.0
2							24.0	7.0					31.0
3							11.0	20.0					31.0
4							5.0	24.0	2.0				31.0
5							5.0	21.0	5.0				31.0
6							5.0	16.0	10.0				31.0
7							5.0	12.0	14.0				31.0
8							5.0	9.0	17.0				31.0
9							4.0	7.0	20.0				31.0
10							4.0	13.0	14.0				31.0
11							5.0	14.0	11.0				30.0
12							6.0	18.0	7.0				31.0
13													
14													
15													
16													
17													
18													
19													
20													
21													
22													
23													
Total							107.0	162.0	100.0				369.0

MONTH : AUGUST

MODEL : E

TABLE: Mean number of occurrence of screen temperature (in ranges of 5 degrees) at specified time.

Time UTC	TEMPERATURE (°C)												Total
	-10 to - 5	-5 to 0	0 to 5	5 to 10	10 to 15	15 to 20	20 to 25	25 to 30	30 to 35	35 to 40	40 to 45	45 to 50	
0													
1						1.0	27.0	3.0					31.0
2						1.0	23.0	7.0					31.0
3							12.0	19.0					31.0
4							6.0	25.0					31.0
5							6.0	21.0	4.0				31.0
6							4.0	19.0	8.0				31.0
7							3.0	13.0	15.0				31.0
8							1.0	10.0	20.0				31.0
9							1.0	10.0	18.0				29.0
10							1.0	12.0	16.0				29.0
11							2.0	15.0	12.0				29.0
12							2.0	21.0	6.0				29.0
13													
14													
15													
16													
17													
18													
19													
20													
21													
22													
23													
Total						2.0	88.0	175.0	99.0				364.0

MONTH : SEPTEMBER

MODEL : E

TABLE: Mean number of occurrence of screen temperature (in ranges of 5 degrees) at specified time.

Time UTC	TEMPERATURE (°C)												Total
	-10 to - 5	-5 to 0	0 to 5	5 to 10	10 to 15	15 to 20	20 to 25	25 to 30	30 to 35	35 to 40	40 to 45	45 to 50	
0													
1						7.0	18.0	4.0					29.0
2						8.0	17.0	3.0					28.0
3						2.0	19.0	9.0					30.0
4							9.0	21.0					30.0
5							3.0	20.0	7.0				30.0
6							3.0	13.0	14.0				30.0
7							2.0	11.0	17.0				30.0
8							4.0	4.0	18.0				26.0
9							4.0	4.0	21.0				29.0
10							4.0	4.0	21.0				29.0
11							5.0	16.0	8.0				29.0
12							4.0	22.0	3.0				29.0
13								1.0					1.0
14													
15													
16													
17													
18													
19													
20													
21													
22													
23													
Total						17.0	92.0	132.0	109.0				350.0

MONTH : OCTOBER

MODEL : E

TABLE: Mean number of occurrence of screen temperature (in ranges of 5 degrees) at specified time.

Time UTC	TEMPERATURE (°C)												Total
	-10 to - 5	-5 to 0	0 to 5	5 to 10	10 to 15	15 to 20	20 to 25	25 to 30	30 to 35	35 to 40	40 to 45	45 to 50	
0													
1					16.0	14.0	1.0						31.0
2					14.0	15.0	1.0						30.0
3					1.0	19.0	10.0						30.0
4						2.0	20.0	8.0					30.0
5						1.0	11.0	18.0					30.0
6						2.0	2.0	26.0	1.0				31.0
7						2.0	1.0	20.0	8.0				31.0
8						2.0	1.0	19.0	9.0				31.0
9						1.0	2.0	20.0	8.0				31.0
10						1.0	3.0	21.0	6.0				31.0
11						1.0	8.0	22.0					31.0
12						1.0	17.0	13.0					31.0
13													
14													
15													
16													
17													
18													
19													
20													
21													
22													
23													
Total					31.0	61.0	77.0	167.0	32.0				368.0

MONTH : NOVEMBER

MODEL : E

TABLE: Mean number of occurrence of screen temperature (in ranges of 5 degrees) at specified time.

Time UTC	TEMPERATURE (°C)												Total
	-10 to - 5	-5 to 0	0 to 5	5 to 10	10 to 15	15 to 20	20 to 25	25 to 30	30 to 35	35 to 40	40 to 45	45 to 50	
0													
1				7.0	23.0								30.0
2				7.0	23.0								30.0
3					21.0	9.0							30.0
4					2.0	20.0	7.0						29.0
5					1.0	8.0	19.0	1.0					29.0
6					1.0	3.0	16.0	10.0					30.0
7					2.0	1.0	16.0	11.0					30.0
8					2.0		14.0	13.0					29.0
9					2.0		14.0	14.0					30.0
10					2.0	1.0	20.0	7.0					30.0
11					2.0	2.0	23.0	3.0					30.0
12					2.0	15.0	12.0						29.0
13													
14													
15													
16													
17													
18													
19													
20													
21													
22													
23													
Total				14.0	83.0	59.0	141.0	59.0					356.0

MONTH : DECEMBER

MODEL : E

TABLE: Mean number of occurrence of screen temperature (in ranges of 5 degrees) at specified time.

Time UTC	TEMPERATURE (°C)												Total
	-10 to -5	-5 to 0	0 to 5	5 to 10	10 to 15	15 to 20	20 to 25	25 to 30	30 to 35	35 to 40	40 to 45	45 to 50	
0													
1													
2													
3													
4													
5													
6													
7													
8													
9													
10													
11													
12													
13													
14													
15													
16													
17													
18													
19													
20													
21													
22													
23													
Total													

Month : January

TABLE : VI

TABLE: Mean daily atmospheric pressure (hPa) at mean sea level (msl) at standard times of synoptic observation (UTC).

<i>DATE</i>	<i>0000</i>	<i>0300</i>	<i>0600</i>	<i>1200</i>	<i>1800</i>
1					
2					
3					
4					
5					
6					
7					
8					
9					
10					
11					
12					
13					
14					
15					
16					
17					
18					
19					
20					
21					
22					
23					
24					
25					
26					
27					
28					
29					
30					
31					
MEAN					

Month : February

TABLE : VI

TABLE: Mean daily atmospheric pressure (hPa) at mean sea level (msl) at standard times of synoptic observation (UTC).

<i>DATE</i>	<i>0000</i>	<i>0300</i>	<i>0600</i>	<i>1200</i>	<i>1800</i>
1		0930.6	0932.5	0929.2	
2		0929.9	0930.8	0928.9	
3		0929.7	0930.7	0928.3	
4		0927.8	0928.7	0926.2	
5		0926.0	0927.1	0924.8	
6		0928.5	0930.5	0925.6	
7		0926.1	0926.9	0924.3	
8		0928.0	0929.2	0926.6	
9		0926.5	0927.3	0925.9	
10		0927.0	0928.2	0924.9	
11		0927.7	0929.3	0927.8	
12		0931.5	0933.0	0931.7	
13		0929.2	0930.3	0927.3	
14		0929.6	0930.9	0927.9	
15		0927.4	0928.7	0926.5	
16		0929.8	0930.5	0928.8	
17		0931.3	0933.0	0929.9	
18		0929.9	0930.7	0927.9	
19		0927.4	0930.7	0927.3	
20		0927.2	0927.9	0925.0	
21		0928.0	0928.2	0925.8	
22		0927.9	0929.3	0927.2	
23		0929.3	0928.1	0925.9	
24		0930.9	0930.3	0928.4	
25		0933.1	0931.8	0929.3	
26		0933.1	0933.9	0931.2	
27		0933.6	0933.9	0931.2	
28			0933.5	0930.9	
29					
MEAN		0929.1	0930.2	0927.7	

Month : March

TABLE : VI

TABLE: Mean daily atmospheric pressure (hPa) at mean sea level (msl) at standard times of synoptic observation (UTC).

DATE	0000	0300	0600	1200	1800
1		0936.0	0936.9	0933.7	
2		0935.0	0935.4	0932.8	
3		0934.8	0936.0	0932.4	
4		0935.3	0935.9	0932.1	
5		0934.3	0934.6	0930.6	
6		0931.2	0931.9	0928.4	
7		0930.9	0931.7	0928.8	
8		0932.4	0932.8	0928.9	
9		0932.9	0933.5	0929.8	
10		0931.0	0931.4	0928.5	
11		0931.0	0931.6	0928.8	
12		0931.4	0931.6	0928.3	
13		0930.1	0930.4	0926.4	
14		0927.6	0927.2	0923.4	
15		0926.2	0926.9	0925.4	
16		0927.2	0927.9	0924.8	
17		0931.0	0931.8	0926.9	
18		0928.8	0929.7	0926.0	
19		0925.8	0926.7	0922.4	
20		0923.8	0925.2	0921.3	
21		0924.4	0925.5	0922.3	
22		0926.7	0926.9	0922.9	
23		0925.1	0926.1	0923.5	
24		0924.4	0927.2	0922.5	
25		0929.5	0929.8	0926.3	
26		0928.2	0926.7	0925.1	
27		0925.8	0926.4	0924.1	
28		0925.5	0927.5	0924.1	
29		0926.8	0926.7	0925.3	
30		0927.5	0925.5	0921.7	
31		0924.4		0923.3	
MEAN		0929.2	0929.9	0926.5	

Month : April

TABLE : VI

TABLE: Mean daily atmospheric pressure (hPa) at mean sea level (msl) at standard times of synoptic observation (UTC).

<i>DATE</i>	<i>0000</i>	<i>0300</i>	<i>0600</i>	<i>1200</i>	<i>1800</i>
1		0925.9	0926.7	0923.4	
2		0924.3	0925.5	0922.6	
3		0922.9	0924.6	0922.2	
4		0925.7	0927.0	0924.7	
5		0926.6	0926.9	0924.1	
6		0928.7	0929.8	0927.9	
7		0930.3	0930.9	0928.4	
8		0930.3	0930.8	0928.6	
9		0928.9	0932.0	0928.0	
10		0928.8	0929.7	0927.1	
11		0928.8	0929.5	0926.4	
12		0926.7	0928.7	0925.8	
13		0926.7	0927.1	0924.3	
14		0926.0	0926.8	0923.4	
15		0926.3	0926.9	0923.6	
16		0924.8	0926.5	0922.9	
17		0929.0	0924.8	0922.8	
18		0924.5	0927.2	0924.8	
19		0922.1	0924.5	0920.9	
20		0921.9	0922.2	0920.6	
21		0923.5	0923.0	0920.7	
22		0924.3	0924.1	0921.7	
23		0926.5	0924.5	0923.4	
24		0928.9	0927.4	0925.3	
25		0926.6	0929.8	0926.8	
26		0926.0	0926.9	0924.1	
27		0927.4	0928.6	0924.2	
28		0925.0	0927.3	0923.4	
29		0924.2	0924.8	0921.9	
30		0927.5	0924.1	0919.8	
MEAN		0926.3	0927.0	0924.1	

Month : May

TABLE : VI

TABLE: Mean daily atmospheric pressure (hPa) at mean sea level (msl) at standard times of synoptic observation (UTC).

<i>DATE</i>	<i>0000</i>	<i>0300</i>	<i>0600</i>	<i>1200</i>	<i>1800</i>
1		0924.6	0925.4	0922.6	0926.5
2		0925.8	0927.0	0925.0	
3		0928.4	0928.1	0924.2	
4		0927.5	0927.7	0923.6	
5		0925.7	0925.8	0921.8	
6		0923.4	0924.0	0921.3	
7		0925.7	0924.6	0920.7	
8		0921.5	0922.7	0921.6	
9		0925.6	0926.1	0924.4	
10		0923.5	0924.0	0921.9	
11		0924.6	0925.4	0923.1	
12		0923.8	0925.2	0922.3	
13		0925.1	0922.5	0921.5	
14		0923.2	0921.5	0918.4	
15		0920.5	0922.9	0918.8	
16		0922.8	0923.3	0920.4	
17		0922.5	0928.6	0921.6	
18		0928.1	0923.8	0925.2	
19		0923.8	0921.6	0921.6	
20		0921.4	0923.2	0920.1	
21		0922.7	0923.3	0921.5	
22		0922.9	0924.2	0921.0	
23		0923.4	0923.2	0921.1	
24		0922.1	0923.3	0920.1	
25		0922.9	0923.9	0921.4	
26		0924.7	0924.0	0921.4	
27		0922.0	0924.1	0922.3	
28		0923.4	0926.2	0921.1	
29		0925.5	0927.0	0923.7	
30		0927.6	0926.2	0923.7	
31		0923.9	0927.0	0923.7	
MEAN		0924.1	0924.6	0922.0	0926.5

Month : June

TABLE : VI

TABLE: Mean daily atmospheric pressure (hPa) at mean sea level (msl) at standard times of synoptic observation (UTC).

<i>DATE</i>	<i>0000</i>	<i>0300</i>	<i>0600</i>	<i>1200</i>	<i>1800</i>
1		0923.0	0925.2	0923.1	0926.5
2		0923.4	0924.8	0922.2	
3		0923.5	0923.7	0922.9	
4		0923.9	0924.1	0921.4	
5		0921.7	0922.3	0919.6	
6		0922.9	0923.2	0920.4	
7		0922.8	0924.2	0920.1	
8		0921.8	0921.9	0919.2	
9		0920.0	0919.8	0916.3	
10		0918.0	0917.8	0913.7	
11		0918.6	0918.4	0916.0	
12		0916.7	0917.2	0915.6	
13		0918.0	0917.6	0914.6	
14		0919.1	0918.4	0915.5	
15		0918.1	0919.8	0917.9	
16		0918.6	0918.8	0916.7	
17		0918.8	0919.5	0916.6	
18		0919.8	0919.3	0917.9	
19		0919.3	0918.9	0915.4	
20		0918.2	0917.8	0915.5	
21		0919.5	0919.1	0915.9	
22		0919.3	0919.6	0916.9	
23		0919.2	0920.4	0916.2	
24		0920.1	0919.1	0915.9	
25		0918.8	0918.7	0918.4	
26		0920.9	0921.8	0917.7	
27		0919.2	0919.8	0917.1	
28		0920.0	0921.1	0918.8	
29		0920.2	0919.4	0916.7	
30		0918.4	0919.0	0914.6	
MEAN		0920.1	0920.4	0917.6	

Month : July

TABLE : VI

TABLE: Mean daily atmospheric pressure (hPa) at mean sea level (msl) at standard times of synoptic observation (UTC).

<i>DATE</i>	<i>0000</i>	<i>0300</i>	<i>0600</i>	<i>1200</i>	<i>1800</i>
1		0918.6	0918.5	0916.2	0926.5
2		0919.6	0919.1	0916.9	
3		0919.7	0919.2	0916.1	
4		0917.3	0917.9	0915.4	
5		0918.4	0919.2	0916.2	
6		0919.5	0920.8	0918.0	
7		0920.6	0921.4	0917.6	
8		0920.3	0922.1	0920.0	
9		0919.2	0921.2	0918.9	
10		0920.3	0920.1	0918.3	
11		0919.2	0919.3	0917.6	
12		0919.1	0919.0	0916.4	
13		0918.7	0920.0	0917.3	
14		0920.5	0921.4	0917.5	
15		0919.3	0919.6	0916.5	
16		0920.1	0920.6	0917.8	
17		0919.1	0919.0	0917.2	
18		0919.1	0919.6	0917.2	
19		0920.1	0920.1	0917.9	
20		0920.3	0919.5	0916.3	
21		0920.4	0921.0	0918.6	
22		0925.2	0925.9	0920.3	
23		0924.5	0924.9	0920.4	
24		0921.7	0921.1	0918.2	
25		0920.7	0921.7	0918.3	
26		0921.9	0921.6	0920.2	
27		0921.8	0921.5	0918.3	
28		0919.2	0919.1	0915.5	
29		0918.0	0918.2	0917.4	
30		0917.8	0917.9	0915.5	
31		0916.8	0917.4	0914.8	
MEAN		0919.9	0920.3	0917.5	

Month : August

TABLE : VI

TABLE: Mean daily atmospheric pressure (hPa) at mean sea level (msl) at standard times of synoptic observation (UTC).

<i>DATE</i>	<i>0000</i>	<i>0300</i>	<i>0600</i>	<i>1200</i>	<i>1800</i>
1		0916.0	0916.1	0914.0	0926.5
2		0916.0	0916.3	0914.8	
3		0916.7	0916.7	0914.6	
4		0918.0	0919.0	0917.5	
5		0921.2	0920.9	0918.3	
6		0917.6	0917.3	0914.6	
7		0915.0	0914.9	0915.5	
8		0915.3	0915.7	0918.6	
9		0919.5	0920.2	0919.6	
10		0921.3	0921.8	0915.8	
11		0921.7	0922.7	0914.7	
12		0919.5	0919.7	0920.5	
13		0915.7	0916.4	0920.3	
14		0921.0	0922.1	0919.4	
15		0922.6	0923.0	0919.2	
16		0922.3	0922.4	0919.5	
17		0921.4	0921.3	0920.4	
18		0921.7	0922.1	0920.7	
19		0922.3	0923.3	0918.6	
20		0923.2	0923.4	0915.7	
21		0921.7	0921.2	0916.7	
22		0918.3	0919.0	0915.3	
23		0916.6	0917.3	0916.3	
24		0917.3	0917.2	0917.5	
25		0917.4	0916.4	0916.8	
26		0918.9	0919.0	0917.6	
27		0918.6	0918.7	0920.0	
28		0919.5	0919.4	0921.6	
29		0921.6	0920.9	0922.4	
30		0923.0	0923.7	0915.5	
31		0923.9	0924.5	0914.8	
MEAN		0919.5	0919.8	0917.8	

Month : September

TABLE : VI

TABLE: Mean daily atmospheric pressure (hPa) at mean sea level (msl) at standard times of synoptic observation (UTC).

<i>DATE</i>	<i>0000</i>	<i>0300</i>	<i>0600</i>	<i>1200</i>	<i>1800</i>
1		0923.9	0924.1	0921.7	0926.5
2		0923.0	0923.2	0920.4	
3		0921.7	0921.8	0920.0	
4		0920.9	0921.0	0920.6	
5		0923.2	0922.9	0921.0	
6		0924.0	0924.0	0919.9	
7		0924.1	0923.6	0919.6	
8		0924.0	0923.2	0919.0	
9		0922.4	0922.7	0917.7	
10		0920.6	0920.2	0918.7	
11		0920.9	0920.8	0918.5	
12		0920.8	0921.3	0918.8	
13		0921.5	0921.7	0920.2	
14		0922.8	0923.0	0921.7	
15		0923.6	0923.7	0921.2	
16		0923.7	0924.5	0920.3	
17		0922.4	0922.7	0920.8	
18		0923.0	0924.0	0923.3	
19		0925.6	0926.2	0921.4	
20		0925.4	0924.9	0921.3	
21		0924.1	0924.0	0921.4	
22		0923.7	0923.9	0922.3	
23		0925.7	0926.5	0921.7	
24		0923.8	0924.2	0923.0	
25		0925.1	0924.9	0923.8	
26		0926.0	0926.3	0923.0	
27		0926.0	0925.7	0922.6	
28		0925.2	0925.5	0922.9	
29		0925.2	0925.4	0922.7	
30		0925.1	0925.5	0915.5	
MEAN		0923.6	0923.7	0921.0	

Month : October

TABLE : VI

TABLE: Mean daily atmospheric pressure (hPa) at mean sea level (msl) at standard times of synoptic observation (UTC).

<i>DATE</i>	<i>0000</i>	<i>0300</i>	<i>0600</i>	<i>1200</i>	<i>1800</i>
1		0924.4	0924.8	0921.9	0926.5
2		0924.8	0925.4	0922.8	
3		0925.6	0925.6	0923.1	
4		0925.8	0925.8	0923.4	
5		0924.9	0925.1	0922.6	
6		0923.6	0923.6	0922.2	
7		0925.0	0924.8	0923.9	
8		0925.3	0925.4	0924.1	
9		0926.1	0927.2	0923.9	
10		0927.9	0929.2	0926.9	
11		0927.2	0928.0	0926.6	
12		0928.4	0929.1	0928.0	
13		0929.8	0930.3	0927.8	
14		0929.4	0930.0	0928.0	
15		0927.4	0927.0	0925.4	
16		0926.3	0930.3	0926.7	
17		0931.6	0933.7	0930.9	
18		0931.0	0932.2	0929.5	
19		0931.6	0931.1	0928.8	
20		0932.0	0931.9	0929.5	
21		0933.1	0932.5	0930.5	
22		0931.3	0932.9	0930.9	
23		0930.0	0930.8	0928.8	
24		0931.2	0930.5	0929.1	
25		0930.8	0931.7	0929.5	
26		0929.5	0931.1	0928.8	
27		0929.9	0930.0	0928.1	
28		0930.5	0930.4	0928.9	
29		0931.3	0931.2	0928.7	
30		0932.6	0931.7	0929.6	
31		0923.6	0932.8	0930.8	
MEAN		0928.6	0929.2	0927.1	

Month : November

TABLE : VI

TABLE: Mean daily atmospheric pressure (hPa) at mean sea level (msl) at standard times of synoptic observation (UTC).

<i>DATE</i>	<i>0000</i>	<i>0300</i>	<i>0600</i>	<i>1200</i>	<i>1800</i>
1		0934.5	0934.0	0929.0	0926.5
2		0931.6	0931.7	0926.8	
3		0928.7	0928.5	0927.5	
4		0928.9	0929.6	0928.6	
5		0930.2	0930.4	0930.2	
6		0932.3	0932.7	0929.0	
7		0931.4	0931.6	0928.6	
8		0930.1	0930.0	0928.4	
9		0930.0	0930.4	0932.3	
10		0930.9	0932.2	0932.4	
11		0932.7	0933.6	0931.0	
12		0933.5	0933.2	0931.1	
13		0933.1	0934.0	0931.0	
14		0933.4	0933.5	0930.7	
15		0933.0	0933.1	0932.6	
16		0933.8	0934.2	0931.5	
17		0934.7	0934.3	0930.1	
18		0931.9	0932.4	0931.5	
19		0933.0	0933.6	0930.9	
20		0933.2	0933.8	0929.5	
21		0932.5	0931.7	0927.9	
22		0928.7	0928.5	0928.0	
23		0929.1	0929.7	0930.1	
24		0931.8	0932.6	0930.7	
25		0931.9	0932.6	0932.6	
26		0934.2	0934.2	0930.7	
27		0931.1	0932.6	0929.1	
28		0931.6	0931.8	0929.8	
29		0930.9	0931.3	0932.6	
30		0932.6	0933.5	0929.6	
MEAN		0931.8	0932.2	0930.1	

Month : December

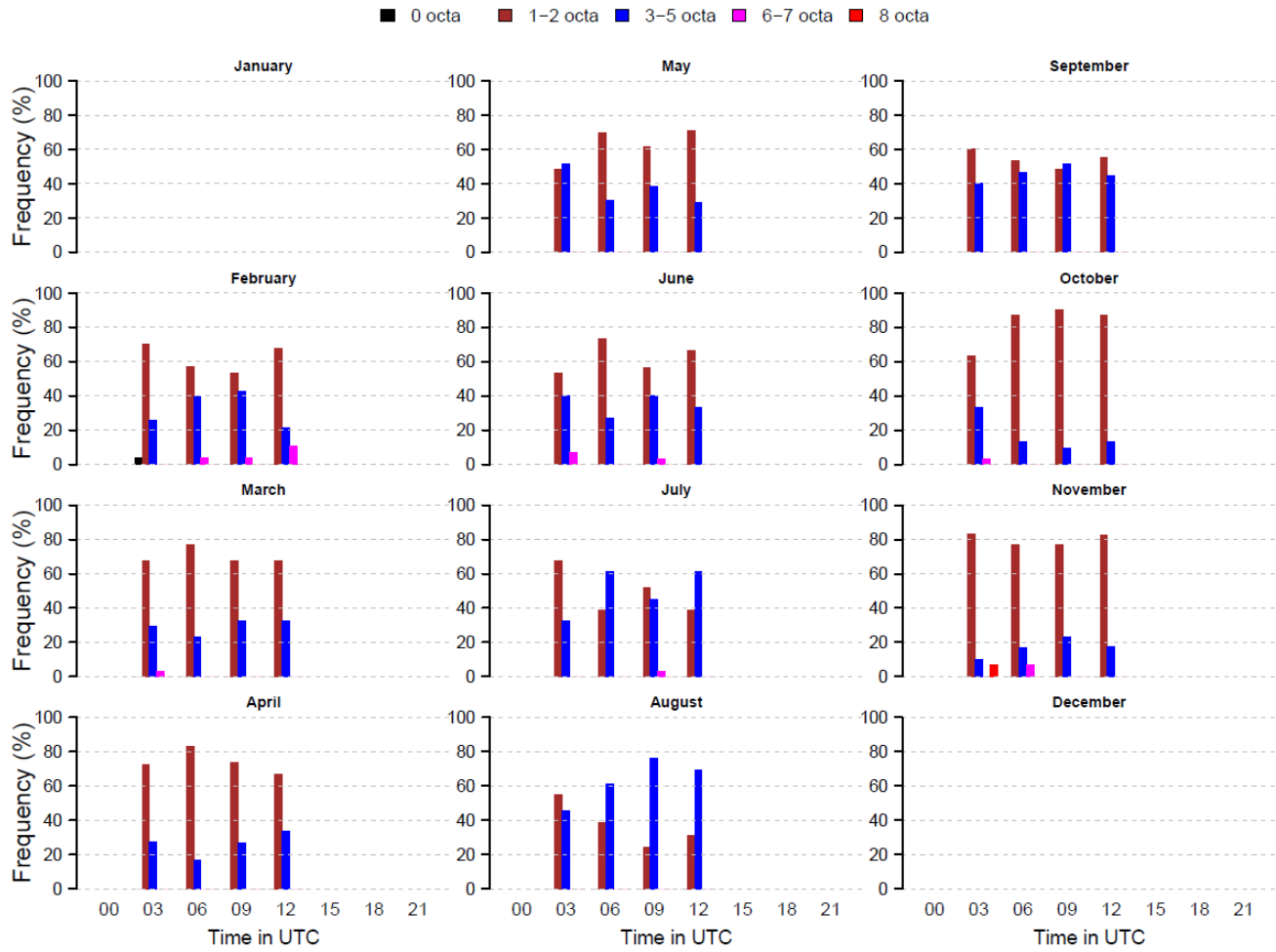
TABLE : VI

TABLE: Mean daily atmospheric pressure (hPa) at mean sea level (msl) at standard times of synoptic observation (UTC).

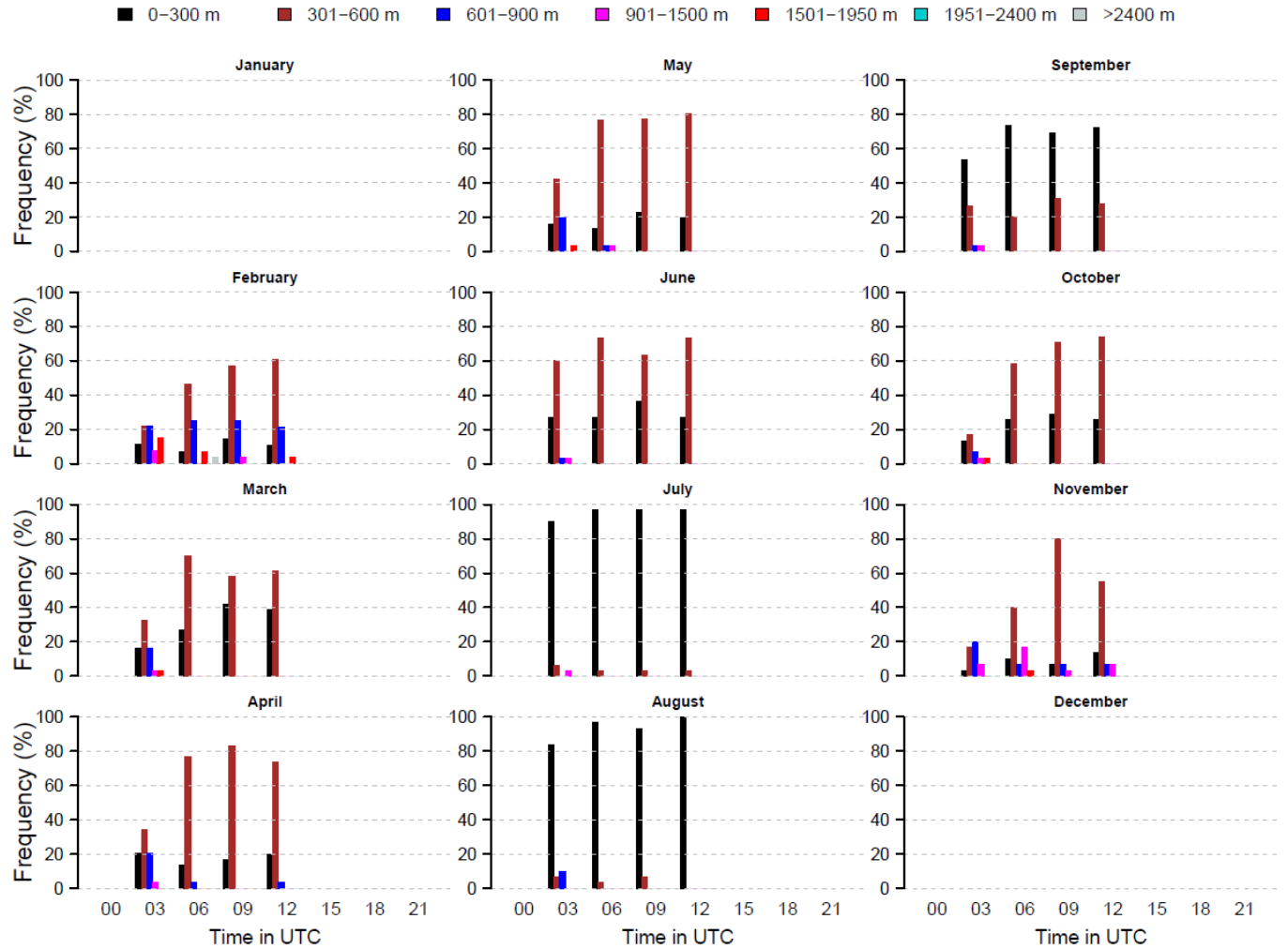
DATE	0000	0300	0600	1200	1800
1		0934.5	0934.0	0929.0	0926.5
2		0931.6	0931.7	0926.8	
3		0928.7	0928.5	0927.5	
4		0928.9	0929.6	0928.6	
5		0930.2	0930.4	0930.2	
6		0932.3	0932.7	0929.0	
7		0931.4	0931.6	0928.6	
8		0930.1	0930.0	0928.4	
9		0930.0	0930.4	0932.3	
10		0930.9	0932.2	0932.4	
11		0932.7	0933.6	0931.0	
12		0933.5	0933.2	0931.1	
13		0933.1	0934.0	0931.0	
14		0933.4	0933.5	0930.7	
15		0933.0	0933.1	0932.6	
16		0933.8	0934.2	0931.5	
17		0934.7	0934.3	0930.1	
18		0931.9	0932.4	0931.5	
19		0933.0	0933.6	0930.9	
20		0933.2	0933.8	0929.5	
21		0932.5	0931.7	0927.9	
22		0928.7	0928.5	0928.0	
23		0929.1	0929.7	0930.1	
24		0931.8	0932.6	0930.7	
25		0931.9	0932.6	0932.6	
26		0934.2	0934.2	0930.7	
27		0931.1	0932.6	0929.1	
28		0931.6	0931.8	0929.8	
29		0930.9	0931.3	0932.6	
30		0932.6	0933.5	0929.6	
31		0931.8	0932.2	0930.1	
MEAN					

DIAGRAMS

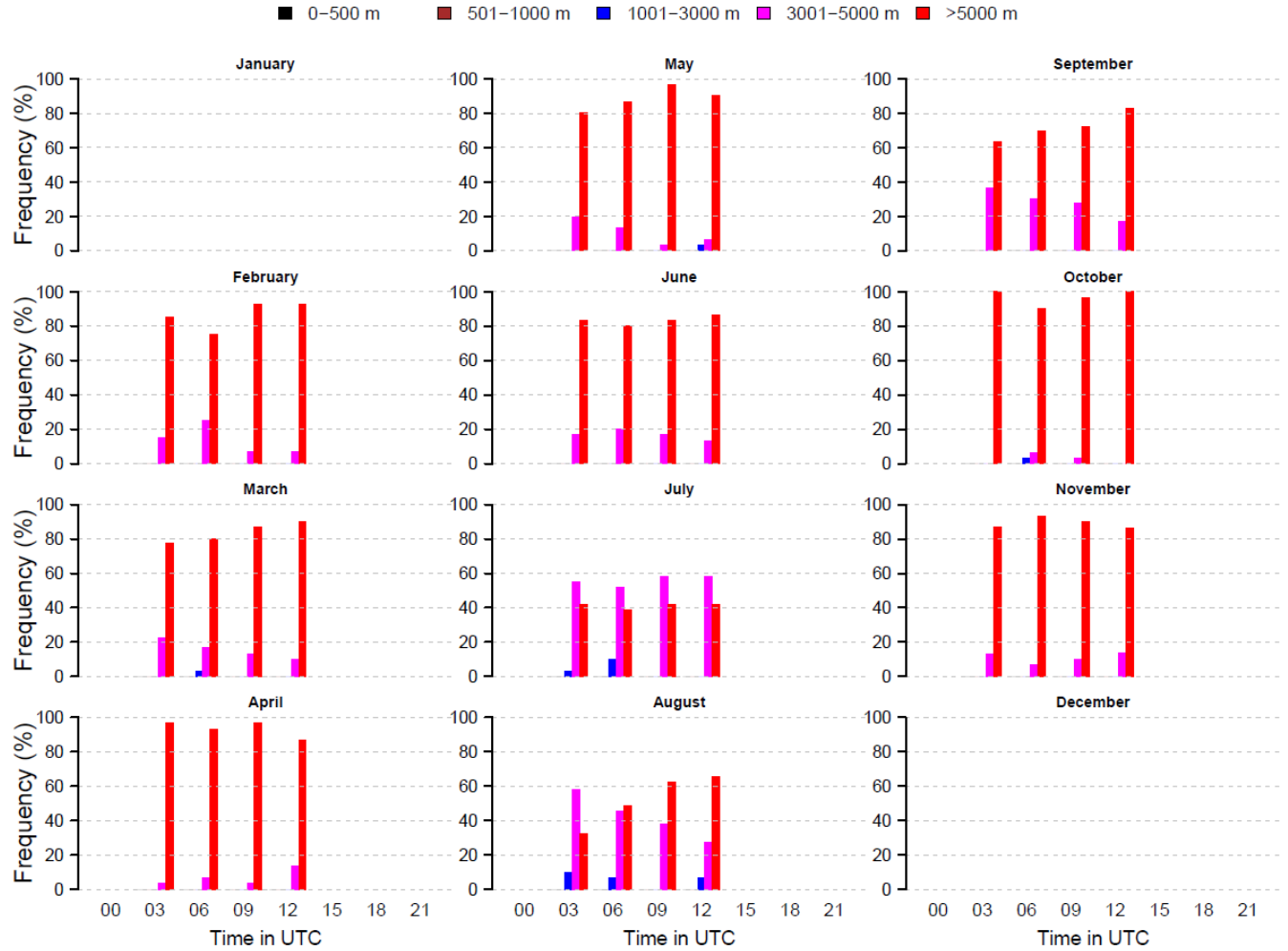
Frequency of Low cloud amount



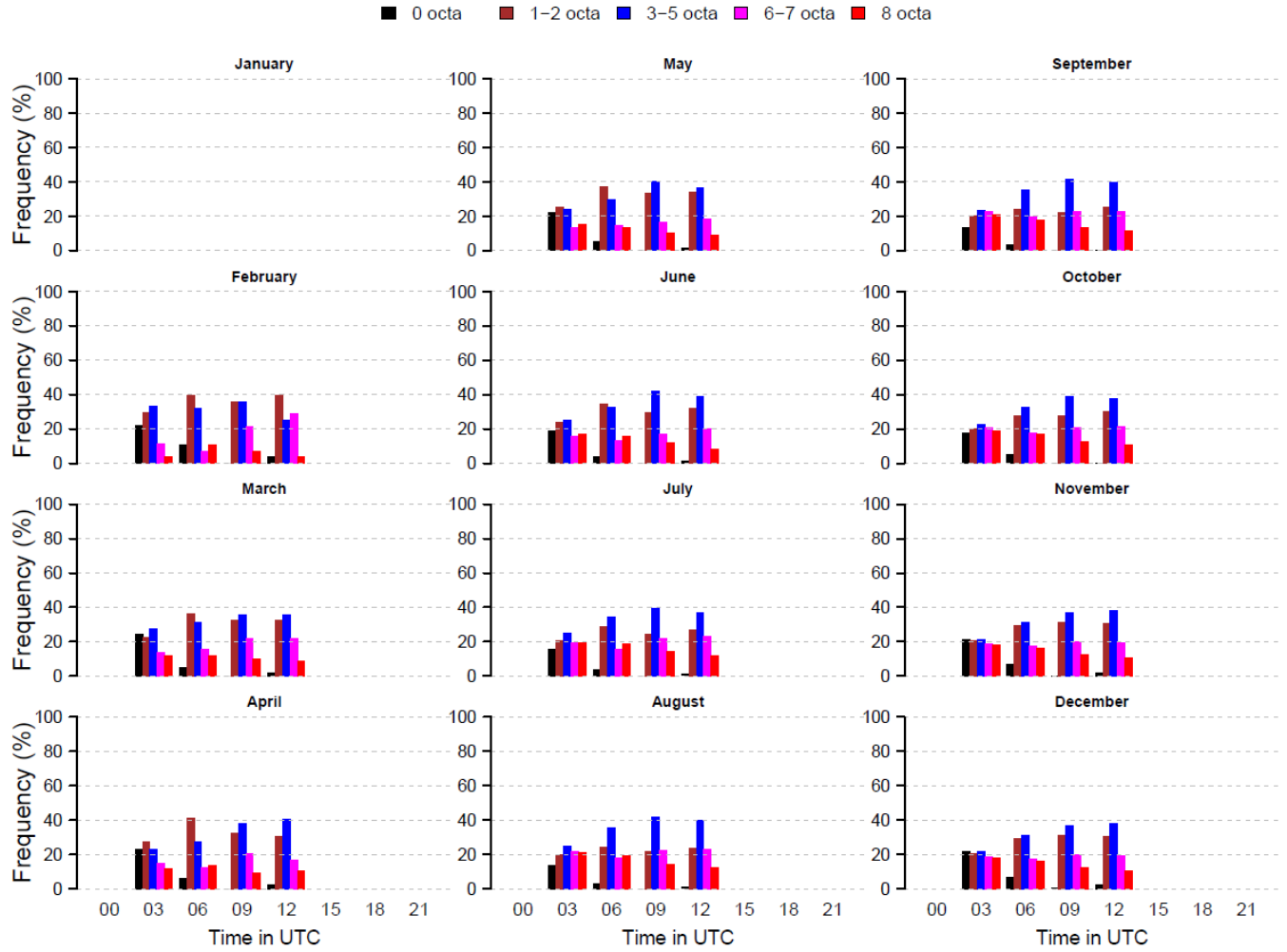
Frequency of Height of Low cloud



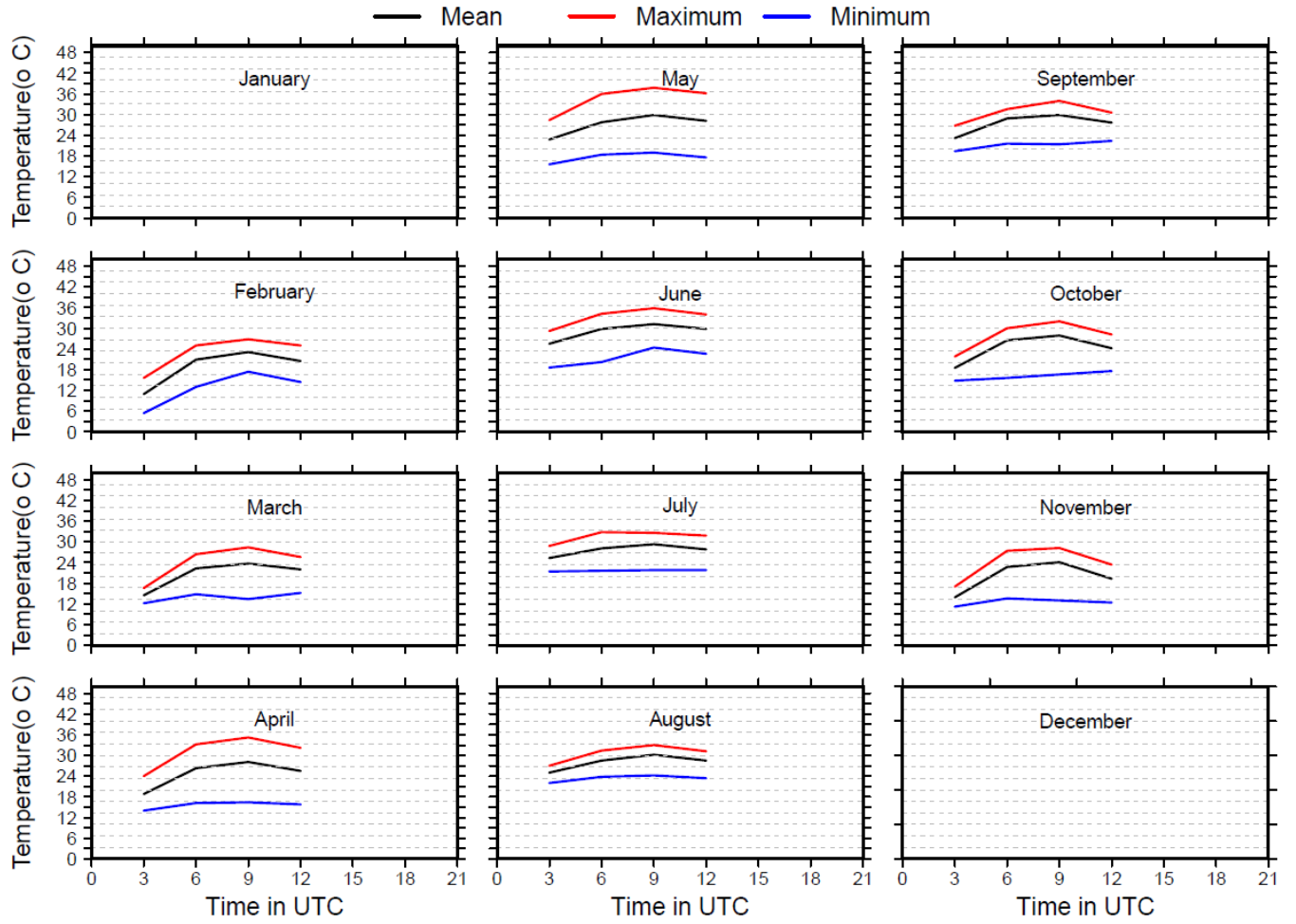
Frequency of Visibility



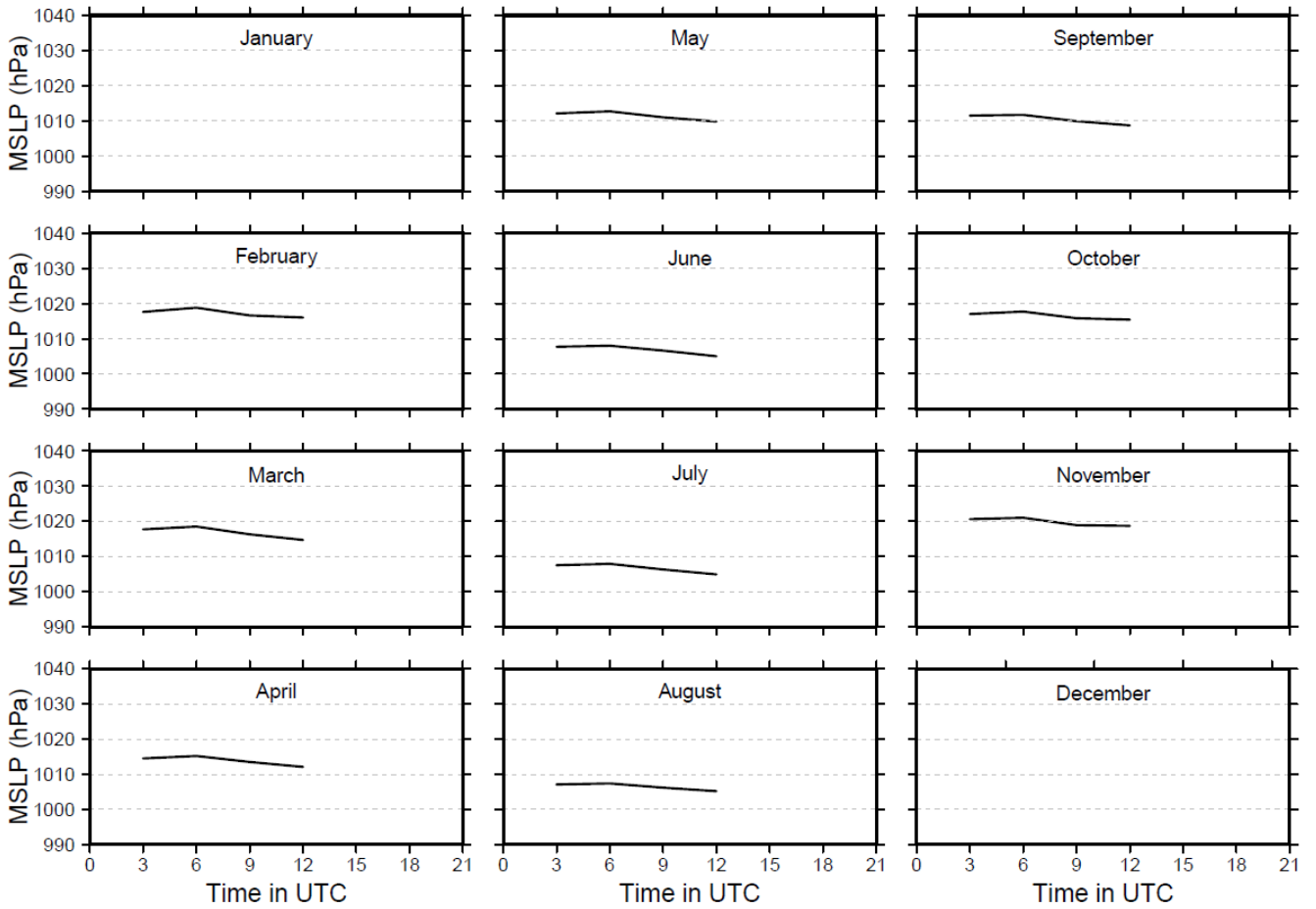
Frequency of Total Cloud Amount



Diurnal variation of Temperature



Diurnal variation of Mean Sea Level Pressure



Diurnal variation of Station Level Pressure

